

Arabian Cement (ARCC)


ARABIAN CEMENT
 العربية للأسمنت


COMPANY PROFILE

Arabian Cement (ARCC) is a public company, listed on Egyptian Exchange (EGX) since May 2014. It was first established in 1997 by a group of Egyptian entrepreneurs, who aspired to establish a leading Egyptian cement company. ACC cement plant is located in Suez Governorate- Egypt. It has an annual cement production capacity of five million tons. Its brand "Al Mosalah" enjoys undisputed prestige and is considered among the best cements produced in Egypt. ACC also provides high quality concrete products through its subsidiary Andalus Ready Mix Concrete.

Stock Details As at: 24-10-2017

No of Shares (mn)	378.74
Free Float	24.49 %
3m avg. Daily Volume	992,841
52 Week High-Low	12.07 / 4.53
Market Price	8.48
PE	26.2 X
P/BV	2.8 X

Ownership

Aridos Jativa Sociedad Limitada	60.00 %
Fayek Mohammed Fayek Al Borini	13.50 %

Others	26.50 %
---------------	----------------

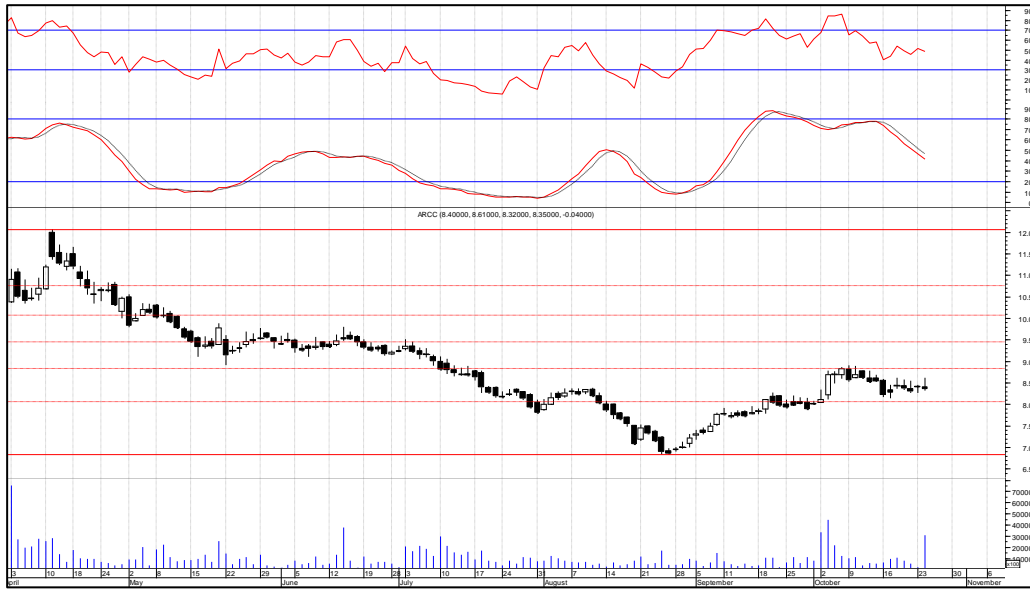
Arabian Cement (ARCC)

- **ARCC's** consolidated profits for H1-17 declined by 50% to EGP 71.72mn vs EGP 143.1mn for H1-16 excluding minority rights.
- **ARCC's** consolidated profits for FY-16 declined by 11.6% to EGP 245.01mn vs EGP 277.22mn for FY-15 excluding minority rights.
- **ARCC** distributed a DPS of EGP 0.53 on its FY-16 profits realizing dividend yield of 6.3%.
- It worthy to note that lockup period for major shareholders had expired and the possibility of selling a stake to strategic investor is existed.

Technical View:

Prices are trading flat within the price range [8.90-8.10], balanced trading will continue as the prices remains within the range. Breaking any of the mentioned levels will set new targets above or below.

Resistance Levels	8.90	9.45	10.10
Support Levels	8.10	7.85	7.35



Disclaimer

The information contained in this report is obtained from sources believed by Blom Egypt Securities Company to be accurate and reliable and this information may be abbreviated or incomplete and does not give Blom Egypt Securities any guarantee and the Company shall not assume any liability or liability arising from Use the information contained in this report to make any investment decisions. This report is intended to be used only by Blom Egypt Securities customers. Blom Egypt Securities Company doesn't permit to distribute copy, quote or otherwise transfer any copy of this report in writing or orally to any third party without prior written consent of the Company. The report does not represent an offer to buy or sell securities.