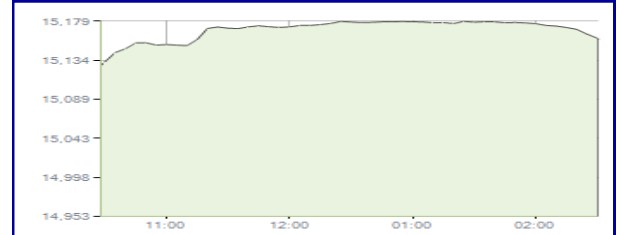


Indices intraday trends

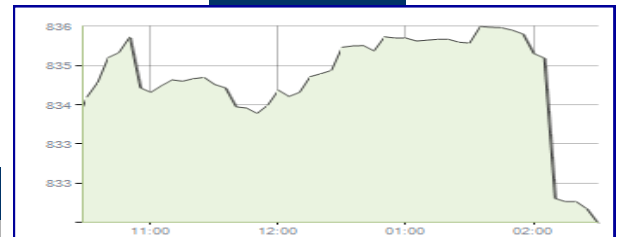
EGX 30



Key Levels

Support 1	14900	Resistance 1	15350
Support 2	14650-14725	Resistance 2	15700

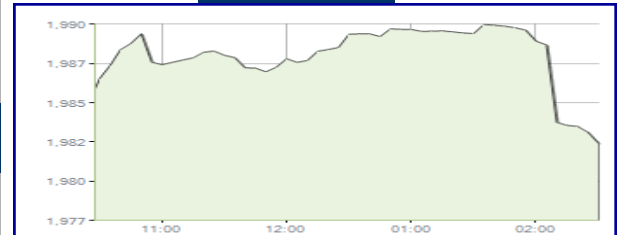
EGX 70



Key Levels

Close		831.57	
Support 1	827	Resistance 1	850
Support 2	805	Resistance 2	875

EGX 100



Key Levels

Close		1982.00	
Support 1	1950	Resistance 1	1980
Support 2	1900	Resistance 2	2030

Market Commentary:

The EGX30 managed to clear the previous reached high 15060 hitting a new historical high. Trading volumes increased indicating the buyers strength confirming the consistency of the move, targets now are at 15350 and 15700 where we may use to trade gradually on.

We recommend to trade only on the stocks that managed to make successful breakouts using the new target levels to trade on. On the other side, held positions are advised to move their protective stops higher as the market rallies to protect profits.

Close	15159.37	Trend	Bullish
Pre. Close	14953.17	Target 1	15350
Change	↑ 206.20 (1.38%)	Target 2	15700
Day's range	14953.17 — 15179.18	Stop-loss	14250
52week's high	15179.18	52week's low	11844.84

Disclaimer

- This publication has been prepared by Blom Egypt Securities for information purposes only.
- It is not intended as an offer to buy or sell or a solicitation of an offer to buy or sell the securities mentioned.
- The information & opinions in this publication were prepared by Blom Egypt Securities research department accepts no liability or legal responsibility for losses & damages incurred arising from the use of this publication or its contents.

Blom Egypt Securities
Samir M. Azmi
 Senior Technical Analyst
samir.azmi@blomsecurities.com

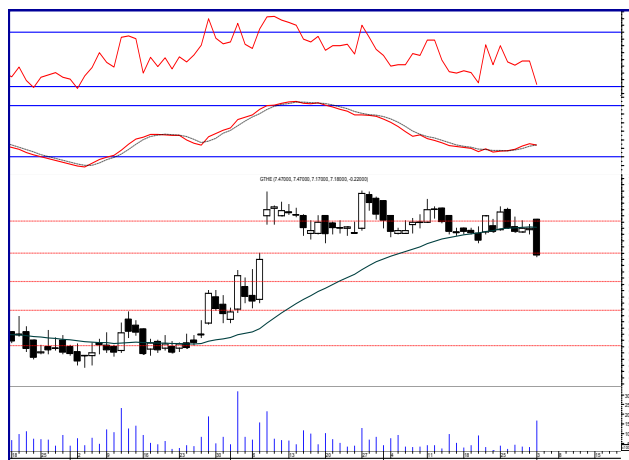


Global telecom (GTHE.CA):

Prices dived sharply below the previous 37 session's low due to aggressive selling pressure reaching the support level 7.20 closing slightly below but still needs confirmation. We recommend to stay on cash till a reentry signal is clear which will probably appear in a successful rebound from the mentioned support.

TRADING CANCELLED

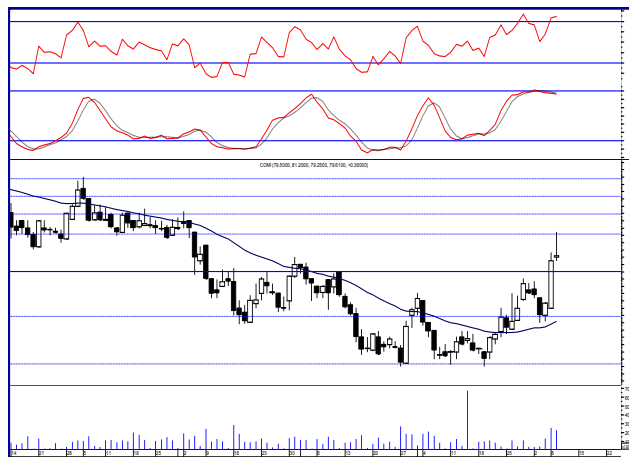
Support levels: 7.20, 6.95
Resistance levels are: 7.50, 7.80



Commercial international bank (COMI.CA):

Prices rose sharply hitting our first target level and soared higher approaching our second target level but selling pressure took place aggressively pulling prices sharply down losing most of the day's gains closing near the low. Traders who took some profits are advised to wait for a pull back to buy on (expected). Held positions are advised to move stops higher below 75.00 bearing in mind that breaking this level will lead to lower levels.

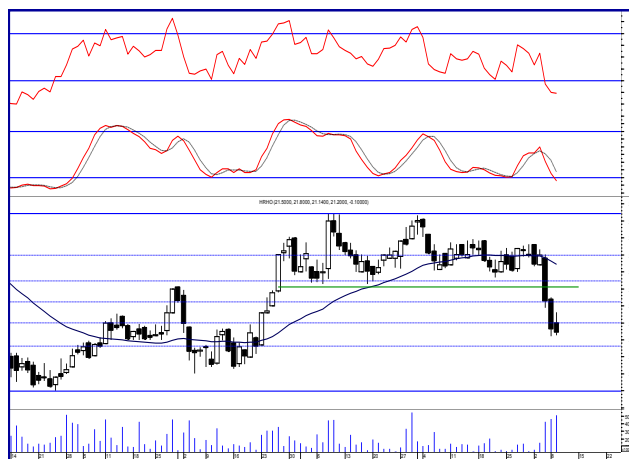
Support levels: 78.50, 77.00
Resistance levels: 80.00, 81.50



Hermes Holding (HRHO.CA):

Prices continued down after failing to continue the early rebound attempt as selling pressure remained in control. Yet, nothing can be done on current levels until the view is clear so that we can react safely. Notice that further decline is still expected to the coming support 20.80 where we believe we may take advantage of a short term trade.

Support levels: 20.80, 20.00
Resistance levels: 21.50, 22.50-22.80



Disclaimer

- This publication has been prepared by Blom Egypt Securities for information purposes only.
- It is not intended as an offer to buy or sell or a solicitation of an offer to buy or sell the securities mentioned.
- The information & opinions in this publication were prepared by Blom Egypt Securities research department accepts no liability or legal responsibility for losses & damages incurred arising from the use of this publication or its contents.

Blom Egypt Securities
Samir M. Azmi
Senior Technical Analyst
samir.azmi@blomsecurities.com



بلوم مصر لتداول الأوراق المالية

BLOM EGYPT SECURITIES



Most active Stocks

Daily Technical Analysis Report

10 Jan, 2018

Stock Name (Reuters' Code)	Close	Trend	T1	T2	Support	Resistance	SL	Triggers	
								Lower	Upper
Building Materials & Construction									
Arabian cement (ARCC.CA)	7.68	Dn.-Corr.	—	—	7.60	8.00	7.20	—	—
El Ezz Steel Rebar's (ESRS.CA)	19.52	Dn.-Corr.	—	—	19.40	20.25	19.00	—	—
Egyptian iron & steel, Co. (IRON.CA)	8.94	Up.-Corr.	—	—	8.20	9.00	7.65	—	—
GB auto (AUTO.CA)	4.69	Dn.-Corr.	—	—	4.25	4.70	3.80	—	—
Orascom construction (ORAS.CA)	144.00	Flat	—	—	—	—	130.00	141.30	150.40
South Valley Cement (SVCE.CA)	5.01	Up.-Corr.	—	—	4.90	5.10	4.90	—	—
Elswedy Cables (SWDY.CA)	143.61	Dn.-Corr.	—	—	141.00	146.00	132.50	—	—
Upper Egypt general contracting (UEGC.CA)	0.75	Dn.-Corr.	—	—	0.74	0.77	0.74	—	—
Chemicals									
Egyptian Financial & Indust. (EFIC.CA)	17.21	Up.-Corr.	—	—	16.90	17.65	15.60	—	—
Egyptian chemical industries-Kima (EGCH.CA)	7.76	Dn.-Corr.	—	—	7.50	8.05	7.50	—	—
Misr Chemicals Industries (MICH.CA)	16.85	Bullish	16.90√	17.55√	16.10	17.55	14.10	—	—
Semad Misr-Egyfert (SMFR.CA)	5.49	Up.-Corr.	—	—	5.35	5.55	5.20	—	—
Communications									
Orascom telecom media & tech holding (OTMT.CA)	0.74	Bearish	—	—	0.69	0.74	—	—	—
Raya Holding (RAYA.CA)	10.88	Up.-Corr.	—	—	10.80	11.50	10.53	—	—
Telecom Egypt (ETEL.CA)	13.37	Dn.-Corr.	—	—	12.90	14.05	12.35	—	—
Financial Services									
Abu Dhabi International Bank (ADIB.CA)	15.99	Bullish	16.80	17.80	15.80	16.80	14.00	—	—
Arabian for investments & development (AIND.CA)	0.80	Up.-Corr.	—	—	0.78	0.83	0.75	—	—
Amer holding group (AMER.CA)	0.33	Up.-Corr.	—	—	0.33	0.37	0.33	—	—
Commercial International Bank (COMI.CA)	79.61	Bullish	80.00√	81.50	78.50	81.50	72.00	—	—
Holding Companies									
Global telecom (GTHE.CA)	N/A	Dn.-Corr.	—	—	7.20	7.50	6.65	—	—
Hermes Holding (HRHO.CA)	21.20	Bearish	—	—	21.10	22.30	—	—	—
Kuwaiti Holding (EKHO.CA)	0.89	Bullish	0.92	1.00	0.84	0.92	0.75	—	—
Citadel capital (CCAP.CA)	1.28	Dn.-Corr.	—	—	1.17	1.30	1.17	—	—
Pioneers holding (PIOH.CA)	8.39	Dn.-Corr.	—	—	8.10	8.70	8.10	—	—
Housing & Real Estate									
Egyptian For Tourism Resorts (EGTS.CA)	1.61	Bullish	1.66	1.74	1.59	1.66	1.45	—	—
Elshams housing. (ELSH.CA)	8.90	Dn.-Corr.	—	—	8.90	9.50	7.80	—	—
Emaar holding (EMFD.CA)	3.66	Dn.-Corr.	—	—	3.50	3.85	3.25	—	—
Heliopolis housing & development (HELI.CA)	35.10	Bullish	35.70√	38.00	33.20	35.70	29.00	—	—
Medinet Nasr for housing & Deve. (MNHD.CA)	10.66	Dn.-Corr.	—	—	10.50	10.85	9.75	—	—
6th. October Deve. Inv. (OCDI.CA)	19.01	Dn.-Corr.	—	—	19.00	20.00	19.00	—	—
Palm hills development Co. (PHDC.CA)	4.05	Dn.-Corr.	—	—	4.00	4.20	3.80	—	—
Talaat Mustafa group holding (TMGH.CA)	9.97	Dn.-Corr.	—	—	9.55	10.00	8.80	—	—
Mining & Gas									
Alexandria Mineral Oils Co. (AMOC.CA)	8.65	Dn.-Corr.	—	—	8.55	9.05	8.00	—	—
Sidi Kerir Petrochemicals (SKPC.CA)	24.90	Dn.-Corr.	—	—	24.60	26.00	23.40	—	—
Textiles & Clothes									
Alexandria Spinning & Weaving (SPIN.CA)	1.97	Bearish	—	—	1.81	1.95	—	—	—
Arab Cotton Ginning (ACGC.CA)	5.91	Dn.-Corr.	—	—	5.70	6.05	5.55	—	—
Oriental Weavers (ORWE.CA)	17.38	Up.-Corr.	—	—	17.00	17.75	16.25	—	—
Other Sectors									
Arabian food industries (DOMT.CA)	9.81	Dn.-Corr.	—	—	9.40	9.90	9.40	—	—
Egyptian Media Production City (MPC.CA)	7.30	Up.-Corr.	—	—	6.80	7.30	5.25	—	—
Egyptian Transport - Egytrans (ETRS.CA)	13.30	Dn.-Corr.	—	—	12.70	13.70	12.00	—	—
United Arab Shipping (UASG.CA)	1.57	Dn.-Corr.	—	—	1.50	1.58	1.36	—	—

Disclaimer

- This publication has been prepared by Blom Egypt Securities for information purposes only.
- It is not intended as an offer to buy or sell or a solicitation of an offer to buy or sell the securities mentioned.
- The information & opinions in this publication were prepared by Blom Egypt Securities research department accepts no liability or legal responsibility for losses & damages incurred arising from the use of this publication or its contents.

Blom Egypt Securities
Samir M. Azmi
 Senior Technical Analyst
samir.azmi@blomsecurities.com



Guidelines for using BLOM daily Technical Analysis Report

<u>Close:</u>	Is recorded as the last trade in the session.
<u>Trend:</u>	
Bullish :	The strategy is to buy the dips.
Bearish :	The strategy is to sell the rallies.
Flat :	The strategy is to trade the range between the triggers.
Up-Corr. :	A move against the major trend when it is down.
Dn.-Corr. :	A move against the major trend when it is up.
<u>Targets :</u>	Take some profit by reducing a portion of the position whenever a price target is been hit.
<u>Support :</u>	A level below market price (previous lows) where buyers showed strength, in a bull market buy near the support and don't sell on the resistance. A break below the Support is considered to be a bearish sign.
<u>Resistance :</u>	A level above market price (previous highs) where sellers showed strength, in a bear market sell near the resistance level and don't buy on the support. A break above the resistance is considered to be a bullish sign.
<u>Stop Loss :</u>	Must exit the current position whenever the closing price is (1% to 2%) below the stop loss and confirmed by volume.
<u>Triggers :</u>	The range between the lower trigger and the upper is used for trading, break of any of them, the move would continue in the same direction.
<u>Yellow rows:</u>	indication that the stock closed below/above support, stop-loss, or resistance but the break is not confirmed yet.

Disclaimer

- This publication has been prepared by Blom Egypt Securities for information purposes only.
- It is not intended as an offer to buy or sell or a solicitation of an offer to buy or sell the securities mentioned.
- The information & opinions in this publication were prepared by Blom Egypt Securities research department accepts no liability or legal responsibility for losses & damages incurred arising from the use of this publication or its contents.

Blom Egypt Securities
Samir M. Azmi
Senior Technical Analyst
samir.azmi@blomsecurities.com