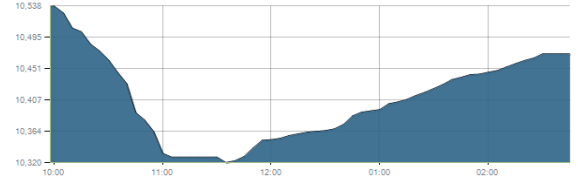




Indices intraday trends

EGX 30

مؤشر EGX 30
اليوم - 23/03/2021

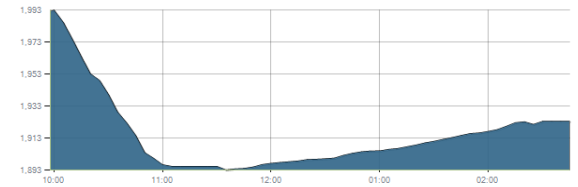


Key Levels

Support 1	10540	Resistance 1	10700
Support 2	10414	Resistance 2	10900

EGX 50 EWI

مؤشر EGX 50 EWI
اليوم - 23/03/2021

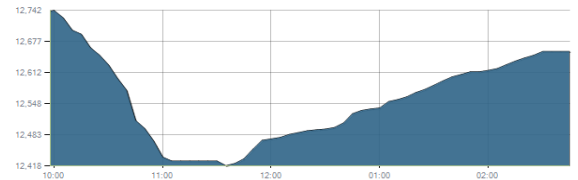


Key Levels

Close		1923.19	
Support 1	1907	Resistance 1	1990
Support 2	1810	Resistance 2	2050

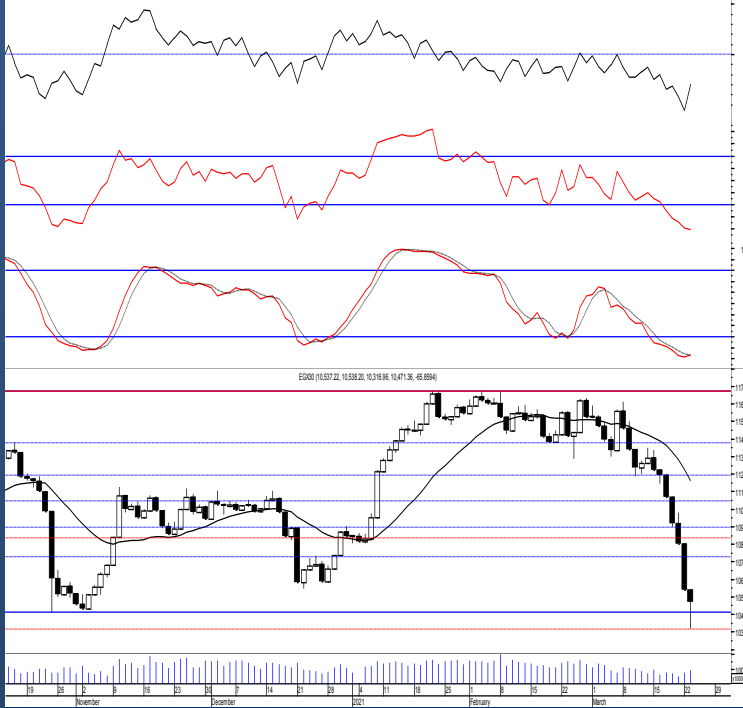
EGX 30 capped

مؤشر EGX 30 Capped
اليوم - 23/03/2021



Key Levels

Close		12656.08	
Support 1	12640	Resistance 1	12870
Support 2	12280	Resistance 2	13170



Market Commentary:

The EGX30 dived lower as selling pressure resumed reaching the major support level 10414 trading slightly below before rebounding attempt takes place pushing the index strongly up gaining almost 60% of the losses.

Strength signals are evident on the intraday and volumes increased indicating that an upward move will likely take place in which we see that the important level 10700 will probably be tested.

Short term trades may be conservatively be opened on current levels keeping close stops placed and respected

Close	10471.36	Trend	Bearish
Pre. Close	10537.22	Target 1	---
Change	↓ 65.86 (0.63%)	Target 2	---
Day's range	10538.20 — 10316.96	Stop-loss	---
52week's high	11675.69	52week's low	8113.82

Disclaimer

- This publication has been prepared by Blom Egypt Securities for information purposes only.
- It is not intended as an offer to buy or sell or a solicitation of an offer to buy or sell the securities mentioned.
- The information & opinions in this publication were prepared by Blom Egypt Securities research department accepts no liability or legal responsibility for losses & damages incurred arising from the use of this publication or its contents.

Blom Egypt Securities
Samir M. Azmi, CFTe, CETA
Senior Technical Analyst
samir.azmi@blomsecurities.com



Commercial international bank (COMI.CA):

Prices fell below the major support level 58.50 ahead of trading where rebounding process took place from closing back above near the day's high. Strength signals on the intraday and increasing volumes while rebounding suggests further climbing which will likely reach 60.00 where we should watch. Current levels may be used for short term trading keeping stops placed and respected below 58.50

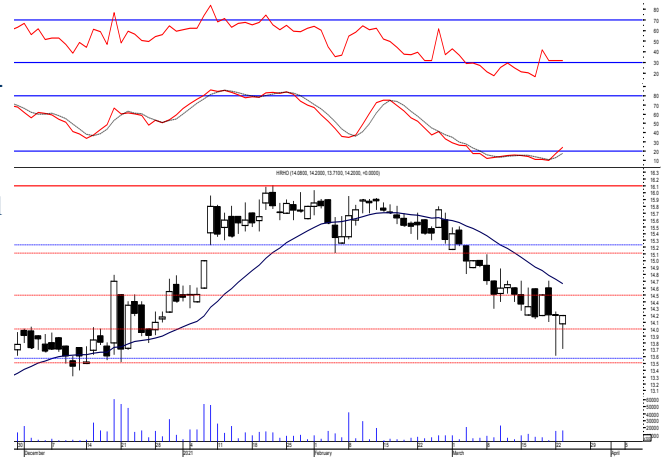
Support levels: 58.50, 56.60
Resistance levels: 60.00, 63.00



Hermes Holding (HRHO.CA):

Prices witnessed a downward move ahead of trading but managed to defend Monday's low closing near the high. Further climbing will likely take place testing back the resistance level 14.60 where we should watch. As we said, bears will remain in control as long as prices are below the support level 14.60 therefore lower lows will easily be witnessed. Close stops should always be placed and respected to protect the downside.

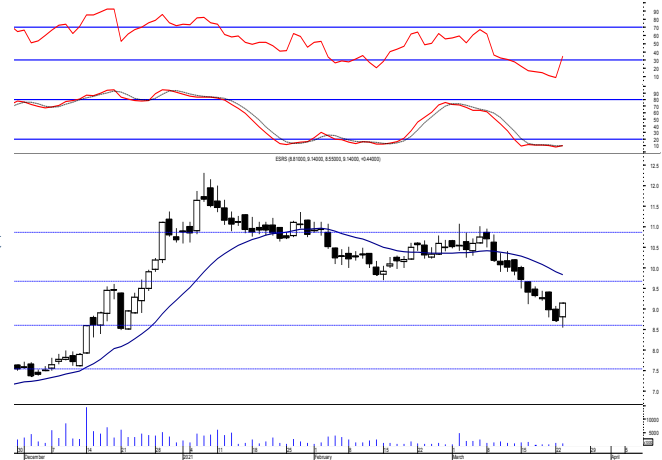
Support levels: 13.50, 12.90
Resistance levels: 14.60, 15.25-15.55



El-Ezz steel rebar's' (ESRS.CA):

Prices witnessed another downward move reaching the support level 8.50 where buyers succeeded to bounce from and closing on the day's high. Short term trades may be opened on current levels as further climbing will probably take place testing the resistance level 9.80 where we may use for quick trading bearing in mind that close stops should be placed and respected

Support levels: 8.50, 7.50
Resistance levels: 9.80, 10.60



Disclaimer

- This publication has been prepared by Blom Egypt Securities for information purposes only.
- It is not intended as an offer to buy or sell or a solicitation of an offer to buy or sell the securities mentioned.
- The information & opinions in this publication were prepared by Blom Egypt Securities research department accepts no liability or legal responsibility for losses & damages incurred arising from the use of this publication or its contents.

Blom Egypt Securities
Samir M. Azmi, CFTe, CETA
Senior Technical Analyst
samir.azmi@blomsecurities.com



Most active Stocks

Daily Technical Analysis Report

24 Mar, 2021

Stock Name (Reuters' Code)	Close	Trend	T1	T2	Support	Resistance	SL	Triggers	
								Lower	Upper
Building Materials & Construction									
Arabian cement (ARCC.CA)	2.80	Bearish	—	—	2.75	3.00	—	—	—
El Ezz Steel Rebar's (ESRS.CA)	9.14	Bearish	—	—	8.50	9.80	—	—	—
GB auto (AUTO.CA)	3.85	Dn.-Corr.	—	—	3.65	3.97	3.65	—	—
Orascom construction (ORAS.CA)	90.00	Dn.-Corr.	—	—	88.00	93.00	81.00	—	—
South Valley Cement (SVCE.CA)	1.516	Bearish	—	—	1.44	1.63	—	—	—
Elsweddy Cables (SWDY.CA)	9.10	Bearish	—	—	8.50	9.15	—	—	—
Upper Egypt general contracting (UEGC.CA)	0.725	Bearish	—	—	0.657	0.73	—	—	—
Chemicals									
Abu-Qir fertilizers (ABUK.CA)	20.40	Dn.-Corr.	—	—	19.20	20.90	19.20	—	—
Egyptian Financial & Indust. (EFIC.CA)	10.50	Bearish	—	—	9.70	10.60	—	—	—
Egyptian chemical industries-Kima (EGCH.CA)	3.29	Bearish	—	—	3.05	3.40	—	—	—
Communications									
Orascom investment holding (OIH.CA)	0.294	Bullish	0.302 [√]	0.345	0.30	0.345	0.243	—	—
Telecom Egypt (ETEL.CA)	10.49	Bearish	—	—	10.10	10.85	—	—	—
Financial Services									
Abu Dhabi International Bank (ADIB.CA)	10.70	Bearish	—	—	10.70	11.20	—	—	—
Arabian for investments & development (AIH.CA)	0.475	Bearish	—	—	0.47	0.50	—	—	—
Amer holding group (AMER.CA)	0.835	Bearish	—	—	0.87	0.98	—	—	—
Commercial International Bank (COMI.CA)	59.00	Up-Corr.	—	—	58.50	60.00	58.50	—	—
Export development bank of Egypt (EXPA.CA)	12.00	Bearish	—	—	11.90	12.30	—	—	—
Holding Companies									
Citadel capital (CCAP.CA)	1.216	Bearish	—	—	1.205	1.275	—	—	—
Hermes Holding (HRHO.CA)	14.20	Bearish	—	—	13.50	14.60	—	—	—
Kuwaiti Holding (EKHO.CA)	1.128	Up-Corr.	—	—	1.11	1.17	1.04	—	—
MM group for industry & international trade (MTIE.CA)	10.39	Up-Corr.	—	—	10.10	10.90	8.70	—	—
Orascom financial holding (OFH.CA)	0.278	Bearish	—	—	0.275	0.31	—	—	—
Pioneers holding (PIOH.CA)	4.35	Bearish	—	—	4.15	4.55	—	—	—
Housing & Real Estate									
Egyptian For Tourism Resorts (EGTS.CA)	1.31	Bearish	—	—	1.35	1.47	—	—	—
Elshams housing (ELSH.CA)	3.93	Bearish	—	—	3.70	4.15	—	—	—
Emaar holding (EMFD.CA)	2.33	Bearish	—	—	2.25	2.45	—	—	—
Heliopolis housing & development (HELL.CA)	4.56	Bearish	—	—	4.20	4.55	—	—	—
Medinet Nasr for housing & Deve. (MNHD.CA)	3.68	Up-Corr.	—	—	3.50	3.75	3.50	—	—
6th. October Deve. Inv. (OCDI.CA)	16.80	Bullish	17.00 [√]	18.70	16.00	17.00	13.90	—	—
Palm hills development Co. (PHDC.CA)	1.62	Dn.-Corr.	—	—	1.53	1.67	1.53	—	—
Talaat Mustafa group holding (TMGH.CA)	6.46	Bearish	—	—	6.00	6.45	—	—	—
Mining & Gas									
Alexandria Mineral Oils Co. (AMOC.CA)	2.78	Up-Corr.	—	—	2.67	2.83	2.52	—	—
Sidi Kerir Petrochemicals (SKPC.CA)	10.59	Dn.-Corr.	—	—	9.80	10.60	9.80	—	—
Textiles & Clothes									
Arab Co. for asset management & Deve. (ACAMD.CA)	0.751	Up-Corr.	—	—	0.77	0.83	0.77	—	—
Arab cotton ginning (ACGC.CA)	2.14	Bearish	—	—	2.08	2.25	—	—	—
Oriental Weavers (ORWE.CA)	6.95	Up-Corr.	—	—	6.75	7.10	6.50	—	—
Other Sectors									
Egyptian Media Production City (MPRC.CA)	5.04	Bearish	—	—	5.10	5.65	—	—	—
Egyptian Transport - Egytrans (ETRS.CA)	11.15	Up-Corr.	—	—	11.00	12.10	10.10	—	—
Orascom holding development (ORHD.CA)	5.70	Dn.-Corr.	—	—	5.90	5.40	4.70	—	—
United Arab Shipping (UASG.CA)	0.798	Bearish	—	—	0.78	0.84	—	—	—

Disclaimer

- This publication has been prepared by Blom Egypt Securities for information purposes only.
- It is not intended as an offer to buy or sell or a solicitation of an offer to buy or sell the securities mentioned.
- The information & opinions in this publication were prepared by Blom Egypt Securities research department accepts no liability or legal responsibility for losses & damages incurred arising from the use of this publication or its contents.

Blom Egypt Securities
Samir M. Azmi, CFTe, CETA
Senior Technical Analyst
samir.azmi@blomsecurities.com



Guidelines for using BLOM daily Technical Analysis Report

<u>Close:</u>	Is recorded as the last trade in the session.
<u>Trend:</u>	
Bullish :	The strategy is to buy the dips.
Bearish :	The strategy is to sell the rallies.
Flat :	The strategy is to trade the range between the triggers.
Up-Corr. :	A move against the major trend when it is down.
Dn.-Corr. :	A move against the major trend when it is up.
<u>Targets :</u>	Take some profit by reducing a portion of the position whenever a price target is been hit.
<u>Support :</u>	A level below market price (previous lows) where buyers showed strength, in a bull market buy near the support and don't sell on the resistance. A break below the Support is considered to be a bearish sign.
<u>Resistance :</u>	A level above market price (previous highs) where sellers showed strength, in a bear market sell near the resistance level and don't buy on the support. A break above the resistance is considered to be a bullish sign.
<u>Stop Loss :</u>	Must exit the current position whenever the closing price is (1% to 2%) below the stop loss and confirmed by volume.
<u>Triggers :</u>	The range between the lower trigger and the upper is used for trading, break of any of them, the move would continue in the same direction.
<u>Yellow rows:</u>	indication that the stock closed below/above support, stop-loss, or resistance but the break is not confirmed yet.

Disclaimer

- This publication has been prepared by Blom Egypt Securities for information purposes only.
- It is not intended as an offer to buy or sell or a solicitation of an offer to buy or sell the securities mentioned.
- The information & opinions in this publication were prepared by Blom Egypt Securities research department accepts no liability or legal responsibility for losses & damages incurred arising from the use of this publication or its contents.

Blom Egypt Securities
Samir M. Azmi, CFTe, CETA
Senior Technical Analyst
samir.azmi@blomsecurities.com