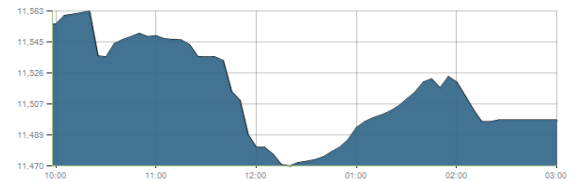


Indices intraday trends

EGX 30

مؤشر EGX 30  
اليوم - 08/11/2021

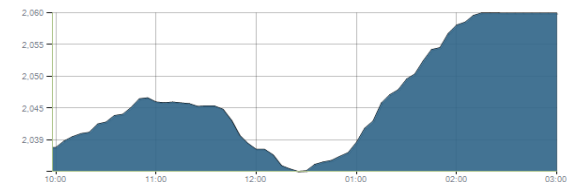


Key Levels

Support 1	11320-11200	Resistance 1	11675
Support 2	11100	Resistance 2	12250

EGX 50 EWI

مؤشر EGX 50 EWI  
اليوم - 08/11/2021

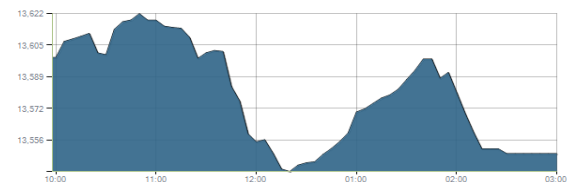


Key Levels

Close		2060.26	
Support 1	1970	Resistance 1	2060
Support 2	1890	Resistance 2	2120

EGX 30 capped

مؤشر EGX 30 Capped  
اليوم - 08/11/2021



Key Levels

Close		13548.64	
Support 1	13470	Resistance 1	13820
Support 2	13330	Resistance 2	14100

Market Commentary:

The EGX30 again closed in red after quiet balanced trading performance in most of the stocks leaving the index levels unchanged and so for our outlook.

Trading volumes remained confirming the balanced performance. Further climbing will only take place by clearing our mentioned resistance level so we highly recommend to watch carefully. Trading should be very selective and conservative keeping close stops placed and respected to reduce market risk. Notice that the mentioned support zone should be respected in any decline as any violation to it will indicate that bears are in control further decline will follow.

Close	11497.51	Trend	Dn.-Corr.
Pre. Close	11555.58	Target 1	—
Change	↓ 58.07 ( 0.50% )	Target 2	—
Day's range	11563.20 — 11468.18	Stop-loss	10680
52week's high	11675.69	52week's low	9769.18.18

Disclaimer

- This publication has been prepared by Blom Egypt Securities for information purposes only.
- It is not intended as an offer to buy or sell or a solicitation of an offer to buy or sell the securities mentioned.
- The information & opinions in this publication were prepared by Blom Egypt Securities research department accepts no liability or legal responsibility for losses & damages incurred arising from the use of this publication or its contents.

**Blom Egypt Securities**  
Samir M. Azmi, CFTe, CETA  
Senior Technical Analyst  
samir.azmi@blomsecurities.com



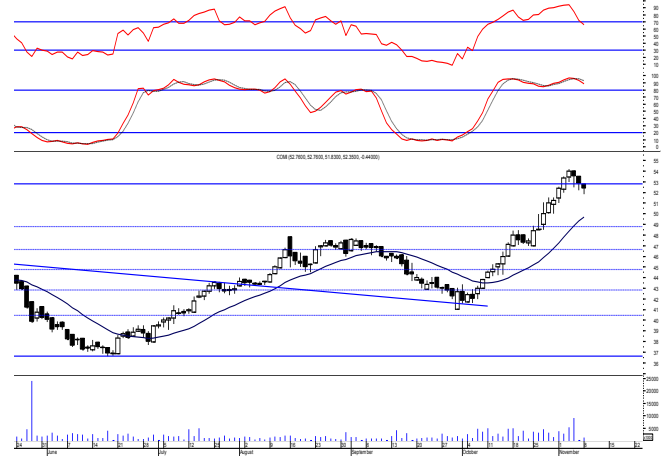
**Commercial international bank (COMI.CA):**

Prices closed again below the important support level 52.80 confirming turning it into resistance as selling pressure dominated. Our levels now are 52.80 acting as resistance while 51.60 serves as support.

We recommend to stay on cash till a clear buy signal is clear so that we can react safely on.

Bullish trend will be confirmed whether by clearing the resistance level 52.80 or by successfully rebound from any of the mentioned supports.

Support levels: 51.60, 48.70  
Resistance levels: 52.80, 57.70

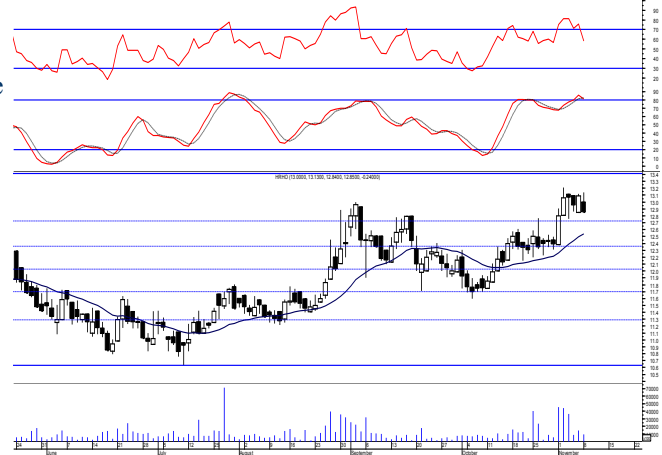


**Hermes Holding (HRHO.CA):**

Prices closed slightly negative after quiet trading performance overwhelmed most of the session within the same range leaving everything in place.

Existing positions are advised to hold keeping stops placed and respected below 12.10 as any decline below will give back the hand to selling party.

Support levels: (12-75-12.60), 12.10  
Resistance levels: 13.40, 14.25



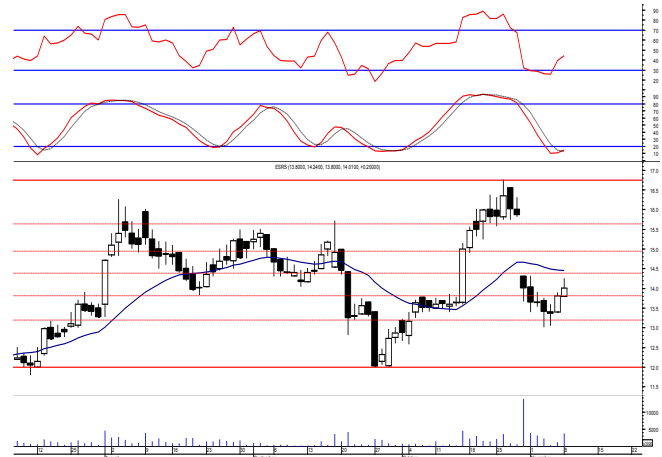
**El-Ezz steel rebar's' (ESRS.CA):**

Prices confirmed clearing the resistance level 13.80 turning it into support.

As we said, by managing to confirm closing above the mentioned level, further climbing is now expected to the coming resistance level 14.50 & may extend to 15.60 where we may safely use for quick trading.

Stops should be placed and respected below 13.20

Support levels: 14.50, 13.80  
Resistance levels: 15.20, 15.60



**Disclaimer**

- This publication has been prepared by Blom Egypt Securities for information purposes only.
- It is not intended as an offer to buy or sell or a solicitation of an offer to buy or sell the securities mentioned.
- The information & opinions in this publication were prepared by Blom Egypt Securities research department accepts no liability or legal responsibility for losses & damages incurred arising from the use of this publication or its contents.

**Blom Egypt Securities**  
**Samir M. Azmi, CFTe, CETA**  
**Senior Technical Analyst**  
[samir.azmi@blomsecurities.com](mailto:samir.azmi@blomsecurities.com)



Most active Stocks

Daily Technical Analysis Report

9 Nov, 2021

Stock Name (Reuters' Code)	Close	Trend	T1	T2	Support	Resistance	SL	Triggers	
								Lower	Upper
<b>Building Materials &amp; Construction</b>									
Arabian cement (ARCC.CA)	3.75	Up-Corr.	—	—	3.45	3.80	3.20	—	—
El Ezz Steel Rebar's (ESRS.CA)	14.01	Dn.-Corr.	—	—	13.50	14.50	13.20	—	—
GB auto (AUTO.CA)	4.10	Dn.-Corr.	—	—	4.10	4.50	3.75	—	—
Orascom construction (ORAS.CA)	70.93	Dn.-Corr.	—	—	68.50	71.70	68.50	—	—
South Valley Cement (SVCE.CA)	1.449	Bearish	—	—	1.324	1.50	—	—	—
Elsweddy Cables (SWDY.CA)	8.41	UP-Corr.	—	—	8.35	8.85	7.90	—	—
Upper Egypt general contracting (UEGC.CA)	0.648	Up-Corr.	—	—	0.614	0.65	0.57	—	—
<b>Chemicals</b>									
Abu-Qir fertilizers (ABUK.CA)	19.50	Dn.-Corr.	—	—	19.20	19.90	19.20	—	—
Egyptian Financial & Indust. (EFIC.CA)	12.10	Bearish	—	—	11.85	12.15	—	—	—
Egyptian chemical industries-Kima (EGCH.CA)	3.47	Up-Corr.	—	—	3.30	3.55	3.00	—	—
<b>Communications</b>									
Fawry for banking tech. & electronic payment (FWRY.CA)	14.26	Up-Corr.	—	—	13.30	14.90	14.90	—	—
Orascom investment holding (OIH.CA)	0.244	Dn.-Corr.	—	—	0.215	0.25	0.215	—	—
Telecom Egypt (ETEL.CA)	13.86	Dn.-Corr.	—	—	13.80	14.30	12.90	—	—
<b>Financial Services</b>									
Abu Dhabi International Bank (ADIB.CA)	14.00	Up-Corr.	—	—	12.60	14.15	12.60	—	—
Arabian for investments & development (AIH.CA)	0.366	Bearish	—	—	0.31	0.37	—	—	—
Amer holding group (AMER.CA)	1.021	Dn.-Corr.	—	—	1.02	1.14	0.96	—	—
Commercial International Bank (COMI.CA)	52.35	Bullish	—	—	51.60	52.80	46.60	—	—
Export development bank of Egypt (EXPA.CA)	9.30	Up-Corr.	—	—	9.15	10.10	9.15	—	—
<b>Holding Companies</b>									
Citadel capital (CCAP.CA)	1.267	Up-Corr.	—	—	1.24	1.305	1.09	—	—
Hermes Holding (HRHO.CA)	12.85	Dn.-Corr.	—	—	12.60	13.40	11.25	—	—
Kuwaiti Holding (EKHO.CA)	1.372	Bullish	1.23√	1.39√	1.23	1.39	1.11	—	—
MM group for industry & international trade (MTIE.CA)	6.22	Bearish	—	—	5.90	6.20	—	—	—
Orascom financial holding (OFH.CA)	0.228	Bearish	—	—	0.195	0.23	—	—	—
<b>Housing &amp; Real Estate</b>									
Egyptian For Tourism Resorts (EGTS.CA)	1.43	Bearish	—	—	1.21	1.47	—	—	—
Elshams housing (ELSH.CA)	6.73	Up-Corr.	—	—	6.05	6.80	5.40	—	—
Emaar holding (EMFD.CA)	2.61	Dn.-Corr.	—	—	2.50	2.645	2.28	—	—
Heliopolis housing & development (HELLI.CA)	4.22	Bearish	—	—	4.10	4.60	—	—	—
Medinet Nasr for housing & Deve. (MNHD.CA)	2.29	Up-Corr.	—	—	2.16	2.27	2.16	—	—
6th. October Deve. Inv. (OCDI.CA)	18.18	Flat	—	—	—	—	16.90	17.90 — 19.25	—
Palm hills development Co. (PHDC.CA)	1.872	Dn.-Corr.	—	—	1.73	1.91	1.73	—	—
Talaat Mustafa group holding (TMGH.CA)	7.56	Dn.-Corr.	—	—	7.50	7.90	6.90	—	—
<b>Mining &amp; Gas</b>									
Alexandria Mineral Oils Co. (AMOC.CA)	4.07	Bullish	4.40√	4.80	4.00	4.40	3.55	—	—
Sidi Kerir Petrochemicals (SKPC.CA)	7.43	Up-Corr.	—	—	7.20	7.75	7.20	—	—
<b>Textiles &amp; Clothes</b>									
Arab Co. for asset management & Deve. (ACAMD.CA)	0.446	Bearish	—	—	0.43	0.502	—	—	—
Arab cotton ginning (ACGC.CA)	1.687	Up-Corr.	—	—	1.62	1.778	1.455	—	—
Oriental Weavers (ORWE.CA)	8.37	Dn.-Corr.	—	—	8.05	8.55	7.50	—	—
<b>Other Sectors</b>									
Egyptian Media Production City (MPRC.CA)	4.98	Up-Corr.	—	—	4.75	5.10	4.40	—	—
Egyptian Transport - Egytrans (ETRS.CA)	12.51	Up-Corr.	—	—	12.50	13.60	12.50	—	—
Orascom holding development (ORHD.CA)	5.39	Up-Corr.	—	—	5.10	5.60	4.64	—	—
United Arab Shipping (UASG.CA)	0.941s	Bearish	—	—	0.80	0.945	—	—	—

Disclaimer

- This publication has been prepared by Blom Egypt Securities for information purposes only.
- It is not intended as an offer to buy or sell or a solicitation of an offer to buy or sell the securities mentioned.
- The information & opinions in this publication were prepared by Blom Egypt Securities research department accepts no liability or legal responsibility for losses & damages incurred arising from the use of this publication or its contents.

**Blom Egypt Securities**  
Samir M. Azmi, CFTe, CETA  
Senior Technical Analyst  
samir.azmi@blomsecurities.com



**Guidelines for using BLOM daily Technical Analysis Report**

<b><u>Close:</u></b>	Is recorded as the last trade in the session.
<b><u>Trend:</u></b>	
<b>Bullish :</b>	The strategy is to buy the dips.
<b>Bearish :</b>	The strategy is to sell the rallies.
<b>Flat :</b>	The strategy is to trade the range between the triggers.
<b>Up-Corr. :</b>	A move against the major trend when it is down.
<b>Dn.-Corr. :</b>	A move against the major trend when it is up.
<b><u>Targets :</u></b>	Take some profit by reducing a portion of the position whenever a price target is been hit.
<b><u>Support :</u></b>	A level below market price (previous lows) where buyers showed strength, in a bull market buy near the support and don't sell on the resistance. A break below the Support is considered to be a bearish sign.
<b><u>Resistance :</u></b>	A level above market price (previous highs) where sellers showed strength, in a bear market sell near the resistance level and don't buy on the support. A break above the resistance is considered to be a bullish sign.
<b><u>Stop Loss :</u></b>	Must exit the current position whenever the closing price is (1% to 2%) below the stop loss and confirmed by volume.
<b><u>Triggers :</u></b>	The range between the lower trigger and the upper is used for trading, break of any of them, the move would continue in the same direction.
<b><u>Yellow rows:</u></b>	indication that the stock closed below/above support, stop-loss, or resistance but the break is not confirmed yet.

**Disclaimer**

- This publication has been prepared by Blom Egypt Securities for information purposes only.
- It is not intended as an offer to buy or sell or a solicitation of an offer to buy or sell the securities mentioned.
- The information & opinions in this publication were prepared by Blom Egypt Securities research department accepts no liability or legal responsibility for losses & damages incurred arising from the use of this publication or its contents.

**Blom Egypt Securities**  
**Samir M. Azmi, CFTe, CETA**  
**Senior Technical Analyst**  
[samir.azmi@blomsecurities.com](mailto:samir.azmi@blomsecurities.com)