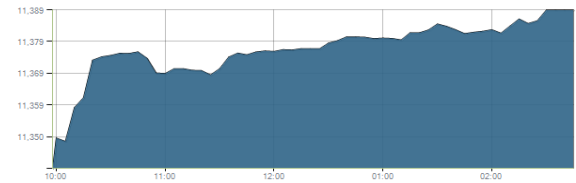




Indices intraday trends

EGX 30

مؤشر EGX 30  
اليوم - 13/01/2021

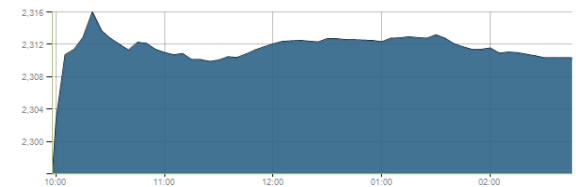


Key Levels

Support 1	11230	Resistance 1	11450-11500
Support 2	11100-10900	Resistance 2	11850

EGX 50 EWI

مؤشر EGX 50 EWI  
اليوم - 13/01/2021

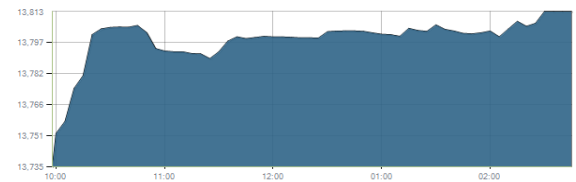


Key Levels

Close		2310.57	
Support 1	2300	Resistance 1	2360
Support 2	2200	Resistance 2	2430

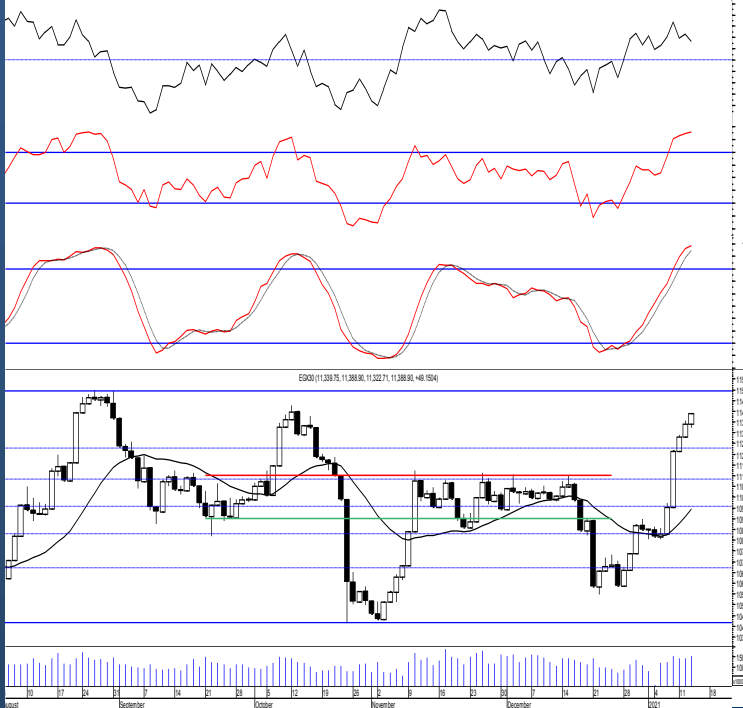
EGX 30 capped

مؤشر EGX 30 Capped  
اليوم - 13/01/2021



Key Levels

Close		13812.93	
Support 1	13460	Resistance 1	13850
Support 2	13170	Resistance 2	14200



Market Commentary:

The EGX30 inched higher as buying process continued closing the index near the high fueled by increasing volumes. Further rally is still expected to the strong resistance zone 11450-11500 where we should watch.

Short term trades may conservatively be opened above the mentioned level.

Existing positions are advised to hold and may safely add and may use the coming mentioned zone to trade on bearing in mind that breaking it will turn the intermediate term trend form flat to up setting new target levels

Close	11388.90	Trend	Bullish
Pre. Close	11339.75	Target 1	11450
Change	↑ 49.15 ( 0.43% )	Target 2	11850
Day's range	11322.71 113	Stop-loss	10425
52week's high	14831.20	52week's low	8113.82

Disclaimer

- This publication has been prepared by Blom Egypt Securities for information purposes only.
- It is not intended as an offer to buy or sell or a solicitation of an offer to buy or sell the securities mentioned.
- The information & opinions in this publication were prepared by Blom Egypt Securities research department accepts no liability or legal responsibility for losses & damages incurred arising from the use of this publication or its contents.

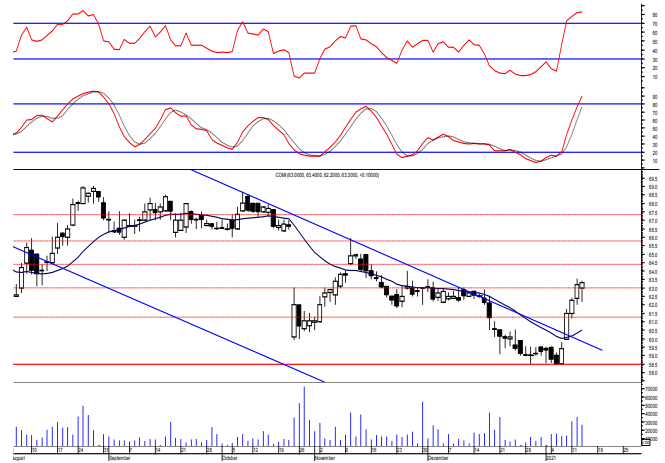
**Blom Egypt Securities**  
Samir M. Azmi, CFTe, CETA  
Senior Technical Analyst  
samir.azmi@blomsecurities.com



**Commercial international bank (COMI.CA):**

Prices remained narrowly flat closing slightly positive above the resistance level 63.00 confirming the breakout. As we said, our coming resistance levels 64.50 & 66.50 is now expected where may use them to trade gradually on. Protective stop should be placed below 60.00.

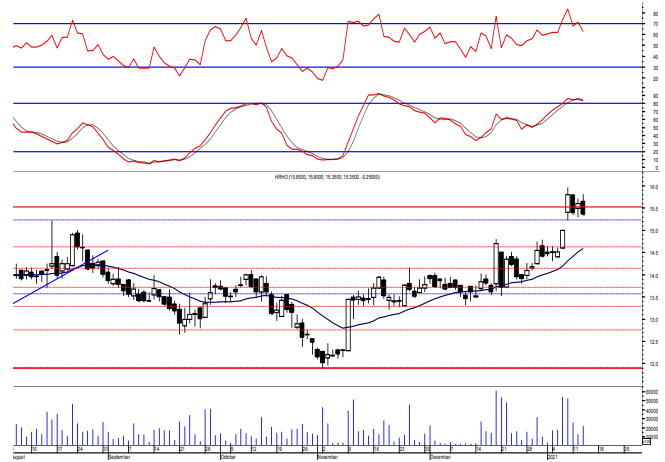
Support levels: 63.00, 60.00  
Resistance levels: 64.50, 66.00



**Hermes Holding (HRHO.CA):**

Prices remained flat closing in red within the support zone 15.55-15.25 where as we said we should watch very carefully keeping positive view intact. Notice that it is very important to defend the mentioned zone to prove that buyers are still in control. New target zone within 16.60-17.10 where we believe it represents strong retracement level where may use trade on. Close stops should always be placed and respected to protect the downside.

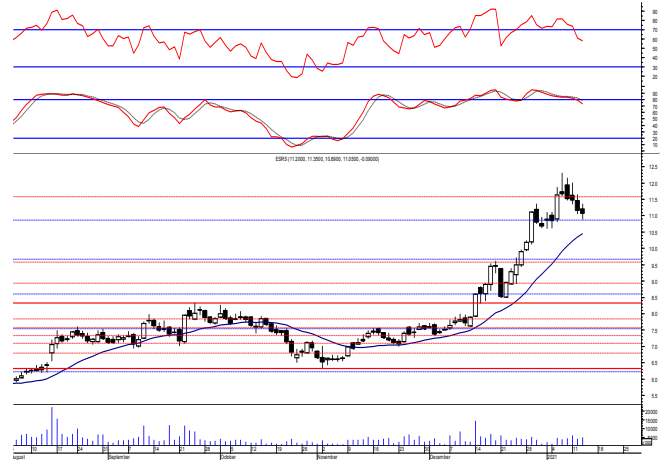
Support levels: 15.55-15.25, 14.60  
Resistance levels: 16.60-17.10, 17.80



**El-Ezz steel rebar's' (ESRS.CA):**

Prices remained flat as balanced trading performance dominated closing slightly negative keeping everything in place. Notice that any break to the mentioned resistance will confirm that buyers are still in control and will lead to further extension to 12.45 where we may continue trading on. Trailing stop should always be used to protect profits.

Support levels: 10.90, 9.80  
Resistance levels: 11.60, 12.45



**Disclaimer**

- This publication has been prepared by Blom Egypt Securities for information purposes only.
- It is not intended as an offer to buy or sell or a solicitation of an offer to buy or sell the securities mentioned.
- The information & opinions in this publication were prepared by Blom Egypt Securities research department accepts no liability or legal responsibility for losses & damages incurred arising from the use of this publication or its contents.

**Blom Egypt Securities**  
**Samir M. Azmi, CFTe, CETA**  
**Senior Technical Analyst**  
[samir.azmi@blomsecurities.com](mailto:samir.azmi@blomsecurities.com)



Most active Stocks

Daily Technical Analysis Report

14 Jan, 2021

Stock Name (Reuters' Code)	Close	Trend	T1	T2	Support	Resistance	SL	Triggers	
								Lower	Upper
<b>Building Materials &amp; Construction</b>									
Arabian cement (ARCC.CA)	3.62	Bullish	3.85	4.15	3.60	3.85	3.00	—	—
El Ezz Steel Rebar's (ESRS.CA)	11.05	Bullish	11.60√	12.45	11.00	11.60	10.60	—	—
Egyptian iron & steel; Co. (IRON.CA)	3.36	Dn.-Corr.	—	—	3.35	3.50	2.80	—	—
GB auto (AUTO.CA)	3.58	Bullish	3.60√	3.80	3.60	3.80	2.95	—	—
Orascom construction (ORAS.CA)	85.00	Flat	—	—	—	—	78.00	81.00	86.00
South Valley Cement (SVCE.CA)	1.904	Up-Corr.	—	—	1.84	1.975	1.58	—	—
Elswedey Cables (SWDY.CA)	10.22	Bullish	9.60√	9.90√	9.25	10.20	8.50	—	—
Upper Egypt general contracting (UEGC.CA)	0.85	Up-Corr.	—	—	0.815	0.855	0.74	—	—
<b>Chemicals</b>									
Abu-Qir fertilizers (ABUK.CA)	20.60	Dn.-Corr.	—	—	19.20	20.50	19.20	—	—
Egyptian Financial & Indust. (EFIC.CA)	12.69	Up-Corr.	—	—	11.85	12.80	11.10	—	—
Egyptian chemical industries-Kima (EGCH.CA)	4.26	Up-Corr.	—	—	4.25	4.40	3.80	—	—
<b>Communications</b>									
Orascom investment holding (OIH.CA)	0.554	Up-Corr.	—	—	0.49	0.555	0.49	—	—
Telecom Egypt (ETEL.CA)	11.85	Up-Corr.	—	—	11.85	12.20	11.40	—	—
<b>Financial Services</b>									
Abu Dhabi International Bank (ADIB.CA)	12.00	Dn.-Corr.	—	—	12.00	12.40	11.20	—	—
Arabian for investments & development (AIH.CA)	0.681	Dn.-Corr.	—	—	0.68	0.71	0.59	—	—
Amer holding group (AMER.CA)	1.245	Bullish	1.25√	1.40	1.25	1.40	0.98	—	—
Commercial International Bank (COMI.CA)	63.30	Up-Corr.	—	—	63.00	64.50	58.50	—	—
Export development bank of Egypt (EXPA.CA)	13.71	Up-Corr.	—	—	13.80	14.60	13.80	—	—
<b>Holding Companies</b>									
CI capital holding for financial investments (CICH.CA)	3.97	Up-Corr.	—	—	3.75	4.00	3.55	—	—
Citadel capital (CCAP.CA)	1.604	Up-Corr.	—	—	1.59	1.67	1.39	—	—
Hermes Holding (HRHO.CA)	15.35	Bullish	16.60	17.80	15.20	17.10	14.60	—	—
Kuwaiti Holding (EKHO.CA)	1.012	Bearish	—	—	0.97	1.04	—	—	—
Pioneers holding (PIOH.CA)	4.12	Up-Corr.	—	—	3.85	4.15	3.60	—	—
<b>Housing &amp; Real Estate</b>									
Egyptian For Tourism Resorts (EGTS.CA)	1.53	Up-Corr.	—	—	1.51	1.618	1.30	—	—
Elshams housing (ELSH.CA)	4.92	Up-Corr.	—	—	4.75	5.35	4.30	—	—
Emaar holding (EMFD.CA)	2.53	Dn.-Corr.	—	—	2.48	2.57	2.25	—	—
Heliopolis housing & development (HELLI.CA)	6.14	Up-Corr.	—	—	5.90	6.20	5.50	—	—
Medinet Nasr for housing & Deve. (MNHD.CA)	3.95	Up-Corr.	—	—	3.80	3.97	3.45	—	—
6th. October Deve. Inv. (OCDI.CA)	15.55	Dn.-Corr.	—	—	14.80	15.80	13.90	—	—
Palm hills development Co. (PHDC.CA)	1.455	Up-Corr.	—	—	1.40	1.462	1.28	—	—
Talaat Mustafa group holding (TMGH.CA)	6.90	Up-Corr.	—	—	6.65	7.00	6.30	—	—
<b>Mining &amp; Gas</b>									
Alexandria Mineral Oils Co. (AMOC.CA)	3.27	Dn.-Corr.	—	—	3.13	3.37	3.00	—	—
Sidi Kerir Petrochemicals (SKPC.CA)	10.97	Bullish	9.85√	10.60√	10.60	11.10	9.80	—	—
<b>Textiles &amp; Clothes</b>									
Arab Co. for asset management & Deve. (ACAMD.CA)	5.45	Up-Corr.	—	—	5.20	5.50	4.65	—	—
Arab cotton ginning (ACGC.CA)	3.26	Up-Corr.	—	—	3.20	3.45	2.85	—	—
Oriental Weavers (ORWE.CA)	7.21	Up-Corr.	—	—	7.00	7.50	6.50	—	—
<b>Other Sectors</b>									
Egyptian Media Production City (MPRC.CA)	7.15	Up-Corr.	—	—	7.00	7.55	5.40	—	—
Egyptian Transport - Egytrans (ETRS.CA)	11.39	Up-Corr.	—	—	11.00	11.65	9.10	—	—
Orascom holding development (ORHD.CA)	4.81	Dn.-Corr.	—	—	4.45	4.85	4.45	—	—
United Arab Shipping (UASG.CA)	1.145	Up-Corr.	—	—	1.08	1.17	0.90	—	—

Disclaimer

- This publication has been prepared by Blom Egypt Securities for information purposes only.
- It is not intended as an offer to buy or sell or a solicitation of an offer to buy or sell the securities mentioned.
- The information & opinions in this publication were prepared by Blom Egypt Securities research department accepts no liability or legal responsibility for losses & damages incurred arising from the use of this publication or its contents.

**Blom Egypt Securities**  
Samir M. Azmi, CFTe, CETA  
Senior Technical Analyst  
samir.azmi@blomsecurities.com



**Guidelines for using BLOM daily Technical Analysis Report**

<b><u>Close:</u></b>	Is recorded as the last trade in the session.
<b><u>Trend:</u></b>	
<b>Bullish :</b>	The strategy is to buy the dips.
<b>Bearish :</b>	The strategy is to sell the rallies.
<b>Flat :</b>	The strategy is to trade the range between the triggers.
<b>Up-Corr. :</b>	A move against the major trend when it is down.
<b>Dn.-Corr. :</b>	A move against the major trend when it is up.
<b><u>Targets :</u></b>	Take some profit by reducing a portion of the position whenever a price target is been hit.
<b><u>Support :</u></b>	A level below market price (previous lows) where buyers showed strength, in a bull market buy near the support and don't sell on the resistance. A break below the Support is considered to be a bearish sign.
<b><u>Resistance :</u></b>	A level above market price (previous highs) where sellers showed strength, in a bear market sell near the resistance level and don't buy on the support. A break above the resistance is considered to be a bullish sign.
<b><u>Stop Loss :</u></b>	Must exit the current position whenever the closing price is (1% to 2%) below the stop loss and confirmed by volume.
<b><u>Triggers :</u></b>	The range between the lower trigger and the upper is used for trading, break of any of them, the move would continue in the same direction.
<b><u>Yellow rows:</u></b>	indication that the stock closed below/above support, stop-loss, or resistance but the break is not confirmed yet.

**Disclaimer**

- This publication has been prepared by Blom Egypt Securities for information purposes only.
- It is not intended as an offer to buy or sell or a solicitation of an offer to buy or sell the securities mentioned.
- The information & opinions in this publication were prepared by Blom Egypt Securities research department accepts no liability or legal responsibility for losses & damages incurred arising from the use of this publication or its contents.

**Blom Egypt Securities**  
**Samir M. Azmi, CFTe, CETA**  
**Senior Technical Analyst**  
**samir.azmi@blomsecurities.com**