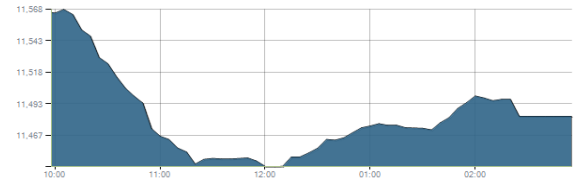




Indices intraday trends

EGX 30

مؤشر EGX 30  
اليوم - 20/12/2021

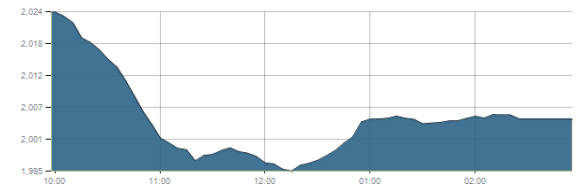


Key Levels

Support 1	11320-11200	Resistance 1	11675
Support 2	11100	Resistance 2	12250

EGX 50 EWI

مؤشر EGX 50 EWI  
اليوم - 20/12/2021

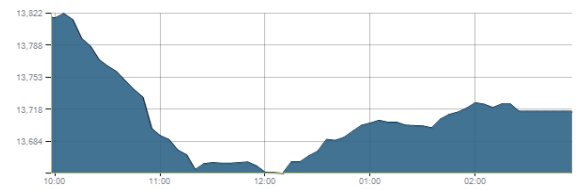


Key Levels

Close		2004.56	
Support 1	1970	Resistance 1	2060
Support 2	1860	Resistance 2	2150

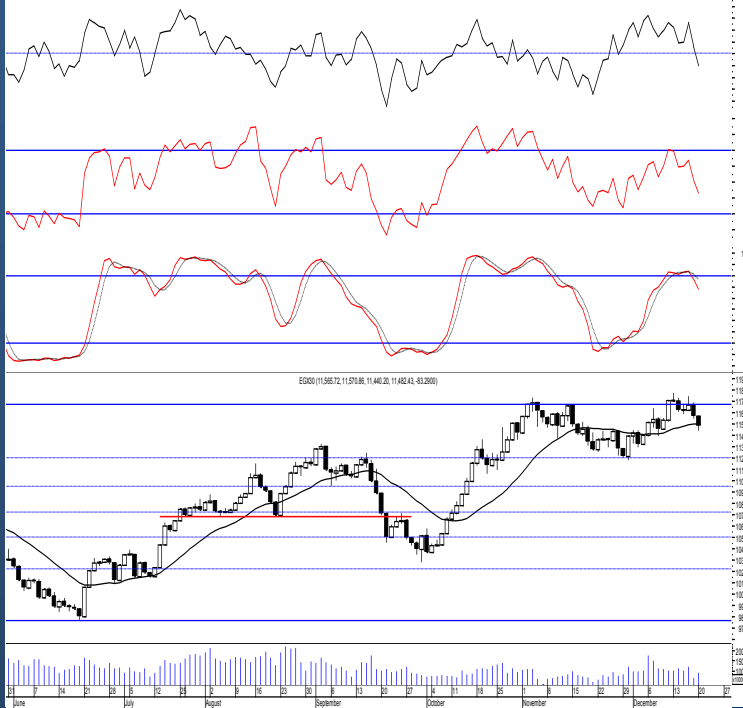
EGX 30 capped

مؤشر EGX 30 Capped  
اليوم - 20/12/2021



Key Levels

Close		13716.04	
Support 1	13800	Resistance 1	14150
Support 2	13550	Resistance 2	14325



Market Commentary:

The EGX30 witnessed a downward move ahead of trading below the minor support level 11450 before managing to rebound back above closing the index within the same levels leaving everything in place. Confirming above the mentioned level only will turn the medium term trend up and targets will be 12250 & 12850, while short term, targets will be 11900 & 12070. Trading should be very selective and conservative keeping close stops placed and respected to reduce market risk. Notice that the mentioned support zone should be respected in any decline as any violation to it will indicate that bears are in control further decline will follow.

Close	11482.43	Trend	Flat
Pre. Close	11565.72	Target 1	—
Change	↓ 83.29 ( 0.72% )	Target 2	—
Day's range	11570.86 — 11440.20	Stop-loss	10680
52week's high	11675.69	52week's low	9769.18.18

Disclaimer

- This publication has been prepared by Blom Egypt Securities for information purposes only.
- It is not intended as an offer to buy or sell or a solicitation of an offer to buy or sell the securities mentioned.
- The information & opinions in this publication were prepared by Blom Egypt Securities research department accepts no liability or legal responsibility for losses & damages incurred arising from the use of this publication or its contents.

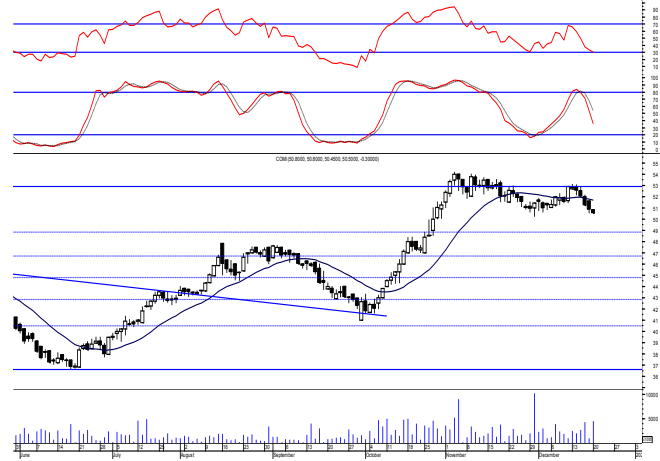
**Blom Egypt Securities**  
Samir M. Azmi, CFTe, CETA  
Senior Technical Analyst  
samir.azmi@blomsecurities.com



**Commercial international bank (COMI.CA):**

Prices extended lower as selling pressure dominated closing within the same range keeping our outlook unchanged. Failing to defend the mentioned support is considered a negative sign indicating that bears are starting to gain the short term technical advantage. We recommend existing positions to hold, while new positions to wait for a confirmed buy signal to react safely on.

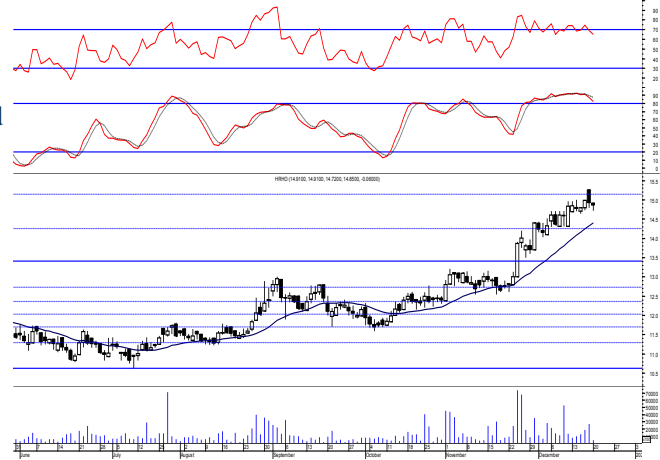
Support levels: 49.80, 48.80  
Resistance levels: 51.60, 52.80



**Hermes Holding (HRHO.CA):**

Prices traded narrowly flat closing slightly negative within the same range leaving everything in place. We recommended to trade on the mentioned target, now we recommend to stay on cash till a confirmed buy signal is clear. Held positions are advised to keep protective stop placed and respected below 14.45.

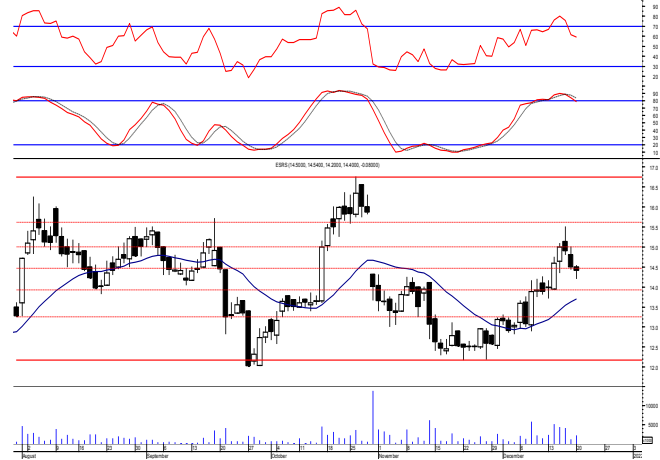
Support levels: 14.45, 13.40  
Resistance levels: 16.35, 17.40



**El-Ezz steel rebar's' (ESRS.CA):**

Prices traded narrowly flat closing slightly negative keeping everything in place where as we said we should keep watching the mentioned supports. Yet, it's recommended to stay on cash and wait for a confirmed buy signal to react safely on.

Support levels: 13.80, 13.20  
Resistance levels: 14.50, 15.65



**Disclaimer**

- This publication has been prepared by Blom Egypt Securities for information purposes only.
- It is not intended as an offer to buy or sell or a solicitation of an offer to buy or sell the securities mentioned.
- The information & opinions in this publication were prepared by Blom Egypt Securities research department accepts no liability or legal responsibility for losses & damages incurred arising from the use of this publication or its contents.

**Blom Egypt Securities**  
**Samir M. Azmi, CFTe, CETA**  
**Senior Technical Analyst**  
**samir.azmi@blomsecurities.com**



Most active Stocks

Daily Technical Analysis Report

21 Dec, 2021

Stock Name (Reuters' Code)	Close	Trend	T1	T2	Support	Resistance	SL	Triggers	
								Lower	Upper
<b>Building Materials &amp; Construction</b>									
Arabian cement (ARCC.CA)	4.20	Bullish	4.60	4.90	4.10	4.60	3.60	---	---
El Ezz Steel Rebar's (ESRS.CA)	14.40	Up-Corr.	---	---	13.80	14.50	13.20	---	---
GB auto (AUTO.CA)	4.80	Dn.-Corr.	---	---	4.65	5.00	4.35	---	---
Orascom construction (ORAS.CA)	75.01	Dn.-Corr.	---	---	74.00	77.50	68.50	---	---
South Valley Cement (SVCE.CA)	1.383	Up-Corr.	---	---	1.32	1.45	1.243	---	---
Elsweddy Cables (SWDY.CA)	9.49	Bullish	9.70	10.25	9.40	10.25	8.60	---	---
Upper Egypt general contracting (UEGC.CA)	0.66	Up-Corr.	---	---	0.65	0.69	0.57	---	---
<b>Chemicals</b>									
Abu-Qir fertilizers (ABUK.CA)	19.98	Up-Corr.	---	---	19.90	20.60	17.90	---	---
Egyptian Financial & Indust. (EFIC.CA)	12.89	Up-Corr.	---	---	12.50	13.70	11.40	---	---
Egyptian chemical industries-Kima (EGCH.CA)	3.55	Up-Corr.	---	---	3.50	3.85	3.00	---	---
<b>Communications</b>									
Fawry for banking tech. & electronic payment (FWRY.CA)	11.80	Bearish	---	---	10.55	11.80	---	---	---
Orascom investment holding (OIH.CA)	0.235	Up-Corr.	---	---	0.23	0.26	0.20	---	---
Telecom Egypt (ETEL.CA)	16.10	Dn.-Corr.	---	---	15.15	16.05	14.00	---	---
<b>Financial Services</b>									
Abu Dhabi International Bank (ADIB.CA)	15.21	Up-Corr.	---	---	14.60	15.55	12.60	---	---
Arabian for investments & development (AIH.CA)	0.341	Up-Corr.	---	---	0.335	0.37	0.305	---	---
Amer holding group (AMER.CA)	0.93	Up-Corr.	---	---	0.85	0.95	0.85	---	---
Commercial International Bank (COMI.CA)	50.50	Dn.-Corr.	---	---	49.80	51.60	46.60	---	---
Export development bank of Egypt (EXPA.CA)	8.95	Up-Corr.	---	---	8.60	9.20	8.60	---	---
<b>Holding Companies</b>									
Citadel capital (CCAP.CA)	1.209	Up-Corr.	---	---	1.16	1.23	1.09	---	---
Hermes Holding (HRHO.CA)	14.85	Bullish	14.25√	15.20	14.45	15.20	11.25	---	---
Kuwaiti Holding (EKHO.CA)	1.331	Dn.-Corr.	---	---	1.315	1.36	1.22	---	---
MM group for industry & international trade (MTIE.CA)	6.16	Up-Corr.	---	---	6.15	6.40	5.60	---	---
Orascom financial holding (OFH.CA)	0.21	Bearish	---	---	0.195	0.23	---	---	---
<b>Housing &amp; Real Estate</b>									
Egyptian For Tourism Resorts (EGTS.CA)	1.40	Up-Corr.	---	---	1.23	1.45	1.23	---	---
Elshams housing (ELSH.CA)	7.58	Bearish	---	---	7.25	7.80	---	---	---
Emaar holding (EMFD.CA)	2.97	Bullish	3.00√	3.20	2.80	3.10	2.70	---	---
Heliopolis housing & development (HELI.CA)	6.78	Dn.-Corr.	---	---	6.30	6.95	5.50	---	---
Medinet Nasr for housing & Deve. (MNHD.CA)	2.62	Up-Corr.	---	---	2.60	2.77	2.52	---	---
Palm hills development Co. (PHDC.CA)	1.889	Up-Corr.	---	---	1.83	1.94	1.72	---	---
Talaat Mustafa group holding (TMGH.CA)	8.72	Bullish	8.20√	8.90√	8.20	8.90	6.90	---	---
<b>Mining &amp; Gas</b>									
Alexandria Mineral Oils Co. (AMOC.CA)	3.44	Up-Corr.	---	---	3.33	3.55	3.33	---	---
Sidi Kerir Petrochemicals (SKPC.CA)	7.00	Up-Corr.	---	---	6.80	7.25	6.30	---	---
<b>Textiles &amp; Clothes</b>									
Arab Co. for asset management & Deve. (ACAMD.CA)	0.447	Up-Corr.	---	---	0.425	0.50	0.35	---	---
Arab cotton ginning (ACGC.CA)	1.633	Up-Corr.	---	---	1.60	1.66	1.455	---	---
Oriental Weavers (ORWE.CA)	8.22	Dn.-Corr.	---	---	8.05	8.55	7.50	---	---
<b>Other Sectors</b>									
Egyptian Media Production City (MPRC.CA)	5.92	Up-Corr.	---	---	5.65	6.00	4.80	---	---
Egyptian Transport - Egytrans (ETRS.CA)	10.80	Up-Corr.	---	---	9.80	11.30	9.80	---	---
Orascom holding development (ORHD.CA)	5.50	Up-Corr.	---	---	5.55	5.80	5.15	---	---
United Arab Shipping (UASG.CA)	0.956	Up-Corr.	---	---	0.92	0.985	0.80	---	---

Disclaimer

- This publication has been prepared by Blom Egypt Securities for information purposes only.
- It is not intended as an offer to buy or sell or a solicitation of an offer to buy or sell the securities mentioned.
- The information & opinions in this publication were prepared by Blom Egypt Securities research department accepts no liability or legal responsibility for losses & damages incurred arising from the use of this publication or its contents.

**Blom Egypt Securities**  
Samir M. Azmi, CFTe, CETA  
Senior Technical Analyst  
samir.azmi@blomsecurities.com



### Guidelines for using BLOM daily Technical Analysis Report

<b><u>Close:</u></b>	Is recorded as the last trade in the session.
<b><u>Trend:</u></b>	
<b>Bullish :</b>	The strategy is to buy the dips.
<b>Bearish :</b>	The strategy is to sell the rallies.
<b>Flat :</b>	The strategy is to trade the range between the triggers.
<b>Up-Corr. :</b>	A move against the major trend when it is down.
<b>Dn.-Corr. :</b>	A move against the major trend when it is up.
<b><u>Targets :</u></b>	Take some profit by reducing a portion of the position whenever a price target is been hit.
<b><u>Support :</u></b>	A level below market price (previous lows) where buyers showed strength, in a bull market buy near the support and don't sell on the resistance. A break below the Support is considered to be a bearish sign.
<b><u>Resistance :</u></b>	A level above market price (previous highs) where sellers showed strength, in a bear market sell near the resistance level and don't buy on the support. A break above the resistance is considered to be a bullish sign.
<b><u>Stop Loss :</u></b>	Must exit the current position whenever the closing price is (1% to 2%) below the stop loss and confirmed by volume.
<b><u>Triggers :</u></b>	The range between the lower trigger and the upper is used for trading, break of any of them, the move would continue in the same direction.
<b><u>Yellow rows:</u></b>	indication that the stock closed below/above support, stop-loss, or resistance but the break is not confirmed yet.

#### Disclaimer

- This publication has been prepared by Blom Egypt Securities for information purposes only.
- It is not intended as an offer to buy or sell or a solicitation of an offer to buy or sell the securities mentioned.
- The information & opinions in this publication were prepared by Blom Egypt Securities research department accepts no liability or legal responsibility for losses & damages incurred arising from the use of this publication or its contents.

**Blom Egypt Securities**  
**Samir M. Azmi, CFTe, CETA**  
**Senior Technical Analyst**  
[samir.azmi@blomsecurities.com](mailto:samir.azmi@blomsecurities.com)