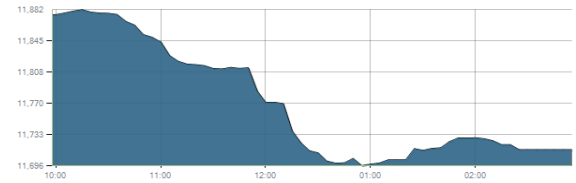




Indices intraday trends

EGX 30

مؤشر EGX 30
اليوم - 19/01/2022

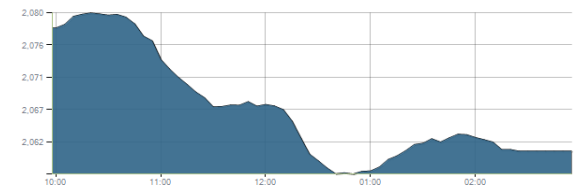


Key Levels

Support 1	11675	Resistance 1	11900
Support 2	11440	Resistance 2	12250

EGX 50 EWI

مؤشر EGX 50 EWI
اليوم - 19/01/2022

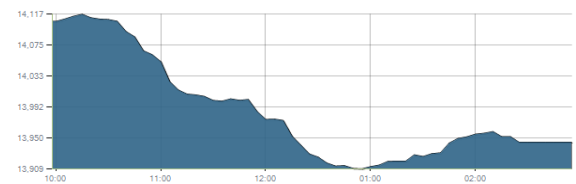


Key Levels

Close		2061.11	
Support 1	2060	Resistance 1	2150
Support 2	1990	Resistance 2	2210

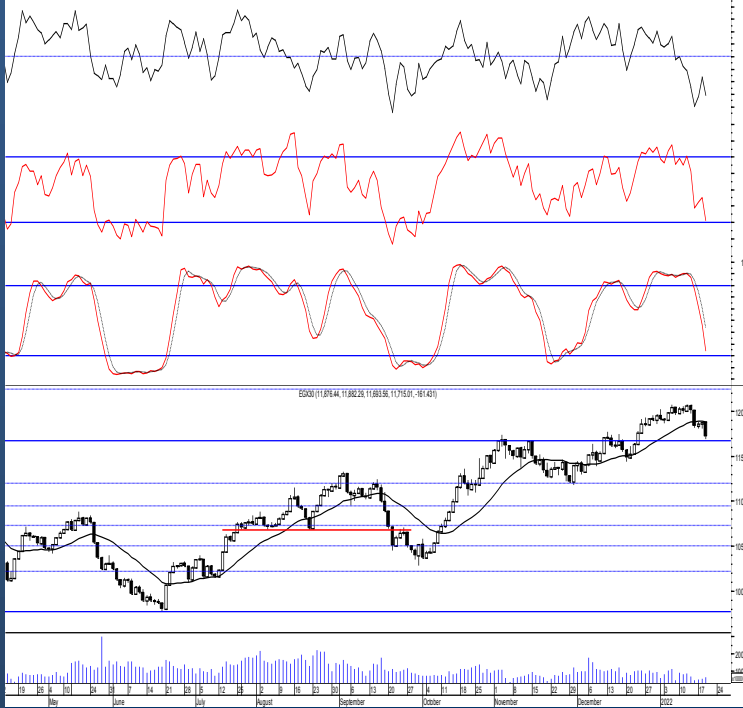
EGX 30 capped

مؤشر EGX 30 Capped
اليوم - 19/01/2022



Key Levels

Close		13944.26	
Support 1	13800	Resistance 1	14150
Support 2	13550	Resistance 2	14325



Market Commentary:

The EGX30 traded the same, an upward move ahead of the session before selling pressure dominates giving back all the gains. The index closed in green after the auction near the high but still needs confirmation for breaking 11900 so everything remains the same. Yet, the rally is still expected to resume to the second target level where we may use for short term trading. As we said, medium term targets now 12250 & 12850, while short term, targets will be 11900 & 12070. We recommend to be conservative and very selective keeping close stops placed and respected to reduce market risk. Notice that any retreating below 11675 will put the market under stress leading to further decline due to lack of confidence so stay alerted and disciplined.

Close	11876.44	Trend	Targets
Pre. Close	11876.44	Target 1	11900✓
Change	↓ 161.43 (1.36%)	Target 2	12070
Day's range	1188.9 — 11693.56	Stop-loss	11200
52week's high	12069.23	52week's low	9769.18

Disclaimer

- This publication has been prepared by Blom Egypt Securities for information purposes only.
- It is not intended as an offer to buy or sell or a solicitation of an offer to buy or sell the securities mentioned.
- The information & opinions in this publication were prepared by Blom Egypt Securities research department accepts no liability or legal responsibility for losses & damages incurred arising from the use of this publication or its contents.

Blom Egypt Securities
Samir M. Azmi, CFTe, CETA
Senior Technical Analyst
samir.azmi@blomsecurities.com

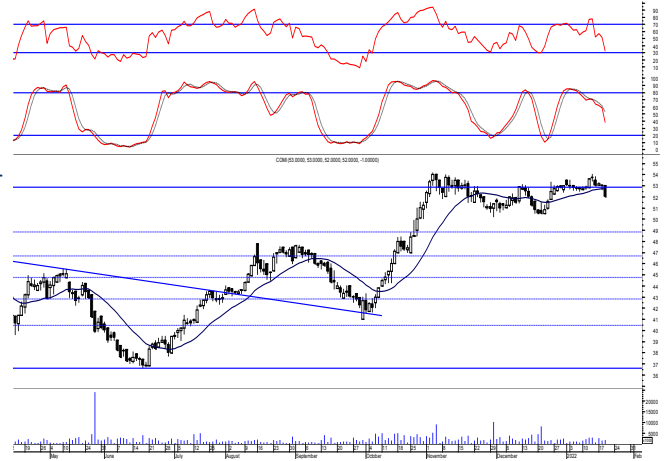


Commercial international bank (COMI.CA):

Prices closed deeply in red as selling pressure strongly dominated violating the important support level 52.80 turning it into resistance.

As we said by failing to defend the mentioned support, further stress will likely follow. Thus, reducing positions is recommended keeping the previous reached low 50.20 watched carefully. Bear in mind that the coming support is 51.60.

Support levels: 51.60, 50.20
Resistance levels: 52.80, 54.15



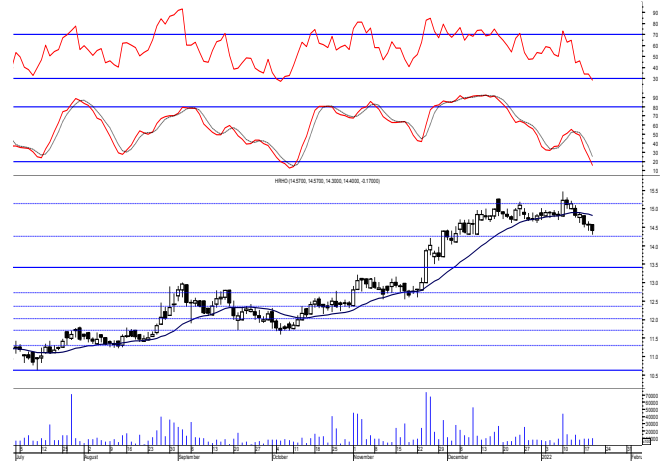
Hermes Holding (HRHO.CA):

Prices remained under stress failing to defend our protective stop 14.45 turning it into resistance.

Further decline is now expected to the minor support level 14.00 and may extend to 13.40.

We recommend to keep stops placed and respected and wait for new positions till a clear buy signal is clearly given.

Support levels: 14.00, 13.40
Resistance levels: 14.45, 15.25

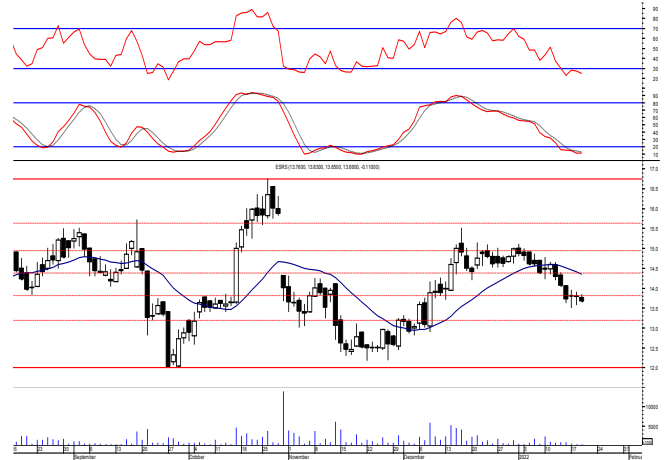


El-Ezz steel rebar's' (ESRS.CA):

Prices remained under stress closing below the support level 13.80 confirming the violation and therefore turning it into resistance. As we said, by failing to defend the mentioned support, further decline is now expected to the prominent support level 13.20.

Yet, it's recommended to stay on cash and wait for a confirmed buy signal to react safely on.

Support levels: 13.20, 12.00
Resistance levels: 13.80, 14.50



Disclaimer

- This publication has been prepared by Blom Egypt Securities for information purposes only.
- It is not intended as an offer to buy or sell or a solicitation of an offer to buy or sell the securities mentioned.
- The information & opinions in this publication were prepared by Blom Egypt Securities research department accepts no liability or legal responsibility for losses & damages incurred arising from the use of this publication or its contents.

Blom Egypt Securities
Samir M. Azmi, CFTe, CETA
Senior Technical Analyst
samir.azmi@blomsecurities.com



Most active Stocks

Daily Technical Analysis Report

20 Jan, 2022

Stock Name (Reuters' Code)	Close	Trend	T1	T2	Support	Resistance	SL	Triggers	
								Lower	Upper
Building Materials & Construction									
Arabian Cement (ARCC.CA)	4.15	Dn.-Corr.	—	—	4.10	4.40	3.60	—	—
GB Auto (AUTO.CA)	4.75	Dn.-Corr.	—	—	4.65	5.00	4.35	—	—
El Ezz Steel Rebar's (ESRS.CA)	13.66	Up-Corr.	—	—	13.20	13.80	13.20	—	—
Orascom Construction (ORAS.CA)	76.00	Dn.-Corr.	—	—	74.00	77.50	68.50	—	—
South Valley Cement (SVCE.CA)	1.47	Dn.-Corr.	—	—	1.36	1.48	1.36	—	—
Elswedey Cables (SWDY.CA)	9.35	Dn.-Corr.	—	—	9.00	9.40	8.60	—	—
Upper Egypt General Contracting (UEGC.CA)	0.666	Dn.-Corr.	—	—	0.639	0.69	0.639	—	—
Chemicals									
Abu-Qir Fertilizers (ABUK.CA)	21.38	Dn.-Corr.	—	—	20.90	21.70	17.90	—	—
Egyptian Financial & Indust. (EFIC.CA)	13.05	Up-Corr.	—	—	12.50	13.70	11.40	—	—
Egyptian Chemical Industries-Kima (EGCH.CA)	3.88	Up-Corr.	—	—	3.80	4.10	3.00	—	—
Communications									
Telecom Egypt (ETEL.CA)	16.93	Bullish	18.30	19.25	16.60	18.30	14.70	—	—
Fawry For Banking Tech. & Electronic Payment (FWRY.CA)	11.68	Bearish	—	—	10.90	11.80	—	—	—
Orascom Investment Holding (OIH.CA)	0.222	Up-Corr.	—	—	0.215	0.235	0.20	—	—
Financial Services									
Abu Dhabi International Bank (ADIB.CA)	15.35	Up-Corr.	—	—	14.90	15.50	12.60	—	—
Arabian For Investments & Development (AIH.CA)	0.374	Dn.-Corr.	—	—	0.35	0.37	0.35	—	—
Amer Holding Group (AMER.CA)	0.94	Up-Corr.	—	—	0.94	1.01	0.85	—	—
Credit Agricole (CIEB.CA)	8.00	Bullish	8.45√	9.15	7.80	8.45	6.80	—	—
Commercial International Bank (COMI.CA)	52.00	Dn.-Corr.	—	—	51.60	52.80	46.60	—	—
Export Development Bank Of Egypt (EXPA.CA)	9.40	Up-Corr.	—	—	9.15	9.70	8.60	—	—
Holding Companies									
B Investments Holdings (BINV.CA)	11.42	Up-Corr.	—	—	11.00	12.20	9.80	—	—
Citadel Capital (CCAP.CA)	1.207	Up-Corr.	—	—	1.17	1.24	1.09	—	—
Kuwaiti Holding (EKHO.CA)	1.398	Dn.-Corr.	—	—	1.342	1.405	1.22	—	—
Hermes Holding (HRHO.CA)	14.40	Bullish	14.25√	15.20√	14.00	14.45	11.25	—	—
MM Group For Industry & International Trade (MTIE.CA)	7.67	Bullish	7.60√	8.10	7.55	8.10	6.60	—	—
Orascom Financial Holding (OFH.CA)	0.225	Up-Corr.	—	—	0.208	0.23	0.208	—	—
Housing & Real Estate									
Egyptian For Tourism Resorts (EGTS.CA)	1.437	Up-Corr.	—	—	1.43	1.50	1.23	—	—
El-shams Housing (ELSH.CA)	8.40	Up-Corr.	—	—	7.80	8.40	7.40	—	—
Emaar Holding (EMFD.CA)	2.95	Bullish	3.00√	3.20	2.80	3.10	2.70	—	—
Heliopolis Housing & Development (HELI.CA)	6.45	Dn.-Corr.	—	—	5.75	6.50	—	—	—
Medinet Nasr For Housing & Deve. (MNHD.CA)	2.72	Up-Corr.	—	—	2.72	2.90	2.52	—	—
Palm Hills Development Co. (PHDC.CA)	1.801	Up-Corr.	—	—	1.72	1.84	1.72	—	—
Talaat Mustafa Group Holding (TMGH.CA)	9.06	Dn.-Corr.	—	—	8.90	9.50	7.60	—	—
Mining & Gas									
Alexandria Mineral Oils Co. (AMOC.CA)	4.01	Dn.-Corr.	—	—	3.77	4.05	3.33	—	—
Sidi Kerir Petrochemicals (SKPC.CA)	7.47	Up-Corr.	—	—	7.20	7.75	6.30	—	—
Textiles & Clothes									
Arab Co. For Asset Management & Deve. (ACAMD.CA)	0.485	Up-Corr.	—	—	0.475	0.505	0.42	—	—
Arab Cotton Ginning (ACGC.CA)	1.671	Up-Corr.	—	—	1.65	1.81	1.455	—	—
Oriental Weavers (ORWE.CA)	8.71	Dn.-Corr.	—	—	8.40	8.75	7.50	—	—
Other Sectors									
Egyptian Media Production City (MPRC.CA)	5.67	Up-Corr.	—	—	5.55	6.00	4.80	—	—
Orascom Holding Development (ORHD.CA)	5.55	Up-Corr.	—	—	5.35	5.60	5.15	—	—
Delta Sugar (SUGR.CA)	15.64	Up-Corr.	—	—	15.30	17.00	13.30	—	—
United Arab Shipping (UASG.CA)	0.974	Up-Corr.	—	—	0.96	1.04	0.80	—	—

Disclaimer

- This publication has been prepared by Blom Egypt Securities for information purposes only.
- It is not intended as an offer to buy or sell or a solicitation of an offer to buy or sell the securities mentioned.
- The information & opinions in this publication were prepared by Blom Egypt Securities research department accepts no liability or legal responsibility for losses & damages incurred arising from the use of this publication or its contents.

Blom Egypt Securities
Samir M. Azmi, CFTe, CETA
Senior Technical Analyst
samir.azmi@blomsecurities.com



Guidelines for using BLOM daily Technical Analysis Report

<u>Close:</u>	Is recorded as the last trade in the session.
<u>Trend:</u>	
Bullish :	The strategy is to buy the dips.
Bearish :	The strategy is to sell the rallies.
Flat :	The strategy is to trade the range between the triggers.
Up-Corr. :	A move against the major trend when it is down.
Dn.-Corr. :	A move against the major trend when it is up.
<u>Targets :</u>	Take some profit by reducing a portion of the position whenever a price target is been hit.
<u>Support :</u>	A level below market price (previous lows) where buyers showed strength, in a bull market buy near the support and don't sell on the resistance. A break below the Support is considered to be a bearish sign.
<u>Resistance :</u>	A level above market price (previous highs) where sellers showed strength, in a bear market sell near the resistance level and don't buy on the support. A break above the resistance is considered to be a bullish sign.
<u>Stop Loss :</u>	Must exit the current position whenever the closing price is (1% to 2%) below the stop loss and confirmed by volume.
<u>Triggers :</u>	The range between the lower trigger and the upper is used for trading, break of any of them, the move would continue in the same direction.
<u>Yellow rows:</u>	indication that the stock closed below/above support, stop-loss, or resistance but the break is not confirmed yet.

Disclaimer

- This publication has been prepared by Blom Egypt Securities for information purposes only.
- It is not intended as an offer to buy or sell or a solicitation of an offer to buy or sell the securities mentioned.
- The information & opinions in this publication were prepared by Blom Egypt Securities research department accepts no liability or legal responsibility for losses & damages incurred arising from the use of this publication or its contents.

Blom Egypt Securities
Samir M. Azmi, CFTe, CETA
Senior Technical Analyst
samir.azmi@blomsecurities.com