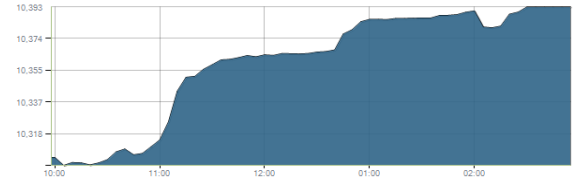




Indices intraday trends

EGX 30

مؤشر EGX 30
اليوم - 11/04/2021

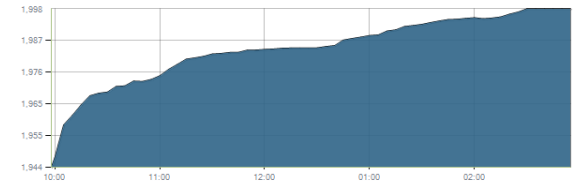


Key Levels

Support 1	10060	Resistance 1	10414
Support 2	9850	Resistance 2	10540

EGX 50 EWI

مؤشر EGX 50 EWI
اليوم - 11/04/2021

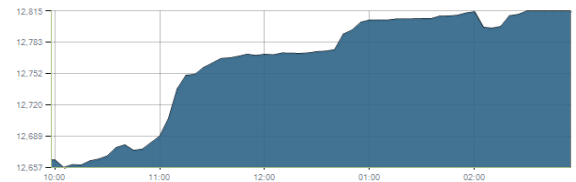


Key Levels

Close		1998.18	
Support 1	1990	Resistance 1	2050
Support 2	1890	Resistance 2	2160

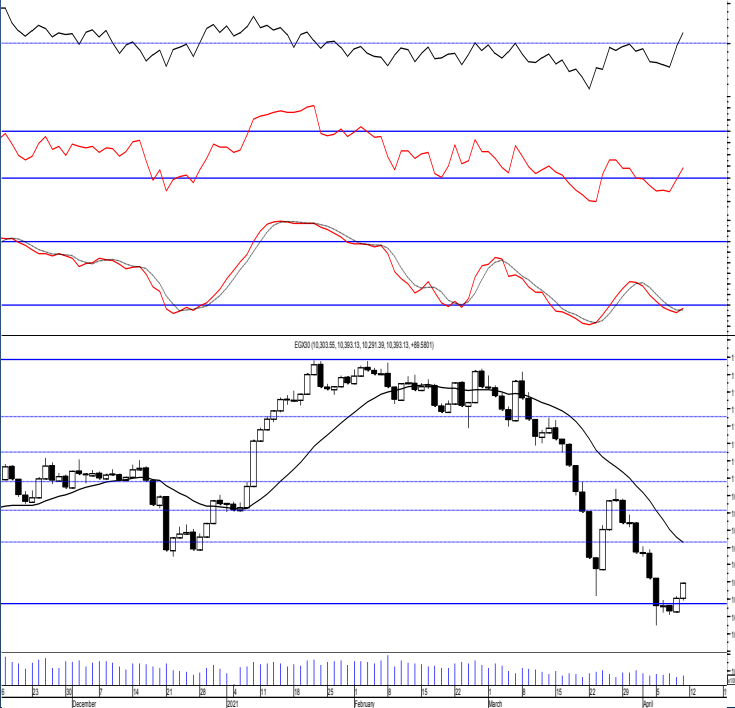
EGX 30 capped

مؤشر EGX 30 Capped
اليوم - 11/04/2021



Key Levels

Close		12814.57	
Support 1	12640	Resistance 1	12870
Support 2	12000	Resistance 2	13150



Market Commentary:

The EGX30 witnessed another upward move as most of the stocks continued climbing pushing the index higher and closing near the high suggesting further climbing. Trading volumes remained significantly weak indicating that the move is considered only an up correction. Medium term view as we said is negative and further decline is expected despite that rebounding attempt may still take place so market risk is highly elevated which will have further bearish implications. New opened short term trades and old positions are advised to activate any violated stop. New trades should wait for a confirmed buy signal to react safely on.

Close	10393.13	Trend	Bearish
Pre. Close	10303.55	Target 1	—
Change	↑ 89.58 (0.87%)	Target 2	—
Day's range	10291.39 — 10393.13	Stop-loss	—
52week's high	11675.69	52week's low	8113.82

Disclaimer

- This publication has been prepared by Blom Egypt Securities for information purposes only.
- It is not intended as an offer to buy or sell or a solicitation of an offer to buy or sell the securities mentioned.
- The information & opinions in this publication were prepared by Blom Egypt Securities research department accepts no liability or legal responsibility for losses & damages incurred arising from the use of this publication or its contents.

Blom Egypt Securities
Samir M. Azmi, CFTe, CETA
Senior Technical Analyst
samir.azmi@blomsecurities.com

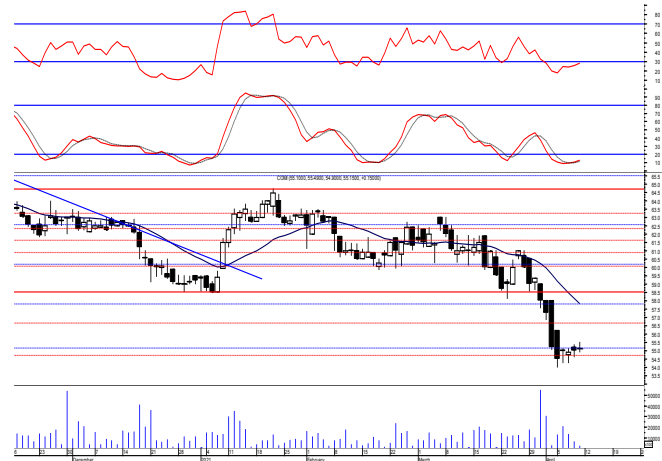


Commercial international bank (COMI.CA):

Prices remained narrowly flat closing slightly positive. Yet, bears overall still have the short and medium term technical advantage. So watching the support level 54.60 is highly recommended as breaking it will be followed by further decline to the 2nd major support level 50.00.

We recommend to stay on cash and wait for a confirmed buy signal to react safely on.

Support levels: 54.60, 50.00
Resistance levels: 56.70, 58.50



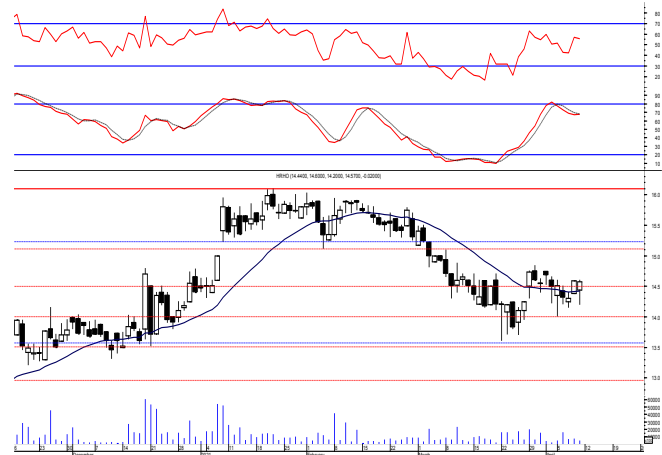
Hermes Holding (HRHO.CA):

Prices remained quietly flat as balanced trading performance dominated closing slightly negative keeping levels the same and so for our outlook

Testing the recent reached low 13.60 and the support level 13.50 is now expected where we should watch.

Close stops should always be placed and respected to protect the downside.

Support levels: 13.50, 12.90
Resistance levels: 14.60, 15.25-15.55

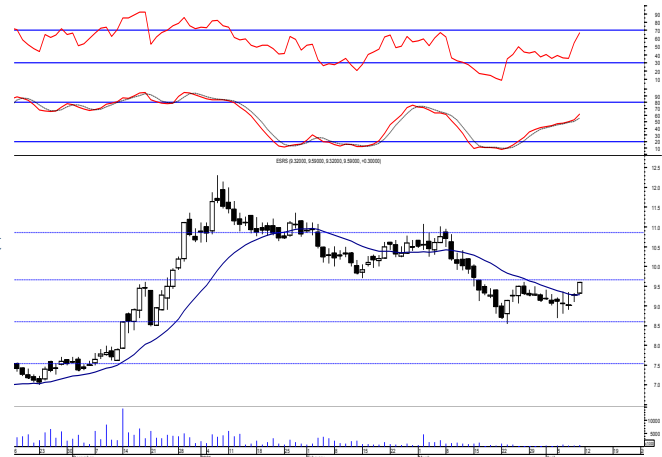


El-Ezz steel rebar's' (ESRS.CA):

Prices witnessed an upward move closing slightly positive near the high which will probably lead to reach the mentioned resistance level where we should watch.

Short term trades may be opened on current levels as further climbing will probably take place testing the resistance level 9.80 where we may use for quick trading bearing in mind that close stops should be placed and respected

Support levels: 8.50, 7.50
Resistance levels: 9.80, 10.60



Disclaimer

- This publication has been prepared by Blom Egypt Securities for information purposes only.
- It is not intended as an offer to buy or sell or a solicitation of an offer to buy or sell the securities mentioned.
- The information & opinions in this publication were prepared by Blom Egypt Securities research department accepts no liability or legal responsibility for losses & damages incurred arising from the use of this publication or its contents.

Blom Egypt Securities
Samir M. Azmi, CFTe, CETA
Senior Technical Analyst
samir.azmi@blomsecurities.com



Most active Stocks

Daily Technical Analysis Report

12 Apr, 2021

Stock Name (Reuters' Code)	Close	Trend	T1	T2	Support	Resistance	SL	Triggers	
								Lower	Upper
Building Materials & Construction									
Arabian cement (ARCC.CA)	3.65	Up-Corr.	—	—	3.45	3.76	3.10	—	—
El Ezz Steel Rebar's (ESRS.CA)	9.59	Bearish	—	—	8.50	9.80	—	—	—
GB auto (AUTO.CA)	3.82	Up-Corr.	—	—	3.64	4.00	3.45	—	—
Orascom construction (ORAS.CA)	88.00	Dn.-Corr.	—	—	88.00	93.00	81.00	—	—
South Valley Cement (SVCE.CA)	1.645	Bearish	—	—	1.445	1.64	—	—	—
Elsweddy Cables (SWDY.CA)	9.14	Up-Corr.	—	—	8.50	9.15	8.50	—	—
Upper Egypt general contracting (UEGC.CA)	0.74	Up-Corr.	—	—	0.725	0.82	0.67	—	—
Chemicals									
Abu-Qir fertilizers (ABUK.CA)	20.95	Dn.-Corr.	—	—	19.20	21.00	19.20	—	—
Egyptian Financial & Indust. (EFIC.CA)	11.00	Up-Corr.	—	—	10.50	11.40	9.60	—	—
Egyptian chemical industries-Kima (EGCH.CA)	3.30	Bearish	—	—	3.05	3.40	—	—	—
Communications									
Orascom investment holding (OIH.CA)	0.28	Dn.-Corr.	—	—	0.275	0.30	0.243	—	—
Telecom Egypt (ETEL.CA)	11.40	Up-Corr.	—	—	10.85	11.40	10.10	—	—
Financial Services									
Abu Dhabi International Bank (ADIB.CA)	10.50	Bearish	—	—	10.10	11.00	—	—	—
Arabian for investments & development (AIH.CA)	0.477	Up-Corr.	—	—	0.46	0.50	0.43	—	—
Amer holding group (AMER.CA)	0.768	Up-Corr.	—	—	0.72	0.78	0.72	—	—
Commercial International Bank (COMI.CA)	55.15	Bearish	—	—	54.60	56.70	—	—	—
Export development bank of Egypt (EXPA.CA)	12.29	Up-Corr.	—	—	11.80	12.80	11.20	—	—
Holding Companies									
Citadel capital (CCAP.CA)	1.20	Up-Corr.	—	—	1.12	1.22	1.12	—	—
Hermes Holding (HRHO.CA)	14.57	Bearish	—	—	13.50	14.60	—	—	—
Kuwaiti Holding (EKHO.CA)	1.104	Up-Corr.	—	—	1.11	1.17	1.04	—	—
MM group for industry & international trade (MTIE.CA)	9.44	Up-Corr.	—	—	9.30	10.20	8.70	—	—
Orascom financial holding (OFH.CA)	0.315	Up-Corr.	—	—	0.30	0.33	0.275	—	—
Pioneers holding (PIOH.CA)	4.08	Bearish	—	—	3.75	4.15	—	—	—
Housing & Real Estate									
Egyptian For Tourism Resorts (EGTS.CA)	1.384	Up-Corr.	—	—	0.35	1.425	1.25	—	—
Elshams housing (ELSH.CA)	4.22	Up-Corr.	—	—	4.15	4.37	4.00	—	—
Emaar holding (EMFD.CA)	2.36	Bearish	—	—	2.25	2.45	—	—	—
Heliopolis housing & development (HELL.CA)	4.79	Up-Corr.	—	—	4.75	5.00	4.30	—	—
Medinet Nasr for housing & Deve. (MNHD.CA)	3.81	Up-Corr.	—	—	3.75	3.90	3.50	—	—
6th. October Deve. Inv. (OCDI.CA)	16.00	Dn.-Corr.	—	—	14.80	16.00	13.90	—	—
Palm hills development Co. (PHDC.CA)	1.649	Dn.-Corr.	—	—	1.53	1.67	1.53	—	—
Talaat Mustafa group holding (TMGH.CA)	6.00	Bearish	—	—	5.50	6.00	—	—	—
Mining & Gas									
Alexandria Mineral Oils Co. (AMOC.CA)	2.56	Bearish	—	—	2.35	2.55	—	—	—
Sidi Kerir Petrochemicals (SKPC.CA)	10.10	Dn.-Corr.	—	—	9.80	10.60	9.80	—	—
Textiles & Clothes									
Arab Co. for asset management & Deve. (ACAMD.CA)	0.66	Up-Corr.	—	—	0.64	0.78	0.61	—	—
Arab cotton ginning (ACGC.CA)	1.73	Bearish	—	—	1.62	1.75	—	—	—
Oriental Weavers (ORWE.CA)	7.54	Up-Corr.	—	—	7.45	7.70	6.50	—	—
Other Sectors									
Egyptian Media Production City (MPRC.CA)	5.32	Up-Corr.	—	—	5.10	5.55	4.63	—	—
Egyptian Transport - Egytrans (ETRS.CA)	11.60	Up-Corr.	—	—	11.35	12.20	10.10	—	—
Orascom holding development (ORHD.CA)	5.35	Dn.-Corr.	—	—	5.30	5.65	4.70	—	—
United Arab Shipping (UASG.CA)	0.815	Up-Corr.	—	—	0.78	0.91	0.70	—	—

Disclaimer

- This publication has been prepared by Blom Egypt Securities for information purposes only.
- It is not intended as an offer to buy or sell or a solicitation of an offer to buy or sell the securities mentioned.
- The information & opinions in this publication were prepared by Blom Egypt Securities research department accepts no liability or legal responsibility for losses & damages incurred arising from the use of this publication or its contents.

Blom Egypt Securities
Samir M. Azmi, CFTe, CETA
Senior Technical Analyst
samir.azmi@blomsecurities.com



Guidelines for using BLOM daily Technical Analysis Report

<u>Close:</u>	Is recorded as the last trade in the session.
<u>Trend:</u>	
Bullish :	The strategy is to buy the dips.
Bearish :	The strategy is to sell the rallies.
Flat :	The strategy is to trade the range between the triggers.
Up-Corr. :	A move against the major trend when it is down.
Dn.-Corr. :	A move against the major trend when it is up.
<u>Targets :</u>	Take some profit by reducing a portion of the position whenever a price target is been hit.
<u>Support :</u>	A level below market price (previous lows) where buyers showed strength, in a bull market buy near the support and don't sell on the resistance. A break below the Support is considered to be a bearish sign.
<u>Resistance :</u>	A level above market price (previous highs) where sellers showed strength, in a bear market sell near the resistance level and don't buy on the support. A break above the resistance is considered to be a bullish sign.
<u>Stop Loss :</u>	Must exit the current position whenever the closing price is (1% to 2%) below the stop loss and confirmed by volume.
<u>Triggers :</u>	The range between the lower trigger and the upper is used for trading, break of any of them, the move would continue in the same direction.
<u>Yellow rows:</u>	indication that the stock closed below/above support, stop-loss, or resistance but the break is not confirmed yet.

Disclaimer

- This publication has been prepared by Blom Egypt Securities for information purposes only.
- It is not intended as an offer to buy or sell or a solicitation of an offer to buy or sell the securities mentioned.
- The information & opinions in this publication were prepared by Blom Egypt Securities research department accepts no liability or legal responsibility for losses & damages incurred arising from the use of this publication or its contents.

Blom Egypt Securities
Samir M. Azmi, CFTe, CETA
Senior Technical Analyst
samir.azmi@blomsecurities.com