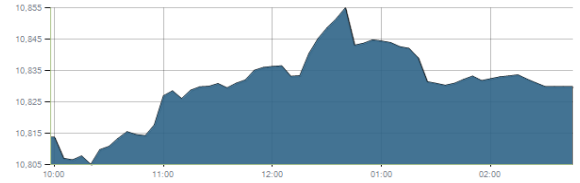




Indices intraday trends

EGX 30

مؤشر EGX 30
اليوم - 05/01/2021

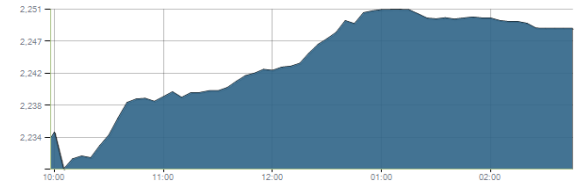


Key Levels

Support 1	10750	Resistance 1	10900-11100
Support 2	10550	Resistance 2	11230

EGX 50 EWI

مؤشر EGX 50 EWI
اليوم - 05/01/2021



Key Levels

Close		2248.29	
Support 1	2200	Resistance 1	2300
Support 2	2130	Resistance 2	2430

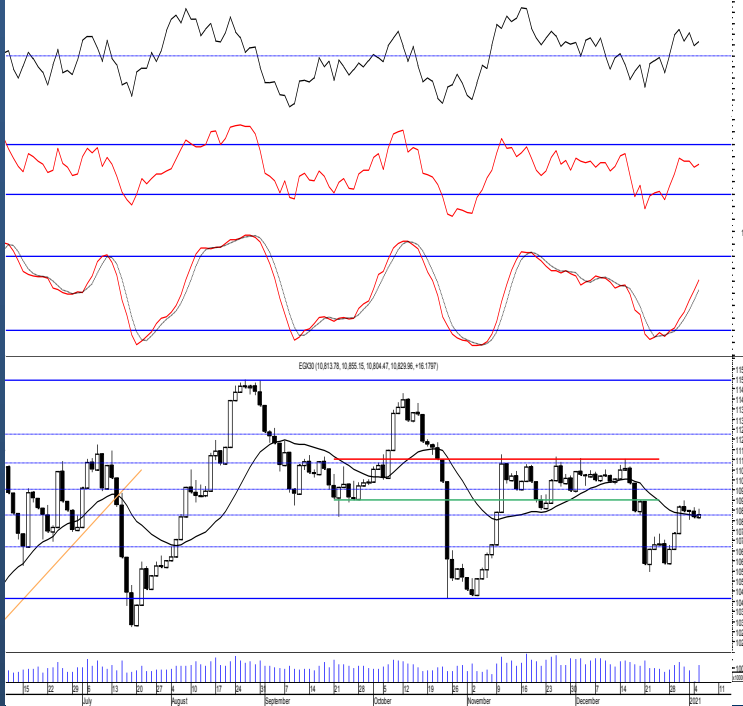
EGX 30 capped

مؤشر EGX 30 Capped
اليوم - 05/01/2021



Key Levels

Close		13258.73	
Support 1	13170	Resistance 1	13460
Support 2	13035	Resistance 2	13850



Market Commentary:

The EGX30 remained narrowly flat closing slightly positive after mixed performance in most of the stocks leaving everything in place.

Yet, further climbing is still expected to reach the major resistance zone 10900-11100 where we should watch. Short term trades may conservatively be opened above the mentioned level. Any pullback from current levels will trigger our sell signal and to buy near the supports. We overall recommend conservative traders to stay on cash till a confirmed buy signal is evident. Risk takers who decides holding their positions are advised to keep close stops placed and respected.

Close	10829.96	Trend	Up-Corr.
Pre. Close	10813.78	Target 1	—
Change	↑ 16.18 (0.15%)	Target 2	—
Day's range	10804.47 — 10855.15	Stop-loss	10425
52week's high	14831.20	52week's low	8113.82

Disclaimer

- This publication has been prepared by Blom Egypt Securities for information purposes only.
- It is not intended as an offer to buy or sell or a solicitation of an offer to buy or sell the securities mentioned.
- The information & opinions in this publication were prepared by Blom Egypt Securities research department accepts no liability or legal responsibility for losses & damages incurred arising from the use of this publication or its contents.

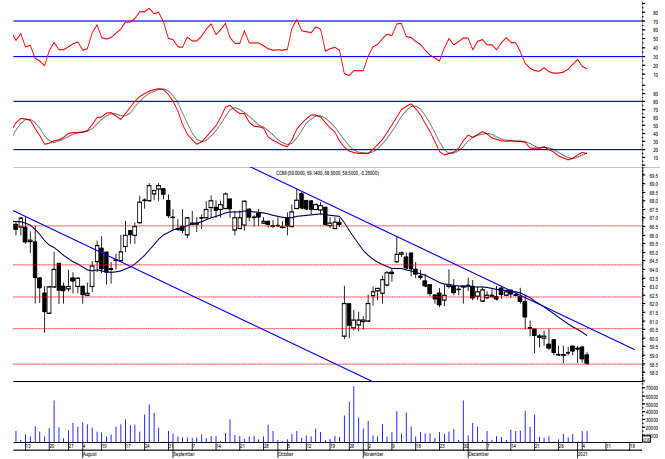
Blom Egypt Securities
Samir M. Azmi, CFTe, CETA
Senior Technical Analyst
samir.azmi@blomsecurities.com



Commercial international bank (COMI.CA):

Prices witnessed another slight downward move closing on the support level 58.50. Watching the mentioned support is highly recommended. We still recommend traded positions to stay on cash and wait for a confirmed buy signal to react safely on. While held positions are advised to activate their stops and stay on cash.

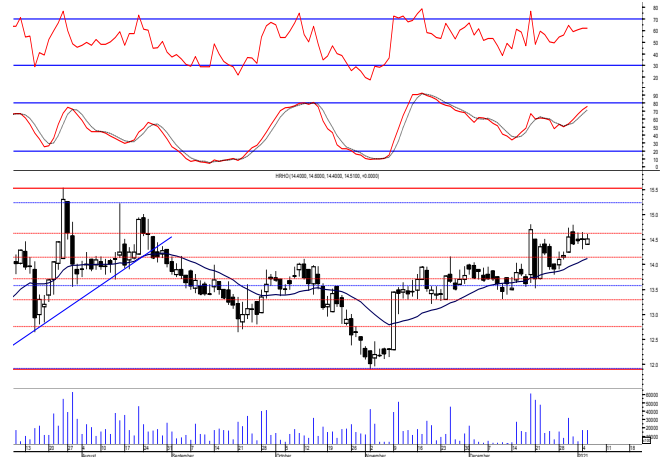
Support levels: 58.50, 56.20
Resistance levels: 60.00, 63.00



Hermes Holding (HRHO.CA):

Prices remained quietly flat closing with no change keeping everything in place. Yet, the upward move is still expected targeting the mentioned resistance zone. Close stops should always be placed and respected to protect the downside.

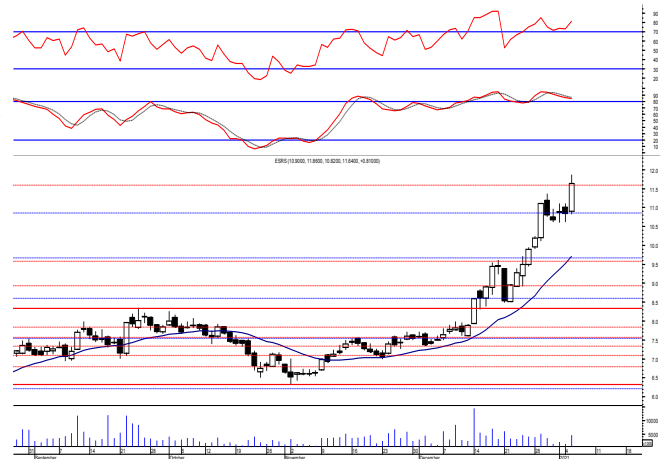
Support levels: 14.10, 13.50
Resistance levels: 15.25-15.55, 16.60-17.10



El-Ezz steel rebar's' (ESRS.CA):

Prices managed to break the resistance level 10.90 turning it into support which as we said proves real buying strength. New targets now are set at 11.60 & 12.45 where we may use to trade gradually on. Trailing stop should always be used to protect profits.

Support levels: 10.90, 9.80
Resistance levels: 11.60, 12.45



Disclaimer

- This publication has been prepared by Blom Egypt Securities for information purposes only.
- It is not intended as an offer to buy or sell or a solicitation of an offer to buy or sell the securities mentioned.
- The information & opinions in this publication were prepared by Blom Egypt Securities research department accepts no liability or legal responsibility for losses & damages incurred arising from the use of this publication or its contents.

Blom Egypt Securities
Samir M. Azmi, CFTe, CETA
Senior Technical Analyst
samir.azmi@blomsecurities.com



Most active Stocks

Daily Technical Analysis Report

6 Jan, 2021

Stock Name (Reuters' Code)	Close	Trend	T1	T2	Support	Resistance	SL	Triggers	
								Lower	Upper
Building Materials & Construction									
Arabian cement (ARCC.CA)	3.16	Up-Corr.	—	—	3.05	3.17	2.75	—	—
El Ezz Steel Rebar's (ESRS.CA)	11.64	Bullish	11.60	12.45	11.60	12.45	10.60	—	—
Egyptian iron & steel; Co. (IRON.CA)	3.46	Dn.-Corr.	—	—	3.50	3.70	2.80	—	—
GB auto (AUTO.CA)	3.63	Bullish	3.60√	3.80	3.60	3.80	2.95	—	—
Orascom construction (ORAS.CA)	52.60	Flat	—	—	—	—	78.00	81.00	86.00
South Valley Cement (SVCE.CA)	1.675	Up-Corr.	—	—	1.67	1.75	1.58	—	—
Elsweddy Cables (SWDY.CA)	10.09	Bullish	9.60√	9.90√	9.25	10.20	8.50	—	—
Upper Egypt general contracting (UEGC.CA)	0.82	Up-Corr.	—	—	0.815	0.855	0.74	—	—
Chemicals									
Abu-Qir fertilizers (ABUK.CA)	20.40	Dn.-Corr.	—	—	20.50	21.60	19.20	—	—
Egyptian Financial & Indust. (EFIC.CA)	11.79	Up-Corr.	—	—	11.10	11.90	11.10	—	—
Egyptian chemical industries-Kima (EGCH.CA)	4.07	Up-Corr.	—	—	3.90	4.25	3.80	—	—
Communications									
Orascom investment holding (OIH.CA)	0.544	Up-Corr.	—	—	0.49	0.555	0.49	—	—
Telecom Egypt (EDEL.CA)	11.62	Up-Corr.	—	—	11.40	12.00	11.40	—	—
Financial Services									
Abu Dhabi International Bank (ADIB.CA)	11.70	Dn.-Corr.	—	—	11.20	12.00	11.20	—	—
Arabian for investments & development (AIH.CA)	0.659	Dn.-Corr.	—	—	0.645	0.68	0.59	—	—
Amer holding group (AMER.CA)	1.15	Bullish	1.25	1.40	1.14	1.25	0.98	—	—
Commercial International Bank (COMI.CA)	58.50	Bearish	—	—	58.50	60.00	—	—	—
Export development bank of Egypt (EXPA.CA)	13.98	Up-Corr.	—	—	13.80	14.60	13.80	—	—
Holding Companies									
CI capital holding for financial investments (CICH.CA)	3.95	Up-Corr.	—	—	3.75	4.00	3.55	—	—
Citadel capital (CCAP.CA)	1.515	Up-Corr.	—	—	1.45	1.545	1.39	—	—
Hermes Holding (HRHO.CA)	14.51	Up-Corr.	—	—	14.10	15.55	13.20	—	—
Kuwaiti Holding (EKHO.CA)	0.951	Bearish	—	—	0.91	0.97	—	—	—
Pioneers holding (PIOH.CA)	4.07	Up-Corr.	—	—	3.85	4.15	3.60	—	—
Housing & Real Estate									
Egyptian For Tourism Resorts (EGTS.CA)	1.423	Up-Corr.	—	—	1.40	1.52	1.30	—	—
Elshams housing (ELSH.CA)	4.63	Up-Corr.	—	—	4.60	4.75	4.15	—	—
Emaar holding (EMFD.CA)	2.34	Dn.-Corr.	—	—	2.30	2.40	2.13	—	—
Heliopolis housing & development (HELLI.CA)	6.10	Up-Corr.	—	—	5.90	6.20	5.50	—	—
Medinet Nasr for housing & Deve. (MNHD.CA)	3.93	Up-Corr.	—	—	3.80	3.97	3.45	—	—
6th. October Deve. Inv. (OCDI.CA)	15.10	Flat	—	—	—	—	13.90	14.50	15.50
Palm hills development Co. (PHDC.CA)	1.381	Up-Corr.	—	—	1.33	1.405	1.28	—	—
Talaat Mustafa group holding (TMGH.CA)	6.55	Up-Corr.	—	—	6.30	6.55	6.30	—	—
Mining & Gas									
Alexandria Mineral Oils Co. (AMOC.CA)	3.15	Dn.-Corr.	—	—	3.13	3.35	2.75	—	—
Sidi Kerir Petrochemicals (SKPC.CA)	9.78	Bullish	9.85√	10.60	9.25	9.85	8.15	—	—
Textiles & Clothes									
Arab Co. for asset management & Deve. (ACAMD.CA)	5.60	Up-Corr.	—	—	5.55	5.90	4.65	—	—
Arab cotton ginning (ACGC.CA)	3.27	Up-Corr.	—	—	3.20	3.45	2.85	—	—
Oriental Weavers (ORWE.CA)	6.82	Bearish	—	—	6.50	7.00	—	—	—
Other Sectors									
Egyptian Media Production City (MPRC.CA)	6.81	Up-Corr.	—	—	6.65	7.05	5.40	—	—
Egyptian Transport - Egytrans (ETRS.CA)	11.00	Up-Corr.	—	—	10.10	11.00	9.10	—	—
Orascom holding development (ORHD.CA)	4.71	Dn.-Corr.	—	—	4.45	4.85	4.45	—	—
United Arab Shipping (UASG.CA)	1.112	Up-Corr.	—	—	1.08	1.17	0.90	—	—

Disclaimer

- This publication has been prepared by Blom Egypt Securities for information purposes only.
- It is not intended as an offer to buy or sell or a solicitation of an offer to buy or sell the securities mentioned.
- The information & opinions in this publication were prepared by Blom Egypt Securities research department accepts no liability or legal responsibility for losses & damages incurred arising from the use of this publication or its contents.

Blom Egypt Securities
Samir M. Azmi, CFTe, CETA
Senior Technical Analyst
samir.azmi@blomsecurities.com



Guidelines for using BLOM daily Technical Analysis Report

<u>Close:</u>	Is recorded as the last trade in the session.
<u>Trend:</u>	
Bullish :	The strategy is to buy the dips.
Bearish :	The strategy is to sell the rallies.
Flat :	The strategy is to trade the range between the triggers.
Up-Corr. :	A move against the major trend when it is down.
Dn.-Corr. :	A move against the major trend when it is up.
<u>Targets :</u>	Take some profit by reducing a portion of the position whenever a price target is been hit.
<u>Support :</u>	A level below market price (previous lows) where buyers showed strength, in a bull market buy near the support and don't sell on the resistance. A break below the Support is considered to be a bearish sign.
<u>Resistance :</u>	A level above market price (previous highs) where sellers showed strength, in a bear market sell near the resistance level and don't buy on the support. A break above the resistance is considered to be a bullish sign.
<u>Stop Loss :</u>	Must exit the current position whenever the closing price is (1% to 2%) below the stop loss and confirmed by volume.
<u>Triggers :</u>	The range between the lower trigger and the upper is used for trading, break of any of them, the move would continue in the same direction.
<u>Yellow rows:</u>	indication that the stock closed below/above support, stop-loss, or resistance but the break is not confirmed yet.

Disclaimer

- This publication has been prepared by Blom Egypt Securities for information purposes only.
- It is not intended as an offer to buy or sell or a solicitation of an offer to buy or sell the securities mentioned.
- The information & opinions in this publication were prepared by Blom Egypt Securities research department accepts no liability or legal responsibility for losses & damages incurred arising from the use of this publication or its contents.

Blom Egypt Securities
Samir M. Azmi, CFTe, CETA
Senior Technical Analyst
samir.azmi@blomsecurities.com