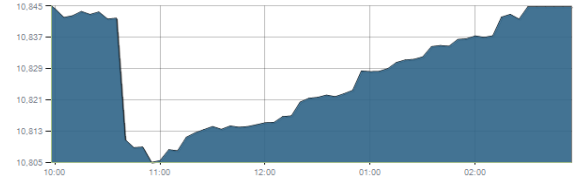




Indices intraday trends

EGX 30

مؤشر EGX 30  
اليوم - 03/01/2021

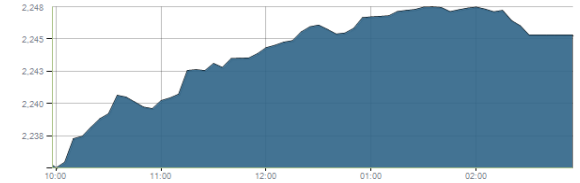


Key Levels

Support 1	10550	Resistance 1	10750
Support 2	10270	Resistance 2	10900-11100

EGX 50 EWI

مؤشر EGX 50 EWI  
اليوم - 03/01/2021

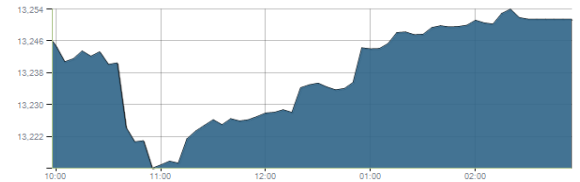


Key Levels

Close		2245.76	
Support 1	2200	Resistance 1	2300
Support 2	2130	Resistance 2	2430

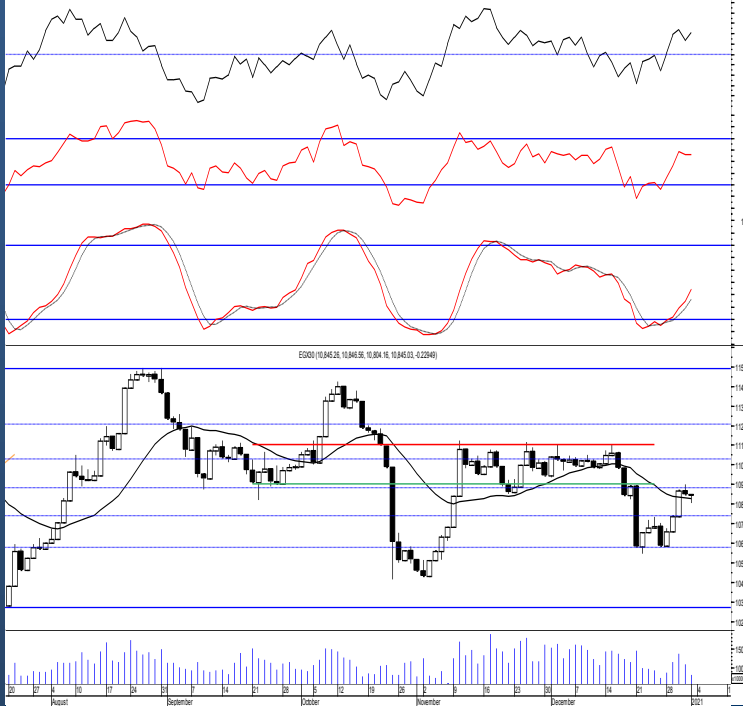
EGX 30 capped

مؤشر EGX 30 Capped  
اليوم - 03/01/2021



Key Levels

Close		13251.45	
Support 1	13170	Resistance 1	13460
Support 2	13035	Resistance 2	13850



Market Commentary:

The EGX30 remained narrowly flat closing slightly negative as balanced trading dominated leaving everything in place. Increasing trading volumes still suggests further climbing which will likely reach the major resistance zone 10900-11100. Short term trades may conservatively be opened above the mentioned level. On the other hand any broken stop should be respected and wait for a confirmed positive signal. We overall recommend to stay on cash till a confirmed buy signal is evident. Risk takers who decides holding their positons are advised to keep close stops placed and respected.

Close	10845.03	Trend	Up-Corr.
Pre. Close	10845.26	Target 1	—
Change	↓ 0.23 ( 0.00% )	Target 2	—
Day's range	10846.56 — 10804.16	Stop-loss	10425
52week's high	14831.20	52week's low	8113.82

Disclaimer

- This publication has been prepared by Blom Egypt Securities for information purposes only.
- It is not intended as an offer to buy or sell or a solicitation of an offer to buy or sell the securities mentioned.
- The information & opinions in this publication were prepared by Blom Egypt Securities research department accepts no liability or legal responsibility for losses & damages incurred arising from the use of this publication or its contents.

**Blom Egypt Securities**  
Samir M. Azmi, CFTe, CETA  
Senior Technical Analyst  
samir.azmi@blomsecurities.com



**Commercial international bank (COMI.CA):**

Prices remained narrowly flat as quiet trading performance overwhelmed leaving everything in place. Watching the mentioned support is highly recommended.

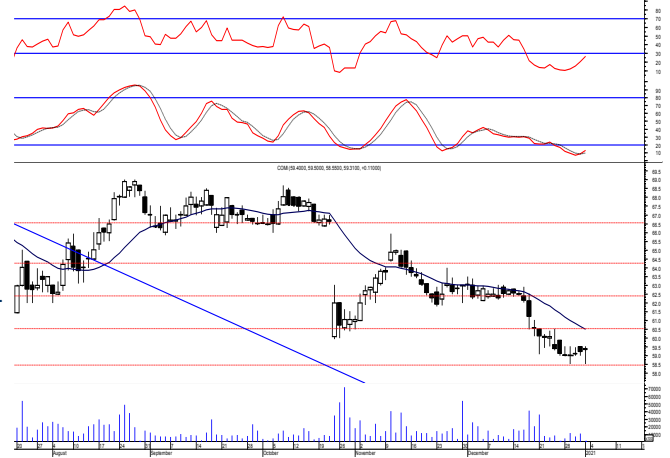
We still recommend traded positions to stay on cash and wait for a confirmed buy signal to react safely on.

While held positions are advised to activate their stops and stay on cash.

Notice that testing the resistance level is expected but increasing trading volume is needed to successfully break.

Support levels: 58.50, 56.20

Resistance levels: 60.00, 63.00



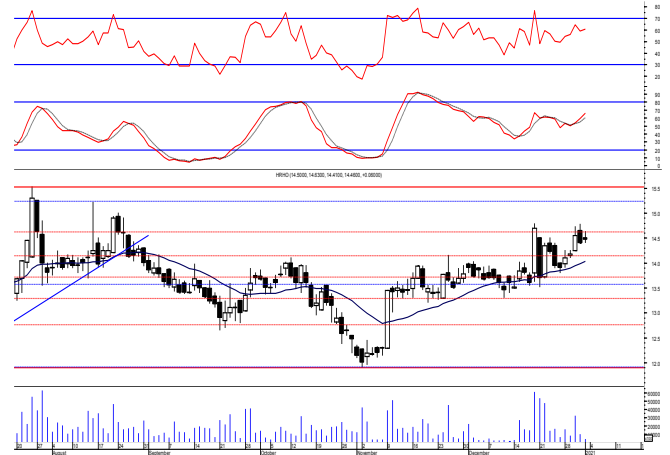
**Hermes Holding (HRHO.CA):**

Prices remained quietly flat closing slightly positive keeping everything in place. Yet, the upward move is still expected targeting the mentioned resistance zone.

Close stops should always be placed and respected to protect the downside.

Support levels: 14.10, 13.50

Resistance levels: 15.25-15.55, 16.60-17.10



**El-Ezz steel rebar's' (ESRS.CA):**

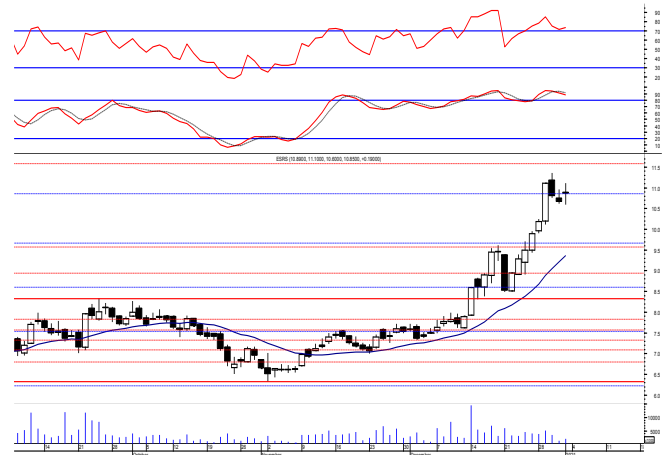
Prices closed flat slightly positive after the early attempt to break the resistance level 10.90 leaving everything in place.

As we said, buying strength will only be proven by breaking the mentioned level where we may reopen new positions safely above. Notice that targets then will be 11.60 & 12.45

Trailing stop should always be used to protect profits.

Support levels: 9.80, 9.10

Resistance levels: 10.90, 11.60



**Disclaimer**

- This publication has been prepared by Blom Egypt Securities for information purposes only.
- It is not intended as an offer to buy or sell or a solicitation of an offer to buy or sell the securities mentioned.
- The information & opinions in this publication were prepared by Blom Egypt Securities research department accepts no liability or legal responsibility for losses & damages incurred arising from the use of this publication or its contents.

**Blom Egypt Securities**  
Samir M. Azmi, CFTe, CETA  
Senior Technical Analyst  
samir.azmi@blomsecurities.com



Most active Stocks

Daily Technical Analysis Report

4 Jan, 2021

Stock Name (Reuters' Code)	Close	Trend	T1	T2	Support	Resistance	SL	Triggers	
								Lower	Upper
<b>Building Materials &amp; Construction</b>									
Arabian cement (ARCC.CA)	3.18	Up-Corr.	—	—	3.05	3.17	2.75	—	—
El Ezz Steel Rebar's (ESRS.CA)	10.85	Bullish	10.90√	11.60	9.80	10.90	7.55	—	—
Egyptian iron & steel; Co. (IRON.CA)	3.58	Dn.-Corr.	—	—	3.50	3.70	2.80	—	—
GB auto (AUTO.CA)	3.55	Bullish	3.60√	3.80	3.30	3.60	2.95	—	—
Orascom construction (ORAS.CA)	82.50	Flat	—	—	—	—	78.00	81.00	86.00
South Valley Cement (SVCE.CA)	1.687	Up-Corr.	—	—	1.67	1.75	1.58	—	—
Elswedey Cables (SWDY.CA)	9.76	Bullish	9.60√	9.90√	9.25	10.20	8.50	—	—
Upper Egypt general contracting (UEGC.CA)	0.857	Up-Corr.	—	—	0.815	0.855	0.74	—	—
<b>Chemicals</b>									
Abu-Qir fertilizers (ABUK.CA)	20.65	Dn.-Corr.	—	—	20.50	21.60	19.20	—	—
Egyptian Financial & Indust. (EFIC.CA)	12.20	Up-Corr.	—	—	11.85	12.80	11.10	—	—
Egyptian chemical industries-Kima (EGCH.CA)	4.09	Up-Corr.	—	—	3.90	4.25	3.80	—	—
<b>Communications</b>									
Orascom investment holding (OIH.CA)	0.551	Up-Corr.	—	—	0.49	0.555	0.49	—	—
Telecom Egypt (EDEL.CA)	11.80	Up-Corr.	—	—	11.40	12.00	11.40	—	—
<b>Financial Services</b>									
Abu Dhabi International Bank (ADIB.CA)	11.90	Dn.-Corr.	—	—	11.20	12.00	11.20	—	—
Arabian for investments & development (AIH.CA)	0.641	Dn.-Corr.	—	—	0.645	0.68	0.59	—	—
Amer holding group (AMER.CA)	1.157	Bullish	1.25	1.40	1.14	1.25	0.98	—	—
Commercial International Bank (COMI.CA)	59.31	Bearish	—	—	58.50	60.00	—	—	—
Export development bank of Egypt (EXPA.CA)	13.88	Up-Corr.	—	—	13.80	14.60	13.80	—	—
<b>Holding Companies</b>									
CI capital holding for financial investments (CICH.CA)	3.90	Up-Corr.	—	—	3.75	4.00	3.55	—	—
Citadel capital (CCAP.CA)	1.432	Up-Corr.	—	—	1.39	1.45	1.39	—	—
Hermes Holding (HRHO.CA)	14.46	Up-Corr.	—	—	14.10	15.55	13.20	—	—
Kuwaiti Holding (EKHO.CA)	1.012	Up-Corr.	—	—	0.97	1.04	0.97	—	—
Pioneers holding (PIOH.CA)	4.13	Up-Corr.	—	—	3.85	4.15	3.60	—	—
<b>Housing &amp; Real Estate</b>									
Egyptian For Tourism Resorts (EGTS.CA)	1.434	Up-Corr.	—	—	1.40	1.52	1.30	—	—
Elshams housing (ELSH.CA)	4.77	Up-Corr.	—	—	4.70	4.90	4.15	—	—
Emaar holding (EMFD.CA)	2.39	Dn.-Corr.	—	—	2.30	2.40	2.13	—	—
Heliopolis housing & development (HELLI.CA)	6.11	Up-Corr.	—	—	5.90	6.20	5.50	—	—
Medinet Nasr for housing & Deve. (MNHD.CA)	3.85	Up-Corr.	—	—	3.60	3.90	3.45	—	—
6th. October Deve. Inv. (OCDI.CA)	14.80	Bullish	15.75	16.90	14.80	15.75	13.90	—	—
Palm hills development Co. (PHDC.CA)	1.40	Up-Corr.	—	—	1.33	1.405	1.28	—	—
Talaat Mustafa group holding (TMGH.CA)	6.52	Up-Corr.	—	—	6.50	6.70	6.30	—	—
<b>Mining &amp; Gas</b>									
Alexandria Mineral Oils Co. (AMOC.CA)	3.13	Dn.-Corr.	—	—	3.13	3.35	2.75	—	—
Sidi Kerir Petrochemicals (SKPC.CA)	9.35	Bullish	9.85	10.60	9.25	9.85	8.15	—	—
<b>Textiles &amp; Clothes</b>									
Arab Co. for asset management & Deve. (ACAMD.CA)	5.31	Up-Corr.	—	—	5.25	5.57	4.65	—	—
Arab cotton ginning (ACGC.CA)	3.28	Up-Corr.	—	—	3.20	3.45	2.85	—	—
Oriental Weavers (ORWE.CA)	6.77	Bearish	—	—	6.50	7.00	—	—	—
<b>Other Sectors</b>									
Egyptian Media Production City (MPRC.CA)	6.95	Up-Corr.	—	—	7.00	7.55	5.40	—	—
Egyptian Transport - Egytrans (ETRS.CA)	10.90	Up-Corr.	—	—	10.10	11.00	9.10	—	—
Orascom holding development (ORHD.CA)	4.86	Dn.-Corr.	—	—	4.45	4.85	4.45	—	—
United Arab Shipping (UASG.CA)	1.119	Up-Corr.	—	—	1.08	1.17	0.90	—	—

Disclaimer

- This publication has been prepared by Blom Egypt Securities for information purposes only.
- It is not intended as an offer to buy or sell or a solicitation of an offer to buy or sell the securities mentioned.
- The information & opinions in this publication were prepared by Blom Egypt Securities research department accepts no liability or legal responsibility for losses & damages incurred arising from the use of this publication or its contents.

**Blom Egypt Securities**  
Samir M. Azmi, CFTe, CETA  
Senior Technical Analyst  
samir.azmi@blomsecurities.com



**Guidelines for using BLOM daily Technical Analysis Report**

<b><u>Close:</u></b>	Is recorded as the last trade in the session.
<b><u>Trend:</u></b>	
<b>Bullish :</b>	The strategy is to buy the dips.
<b>Bearish :</b>	The strategy is to sell the rallies.
<b>Flat :</b>	The strategy is to trade the range between the triggers.
<b>Up-Corr. :</b>	A move against the major trend when it is down.
<b>Dn.-Corr. :</b>	A move against the major trend when it is up.
<b><u>Targets :</u></b>	Take some profit by reducing a portion of the position whenever a price target is been hit.
<b><u>Support :</u></b>	A level below market price (previous lows) where buyers showed strength, in a bull market buy near the support and don't sell on the resistance. A break below the Support is considered to be a bearish sign.
<b><u>Resistance :</u></b>	A level above market price (previous highs) where sellers showed strength, in a bear market sell near the resistance level and don't buy on the support. A break above the resistance is considered to be a bullish sign.
<b><u>Stop Loss :</u></b>	Must exit the current position whenever the closing price is (1% to 2%) below the stop loss and confirmed by volume.
<b><u>Triggers :</u></b>	The range between the lower trigger and the upper is used for trading, break of any of them, the move would continue in the same direction.
<b><u>Yellow rows:</u></b>	indication that the stock closed below/above support, stop-loss, or resistance but the break is not confirmed yet.

**Disclaimer**

- This publication has been prepared by Blom Egypt Securities for information purposes only.
- It is not intended as an offer to buy or sell or a solicitation of an offer to buy or sell the securities mentioned.
- The information & opinions in this publication were prepared by Blom Egypt Securities research department accepts no liability or legal responsibility for losses & damages incurred arising from the use of this publication or its contents.

**Blom Egypt Securities**  
**Samir M. Azmi, CFTe, CETA**  
**Senior Technical Analyst**  
**samir.azmi@blomsecurities.com**