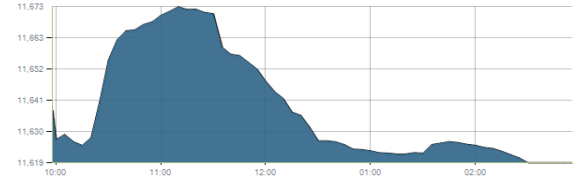




Indices intraday trends

EGX 30

مؤشر EGX 30  
اليوم - 03/02/2021

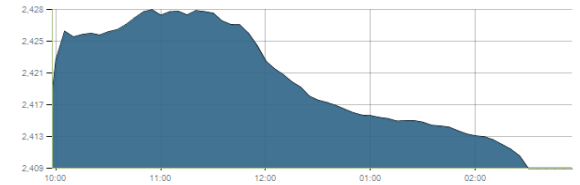


Key Levels

Support 1	11500-11450	Resistance 1	11850
Support 2	11230	Resistance 2	12200

EGX 50 EWI

مؤشر EGX 50 EWI  
اليوم - 03/02/2021

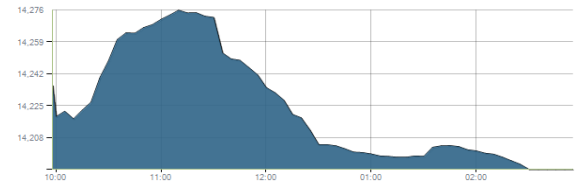


Key Levels

Close		2409.09	
Support 1	2360	Resistance 1	2430
Support 2	2300	Resistance 2	2600

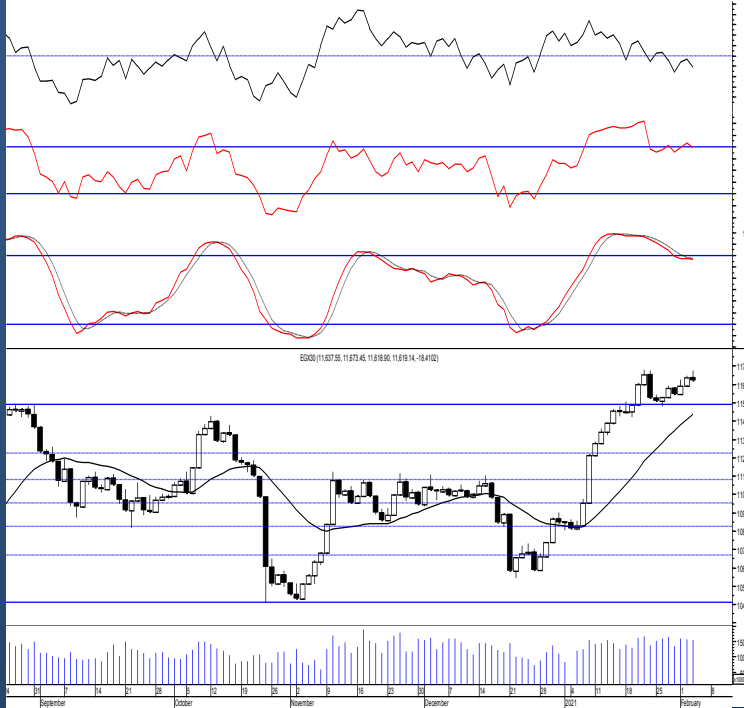
EGX 30 capped

مؤشر EGX 30 Capped  
اليوم - 03/02/2021



Key Levels

Close		14190.43	
Support 1	14200	Resistance 1	14750
Support 2	13850	Resistance 2	15400



Market Commentary:

The EGX30 inched higher ahead of trading before selling pressure takes place pulling the index back closing slightly negative keeping everything in place. Yet, the decline is considered only a correction to the previous rally where we believe we can buy gradually on bearing in mind that the mentioned support zone should be respected. As we said, by clearing the mentioned zone the medium term trend now is up setting new target levels at 11850 & 12200. New positions now may safely be opened while existing positions are advised to use trailing stop strategy and may add to their positions using the mentioned target levels to trade gradually on.

Close	11619.14	Trend	Bullish
Pre. Close	11637.55	Target 1	11450 ✓
Change	↓ 18.41 ( 0.16% )	Target 2	11850
Day's range	11673.45 — 11618.90	Stop-loss	10425
52week's high	14831.20	52week's low	8113.82

Disclaimer

- This publication has been prepared by Blom Egypt Securities for information purposes only.
- It is not intended as an offer to buy or sell or a solicitation of an offer to buy or sell the securities mentioned.
- The information & opinions in this publication were prepared by Blom Egypt Securities research department accepts no liability or legal responsibility for losses & damages incurred arising from the use of this publication or its contents.

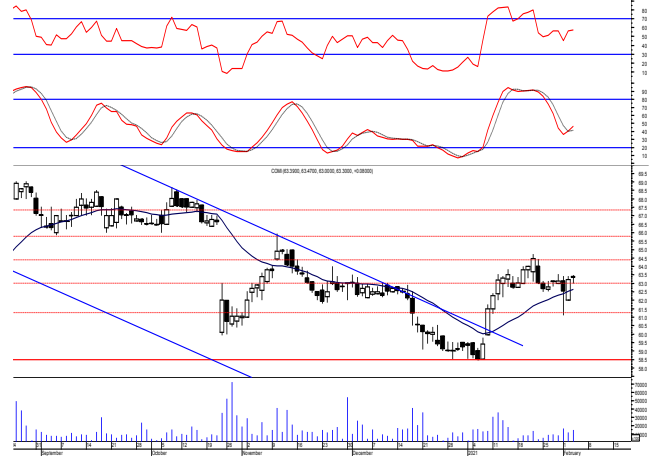
**Blom Egypt Securities**  
Samir M. Azmi, CFTe, CETA  
Senior Technical Analyst  
samir.azmi@blomsecurities.com



**Commercial international bank (COMI.CA):**

Prices remained fluctuating around the support level 63.00 before managing to close above with a slight positive move keeping levels unchanged and so for our outlook. Yet our view is still positive as technical indicators remained bullish suggesting that the next target and resistance will be reached where we may continue trading on. Protective stop should be placed below 60.00.

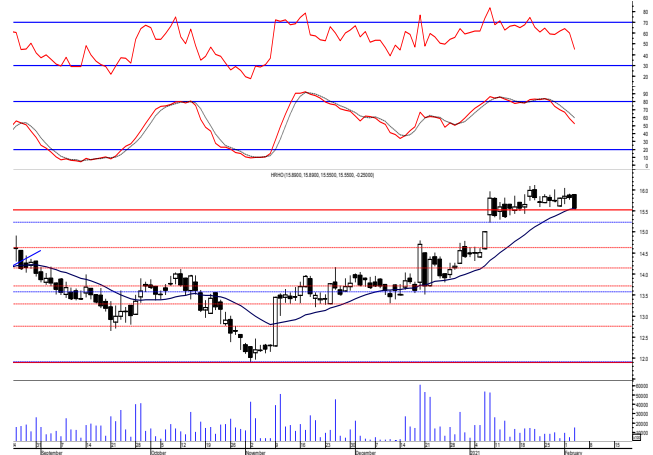
Support levels: 63.00, 60.00  
 Resistance levels: 64.50, 66.00



**Hermes Holding (HRHO.CA):**

Prices closed slightly negative on the upper boundary of the support zone after quiet trading performance leaving our outlook the same. Notice that it is very important to defend the mentioned zone to prove that buyers are still in control. New target zone within 16.60-17.10 where we believe it represents strong retracement level where may use trade on. Close stops should always be placed and respected to protect the downside.

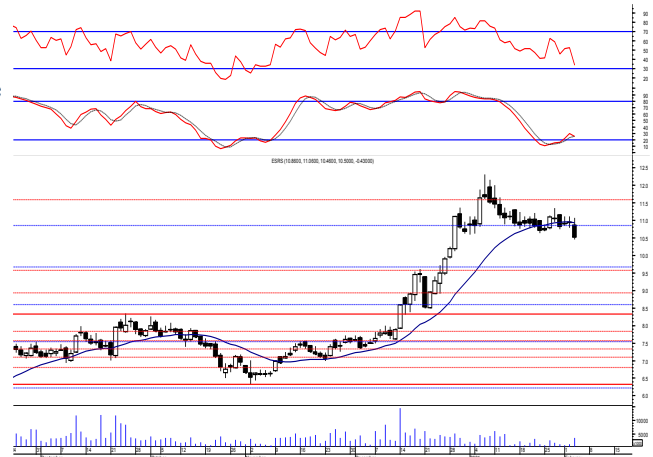
Support levels: 15.55-15.25, 14.60  
 Resistance levels: 16.60-17.10, 17.80



**El-Ezz steel rebar's' (ESRS.CA):**

Prices witnessed a downward move closing slightly below the support level 10.60 but still needs confirmation so everything is considered in place. Notice that confirming below the mentioned support will trigger an opposite trade opportunity where we can sell and buy near the next support.

Support levels: 10.60, 9.80  
 Resistance levels: 10.90, 11.60



**Disclaimer**

- This publication has been prepared by Blom Egypt Securities for information purposes only.
- It is not intended as an offer to buy or sell or a solicitation of an offer to buy or sell the securities mentioned.
- The information & opinions in this publication were prepared by Blom Egypt Securities research department accepts no liability or legal responsibility for losses & damages incurred arising from the use of this publication or its contents.

**Blom Egypt Securities**  
**Samir M. Azmi, CFTe, CETA**  
 Senior Technical Analyst  
[samir.azmi@blomsecurities.com](mailto:samir.azmi@blomsecurities.com)



Most active Stocks

Daily Technical Analysis Report

4 Feb, 2021

Stock Name (Reuters' Code)	Close	Trend	T1	T2	Support	Resistance	SL	Triggers	
								Lower	Upper
<b>Building Materials &amp; Construction</b>									
Arabian cement (ARCC.CA)	3.54	Dn.-Corr.	—	—	3.40	3.60	3.00	—	—
El Ezz Steel Rebar's (ESRS.CA)	10.50	Dn.-Corr.	—	—	10.60	10.90	10.60	—	—
Egyptian iron & steel; Co. (IRON.CA)	2.24	Bearish	—	—	2.05	2.30	—	—	—
GB auto (AUTO.CA)	3.62	Dn.-Corr.	—	—	3.50	3.77	2.95	—	—
Orascom construction (ORAS.CA)	98.40	Bullish	102.00√	109.00	96.00	102.00	81.00	—	—
South Valley Cement (SVCE.CA)	1.965	Up-Corr.	—	—	1.88	2.00	1.58	—	—
Elsweddy Cables (SWDY.CA)	10.13	Bullish	10.75	11.15	10.10	11.15	9.60	—	—
Upper Egypt general contracting (UEGC.CA)	1.17	Bullish	1.18√	1.35	1.08	1.18	0.995	—	—
<b>Chemicals</b>									
Abu-Qir fertilizers (ABUK.CA)	23.00	Bullish	24.80	25.90	22.80	24.80	19.20	—	—
Egyptian Financial & Indust. (EFIC.CA)	12.60	Up-Corr.	—	—	11.85	12.80	11.10	—	—
Egyptian chemical industries-Kima (EGCH.CA)	4.27	Up-Corr.	—	—	4.20	4.47	3.80	—	—
<b>Communications</b>									
Orascom investment holding (OIH.CA)	0.562	Up-Corr.	—	—	0.55	0.59	0.49	—	—
Telecom Egypt (ETEL.CA)	11.74	Up-Corr.	—	—	11.40	11.90	11.40	—	—
<b>Financial Services</b>									
Abu Dhabi International Bank (ADIB.CA)	12.10	Dn.-Corr.	—	—	11.20	12.10	11.20	—	—
Arabian for investments & development (AIH.CA)	0.638	Dn.-Corr.	—	—	0.59	0.645	0.59	—	—
Amer holding group (AMER.CA)	1.17	Dn.-Corr.	—	—	1.14	1.25	0.98	—	—
Commercial International Bank (COMI.CA)	63.30	Up-Corr.	—	—	63.00	64.50	58.50	—	—
Export development bank of Egypt (EXPA.CA)	14.24	Up-Corr.	—	—	14.00	14.60	13.30	—	—
<b>Holding Companies</b>									
CI capital holding for financial investments (CICH.CA)	4.28	Bullish	4.20√	4.50	4.00	4.37	3.70	—	—
Citadel capital (CCAP.CA)	1.617	Up-Corr.	—	—	1.53	1.60	1.39	—	—
Hermes Holding (HRHO.CA)	15.55	Bullish	16.60	17.80	15.20	17.10	14.60	—	—
Kuwaiti Holding (EKHO.CA)	1.079	Up-Corr.	—	—	1.03	1.09	0.94	—	—
Pioneers holding (PIOH.CA)	4.91	Bullish	4.75√	5.45	4.75	5.45	4.00	—	—
<b>Housing &amp; Real Estate</b>									
Egyptian For Tourism Resorts (EGTS.CA)	1.674	Up-Corr.	—	—	1.60	1.77	1.45	—	—
Elshams housing (ELSH.CA)	5.37	Dn.-Corr.	—	—	5.30	5.70	4.85	—	—
Emaar holding (EMFD.CA)	2.66	Dn.-Corr.	—	—	2.70	2.80	2.45	—	—
Heliopolis housing & development (HELL.CA)	5.97	Up-Corr.	—	—	5.90	6.20	5.50	—	—
Medinet Nasr for housing & Deve. (MNHD.CA)	3.96	Up-Corr.	—	—	3.95	4.15	3.45	—	—
6th. October Deve. Inv. (OCDI.CA)	15.69	Bullish	16.90	18.75	15.70	16.90	13.90	—	—
Palm hills development Co. (PHDC.CA)	1.734	Bullish	1.71√	1.85	1.70	1.85	1.40	—	—
Talaat Mustafa group holding (TMGH.CA)	7.31	Bullish	7.75	8.20	7.30	7.75	6.30	—	—
<b>Mining &amp; Gas</b>									
Alexandria Mineral Oils Co. (AMOC.CA)	3.29	Dn.-Corr.	—	—	3.13	3.37	3.00	—	—
Sidi Kerir Petrochemicals (SKPC.CA)	10.50	Bullish	9.85√	10.60√	10.60	11.10	9.80	—	—
<b>Textiles &amp; Clothes</b>									
Arab Co. for asset management & Deve. (ACAMD.CA)	5.91	Up-Corr.	—	—	5.50	5.90	4.65	—	—
Arab cotton ginning (ACGC.CA)	3.30	Up-Corr.	—	—	3.20	3.45	2.85	—	—
Oriental Weavers (ORWE.CA)	6.99	Up-Corr.	—	—	7.00	7.50	6.50	—	—
<b>Other Sectors</b>									
Egyptian Media Production City (MPRC.CA)	7.80	Up-Corr.	—	—	7.45	8.20	5.40	—	—
Egyptian Transport - Egytrans (ETRS.CA)	10.90	Up-Corr.	—	—	11.00	11.65	9.90	—	—
Orascom holding development (ORHD.CA)	5.22	Dn.-Corr.	—	—	4.85	5.35	4.45	—	—
United Arab Shipping (UASG.CA)	1.20	Dn.-Corr.	—	—	1.125	1.22	1.05	—	—

Disclaimer

- This publication has been prepared by Blom Egypt Securities for information purposes only.
- It is not intended as an offer to buy or sell or a solicitation of an offer to buy or sell the securities mentioned.
- The information & opinions in this publication were prepared by Blom Egypt Securities research department accepts no liability or legal responsibility for losses & damages incurred arising from the use of this publication or its contents.

**Blom Egypt Securities**  
Samir M. Azmi, CFTe, CETA  
Senior Technical Analyst  
samir.azmi@blomsecurities.com



**Guidelines for using BLOM daily Technical Analysis Report**

**Close:**

Is recorded as the last trade in the session.

**Trend:**

**Bullish :**

The strategy is to buy the dips.

**Bearish :**

The strategy is to sell the rallies.

**Flat :**

The strategy is to trade the range between the triggers.

**Up-Corr. :**

A move against the major trend when it is down.

**Dn.-Corr. :**

A move against the major trend when it is up.

**Targets :**

Take some profit by reducing a portion of the position whenever a price target is been hit.

**Support :**

A level below market price (previous lows) where buyers showed strength, in a bull market buy near the support and don't sell on the resistance. A break below the Support is considered to be a bearish sign.

**Resistance :**

A level above market price (previous highs) where sellers showed strength, in a bear market sell near the resistance level and don't buy on the support. A break above the resistance is considered to be a bullish sign.

**Stop Loss :**

Must exit the current position whenever the closing price is (1% to 2%) below the stop loss and confirmed by volume.

**Triggers :**

The range between the lower trigger and the upper is used for trading, break of any of them, the move would continue in the same direction.

**Yellow rows:**

indication that the stock closed below/above support, stop-loss, or resistance but the break is not confirmed yet.

**Disclaimer**

- This publication has been prepared by Blom Egypt Securities for information purposes only.
- It is not intended as an offer to buy or sell or a solicitation of an offer to buy or sell the securities mentioned.
- The information & opinions in this publication were prepared by Blom Egypt Securities research department accepts no liability or legal responsibility for losses & damages incurred arising from the use of this publication or its contents.

**Blom Egypt Securities**  
**Samir M. Azmi, CFTe, CETA**  
**Senior Technical Analyst**  
**samir.azmi@blomsecurities.com**