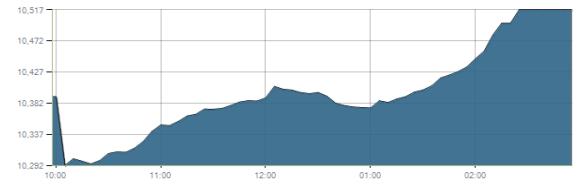




Indices intraday trends

EGX 30

مؤشر EGX 30
اليوم - 30/09/2021

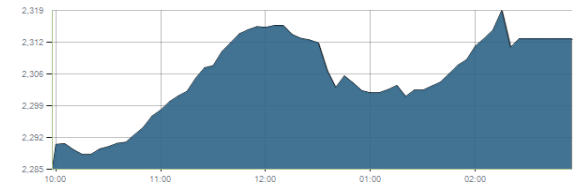


Key Levels

Support 1	10350	Resistance 1	10680
Support 2	10150	Resistance 2	10850-10950

EGX 50 EWI

مؤشر EGX 50 EWI
اليوم - 30/09/2021

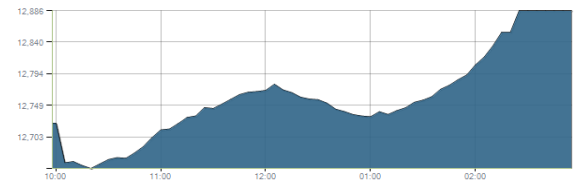


Key Levels

Close		2313.23	
Support 1	2240	Resistance 1	2310
Support 2	2200	Resistance 2	2355

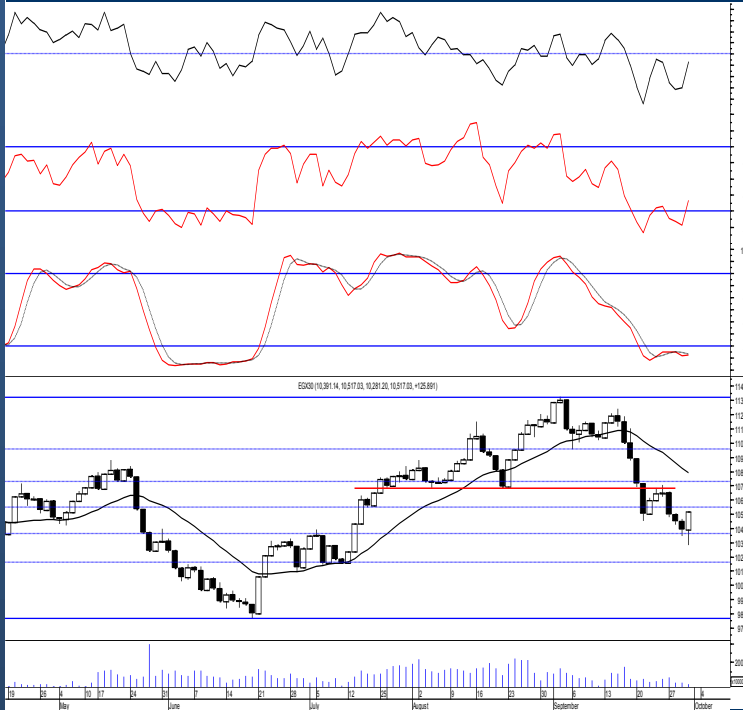
EGX 30 capped

مؤشر EGX 30 Capped
اليوم - 30/09/2021



Key Levels

Close		12885.56	
Support 1	12800	Resistance 1	12940
Support 2	12630	Resistance 2	13170



Market Commentary:

The EGX30 successfully rebounded from our support level 10350 after trading slightly below as most of the stocks moved higher pushing the index higher closing on the session's high. Weak trading volumes still keeps the market risk keeping our outlook unchanged.

We still recommend staying on cash till a clear reentry signal is clearly given specially that the market risk was elevated by breaking below 10680.

Increasing trading volumes is an important to show on any rebounding attempt to prove real buying strength otherwise any upward move will only be an up correction.

Close	10517.03	Trend	Bearish
Pre. Close	10391.14	Target 1	---
Change	↑ 125.89 (1.21%)	Target 2	---
Day's range	10281.20 — 10517.03	Stop-loss	---
52week's high	11675.69	52week's low	9769.18.18

Disclaimer

- This publication has been prepared by Blom Egypt Securities for information purposes only.
- It is not intended as an offer to buy or sell or a solicitation of an offer to buy or sell the securities mentioned.
- The information & opinions in this publication were prepared by Blom Egypt Securities research department accepts no liability or legal responsibility for losses & damages incurred arising from the use of this publication or its contents.

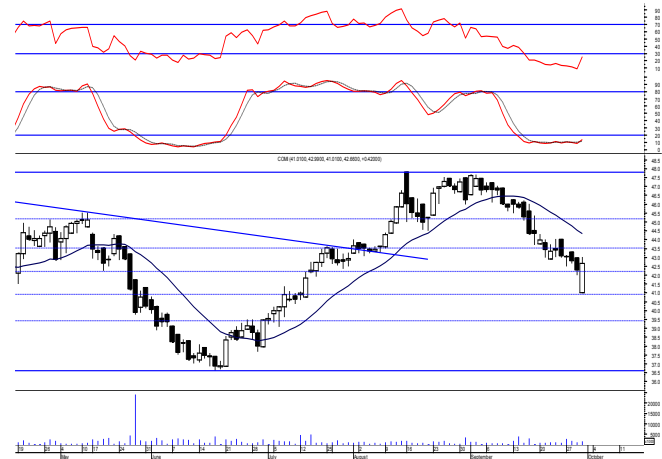
Blom Egypt Securities
Samir M. Azmi, CFTe, CETA
Senior Technical Analyst
samir.azmi@blomsecurities.com



Commercial international bank (COMI.CA):

Prices gapped down ahead of trading and continued down near the support level 40.90 before strongly rebounding from closing above our support level 42.30 keeping levels the same. Weak trading volumes is our only concern so stay heads up. Yet, we recommend staying on cash & wait for confirmed buy signal so that we can react safely on. Any existing positions should always keep stops placed and respected

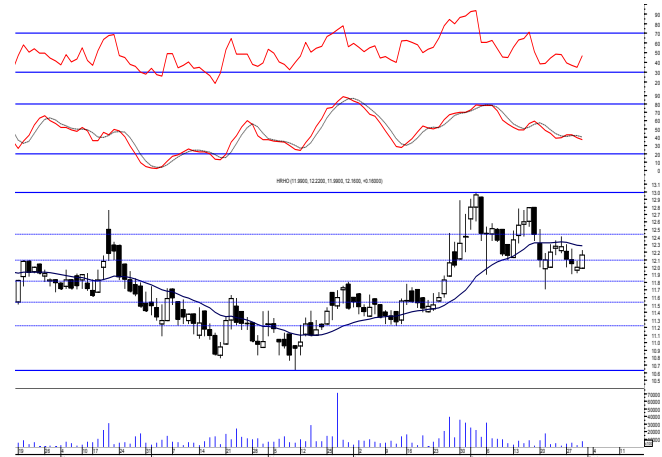
Support levels: 42.30, 40.90
Resistance levels: 43.50, 44.70



Hermes Holding (HRHO.CA):

Prices managed to defend our support level 12.10 closing near the high which as we said due to positive signals occurred on the intraday frame on Tuesday's session so levels are considered unchanged and so for our outlook. Existing positions are advised to hold keeping stops placed and respected below 11.25 as any decline below will give back the hand to selling party.

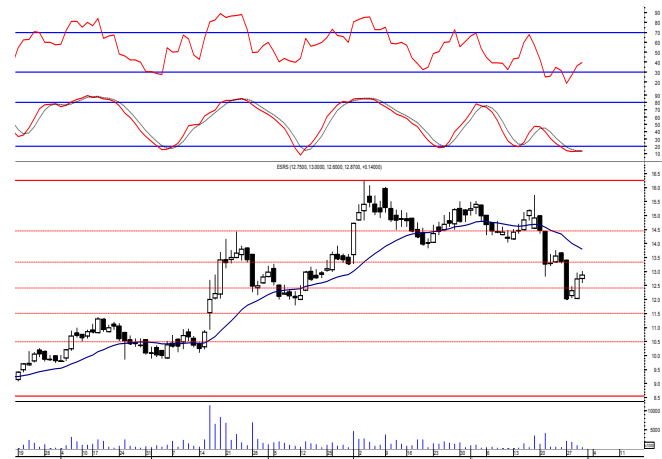
Support levels: 12.10, 11.70
Resistance levels: (12.60-12.75), (13.25-13.40)



El-Ezz steel rebar's' (ESRS.CA):

Prices remained narrowly flat closing slightly positive as balanced trading performance dominated leaving everything in place. Short term traders may use the new range for short term trades keeping stop placed below the mentioned support while conservatives to wait for all key elements to be clear to react safely on.

Support levels: 12.30, 11.40
Resistance levels: 13.40, 14.50



Disclaimer

- This publication has been prepared by Blom Egypt Securities for information purposes only.
- It is not intended as an offer to buy or sell or a solicitation of an offer to buy or sell the securities mentioned.
- The information & opinions in this publication were prepared by Blom Egypt Securities research department accepts no liability or legal responsibility for losses & damages incurred arising from the use of this publication or its contents.

Blom Egypt Securities
Samir M. Azmi, CFTe, CETA
Senior Technical Analyst
samir.azmi@blomsecurities.com



Most active Stocks

Daily Technical Analysis Report

3 Oct, 2021

Stock Name (Reuters' Code)	Close	Trend	T1	T2	Support	Resistance	SL	Triggers	
								Lower	Upper
Building Materials & Construction									
Arabian cement (ARCC.CA)	4.15	Bearish	—	—	4.10	4.60	—	—	—
El Ezz Steel Rebar's (ESRS.CA)	12.87	Dn.-Corr.	—	—	12.30	13.40	11.40	—	—
GB auto (AUTO.CA)	4.32	Bullish	4.45	4.75	4.20	4.55	3.75	—	—
Orascom construction (ORAS.CA)	73.95	Dn.-Corr.	—	—	71.00	75.20	68.50	—	—
South Valley Cement (SVCE.CA)	1.834	Bearish	—	—	1.70	1.95	—	—	—
Elsweddy Cables (SWDY.CA)	8.17	UP-Corr.	—	—	7.90	8.35	7.90	—	—
Upper Egypt general contracting (UEGC.CA)	0.747	Up-Corr.	—	—	0.725	0.76	0.672	—	—
Chemicals									
Abu-Qir fertilizers (ABUK.CA)	19.81	Up-Corr.	—	—	19.70	21.00	18.30	—	—
Egyptian Financial & Indust. (EFIC.CA)	13.46	Up-Corr.	—	—	12.60	13.40	12.10	—	—
Egyptian chemical industries-Kima (EGCH.CA)	3.80	Bearish	—	—	3.75	4.00	—	—	—
Communications									
Fawry for banking tech. & electronic payment (FWRY.CA)	14.21	Bearish	—	—	13.60	14.90	—	—	—
Orascom investment holding (OIH.CA)	0.257	Dn.-Corr.	—	—	0.25	0.277	0.215	—	—
Telecom Egypt (ETEL.CA)	14.14	Dn.-Corr.	—	—	13.80	14.30	12.90	—	—
Financial Services									
Abu Dhabi International Bank (ADIB.CA)	15.10	Up-Corr.	—	—	14.80	16.30	12.60	—	—
Arabian for investments & development (AIH.CA)	0.478	Up-Corr.	—	—	0.475	0.515	0.403	—	—
Amer holding group (AMER.CA)	0.79	Up-Corr.	—	—	0.78	0.83	0.78	—	—
Commercial International Bank (COMI.CA)	42.66	Dn.-Corr.	—	—	42.30	43.50	42.30	—	—
Export development bank of Egypt (EXPA.CA)	9.78	Up-Corr.	—	—	9.15	10.00	9.15	—	—
Holding Companies									
Citadel capital (CCAP.CA)	1.144	Up-Corr.	—	—	1.09	1.16	1.09	—	—
Hermes Holding (HRHO.CA)	12.16	Dn.-Corr.	—	—	12.10	12.75	11.25	—	—
Kuwaiti Holding (EKHO.CA)	1.152	Dn.-Corr.	—	—	1.115	1.15	0.96	—	—
MM group for industry & international trade (MTIE.CA)	6.50	Bearish	—	—	6.20	6.70	—	—	—
Orascom financial holding (OFH.CA)	0.248	Bearish	—	—	0.23	0.26	—	—	—
Pioneers holding (PIOH.CA)	5.61	Up-Corr.	—	—	5.45	5.80	5.05	—	—
Housing & Real Estate									
Egyptian For Tourism Resorts (EGTS.CA)	1.805	Bearish	—	—	1.77	1.95	—	—	—
Elshams housing (ELSH.CA)	12.48	Up-Corr.	—	—	12.10	13.00	10.00	—	—
Emaar holding (EMFD.CA)	2.41	Dn.-Corr.	—	—	2.37	2.48	2.28	—	—
Heliopolis housing & development (HELI.CA)	4.98	Dn.-Corr.	—	—	4.85	5.05	4.85	—	—
Medinet Nasr for housing & Deve. (MNHD.CA)	2.68	Bearish	—	—	2.53	2.73	—	—	—
6th. October Deve. Inv. (OCDI.CA)	18.49	Dn.-Corr.	—	—	17.90	18.60	16.90	—	—
Palm hills development Co. (PHDC.CA)	1.94	Dn.-Corr.	—	—	1.90	1.96	1.73	—	—
Talaat Mustafa group holding (TMGH.CA)	7.40	Dn.-Corr.	—	—	6.90	7.50	6.90	—	—
Mining & Gas									
Alexandria Mineral Oils Co. (AMOC.CA)	3.80	Dn.-Corr.	—	—	3.75	3.96	3.20	—	—
Sidi Kerir Petrochemicals (SKPC.CA)	8.89	Bearish	—	—	8.65	9.30	—	—	—
Textiles & Clothes									
Arab Co. for asset management & Deve. (ACAMD.CA)	0.60	Up-Corr.	—	—	0.57	0.62	0.54	—	—
Arab cotton ginning (ACGC.CA)	1.73	Up-Corr.	—	—	1.70	1.78	1.70	—	—
Oriental Weavers (ORWE.CA)	8.72	Dn.-Corr.	—	—	8.55	8.90	7.50	—	—
Other Sectors									
Egyptian Media Production City (MPC.CA)	5.32	Bearish	—	—	5.04	5.60	—	—	—
Egyptian Transport - Egytrans (ETRS.CA)	13.66	Bearish	—	—	12.45	13.60	—	—	—
Orascom holding development (ORHD.CA)	4.99	Up-Corr.	—	—	4.85	5.05	4.64	—	—
United Arab Shipping (UASG.CA)	1.153	Bearish	—	—	1.09	1.15	—	—	—

Disclaimer

- This publication has been prepared by Blom Egypt Securities for information purposes only.
- It is not intended as an offer to buy or sell or a solicitation of an offer to buy or sell the securities mentioned.
- The information & opinions in this publication were prepared by Blom Egypt Securities research department accepts no liability or legal responsibility for losses & damages incurred arising from the use of this publication or its contents.

Blom Egypt Securities
Samir M. Azmi, CFTe, CETA
Senior Technical Analyst
samir.azmi@blomsecurities.com



Guidelines for using BLOM daily Technical Analysis Report

<u>Close:</u>	Is recorded as the last trade in the session.
<u>Trend:</u>	
Bullish :	The strategy is to buy the dips.
Bearish :	The strategy is to sell the rallies.
Flat :	The strategy is to trade the range between the triggers.
Up-Corr. :	A move against the major trend when it is down.
Dn.-Corr. :	A move against the major trend when it is up.
<u>Targets :</u>	Take some profit by reducing a portion of the position whenever a price target is been hit.
<u>Support :</u>	A level below market price (previous lows) where buyers showed strength, in a bull market buy near the support and don't sell on the resistance. A break below the Support is considered to be a bearish sign.
<u>Resistance :</u>	A level above market price (previous highs) where sellers showed strength, in a bear market sell near the resistance level and don't buy on the support. A break above the resistance is considered to be a bullish sign.
<u>Stop Loss :</u>	Must exit the current position whenever the closing price is (1% to 2%) below the stop loss and confirmed by volume.
<u>Triggers :</u>	The range between the lower trigger and the upper is used for trading, break of any of them, the move would continue in the same direction.
<u>Yellow rows:</u>	indication that the stock closed below/above support, stop-loss, or resistance but the break is not confirmed yet.

Disclaimer

- This publication has been prepared by Blom Egypt Securities for information purposes only.
- It is not intended as an offer to buy or sell or a solicitation of an offer to buy or sell the securities mentioned.
- The information & opinions in this publication were prepared by Blom Egypt Securities research department accepts no liability or legal responsibility for losses & damages incurred arising from the use of this publication or its contents.

Blom Egypt Securities
Samir M. Azmi, CFTe, CETA
Senior Technical Analyst
samir.azmi@blomsecurities.com