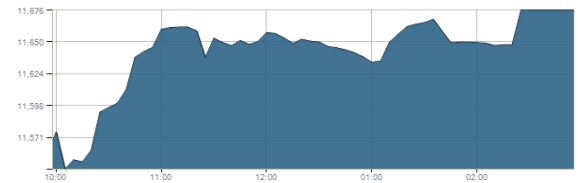


Indices intraday trends

EGX 30

مؤشر EGX 30
اليوم - 02/11/2021

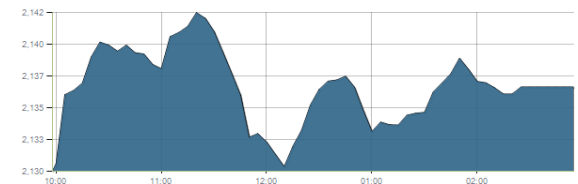


Key Levels

Support 1	11320-11200	Resistance 1	11675
Support 2	11100	Resistance 2	12250

EGX 50 EWI

مؤشر EGX 50 EWI
اليوم - 02/11/2021

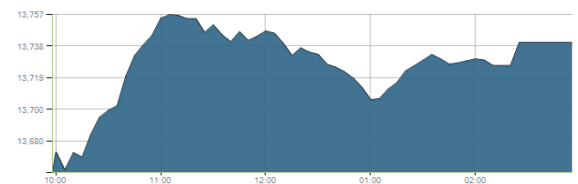


Key Levels

Close		2136.55	
Support 1	2120	Resistance 1	2150
Support 2	2060	Resistance 2	2230

EGX 30 capped

مؤشر EGX 30 Capped
اليوم - 02/11/2021



Key Levels

Close		13470.12	
Support 1	13470	Resistance 1	13820
Support 2	13330	Resistance 2	14100

Market Commentary:

The EGX30 extended higher reaching our first target and major resistance level 11675 closing almost on.

Trading volumes are still increasing which as we said suggests further climbing clearing our mentioned level which should be confirmed by price action so we highly recommend to watch carefully.

Trading should be very selective and conservative keeping close stops placed and respected to reduce market risk.

Notice that the mentioned support zone should be respected in any decline as any violation to it will indicate that the previous breakout was false and yet further decline will follow.

Close	11676.38	Trend	Bullish
Pre. Close	11568.27	Target 1	11675
Change	↑ 108.11 (0.93%)	Target 2	12250
Day's range	11545.11 — 11676.38	Stop-loss	10680
52week's high	11675.69	52week's low	9769.18.18

Disclaimer

- This publication has been prepared by Blom Egypt Securities for information purposes only.
- It is not intended as an offer to buy or sell or a solicitation of an offer to buy or sell the securities mentioned.
- The information & opinions in this publication were prepared by Blom Egypt Securities research department accepts no liability or legal responsibility for losses & damages incurred arising from the use of this publication or its contents.

Blom Egypt Securities
Samir M. Azmi, CFTe, CETA
Senior Technical Analyst
samir.azmi@blomsecurities.com



Commercial international bank (COMI.CA):

Prices soared higher hitting our 2nd target and resistance level 52.80 closing above turning it into support. As we said, the mentioned resistance level represents major resistance level. Thus, conservative traders are advised to wait for second day confirmation, while risk takers may add to existing positions using the coming level to trade on bearing in mind that violation to 52.80 will indicate that a down correction will start from so stay heads up.

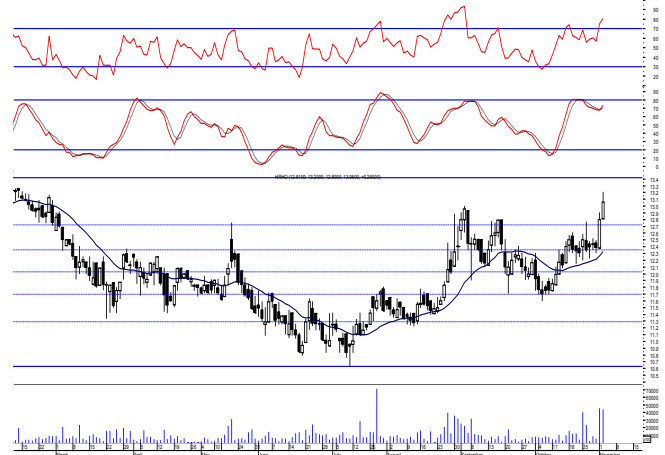
Support levels: 52.80, 51.60
Resistance levels: 57.70, 60.00



Hermes Holding (HRHO.CA):

Prices witnessed another upward move breaking our mentioned resistance zone turning it into support. Yet, further climbing to 13.40 is now expected where we may use the range to trade on. Existing positions are advised to hold keeping stops placed and respected below 12.10 as any decline below will give back the hand to selling party.

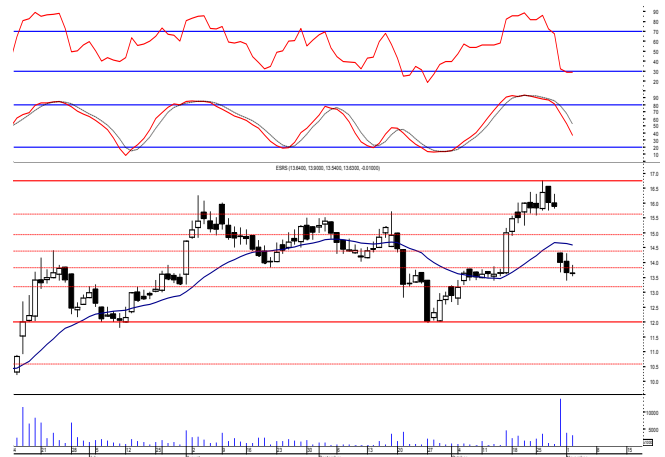
Support levels: (12-75-12.60), 12.10
Resistance levels: 13.40, 14.25



El-Ezz steel rebar's' (ESRS.CA):

Prices remained narrowly flat as quiet balanced trading performance dominated closing slightly below our support level 13.80. 2nd day close below is still needed to confirm violation which will lead to further decline to the next support level 13.20 where we should watch carefully as it represents our short term stop loss level. We still believe that current levels represents a good buying opportunity as long as prices holds above the support level 13.80 expecting rebounding from back to the old price range.

Support levels: 13.80, 13.20
Resistance levels: 14.50, 15.20



Disclaimer

- This publication has been prepared by Blom Egypt Securities for information purposes only.
- It is not intended as an offer to buy or sell or a solicitation of an offer to buy or sell the securities mentioned.
- The information & opinions in this publication were prepared by Blom Egypt Securities research department accepts no liability or legal responsibility for losses & damages incurred arising from the use of this publication or its contents.

Blom Egypt Securities
Samir M. Azmi, CFTe, CETA
Senior Technical Analyst
samir.azmi@blomsecurities.com



Most active Stocks

Daily Technical Analysis Report

3 Nov, 2021

Stock Name (Reuters' Code)	Close	Trend	T1	T2	Support	Resistance	SL	Triggers	
								Lower	Upper
Building Materials & Construction									
Arabian cement (ARCC.CA)	3.73	Up-Corr.	—	—	3.45	3.80	3.20	—	—
El Ezz Steel Rebar's (ESRS.CA)	13.63	Dn.-Corr.	—	—	13.80	14.50	13.20	—	—
GB auto (AUTO.CA)	4.50	Dn.-Corr.	—	—	4.20	4.55	3.75	—	—
Orascom construction (ORAS.CA)	72.50	Dn.-Corr.	—	—	71.00	74.50	68.50	—	—
South Valley Cement (SVCE.CA)	1.502	Bearish	—	—	1.50	1.70	—	—	—
Elsweddy Cables (SWDY.CA)	8.74	UP-Corr.	—	—	8.35	8.85	7.90	—	—
Upper Egypt general contracting (UEGC.CA)	0.655	Up-Corr.	—	—	0.65	0.69	0.57	—	—
Chemicals									
Abu-Qir fertilizers (ABUK.CA)	19.56	Dn.-Corr.	—	—	19.20	19.90	19.20	—	—
Egyptian Financial & Indust. (EFIC.CA)	12.49	Up-Corr.	—	—	12.10	12.70	12.10	—	—
Egyptian chemical industries-Kima (EGCH.CA)	3.32	Bearish	—	—	3.00	3.35	—	—	—
Communications									
Fawry for banking tech. & electronic payment (FWRY.CA)	14.49	Up-Corr.	—	—	13.30	14.90	14.90	—	—
Orascom investment holding (OIH.CA)	0.249	Dn.-Corr.	—	—	0.215	0.25	0.215	—	—
Telecom Egypt (ETEL.CA)	13.94	Dn.-Corr.	—	—	13.80	14.30	12.90	—	—
Financial Services									
Abu Dhabi International Bank (ADIB.CA)	14.09	Up-Corr.	—	—	14.10	15.10	12.60	—	—
Arabian for investments & development (AIH.CA)	0.364	Bearish	—	—	0.31	0.37	—	—	—
Amer holding group (AMER.CA)	1.076	Dn.-Corr.	—	—	1.02	1.14	0.96	—	—
Commercial International Bank (COMI.CA)	53.35	Bullish	52.80√	57.70	51.60	52.80	46.60	—	—
Export development bank of Egypt (EXPA.CA)	9.44	Up-Corr.	—	—	9.15	10.10	9.15	—	—
Holding Companies									
Citadel capital (CCAP.CA)	1.334	Up-Corr.	—	—	1.30	1.375	1.09	—	—
Hermes Holding (HRHO.CA)	13.06	Dn.-Corr.	—	—	12.60	13.40	11.25	—	—
Kuwaiti Holding (EKHO.CA)	1.371	Bullish	1.23√	1.39√	1.23	1.39	1.11	—	—
MM group for industry & international trade (MTIE.CA)	6.30	Up-Corr.	—	—	6.20	6.70	6.20	—	—
Orascom financial holding (OFH.CA)	0.229	Bearish	—	—	0.195	0.23	—	—	—
Housing & Real Estate									
Egyptian For Tourism Resorts (EGTS.CA)	1.48	Bearish	—	—	1.465	1.63	—	—	—
Elshams housing (ELSH.CA)	6.87	Up-Corr.	—	—	6.75	8.30	6.04	—	—
Emaar holding (EMFD.CA)	2.55	Dn.-Corr.	—	—	2.50	2.575	2.28	—	—
Heliopolis housing & development (HELL.CA)	4.42	Bearish	—	—	4.10	4.60	—	—	—
Medinet Nasr for housing & Deve. (MNHD.CA)	2.32	Up-Corr.	—	—	2.25	2.53	2.16	—	—
6th. October Deve. Inv. (OCDI.CA)	18.15	Flat	—	—	—	—	16.90	17.90	19.25
Palm hills development Co. (PHDC.CA)	1.952	Dn.-Corr.	—	—	1.90	1.96	1.73	—	—
Talaat Mustafa group holding (TMGH.CA)	7.78	Dn.-Corr.	—	—	7.50	7.90	6.90	—	—
Mining & Gas									
Alexandria Mineral Oils Co. (AMOC.CA)	4.37	Bullish	4.40√	4.80	4.00	4.40	3.55	—	—
Sidi Kerir Petrochemicals (SKPC.CA)	8.03	Up-Corr.	—	—	7.75	8.10	7.20	—	—
Textiles & Clothes									
Arab Co. for asset management & Deve. (ACAMD.CA)	0.46	Bearish	—	—	0.43	0.502	—	—	—
Arab cotton ginning (ACGC.CA)	1.694	Up-Corr.	—	—	1.62	1.778	1.455	—	—
Oriental Weavers (ORWE.CA)	8.39	Dn.-Corr.	—	—	8.05	8.55	7.50	—	—
Other Sectors									
Egyptian Media Production City (MPRC.CA)	4.89	Up-Corr.	—	—	4.75	5.10	4.40	—	—
Egyptian Transport - Egytrans (ETRS.CA)	13.00	Up-Corr.	—	—	12.50	13.60	12.50	—	—
Orascom holding development (ORHD.CA)	5.45	Up-Corr.	—	—	5.30	5.55	4.64	—	—
United Arab Shipping (UASG.CA)	0.973	Bearish	—	—	0.94	1.052	—	—	—

Disclaimer

- This publication has been prepared by Blom Egypt Securities for information purposes only.
- It is not intended as an offer to buy or sell or a solicitation of an offer to buy or sell the securities mentioned.
- The information & opinions in this publication were prepared by Blom Egypt Securities research department accepts no liability or legal responsibility for losses & damages incurred arising from the use of this publication or its contents.

Blom Egypt Securities
Samir M. Azmi, CFTe, CETA
Senior Technical Analyst
samir.azmi@blomsecurities.com



Guidelines for using BLOM daily Technical Analysis Report

<u>Close:</u>	Is recorded as the last trade in the session.
<u>Trend:</u>	
Bullish :	The strategy is to buy the dips.
Bearish :	The strategy is to sell the rallies.
Flat :	The strategy is to trade the range between the triggers.
Up-Corr. :	A move against the major trend when it is down.
Dn.-Corr. :	A move against the major trend when it is up.
<u>Targets :</u>	Take some profit by reducing a portion of the position whenever a price target is been hit.
<u>Support :</u>	A level below market price (previous lows) where buyers showed strength, in a bull market buy near the support and don't sell on the resistance. A break below the Support is considered to be a bearish sign.
<u>Resistance :</u>	A level above market price (previous highs) where sellers showed strength, in a bear market sell near the resistance level and don't buy on the support. A break above the resistance is considered to be a bullish sign.
<u>Stop Loss :</u>	Must exit the current position whenever the closing price is (1% to 2%) below the stop loss and confirmed by volume.
<u>Triggers :</u>	The range between the lower trigger and the upper is used for trading, break of any of them, the move would continue in the same direction.
<u>Yellow rows:</u>	indication that the stock closed below/above support, stop-loss, or resistance but the break is not confirmed yet.

Disclaimer

- This publication has been prepared by Blom Egypt Securities for information purposes only.
- It is not intended as an offer to buy or sell or a solicitation of an offer to buy or sell the securities mentioned.
- The information & opinions in this publication were prepared by Blom Egypt Securities research department accepts no liability or legal responsibility for losses & damages incurred arising from the use of this publication or its contents.

Blom Egypt Securities
Samir M. Azmi, CFTe, CETA
Senior Technical Analyst
samir.azmi@blomsecurities.com