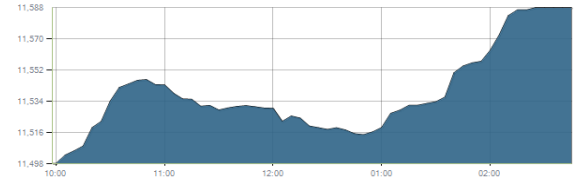




Indices intraday trends

EGX 30

مؤشر EGX 30
اليوم - 09/11/2021

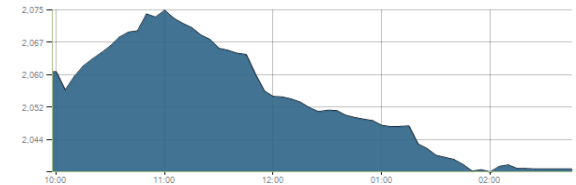


Key Levels

Support 1	11320-11200	Resistance 1	11675
Support 2	11100	Resistance 2	12250

EGX 50 EWI

مؤشر EGX 50 EWI
اليوم - 09/11/2021

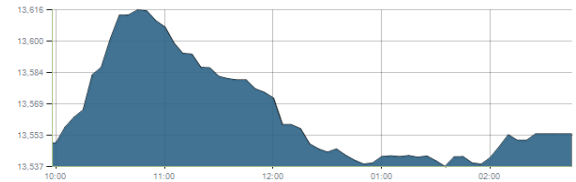


Key Levels

Close		2036.83	
Support 1	1970	Resistance 1	2060
Support 2	1890	Resistance 2	2120

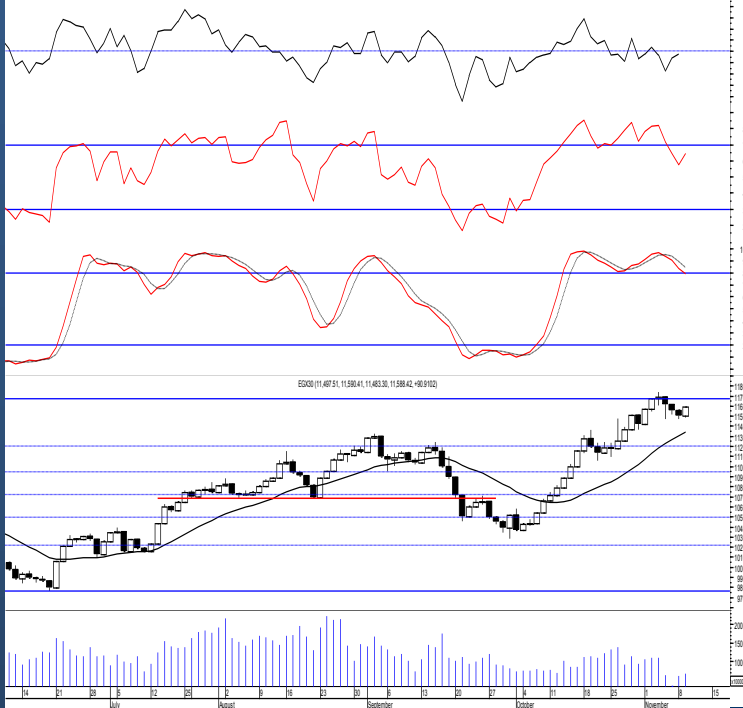
EGX 30 capped

مؤشر EGX 30 Capped
اليوم - 09/11/2021



Key Levels

Close		13553.23	
Support 1	13470	Resistance 1	13820
Support 2	13330	Resistance 2	14100



Market Commentary:

The EGX30 closed slightly positive after quiet balanced trading performance in most of the stocks leaving the index levels unchanged and so for our outlook.

Trading volumes remained confirming the balanced performance. Further climbing will only take place by clearing our mentioned resistance level so we highly recommend to watch carefully. Trading should be very selective and conservative keeping close stops placed and respected to reduce market risk. Notice that the mentioned support zone should be respected in any decline as any violation to it will indicate that bears are in control further decline will follow.

Close	11588.42	Trend	Dn.-Corr.
Pre. Close	11497.51	Target 1	---
Change	↑ 90.91 (0.79%)	Target 2	---
Day's range	11483.30 — 11590.41	Stop-loss	10680
52week's high	11675.69	52week's low	9769.18.18

Disclaimer

- This publication has been prepared by Blom Egypt Securities for information purposes only.
- It is not intended as an offer to buy or sell or a solicitation of an offer to buy or sell the securities mentioned.
- The information & opinions in this publication were prepared by Blom Egypt Securities research department accepts no liability or legal responsibility for losses & damages incurred arising from the use of this publication or its contents.

Blom Egypt Securities
Samir M. Azmi, CFTe, CETA
Senior Technical Analyst
samir.azmi@blomsecurities.com



Commercial international bank (COMI.CA):

Prices managed to restore support level 52.80 closing near the high which as we said turns the short term trend into bullish setting the old target at 57.70.

Defending the mentioned support levels keeps bullish sentiment intact where we use the mentioned range to safely trade on.

Support levels: 52.80, 51.60
Resistance levels: 57.70, (63.00-64.05)

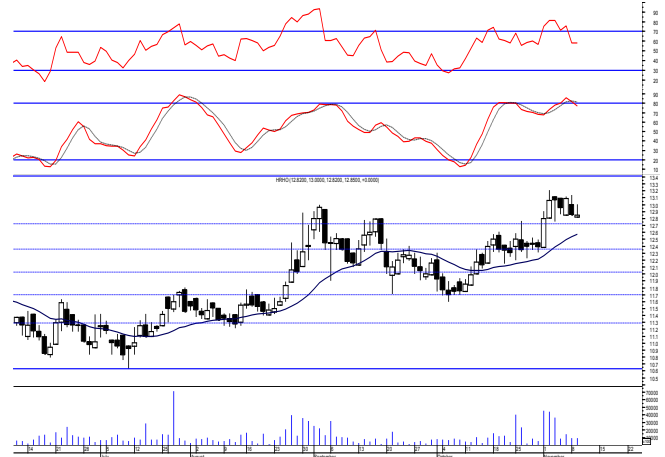


Hermes Holding (HRHO.CA):

Prices closed with no change after quiet trading performance overwhelmed most of the session within the same range leaving everything in place.

Existing positions are advised to hold keeping stops placed and respected below 12.10 as any decline below will give back the hand to selling party.

Support levels: (12-75-12.60), 12.10
Resistance levels: 13.40, 14.25



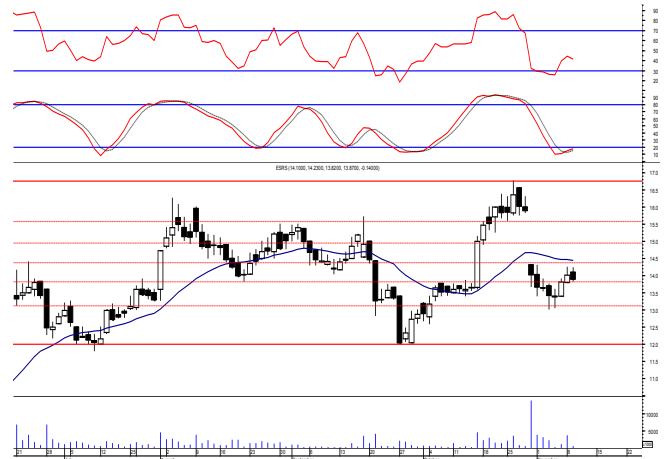
El-Ezz steel rebar's' (ESRS.CA):

Prices remained quietly flat closing slightly negative within the same range keeping everything in place.

As we said, by managing to confirm closing above the mentioned level, further climbing is now expected to the coming resistance level 14.50 & may extend to 15.60 where we may safely use for quick trading.

Stops should be placed and respected below 13.20

Support levels: 14.50, 13.80
Resistance levels: 15.20, 15.60



Disclaimer

- This publication has been prepared by Blom Egypt Securities for information purposes only.
- It is not intended as an offer to buy or sell or a solicitation of an offer to buy or sell the securities mentioned.
- The information & opinions in this publication were prepared by Blom Egypt Securities research department accepts no liability or legal responsibility for losses & damages incurred arising from the use of this publication or its contents.

Blom Egypt Securities
Samir M. Azmi, CFTe, CETA
Senior Technical Analyst
samir.azmi@blomsecurities.com



Most active Stocks

Daily Technical Analysis Report

10 Nov, 2021

Stock Name (Reuters' Code)	Close	Trend	T1	T2	Support	Resistance	SL	Triggers	
								Lower	Upper
Building Materials & Construction									
Arabian cement (ARCC.CA)	3.80	Up-Corr.	—	—	3.45	3.80	3.20	—	—
El Ezz Steel Rebar's (ESRS.CA)	13.87	Dn.-Corr.	—	—	13.50	14.50	13.20	—	—
GB auto (AUTO.CA)	4.04	Dn.-Corr.	—	—	3.95	4.10	3.75	—	—
Orascom construction (ORAS.CA)	70.21	Dn.-Corr.	—	—	68.50	71.70	68.50	—	—
South Valley Cement (SVCE.CA)	1.428	Bearish	—	—	1.324	1.50	—	—	—
Elsweddy Cables (SWDY.CA)	8.28	UP-Corr.	—	—	7.90	8.35	7.90	—	—
Upper Egypt general contracting (UEGC.CA)	0.635	Up-Corr.	—	—	0.614	0.65	0.57	—	—
Chemicals									
Abu-Qir fertilizers (ABUK.CA)	19.35	Dn.-Corr.	—	—	19.20	19.90	19.20	—	—
Egyptian Financial & Indust. (EFIC.CA)	12.03	Bearish	—	—	11.85	12.15	—	—	—
Egyptian chemical industries-Kima (EGCH.CA)	3.41	Up-Corr.	—	—	3.30	3.55	3.00	—	—
Communications									
Fawry for banking tech. & electronic payment (FWRY.CA)	14.20	Up-Corr.	—	—	13.30	14.90	14.90	—	—
Orascom investment holding (OIH.CA)	0.24	Dn.-Corr.	—	—	0.215	0.25	0.215	—	—
Telecom Egypt (ETEL.CA)	13.75	Dn.-Corr.	—	—	13.25	13.90	12.90	—	—
Financial Services									
Abu Dhabi International Bank (ADIB.CA)	13.97	Up-Corr.	—	—	12.60	14.15	12.60	—	—
Arabian for investments & development (AIH.CA)	0.359	Bearish	—	—	0.31	0.37	—	—	—
Amer holding group (AMER.CA)	1.048	Dn.-Corr.	—	—	1.02	1.14	0.96	—	—
Commercial International Bank (COMI.CA)	53.75	Bullish	57.70	63.00	52.80	57.70	46.60	—	—
Export development bank of Egypt (EXPA.CA)	9.08	Bearish	—	—	8.10	9.20	—	—	—
Holding Companies									
Citadel capital (CCAP.CA)	1.259	Up-Corr.	—	—	1.24	1.305	1.09	—	—
Hermes Holding (HRHO.CA)	12.85	Dn.-Corr.	—	—	12.60	13.40	11.25	—	—
Kuwaiti Holding (EKHO.CA)	1.40	Bullish	1.23√	1.39√	1.23	1.39	1.11	—	—
MM group for industry & international trade (MTIE.CA)	6.17	Bearish	—	—	5.90	6.20	—	—	—
Orascom financial holding (OFH.CA)	0.225	Bearish	—	—	0.195	0.23	—	—	—
Housing & Real Estate									
Egyptian For Tourism Resorts (EGTS.CA)	1.404	Bearish	—	—	1.21	1.47	—	—	—
Elshams housing (ELSH.CA)	6.75	Up-Corr.	—	—	6.05	6.80	5.40	—	—
Emaar holding (EMFD.CA)	2.55	Dn.-Corr.	—	—	2.50	2.645	2.28	—	—
Heliopolis housing & development (HELL.CA)	4.10	Bearish	—	—	4.10	4.60	—	—	—
Medinet Nasr for housing & Deve. (MNHD.CA)	2.25	Up-Corr.	—	—	2.16	2.27	2.16	—	—
6th. October Deve. Inv. (OCDI.CA)	18.00	Flat	—	—	—	—	16.90	17.90	19.25
Palm hills development Co. (PHDC.CA)	1.856	Dn.-Corr.	—	—	1.73	1.91	1.73	—	—
Talaat Mustafa group holding (TMGH.CA)	7.51	Dn.-Corr.	—	—	7.50	7.90	6.90	—	—
Mining & Gas									
Alexandria Mineral Oils Co. (AMOC.CA)	3.93	Dn.-Corr.	—	—	3.75	4.05	3.55	—	—
Sidi Kerir Petrochemicals (SKPC.CA)	7.22	Up-Corr.	—	—	7.20	7.75	7.20	—	—
Textiles & Clothes									
Arab Co. for asset management & Deve. (ACAMD.CA)	0.437	Bearish	—	—	0.43	0.502	—	—	—
Arab cotton ginning (ACGC.CA)	1.66	Up-Corr.	—	—	1.62	1.778	1.455	—	—
Oriental Weavers (ORWE.CA)	8.31	Dn.-Corr.	—	—	8.05	8.55	7.50	—	—
Other Sectors									
Egyptian Media Production City (MPRC.CA)	4.91	Up-Corr.	—	—	4.75	5.10	4.40	—	—
Egyptian Transport - Egytrans (ETRS.CA)	12.51	Up-Corr.	—	—	12.50	13.60	12.50	—	—
Orascom holding development (ORHD.CA)	5.40	Up-Corr.	—	—	5.10	5.60	4.64	—	—
United Arab Shipping (UASG.CA)	0.907	Bearish	—	—	0.80	0.945	—	—	—

Disclaimer

- This publication has been prepared by Blom Egypt Securities for information purposes only.
- It is not intended as an offer to buy or sell or a solicitation of an offer to buy or sell the securities mentioned.
- The information & opinions in this publication were prepared by Blom Egypt Securities research department accepts no liability or legal responsibility for losses & damages incurred arising from the use of this publication or its contents.

Blom Egypt Securities
Samir M. Azmi, CFTe, CETA
Senior Technical Analyst
samir.azmi@blomsecurities.com



Guidelines for using BLOM daily Technical Analysis Report

<u>Close:</u>	Is recorded as the last trade in the session.
<u>Trend:</u>	
Bullish :	The strategy is to buy the dips.
Bearish :	The strategy is to sell the rallies.
Flat :	The strategy is to trade the range between the triggers.
Up-Corr. :	A move against the major trend when it is down.
Dn.-Corr. :	A move against the major trend when it is up.
<u>Targets :</u>	Take some profit by reducing a portion of the position whenever a price target is been hit.
<u>Support :</u>	A level below market price (previous lows) where buyers showed strength, in a bull market buy near the support and don't sell on the resistance. A break below the Support is considered to be a bearish sign.
<u>Resistance :</u>	A level above market price (previous highs) where sellers showed strength, in a bear market sell near the resistance level and don't buy on the support. A break above the resistance is considered to be a bullish sign.
<u>Stop Loss :</u>	Must exit the current position whenever the closing price is (1% to 2%) below the stop loss and confirmed by volume.
<u>Triggers :</u>	The range between the lower trigger and the upper is used for trading, break of any of them, the move would continue in the same direction.
<u>Yellow rows:</u>	indication that the stock closed below/above support, stop-loss, or resistance but the break is not confirmed yet.

Disclaimer

- This publication has been prepared by Blom Egypt Securities for information purposes only.
- It is not intended as an offer to buy or sell or a solicitation of an offer to buy or sell the securities mentioned.
- The information & opinions in this publication were prepared by Blom Egypt Securities research department accepts no liability or legal responsibility for losses & damages incurred arising from the use of this publication or its contents.

Blom Egypt Securities
Samir M. Azmi, CFTe, CETA
Senior Technical Analyst
samir.azmi@blomsecurities.com