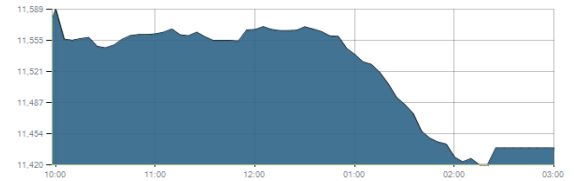




Indices intraday trends

EGX 30

مؤشر EGX 30
اليوم - 13/02/2022

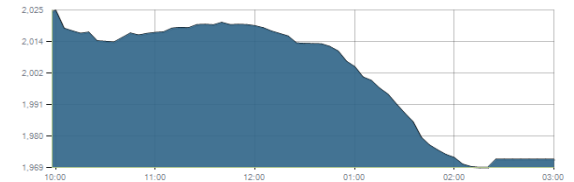


Key Levels

Support 1	11440	Resistance 1	11675
Support 2	11200	Resistance 2	11900

EGX 50 EWI

مؤشر EGX 50 EWI
اليوم - 13/02/2022

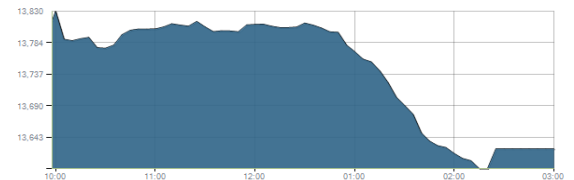


Key Levels

Close		1971.93	
Support 1	1940	Resistance 1	1990
Support 2	1860	Resistance 2	2060

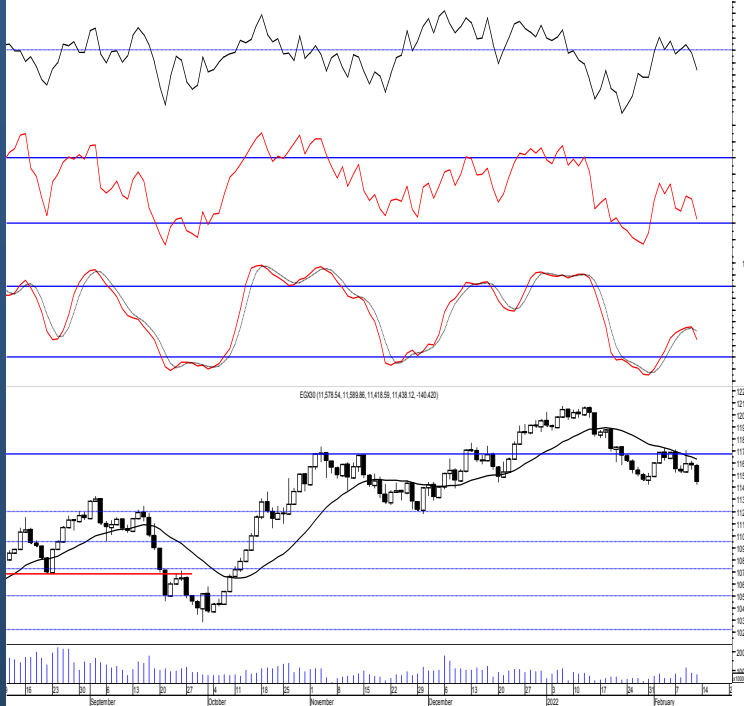
EGX 30 capped

مؤشر EGX 30 Capped
اليوم - 13/02/2022



Key Levels

Close		13625.28	
Support 1	13550	Resistance 1	13800
Support 2	13330	Resistance 2	14150



Market Commentary:

The EGX30 unexpectedly shed further losses as selling pressure strongly dominated pulling the index back reaching the support level 11440 closing slightly below.

2nd day close below will confirm the violation therefore next prominent support level 11200 which also represents the short term stop loss level so stay heads up despite that we still do not expect.

We recommend to be conservative and very selective keeping close stops placed and respected to reduce market risk.

Close	11438.12	Trend	Dn.-Corr.
Pre. Close	11578.54	Target 1	---
Change	↓ 140.42 (1.21%)	Target 2	---
Day's range	11589.86 — 11418.59	Stop-loss	11200
52week's high	12069.23	52week's low	9769.18

Disclaimer

- This publication has been prepared by Blom Egypt Securities for information purposes only.
- It is not intended as an offer to buy or sell or a solicitation of an offer to buy or sell the securities mentioned.
- The information & opinions in this publication were prepared by Blom Egypt Securities research department accepts no liability or legal responsibility for losses & damages incurred arising from the use of this publication or its contents.

Blom Egypt Securities
Samir M. Azmi, CFTe, CETA
Senior Technical Analyst
samir.azmi@blomsecurities.com



Commercial international bank (COMI.CA):

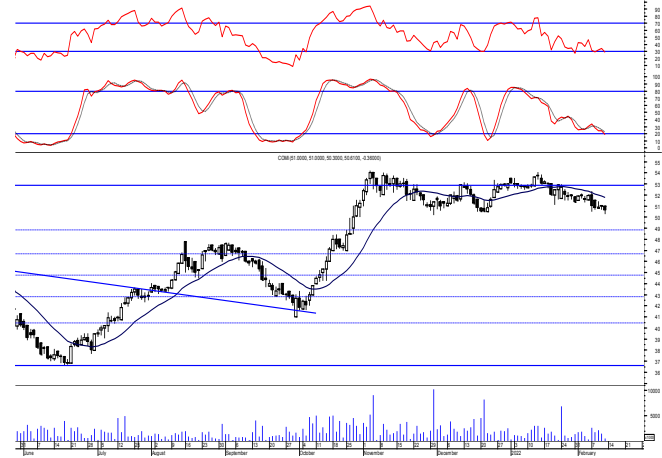
Prices traded lower near the support level 50.20 where rebounding process seemed to take place from closing within the same range keeping everything in place.

Notice that technical indicators are not clear and cannot be anticipated.

We still recommend to wait for a successful breakout to the resistance level 52.80. On the other hand existing positions, hold watching the mentioned supports very carefully.

Support levels: 50.20, 48.80

Resistance levels: 51.60, 52.80

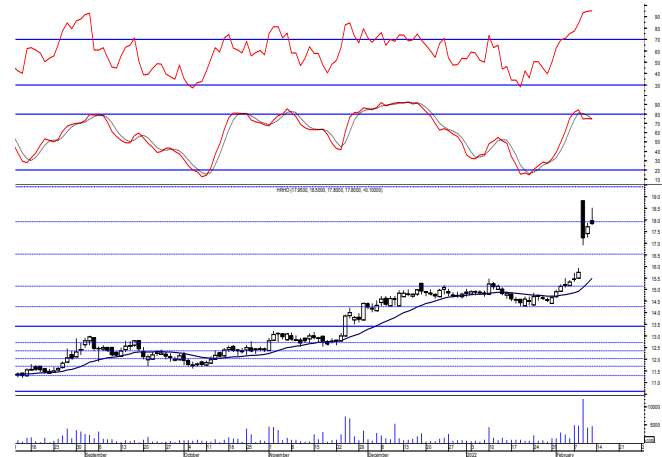


Hermes Holding (HRHO.CA):

Prices closed slightly positive but on the session's low after failing to continue the early rally attempt keeping everything in place. As we said, by breaking this level new bullish targets are set at 19.40 & 20.80 where we may use trading gradually on. It is very important to keep protective stop placed and respected below 17.40.

Support levels: 17.40, 16.35

Resistance levels: 19.40, 20.80



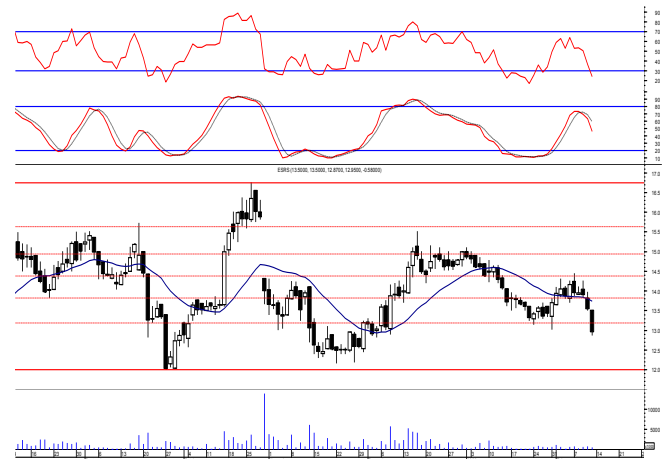
El-Ezz steel rebar's' (ESRS.CA):

Prices dived sharply violating the important support level 13.20 which as we said will have more bearish implications on the coming few session's. Coming support now is 12.00 but still cannot be anticipated.

We recommend stay on cash and wait for a clear confirmed buy signal to react safely on.

Support levels: 12.00, 10.60

Resistance levels: 13.20, 13.80



Disclaimer

- This publication has been prepared by Blom Egypt Securities for information purposes only.
- It is not intended as an offer to buy or sell or a solicitation of an offer to buy or sell the securities mentioned.
- The information & opinions in this publication were prepared by Blom Egypt Securities research department accepts no liability or legal responsibility for losses & damages incurred arising from the use of this publication or its contents.

Blom Egypt Securities
Samir M. Azmi, CFTe, CETA
 Senior Technical Analyst
samir.azmi@blomsecurities.com



Most active Stocks

Daily Technical Analysis Report

14 Feb, 2022

Stock Name (Reuters' Code)	Close	Trend	T1	T2	Support	Resistance	SL	Triggers	
								Lower	Upper
Building Materials & Construction									
Arabian Cement (ARCC.CA)	4.44	Dn.-Corr.	—	—	4.35	4.70	3.60	—	—
GB Auto (AUTO.CA)	5.74	Dn.-Corr.	5.85√	6.55	5.25	5.85	4.35	—	—
El Ezz Steel Rebar's (ESRS.CA)	12.95	Bearish	—	—	12.00	13.20	—	—	—
Orascom Construction (ORAS.CA)	72.00	Dn.-Corr.	—	—	70.50	73.25	70.50	—	—
South Valley Cement (SVCE.CA)	1.338	Bearish	—	—	1.243	1.36	—	—	—
Elswedey Cables (SWDY.CA)	8.60	Dn.-Corr.	—	—	8.60	9.15	8.60	—	—
Upper Egypt General Contracting (UEGC.CA)	0.612	Bearish	—	—	0.57	0.63	—	—	—
Chemicals									
Abu-Qir Fertilizers (ABUK.CA)	20.80	Dn.-Corr.	—	—	20.40	21.00	17.90	—	—
Egyptian Financial & Indust. (EFIC.CA)	13.37	Up-Corr.	—	—	13.10	13.65	12.65	—	—
Egyptian Chemical Industries-Kima (EGCH.CA)	3.56	Up-Corr.	—	—	3.55	3.85	3.40	—	—
Communications									
Telecom Egypt (ETEL.CA)	17.22	Dn.-Corr.	—	—	16.80	17.55	15.80	—	—
Fawry For Banking Tech. & Electronic Payment (FWRY.CA)	8.74	Bearish	—	—	8.80	9.20	—	—	—
Orascom Investment Holding (OIH.CA)	0.22	Up-Corr.	—	—	0.20	0.225	0.20	—	—
Financial Services									
Abu Dhabi International Bank (ADIB.CA)	13.70	Up-Corr.	—	—	13.45	13.90	11.85	—	—
Arabian For Investments & Development (AIH.CA)	0.382	Dn.-Corr.	—	—	0.35	0.385	0.35	—	—
Amer Holding Group (AMER.CA)	0.921	Up-Corr.	—	—	0.925	0.975	0.85	—	—
Credit Agricole (CIEB.CA)	8.16	Dn.-Corr.	—	—	7.80	8.25	7.80	—	—
Commercial International Bank (COMI.CA)	50.61	Dn.-Corr.	—	—	50.20	51.60	50.20	—	—
Export Development Bank Of Egypt (EXPA.CA)	8.97	Up-Corr.	—	—	8.60	9.20	8.60	—	—
Holding Companies									
B Investments Holdings (BINV.CA)	9.97	Up-Corr.	—	—	9.80	10.40	9.80	—	—
Citadel Capital (CCAP.CA)	1.406	Dn.-Corr.	—	—	1.35	1.44	1.30	—	—
Kuwaiti Holding (EKHO.CA)	1.398	Dn.-Corr.	—	—	1.40	1.45	1.305	—	—
Hermes Holding (HRHO.CA)	17.80	Bullish	19.40	20.80	17.40	19.40	15.90	—	—
MM Group For Industry & International Trade (MTIE.CA)	6.50	Bearish	—	—	6.25	6.65	—	—	—
Orascom Financial Holding (OFH.CA)	0.219	Up-Corr.	—	—	0.208	0.23	0.208	—	—
Housing & Real Estate									
Egyptian For Tourism Resorts (EGTS.CA)	1.333	Bearish	—	—	1.27	1.36	—	—	—
El-shams Housing (ELSH.CA)	6.48	Bearish	—	—	6.05	6.65	—	—	—
Emaar Holding (EMFD.CA)	2.91	Bullish	3.00√	3.20	2.80	3.10	2.70	—	—
Heliopolis Housing & Development (HELI.CA)	6.00	Dn.-Corr.	—	—	6.00	6.50	5.70	—	—
Medinet Nasr For Housing & Deve. (MNHD.CA)	2.32	Up-Corr.	—	—	2.22	2.43	2.22	—	—
Palm Hills Development Co. (PHDC.CA)	1.70	Up-Corr.	—	—	1.65	1.75	1.65	—	—
Talaat Mustafa Group Holding (TMGH.CA)	9.81	Bullish	10.05	11.15	8.90	10.05	8.20	—	—
Mining & Gas									
Alexandria Mineral Oils Co. (AMOC.CA)	3.64	Dn.-Corr.	—	—	3.55	3.77	3.33	—	—
Sidi Kerir Petrochemicals (SKPC.CA)	7.22	Up-Corr.	—	—	7.20	7.75	6.30	—	—
Textiles & Clothes									
Arab Co. For Asset Management & Deve. (ACAMD.CA)	0.415	Up-Corr.	—	—	0.42	0.445	0.42	—	—
Arab Cotton Ginning (ACGC.CA)	1.537	Up-Corr.	—	—	1.455	1.585	1.455	—	—
Oriental Weavers (ORWE.CA)	8.27	Dn.-Corr.	—	—	8.07	8.40	8.07	—	—
Other Sectors									
Egyptian Media Production City (MPRC.CA)	4.95	Bearish	—	—	4.80	5.15	—	—	—
Orascom Holding Development (ORHD.CA)	5.40	Up-Corr.	—	—	5.15	5.55	5.15	—	—
Delta Sugar (SUGR.CA)	13.02	Up-Corr.	—	—	12.85	13.30	—	—	—
United Arab Shipping (UASG.CA)	0.745	Up-Corr.	—	—	0.75	0.80	—	—	—

Disclaimer

- This publication has been prepared by Blom Egypt Securities for information purposes only.
- It is not intended as an offer to buy or sell or a solicitation of an offer to buy or sell the securities mentioned.
- The information & opinions in this publication were prepared by Blom Egypt Securities research department accepts no liability or legal responsibility for losses & damages incurred arising from the use of this publication or its contents.

Blom Egypt Securities
Samir M. Azmi, CFTe, CETA
Senior Technical Analyst
samir.azmi@blomsecurities.com



Guidelines for using BLOM daily Technical Analysis Report

Close:

Is recorded as the last trade in the session.

Trend:

Bullish :

The strategy is to buy the dips.

Bearish :

The strategy is to sell the rallies.

Flat :

The strategy is to trade the range between the triggers.

Up-Corr. :

A move against the major trend when it is down.

Dn.-Corr. :

A move against the major trend when it is up.

Targets :

Take some profit by reducing a portion of the position whenever a price target is been hit.

Support :

A level below market price (previous lows) where buyers showed strength, in a bull market buy near the support and don't sell on the resistance. A break below the Support is considered to be a bearish sign.

Resistance :

A level above market price (previous highs) where sellers showed strength, in a bear market sell near the resistance level and don't buy on the support. A break above the resistance is considered to be a bullish sign.

Stop Loss :

Must exit the current position whenever the closing price is (1% to 2%) below the stop loss and confirmed by volume.

Triggers :

The range between the lower trigger and the upper is used for trading, break of any of them, the move would continue in the same direction.

Yellow rows:

indication that the stock closed below/above support, stop-loss, or resistance but the break is not confirmed yet.

Disclaimer

- This publication has been prepared by Blom Egypt Securities for information purposes only.
- It is not intended as an offer to buy or sell or a solicitation of an offer to buy or sell the securities mentioned.
- The information & opinions in this publication were prepared by Blom Egypt Securities research department accepts no liability or legal responsibility for losses & damages incurred arising from the use of this publication or its contents.

Blom Egypt Securities
Samir M. Azmi, CFTe, CETA
Senior Technical Analyst
samir.azmi@blomsecurities.com