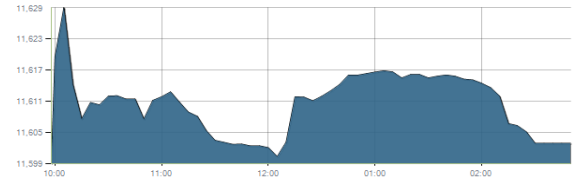




Indices intraday trends

EGX 30

مؤشر EGX 30  
اليوم - 07/02/2021

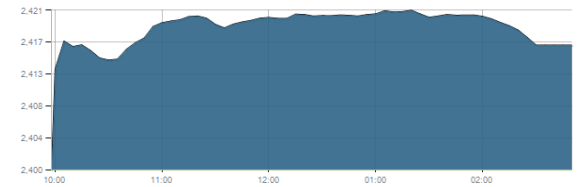


Key Levels

Support 1	11500-11450	Resistance 1	11850
Support 2	11230	Resistance 2	12200

EGX 50 EWI

مؤشر EGX 50 EWI  
اليوم - 07/02/2021

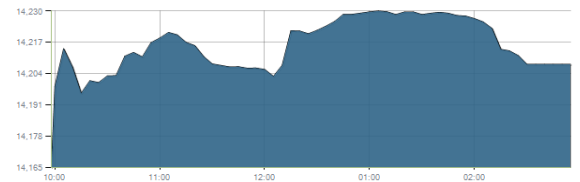


Key Levels

Close		2416.54	
Support 1	2360	Resistance 1	2430
Support 2	2300	Resistance 2	2600

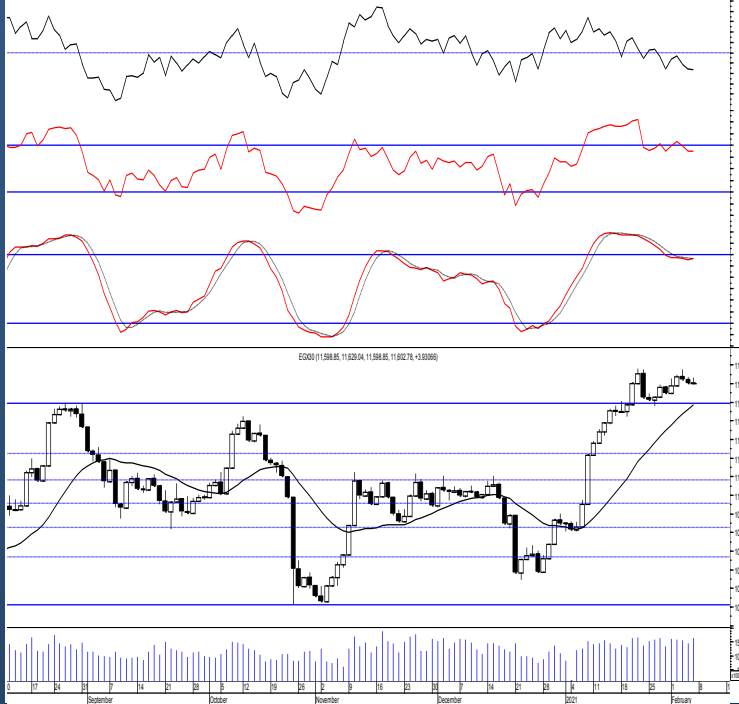
EGX 30 capped

مؤشر EGX 30 Capped  
اليوم - 07/02/2021



Key Levels

Close		14207.75	
Support 1	14200	Resistance 1	14750
Support 2	13850	Resistance 2	15400



Market Commentary:

The EGX30 remained narrowly flat closing slightly positive as balanced trading performance dominated keeping everything in place. Yet, the decline is considered only a correction to the previous rally where we believe we can buy gradually on bearing in mind that the mentioned support zone should be respected. As we said, by clearing the mentioned zone the medium term trend now is up setting new target levels at 11850 & 12200. New positions now may safely be opened while existing positions are advised to use trailing stop strategy and may add to their positions using the mentioned target levels to trade gradually on.

Close	11602.78	Trend	Bullish
Pre. Close	11598.85	Target 1	11450 ✓
Change	↑ 3.93 ( 0.03% )	Target 2	11850
Day's range	11598.85 — 11629.04	Stop-loss	11230
52week's high	14831.20	52week's low	8113.82

Disclaimer

- This publication has been prepared by Blom Egypt Securities for information purposes only.
- It is not intended as an offer to buy or sell or a solicitation of an offer to buy or sell the securities mentioned.
- The information & opinions in this publication were prepared by Blom Egypt Securities research department accepts no liability or legal responsibility for losses & damages incurred arising from the use of this publication or its contents.

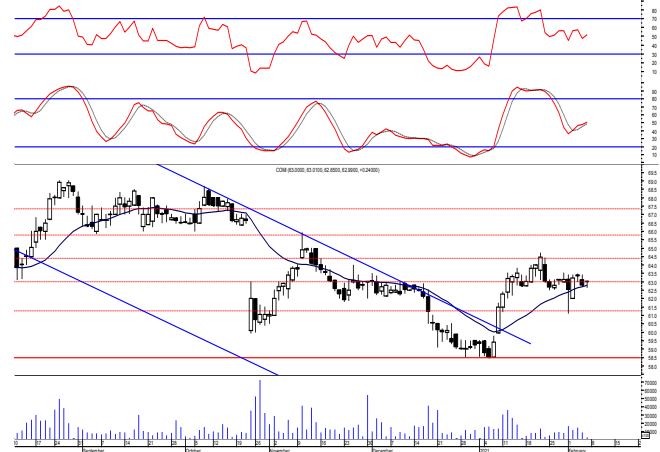
**Blom Egypt Securities**  
Samir M. Azmi, CFTe, CETA  
Senior Technical Analyst  
samir.azmi@blomsecurities.com



**Commercial international bank (COMI.CA):**

Prices remained fluctuating around the support level 63.00 closing slightly below but still needs confirmation so levels are unchanged and so for our outlook. Yet our view is still positive as technical indicators remained bullish suggesting that the next target and resistance will be reached where we may continue trading on. Protective stop should be placed below 60.00.

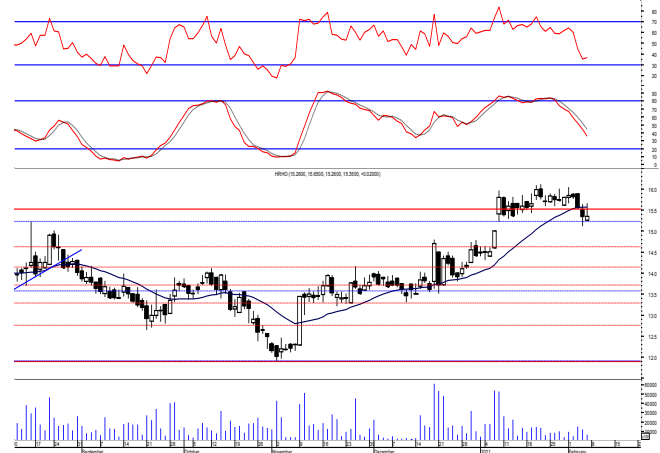
Support levels: 63.00, 60.00  
Resistance levels: 64.50, 66.00



**Hermes Holding (HRHO.CA):**

Prices closed slightly negative within the support zone after quiet trading performance leaving our outlook the same. Notice that it is very important to defend the mentioned zone to prove that buyers are still in control. New target zone within 16.60-17.10 where we believe it represents strong retracement level where may use trade on. Close stops should always be placed and respected to protect the downside.

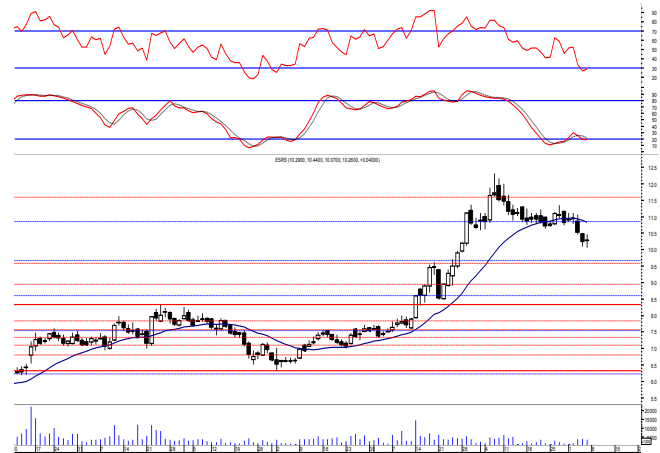
Support levels: 15.55-15.25, 14.60  
Resistance levels: 16.60-17.10, 17.80



**El-Ezz steel rebar's' (ESRS.CA):**

Prices witnessed a rebounding attempt but selling pressure remained evident closing nearer the session's low leaving levels unchanged and so for our outlook. As we said, confirming below the mentioned support triggers an opposite trade opportunity where we can sell and buy near the next support.

Support levels: 9.80, 8.90  
Resistance levels: 10.60, 10.90



**Disclaimer**

- This publication has been prepared by Blom Egypt Securities for information purposes only.
- It is not intended as an offer to buy or sell or a solicitation of an offer to buy or sell the securities mentioned.
- The information & opinions in this publication were prepared by Blom Egypt Securities research department accepts no liability or legal responsibility for losses & damages incurred arising from the use of this publication or its contents.

**Blom Egypt Securities**  
**Samir M. Azmi, CFTe, CETA**  
**Senior Technical Analyst**  
[samir.azmi@blomsecurities.com](mailto:samir.azmi@blomsecurities.com)



Most active Stocks

Daily Technical Analysis Report

8 Feb, 2021

Stock Name (Reuters' Code)	Close	Trend	T1	T2	Support	Resistance	SL	Triggers	
								Lower	Upper
<b>Building Materials &amp; Construction</b>									
Arabian cement (ARCC.CA)	3.43	Dn.-Corr.	—	—	3.40	3.60	3.00	—	—
El Ezz Steel Rebar's (ESRS.CA)	10.26	Bearish	—	—	9.80	10.60	—	—	—
GB auto (AUTO.CA)	3.79	Dn.-Corr.	—	—	3.50	3.77	2.95	—	—
Orascom construction (ORAS.CA)	96.00	Bullish	102.00√	109.00	96.00	102.00	81.00	—	—
South Valley Cement (SVCE.CA)	1.925	Up-Corr.	—	—	1.88	2.00	1.58	—	—
Elsweddy Cables (SWDY.CA)	10.20	Bullish	10.75	11.15	10.10	11.15	9.60	—	—
Upper Egypt general contracting (UEGC.CA)	1.217	Bullish	1.18√	1.35	1.17	1.35	0.995	—	—
<b>Chemicals</b>									
Abu-Qir fertilizers (ABUK.CA)	22.50	Dn.-Corr.	—	—	22.30	23.00	19.20	—	—
Egyptian Financial & Indust. (EFIC.CA)	12.50	Up-Corr.	—	—	11.85	12.80	11.10	—	—
Egyptian chemical industries-Kima (EGCH.CA)	4.20	Up-Corr.	—	—	4.20	4.47	3.80	—	—
<b>Communications</b>									
Orascom investment holding (OIH.CA)	0.617	Bullish	0.64	0.68	0.59	0.64	0.55	—	—
Telecom Egypt (ETEL.CA)	11.50	Up-Corr.	—	—	11.40	11.90	11.40	—	—
<b>Financial Services</b>									
Abu Dhabi International Bank (ADIB.CA)	12.42	Dn.-Corr.	—	—	12.10	12.50	11.20	—	—
Arabian for investments & development (AIH.CA)	0.642	Dn.-Corr.	—	—	0.59	0.645	0.59	—	—
Amer holding group (AMER.CA)	1.247	Dn.-Corr.	—	—	1.14	1.25	0.98	—	—
Commercial International Bank (COMI.CA)	62.99	Up-Corr.	—	—	63.00	64.50	58.50	—	—
Export development bank of Egypt (EXPA.CA)	14.45	Up-Corr.	—	—	14.00	14.60	13.30	—	—
<b>Holding Companies</b>									
CI capital holding for financial investments (CICH.CA)	4.15	Bullish	4.20√	4.50	4.00	4.37	3.70	—	—
Citadel capital (CCAP.CA)	1.586	Up-Corr.	—	—	1.53	1.60	1.39	—	—
Hermes Holding (HRHO.CA)	15.35	Bullish	16.60	17.80	15.20	17.10	14.60	—	—
Kuwaiti Holding (EKHO.CA)	1.08	Up-Corr.	—	—	1.03	1.09	0.94	—	—
MM group for industry & international trade (MTIE.CA)	8.85	Dn.-Corr.	—	—	8.70	9.20	8.70	—	—
Pioneers holding (PIOH.CA)	5.55	Bullish	5.95	6.30	5.40	5.95	4.45	—	—
<b>Housing &amp; Real Estate</b>									
Egyptian For Tourism Resorts (EGTS.CA)	1.643	Up-Corr.	—	—	1.60	1.77	1.45	—	—
Elshams housing (ELSH.CA)	5.31	Dn.-Corr.	—	—	5.30	5.70	4.85	—	—
Emaar holding (EMFD.CA)	2.65	Dn.-Corr.	—	—	2.63	2.70	2.45	—	—
Heliopolis housing & development (HELL.CA)	5.84	Up-Corr.	—	—	5.50	5.90	5.50	—	—
Medinet Nasr for housing & Deve. (MNHD.CA)	3.93	Up-Corr.	—	—	3.80	3.97	3.75	—	—
6th. October Deve. Inv. (OCDI.CA)	15.60	Flat	—	—	—	—	13.90	15.15	16.20
Palm hills development Co. (PHDC.CA)	1.74	Bullish	1.86	2.00	1.70	1.86	1.53	—	—
Talaat Mustafa group holding (TMGH.CA)	7.25	Bullish	7.75	8.20	7.30	7.75	6.30	—	—
<b>Mining &amp; Gas</b>									
Alexandria Mineral Oils Co. (AMOC.CA)	3.29	Dn.-Corr.	—	—	3.13	3.37	3.00	—	—
Sidi Kerir Petrochemicals (SKPC.CA)	10.25	Dn.-Corr.	—	—	9.80	10.60	9.20	—	—
<b>Textiles &amp; Clothes</b>									
Arab Co. for asset management & Deve. (ACAMD.CA)	5.85	Up-Corr.	—	—	5.50	5.90	4.65	—	—
Arab cotton ginning (ACGC.CA)	3.28	Up-Corr.	—	—	3.20	3.45	2.85	—	—
Oriental Weavers (ORWE.CA)	6.86	Up-Corr.	—	—	6.50	7.00	6.50	—	—
<b>Other Sectors</b>									
Egyptian Media Production City (MPRC.CA)	8.20	Up-Corr.	—	—	7.45	8.20	5.40	—	—
Egyptian Transport - Egytrans (ETRS.CA)	10.79	Up-Corr.	—	—	10.50	11.00	9.90	—	—
Orascom holding development (ORHD.CA)	5.04	Dn.-Corr.	—	—	4.85	5.35	4.45	—	—
United Arab Shipping (UASG.CA)	1.20	Dn.-Corr.	—	—	1.125	1.22	1.05	—	—

Disclaimer

- This publication has been prepared by Blom Egypt Securities for information purposes only.
- It is not intended as an offer to buy or sell or a solicitation of an offer to buy or sell the securities mentioned.
- The information & opinions in this publication were prepared by Blom Egypt Securities research department accepts no liability or legal responsibility for losses & damages incurred arising from the use of this publication or its contents.

**Blom Egypt Securities**  
Samir M. Azmi, CFTe, CETA  
Senior Technical Analyst  
samir.azmi@blomsecurities.com



**Guidelines for using BLOM daily Technical Analysis Report**

**Close:**

Is recorded as the last trade in the session.

**Trend:**

**Bullish :**

The strategy is to buy the dips.

**Bearish :**

The strategy is to sell the rallies.

**Flat :**

The strategy is to trade the range between the triggers.

**Up-Corr. :**

A move against the major trend when it is down.

**Dn.-Corr. :**

A move against the major trend when it is up.

**Targets :**

Take some profit by reducing a portion of the position whenever a price target is been hit.

**Support :**

A level below market price (previous lows) where buyers showed strength, in a bull market buy near the support and don't sell on the resistance. A break below the Support is considered to be a bearish sign.

**Resistance :**

A level above market price (previous highs) where sellers showed strength, in a bear market sell near the resistance level and don't buy on the support. A break above the resistance is considered to be a bullish sign.

**Stop Loss :**

Must exit the current position whenever the closing price is (1% to 2%) below the stop loss and confirmed by volume.

**Triggers :**

The range between the lower trigger and the upper is used for trading, break of any of them, the move would continue in the same direction.

**Yellow rows:**

indication that the stock closed below/above support, stop-loss, or resistance but the break is not confirmed yet.

**Disclaimer**

- This publication has been prepared by Blom Egypt Securities for information purposes only.
- It is not intended as an offer to buy or sell or a solicitation of an offer to buy or sell the securities mentioned.
- The information & opinions in this publication were prepared by Blom Egypt Securities research department accepts no liability or legal responsibility for losses & damages incurred arising from the use of this publication or its contents.

**Blom Egypt Securities**  
**Samir M. Azmi, CFTe, CETA**  
**Senior Technical Analyst**  
**samir.azmi@blomsecurities.com**