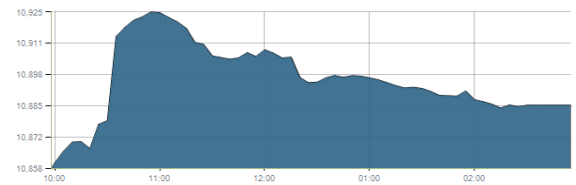




Indices intraday trends

EGX 30

مؤشر EGX 30
اليوم - 23/11/2020

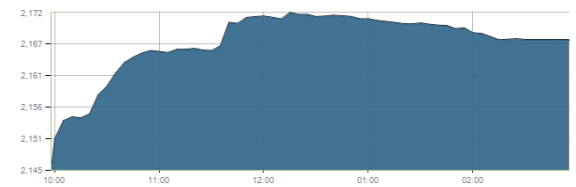


Key Levels

Support 1	10750	Resistance 1	10900-11100
Support 2	10550	Resistance 2	11500

EGX 50 EWI

مؤشر EGX 50 EWI
اليوم - 23/11/2020

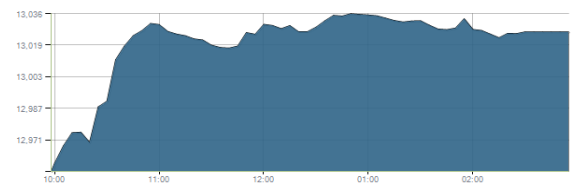


Key Levels

Close		2167.33	
Support 1	2130	Resistance 1	2200
Support 2	2055	Resistance 2	2300

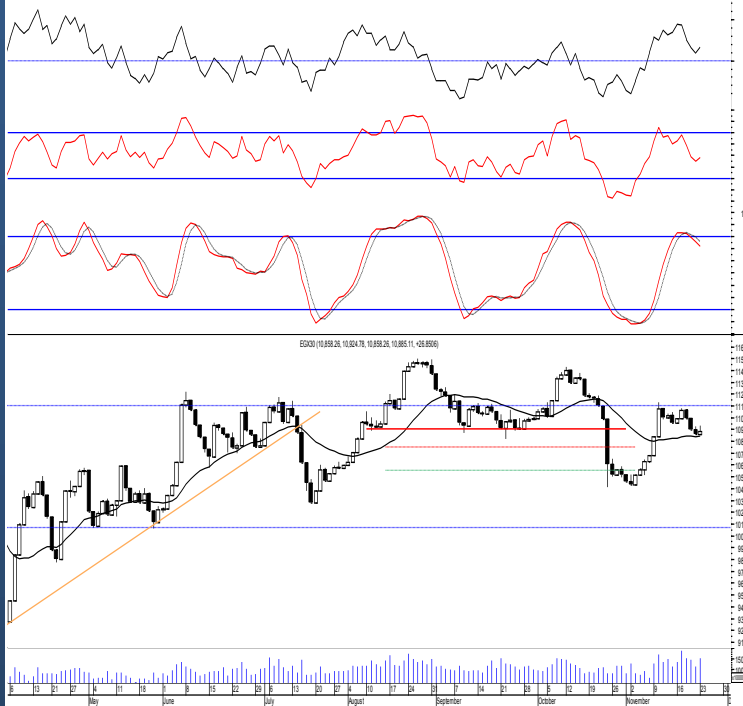
EGX 30 capped

مؤشر EGX 30 Capped
اليوم - 23/11/2020



Key Levels

Close		13026.31	
Support 1	12790	Resistance 1	13035
Support 2	12460	Resistance 2	13455



Market Commentary:

The EGX30 witnessed another failure attempt to break above 10900 reconfirming that the bears gained the near term technical advantage.

As we said, by confirming below the mentioned level further decline is now expected near the coming supports Thus we recommend to stay on cash till a confirmed buy signal is triggered.

Risk takers who decides holding their positons are advised to keep close stops placed and respected..

Close	10885.11	Trend	Up-Corr.
Pre. Close	10858.26	Target 1	---
Change	↑ 26.85 (0.25%)	Target 2	---
Day's range	10858.26 — 10924.78	Stop-loss	10425
52week's high	14831.20	52week's low	8113.82

Disclaimer

- This publication has been prepared by Blom Egypt Securities for information purposes only.
- It is not intended as an offer to buy or sell or a solicitation of an offer to buy or sell the securities mentioned.
- The information & opinions in this publication were prepared by Blom Egypt Securities research department accepts no liability or legal responsibility for losses & damages incurred arising from the use of this publication or its contents.

Blom Egypt Securities
Samir M. Azmi, CFTe, CETA
Senior Technical Analyst
samir.azmi@blomsecurities.com



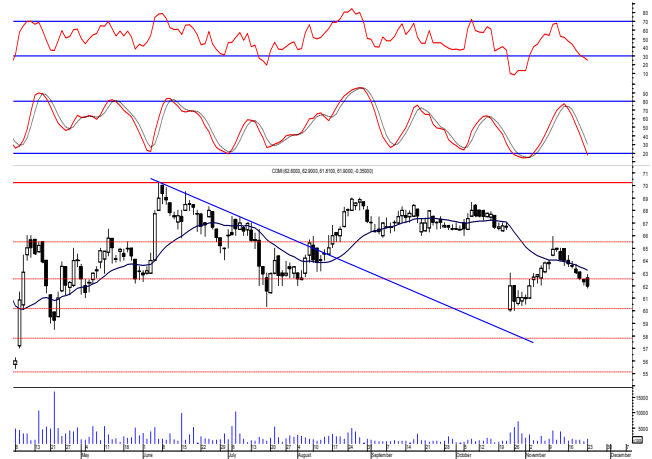
Commercial international bank (COMI.CA):

Prices remained under stress failing to continue the early rally attempt closing near the session's low indicating further decline which is expected to reach the coming mentioned support level..

levels are still the same 63.00 & 60.00. We still recommend traded positions to stay on cash and wait for a confirmed buy signal to react safely on.

While held positions are advised to activate their stops and stay on cash.

Support levels: 60.00, 58.50
Resistance levels: 63.00, 66.00



Hermes Holding (HRHO.CA):

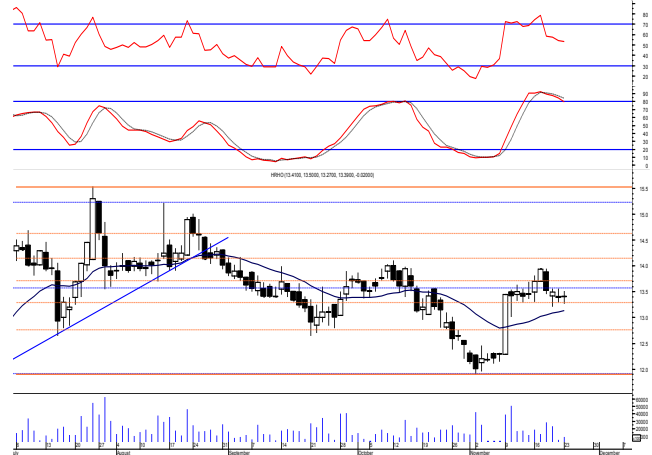
Prices remained narrowly flat after quiet trading performance closing slightly negative.

We still recommend to stay on cash and wait for a confirmed buy signal to react safely on.

Buyers will confirm their strength by only clearing the resistance level 14.10.

Any held positions should watch the mentioned support as it represents an important defensive line.

Support levels: 12.65, 11.90
Resistance levels: 13.50, 14.10

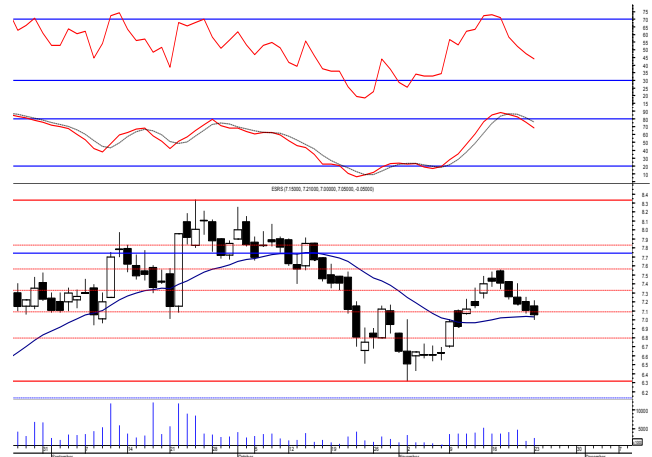


El-Ezz steel rebar's' (ESRS.CA):

Prices closed slightly negative after quiet balanced performance keeping levels unchanged and so for our outlook.

Short term trades opened recently are advised to use the mentioned resistance zone to close on. While any held positions to keep close stops placed and respected.

Support levels: 7.00, 6.40
Resistance levels: 7.55-7.75, 8.30



Disclaimer

- This publication has been prepared by Blom Egypt Securities for information purposes only.
- It is not intended as an offer to buy or sell or a solicitation of an offer to buy or sell the securities mentioned.
- The information & opinions in this publication were prepared by Blom Egypt Securities research department accepts no liability or legal responsibility for losses & damages incurred arising from the use of this publication or its contents.

Blom Egypt Securities
Samir M. Azmi, CFTe, CETA
Senior Technical Analyst
samir.azmi@blomsecurities.com



بلوم مصر لتداول الأوراق المالية

BLOM EGYPT SECURITIES



Most active Stocks

Daily Technical Analysis Report

24 Nov, 2020

Stock Name (Reuters' Code)	Close	Trend	T1	T2	Support	Resistance	SL	Triggers	
								Lower	Upper
Building Materials & Construction									
Arabian cement (ARCC.CA)	3.15	Up-Corr.	—	—	2.95	3.15	2.75	—	—
El Ezz Steel Rebar's (ESRS.CA)	7.05	Up-Corr.	—	—	7.00	7.75	6.40	—	—
Egyptian iron & steel; Co. (IRON.CA)	3.17	Dn.-Corr.	—	—	3.00	3.20	2.80	—	—
GB auto (AUTO.CA)	3.20	Bullish	3.32√	3.57	3.10	3.32	2.80	—	—
Orascom construction (ORAS.CA)	82.40	Bullish	81.00√	85.50	81.00	85.50	67.50	—	—
South Valley Cement (SVCE.CA)	1.725	Up-Corr.	—	—	1.65	1.77	1.48	—	—
Elsweddy Cables (SWDY.CA)	8.65	Bullish	8.95	9.30	8.50	9.30	7.75	—	—
Upper Egypt general contracting (UEGC.CA)	0.835	Up-Corr.	—	—	0.80	0.855	0.74	—	—
Chemicals									
Abu-Qir fertilizers (ABUK.CA)	19.80	Bullish	20.50	21.60	19.60	20.50	17.90	—	—
Egyptian Financial & Indust. (EFIC.CA)	10.84	Up-Corr.	—	—	10.60	11.15	9.80	—	—
Egyptian chemical industries-Kima (EGCH.CA)	4.15	Up-Corr.	—	—	4.00	4.20	3.80	—	—
Communications									
Orascom investment holding (OIH.CA)	0.555	Up-Corr.	—	—	0.517	0.555	0.49	—	—
Telecom Egypt (ETEL.CA)	12.87	Up-Corr.	—	—	12.20	13.00	11.40	—	—
Financial Services									
Abu Dhabi International Bank (ADIB.CA)	11.50	Dn.-Corr.	—	—	11.20	12.10	10.60	—	—
Arabian for investments & development (AIH.CA)	0.527	Up-Corr.	—	—	0.49	0.537	0.363	—	—
Amer holding group (AMER.CA)	0.716	Dn.-Corr.	—	—	0.705	0.74	0.62	—	—
Commercial International Bank (COMI.CA)	61.90	Up-Corr.	—	—	60.00	63.00	60.00	—	—
Export development bank of Egypt (EXPA.CA)	14.97	Flat	—	—	—	—	14.35	14.35	15.90
Holding Companies									
CI capital holding for financial investments (CICH.CA)	3.73	Up-Corr.	—	—	3.70	3.95	3.25	—	—
Citadel capital (CCAP.CA)	1.419	Up-Corr.	—	—	1.39	1.47	1.39	—	—
Hermes Holding (HRHO.CA)	13.39	Up-Corr.	—	—	12.65	13.50	11.90	—	—
Kuwaiti Holding (EKHO.CA)	1.045	Flat	—	—	—	—	0.97	1.03	1.10
Pioneers holding (PIOH.CA)	4.22	Up-Corr.	—	—	4.10	4.38	3.70	—	—
Housing & Real Estate									
Egyptian For Tourism Resorts (EGTS.CA)	1.384	Up-Corr.	—	—	1.30	1.45	1.25	—	—
Elshams housing (ELSH.CA)	5.05	Up-Corr.	—	—	5.05	5.35	4.15	—	—
Emaar holding (EMFD.CA)	2.46	Up-Corr.	—	—	2.38	2.47	2.13	—	—
Heliopolis housing & development (HELL.CA)	7.10	Dn.-Corr.	—	—	6.90	7.20	5.90	—	—
Medinet Nasr for housing & Deve. (MNHD.CA)	3.97	Up-Corr.	—	—	3.90	4.25	3.45	—	—
6th. October Deve. Inv. (OCDI.CA)	14.99	Bullish	14.80√	15.80	14.80	15.80	12.40	—	—
Palm hills development Co. (PHDC.CA)	1.352	Up-Corr.	—	—	1.27	1.40	1.18	—	—
Talaat Mustafa group holding (TMGH.CA)	7.00	Up-Corr.	—	—	6.80	7.30	6.30	—	—
Mining & Gas									
Alexandria Mineral Oils Co. (AMOC.CA)	2.53	Up-Corr.	—	—	2.45	2.60	2.30	—	—
Sidi Kerir Petrochemicals (SKPC.CA)	8.08	Up-Corr.	—	—	7.70	8.10	6.80	—	—
Textiles & Clothes									
Arab Co. for asset management & Deve. (ACAMD.CA)	6.76	Bullish	6.75√	7.30	6.15	7.30	5.10	—	—
Arab cotton ginning (ACGC.CA)	3.16	Up-Corr.	—	—	3.05	3.25	2.40	—	—
Oriental Weavers (ORWE.CA)	7.50	Bullish	7.45√	7.90√	7.45	7.90	7.00	—	—
Other Sectors									
Egyptian Media Production City (MPRC.CA)	6.11	Up-Corr.	—	—	5.65	6.50	5.40	—	—
Egyptian Transport - Egytrans (ETRS.CA)	10.95	Up-Corr.	—	—	11.00	11.70	9.10	—	—
Orascom holding development (ORHD.CA)	4.66	Up-Corr.	—	—	4.45	4.90	3.75	—	—
United Arab Shipping (UASG.CA)	1.17	Up-Corr.	—	—	1.17	1.35	0.90	—	—

Disclaimer

- This publication has been prepared by Blom Egypt Securities for information purposes only.
- It is not intended as an offer to buy or sell or a solicitation of an offer to buy or sell the securities mentioned.
- The information & opinions in this publication were prepared by Blom Egypt Securities research department accepts no liability or legal responsibility for losses & damages incurred arising from the use of this publication or its contents.

Blom Egypt Securities
Samir M. Azmi, CFTe, CETA
Senior Technical Analyst
samir.azmi@blomsecurities.com



Guidelines for using BLOM daily Technical Analysis Report

<u>Close:</u>	Is recorded as the last trade in the session.
<u>Trend:</u>	
Bullish :	The strategy is to buy the dips.
Bearish :	The strategy is to sell the rallies.
Flat :	The strategy is to trade the range between the triggers.
Up-Corr. :	A move against the major trend when it is down.
Dn.-Corr. :	A move against the major trend when it is up.
<u>Targets :</u>	Take some profit by reducing a portion of the position whenever a price target is been hit.
<u>Support :</u>	A level below market price (previous lows) where buyers showed strength, in a bull market buy near the support and don't sell on the resistance. A break below the Support is considered to be a bearish sign.
<u>Resistance :</u>	A level above market price (previous highs) where sellers showed strength, in a bear market sell near the resistance level and don't buy on the support. A break above the resistance is considered to be a bullish sign.
<u>Stop Loss :</u>	Must exit the current position whenever the closing price is (1% to 2%) below the stop loss and confirmed by volume.
<u>Triggers :</u>	The range between the lower trigger and the upper is used for trading, break of any of them, the move would continue in the same direction.
<u>Yellow rows:</u>	indication that the stock closed below/above support, stop-loss, or resistance but the break is not confirmed yet.

Disclaimer

- This publication has been prepared by Blom Egypt Securities for information purposes only.
- It is not intended as an offer to buy or sell or a solicitation of an offer to buy or sell the securities mentioned.
- The information & opinions in this publication were prepared by Blom Egypt Securities research department accepts no liability or legal responsibility for losses & damages incurred arising from the use of this publication or its contents.

Blom Egypt Securities
Samir M. Azmi, CFTe, CETA
Senior Technical Analyst
samir.azmi@blomsecurities.com