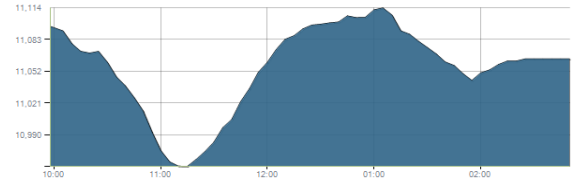


Indices intraday trends

EGX 30

مؤشر EGX 30  
اليوم - 06/09/2021

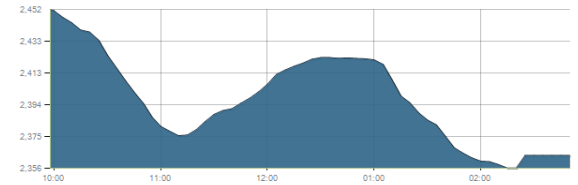


Key Levels

|           |             |              |       |
|-----------|-------------|--------------|-------|
| Support 1 | 10950-10850 | Resistance 1 | 11200 |
| Support 2 | 10680       | Resistance 2 | 11430 |

EGX 50 EWI

مؤشر EGX 50 EWI  
اليوم - 06/09/2021

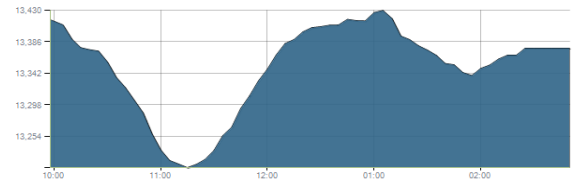


Key Levels

|           |      |              |      |
|-----------|------|--------------|------|
| Close     |      | 2363.31      |      |
| Support 1 | 2310 | Resistance 1 | 2385 |
| Support 2 | 2240 | Resistance 2 | 2450 |

EGX 30 capped

مؤشر EGX 30 Capped  
اليوم - 06/09/2021



Key Levels

|           |       |              |       |
|-----------|-------|--------------|-------|
| Close     |       | 13377.47     |       |
| Support 1 | 13130 | Resistance 1 | 13400 |
| Support 2 | 12940 | Resistance 2 | 13800 |

Market Commentary:

The EGX30 confirmed violating the support level 11200 after failing to recover from the early sharp decline despite gaining most of the early losses and trading in green.

As we said, the violation of the mentioned level will likely have a negative impact on the market which in turn leads to the coming support zone.

The upside expectations will only be by clearing 11200 so it is very important to watch any violated stop to avoid any further decline while new positions are advised to wait for a confirmed buy signal to react safely on.

|               |                     |              |            |
|---------------|---------------------|--------------|------------|
| Close         | 11064.17            | Trend        | Up-Corr.   |
| Pre. Close    | 11095.89            | Target 1     | ---        |
| Change        | ↓ 31.72 ( 0.29% )   | Target 2     | ---        |
| Day's range   | 11114.42 — 10954.76 | Stop-loss    | 10680      |
| 52week's high | 11675.69            | 52week's low | 9769.18.18 |

Disclaimer

- This publication has been prepared by Blom Egypt Securities for information purposes only.
- It is not intended as an offer to buy or sell or a solicitation of an offer to buy or sell the securities mentioned.
- The information & opinions in this publication were prepared by Blom Egypt Securities research department accepts no liability or legal responsibility for losses & damages incurred arising from the use of this publication or its contents.

**Blom Egypt Securities**  
Samir M. Azmi, CFTe, CETA  
Senior Technical Analyst  
samir.azmi@blomsecurities.com

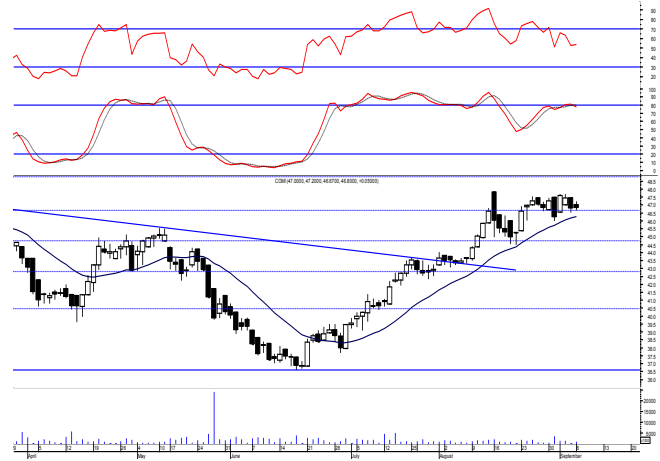


**Commercial international bank (COMI.CA):**

Prices remained quietly flat closing slightly positive as balanced trading performance dominated leaving levels unchanged and so for our outlook. Defending the support level 46.65 keeps the view positive and will lead to climbing to the old targets at 48.80 & 51.60.

Trailing stop strategy should be followed to protect profits and reduce risk

Support levels: 46.65, 44.70  
Resistance levels: 48.80, 51.60

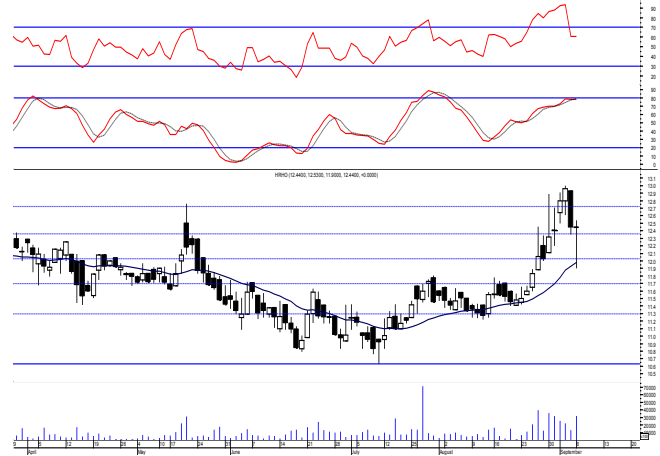


**Hermes Holding (HRHO.CA):**

Prices closed with no change below our mentioned support but this time trading volumes increased which confirms the violation turning it into resistance suggesting further decline. An opposite trading could be tried on current levels keeping close protective stops.

Existing positions are advised to hold keeping stops placed and respected below 11.25 as any decline below will give back the hand to selling party.

Support levels: 12.10, 11.70  
Resistance levels: (12.60-12.75), (13.25-13.40)

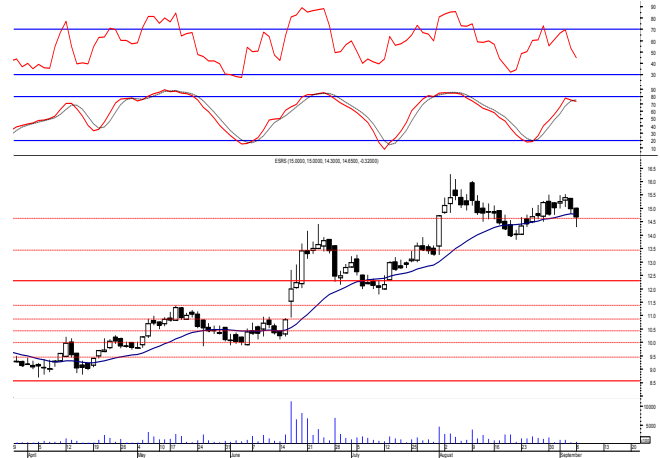


**El-Ezz steel rebar's' (ESRS.CA):**

Prices remained flat within our mentioned support zone closing on it's upper boundary leaving levels unchanged and so for our outlook.

We recommend watching the mentioned zone as bullish sentiment will remain intact which as we said will likely push prices higher to retest the previous reached high 16.25 where we may use the range for quick trading. Protective stop should be placed below 14.40.

Support levels: (14.65-14.40), 13.40  
Resistance levels: 16.00, 17.70



**Disclaimer**

- This publication has been prepared by Blom Egypt Securities for information purposes only.
- It is not intended as an offer to buy or sell or a solicitation of an offer to buy or sell the securities mentioned.
- The information & opinions in this publication were prepared by Blom Egypt Securities research department accepts no liability or legal responsibility for losses & damages incurred arising from the use of this publication or its contents.

**Blom Egypt Securities**  
**Samir M. Azmi, CFTe, CETA**  
**Senior Technical Analyst**  
**samir.azmi@blomsecurities.com**



Most active Stocks

Daily Technical Analysis Report

7 Sep, 2021

| Stock Name (Reuters' Code)                            | Close | Trend     | T1     | T2    | Support | Resistance | SL    | Triggers |       |
|---|-------|-----------|--------|-------|---------|------------|-------|----------|-------|
|   |       |           |        |       |         |            |       | Lower    | Upper |
| <b>Building Materials &amp; Construction</b>          |       |           |        |       |         |            |       |          |       |
| Arabian cement (ARCC.CA)                              | 4.20  | Bearish   | —      | —     | 4.10    | 4.60       | —     | —        | —     |
| El Ezz Steel Rebar's (ESRS.CA)                        | 14.65 | Dn.-Corr. | —      | —     | 14.40   | 16.00      | 11.40 | —        | —     |
| GB auto (AUTO.CA)                                     | 3.95  | Bullish   | 4.20√  | 4.45  | 3.95    | 4.20       | 3.75  | —        | —     |
| Orascom construction (ORAS.CA)                        | 75.00 | Bullish   | 78.25√ | 81.85 | 74.80   | 78.25      | 68.50 | —        | —     |
| South Valley Cement (SVCE.CA)                         | 2.08  | Dn.-Corr. | —      | —     | 1.95    | 2.20       | 1.95  | —        | —     |
| Elsweddy Cables (SWDY.CA)                             | 8.40  | UP-Corr.  | —      | —     | 8.25    | 8.65       | 7.40  | —        | —     |
| Upper Egypt general contracting (UEGC.CA)             | 0.794 | Dn.-Corr. | —      | —     | 0.79    | 0.83       | 0.73  | —        | —     |
| <b>Chemicals</b>                                      |       |           |        |       |         |            |       |          |       |
| Abu-Qir fertilizers (ABUK.CA)                         | 18.61 | Up-Corr.  | —      | —     | 18.30   | 19.70      | 18.30 | —        | —     |
| Egyptian Financial & Indust. (EFIC.CA)                | 13.32 | Dn.-Corr. | —      | —     | 12.85   | 14.00      | 12.85 | —        | —     |
| Egyptian chemical industries-Kima (EGCH.CA)           | 4.43  | Dn.-Corr. | 4.45√  | 4.95√ | 4.45    | 4.95       | 3.75  | —        | —     |
| <b>Communications</b>                                 |       |           |        |       |         |            |       |          |       |
| Orascom investment holding (OIH.CA)                   | 0.22  | Dn.-Corr. | —      | —     | 0.215   | 0.235      | 0.192 | —        | —     |
| Telecom Egypt (ETEL.CA)                               | 14.40 | Dn.-Corr. | 15.20√ | 16.60 | 14.30   | 15.70      | 12.90 | —        | —     |
| <b>Financial Services</b>                             |       |           |        |       |         |            |       |          |       |
| Abu Dhabi International Bank (ADIB.CA)                | 14.23 | Bearish   | —      | —     | 13.80   | 14.80      | —     | —        | —     |
| Arabian for investments & development (AIH.CA)        | 0.435 | Bearish   | —      | —     | 0.403   | 0.44       | —     | —        | —     |
| Amer holding group (AMER.CA)                          | 0.871 | Up-Corr.  | —      | —     | 0.845   | 0.90       | 0.78  | —        | —     |
| Commercial International Bank (COMI.CA)               | 46.80 | Bullish   | 48.80  | 51.60 | 46.65   | 48.80      | 42.30 | —        | —     |
| Export development bank of Egypt (EXPA.CA)            | 11.29 | Dn.-Corr. | —      | —     | 11.20   | 11.65      | 9.90  | —        | —     |
| <b>Holding Companies</b>                              |       |           |        |       |         |            |       |          |       |
| Citadel capital (CCAP.CA)                             | 1.206 | Up-Corr.  | —      | —     | 1.16    | 1.23       | 1.09  | —        | —     |
| Hermes Holding (HRHO.CA)                              | 12.44 | Dn.-Corr. | —      | —     | 12.10   | 12.75      | 11.25 | —        | —     |
| Kuwaiti Holding (EKHO.CA)                             | 1.125 | Bullish   | 1.13√  | 1.19  | 1.06    | 1.15       | 0.96  | —        | —     |
| MM group for industry & international trade (MTIE.CA) | 7.40  | Dn.-Corr. | —      | —     | 7.30    | 7.80       | 7.30  | —        | —     |
| Orascom financial holding (OFH.CA)                    | 0.275 | Dn.-Corr. | —      | —     | 0.275   | 0.31       | 0.275 | —        | —     |
| Pioneers holding (PIOH.CA)                            | 5.66  | Dn.-Corr. | —      | —     | 5.45    | 6.10       | 4.80  | —        | —     |
| <b>Housing &amp; Real Estate</b>                      |       |           |        |       |         |            |       |          |       |
| Egyptian For Tourism Resorts (EGTS.CA)                | 2.12  | Dn.-Corr. | —      | —     | 2.10    | 2.37       | 1.95  | —        | —     |
| Elshams housing (ELSH.CA)                             | 13.61 | Bearish   | —      | —     | 12.05   | 13.80      | 15.00 | —        | —     |
| Emaar holding (EMFD.CA)                               | 2.43  | Dn.-Corr. | —      | —     | 2.42    | 2.50       | 2.28  | —        | —     |
| Heliopolis housing & development (HELL.CA)            | 5.49  | Dn.-Corr. | —      | —     | 5.25    | 5.55       | 4.85  | —        | —     |
| Medinet Nasr for housing & Deve. (MNHD.CA)            | 2.91  | Up-Corr.  | —      | —     | 2.90    | 3.05       | 2.90  | —        | —     |
| 6th. October Deve. Inv. (OCDI.CA)                     | 17.20 | Dn.-Corr. | —      | —     | 16.80   | 17.35      | 15.70 | —        | —     |
| Palm hills development Co. (PHDC.CA)                  | 1.96  | Bullish   | 2.03√  | 2.11  | 1.96    | 2.03       | 1.60  | —        | —     |
| Talaat Mustafa group holding (TMGH.CA)                | 7.30  | Dn.-Corr. | —      | —     | 7.25    | 7.50       | 6.30  | —        | —     |
| <b>Mining &amp; Gas</b>                               |       |           |        |       |         |            |       |          |       |
| Alexandria Mineral Oils Co. (AMOC.CA)                 | 3.53  | Dn.-Corr. | —      | —     | 3.50    | 3.62       | 3.20  | —        | —     |
| Sidi Kerir Petrochemicals (SKPC.CA)                   | 9.94  | Bearish   | —      | —     | 9.30    | 10.30      | —     | —        | —     |
| <b>Textiles &amp; Clothes</b>                         |       |           |        |       |         |            |       |          |       |
| Arab Co. for asset management & Deve. (ACAMD.CA)      | 0.59  | Up-Corr.  | —      | —     | 0.60    | 0.645      | 0.60  | —        | —     |
| Arab cotton ginning (ACGC.CA)                         | 1.88  | Up-Corr.  | —      | —     | 1.77    | 1.95       | 1.70  | —        | —     |
| Oriental Weavers (ORWE.CA)                            | 8.70  | Dn.-Corr. | —      | —     | 8.25    | 8.65       | 7.50  | —        | —     |
| <b>Other Sectors</b>                                  |       |           |        |       |         |            |       |          |       |
| Egyptian Media Production City (MPRC.CA)              | 6.10  | Dn.-Corr. | —      | —     | 6.10    | 6.50       | 5.90  | —        | —     |
| Egyptian Transport - Egytrans (ETRS.CA)               | 14.70 | Up-Corr.  | —      | —     | 14.50   | 15.10      | 13.60 | —        | —     |
| Orascom holding development (ORHD.CA)                 | 4.74  | Up-Corr.  | —      | —     | 4.60    | 4.85       | —     | —        | —     |
| United Arab Shipping (UASG.CA)                        | 1.184 | Dn.-Corr. | —      | —     | 1.15    | 1.22       | 1.15  | —        | —     |

Disclaimer

- This publication has been prepared by Blom Egypt Securities for information purposes only.
- It is not intended as an offer to buy or sell or a solicitation of an offer to buy or sell the securities mentioned.
- The information & opinions in this publication were prepared by Blom Egypt Securities research department accepts no liability or legal responsibility for losses & damages incurred arising from the use of this publication or its contents.

**Blom Egypt Securities**  
Samir M. Azmi, CFTe, CETA  
Senior Technical Analyst  
samir.azmi@blomsecurities.com



**Guidelines for using BLOM daily Technical Analysis Report**

|                            |   |
|----------------------------|---|
| <b><u>Close:</u></b>       | Is recorded as the last trade in the session.   |
| <b><u>Trend:</u></b>       |   |
| <b>Bullish :</b>           | The strategy is to buy the dips.  |
| <b>Bearish :</b>           | The strategy is to sell the rallies.  |
| <b>Flat :</b>              | The strategy is to trade the range between the triggers.  |
| <b>Up-Corr. :</b>          | A move against the major trend when it is down.   |
| <b>Dn.-Corr. :</b>         | A move against the major trend when it is up.   |
| <b><u>Targets :</u></b>    | Take some profit by reducing a portion of the position whenever a price target is been hit.   |
| <b><u>Support :</u></b>    | A level below market price (previous lows) where buyers showed strength, in a bull market buy near the support and don't sell on the resistance. A break below the Support is considered to be a bearish sign.            |
| <b><u>Resistance :</u></b> | A level above market price (previous highs) where sellers showed strength, in a bear market sell near the resistance level and don't buy on the support. A break above the resistance is considered to be a bullish sign. |
| <b><u>Stop Loss :</u></b>  | Must exit the current position whenever the closing price is (1% to 2%) below the stop loss and confirmed by volume.  |
| <b><u>Triggers :</u></b>   | The range between the lower trigger and the upper is used for trading, break of any of them, the move would continue in the same direction.   |
| <b><u>Yellow rows:</u></b> | indication that the stock closed below/above support, stop-loss, or resistance but the break is not confirmed yet.  |

**Disclaimer**

- This publication has been prepared by Blom Egypt Securities for information purposes only.
- It is not intended as an offer to buy or sell or a solicitation of an offer to buy or sell the securities mentioned.
- The information & opinions in this publication were prepared by Blom Egypt Securities research department accepts no liability or legal responsibility for losses & damages incurred arising from the use of this publication or its contents.

**Blom Egypt Securities**  
**Samir M. Azmi, CFTe, CETA**  
**Senior Technical Analyst**  
**samir.azmi@blomsecurities.com**