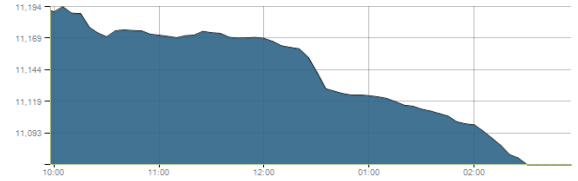




Indices intraday trends

EGX 30

مؤشر EGX 30  
اليوم - 17/03/2021

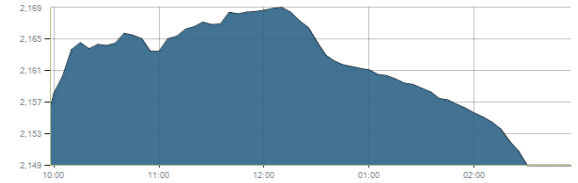


Key Levels

Support 1	11100-11000	Resistance 1	11230
Support 2	10900	Resistance 2	11500-11450

EGX 50 EWI

مؤشر EGX 50 EWI  
اليوم - 17/03/2021

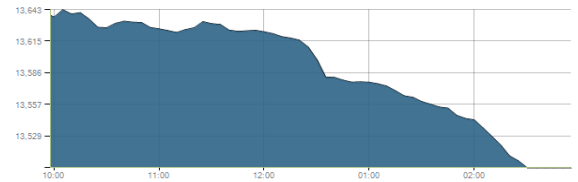


Key Levels

Close		2149.37	
Support 1	2150	Resistance 1	2230
Support 2	2045	Resistance 2	2300

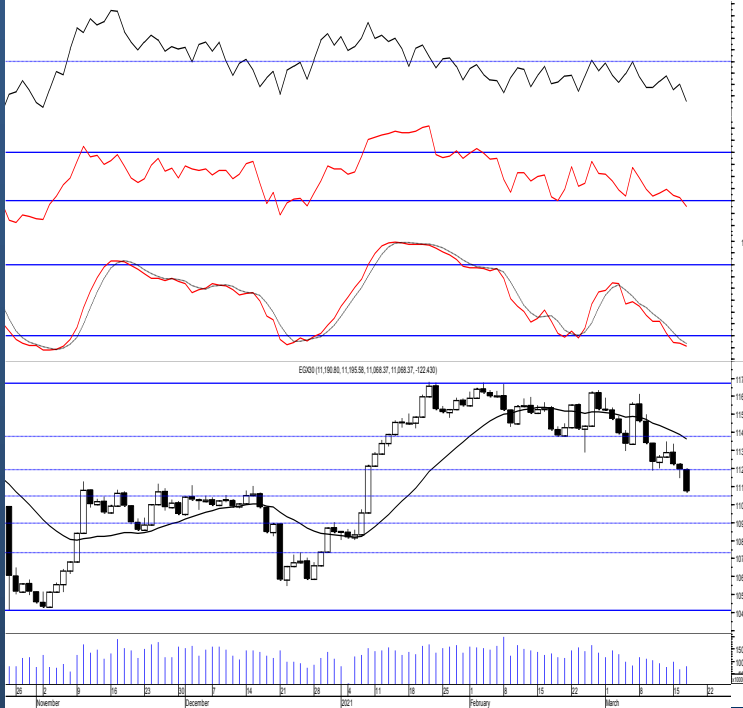
EGX 30 capped

مؤشر EGX 30 Capped  
اليوم - 17/03/2021



Key Levels

Close		13500.20	
Support 1	13470	Resistance 1	13850
Support 2	13170	Resistance 2	14200



Market Commentary:

The EGX30 dived lower as selling pressure dominated closing below the support level 11230 closing near the low confirming turning it into resistance and therefore turning the short term trend into down. Our coming support now are (11100-11000), 10900 & 10700 where we believe that the third mentioned level will be reached.

As we said, bears now have the near term technical advantage and lower lows will be expected.

We recommend to react separately on every stock while new trades to wait for a confirmed buy signal to react safely on.

Close	11068.37	Trend	Bearish
Pre. Close	11190.80	Target 1	---
Change	↓ 122.43 ( 1.09% )	Target 2	---
Day's range	11195.58 — 11068.64	Stop-loss	---
52week's high	11675.69	52week's low	8113.82

Disclaimer

- This publication has been prepared by Blom Egypt Securities for information purposes only.
- It is not intended as an offer to buy or sell or a solicitation of an offer to buy or sell the securities mentioned.
- The information & opinions in this publication were prepared by Blom Egypt Securities research department accepts no liability or legal responsibility for losses & damages incurred arising from the use of this publication or its contents.

**Blom Egypt Securities**  
Samir M. Azmi, CFTe, CETA  
Senior Technical Analyst  
samir.azmi@blomsecurities.com

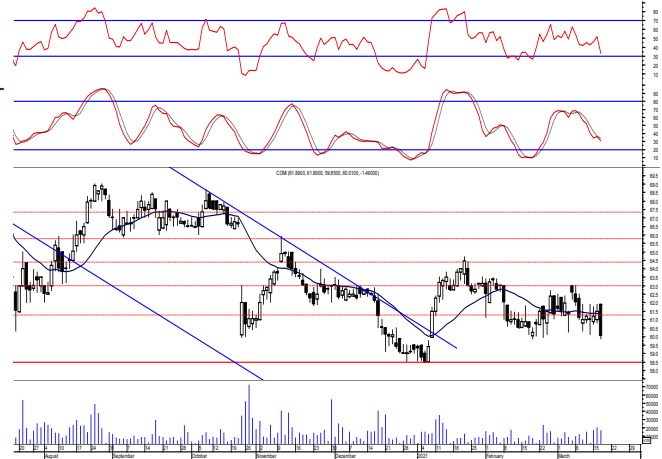


**Commercial international bank (COMI.CA):**

Prices witnessed a downward move as selling pressure strongly took place trading slightly below the support level 60.00 but managed to close back above keeping levels the same and so for our outlook.

New trades should wait for more confirmation while existing ones are advised to keep protective stop placed below 60.00.

Support levels: 60.00, 58.50  
Resistance levels: 63.00, 64.50

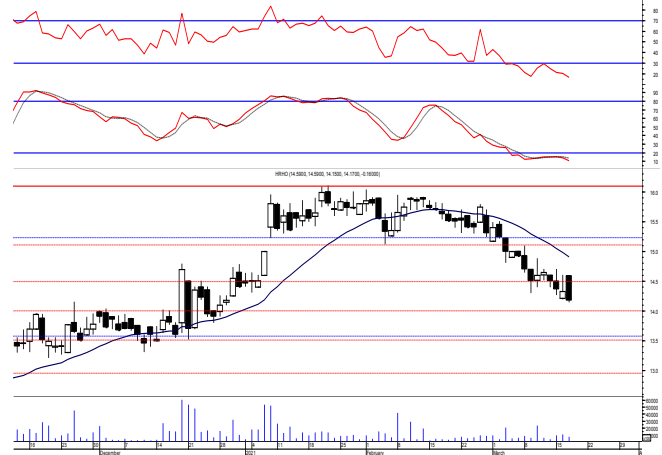


**Hermes Holding (HRHO.CA):**

Prices confirmed violating our support level 14.60 as selling pressure strongly dominated closing near the low turning it into resistance. As we said, by failing to defend the support level 14.60 bears are in control and therefore lower lows is expected.

Close stops should always be placed and respected to protect the downside.

Support levels: 13.50, 12.90  
Resistance levels: 14.60, 15.25-15.55

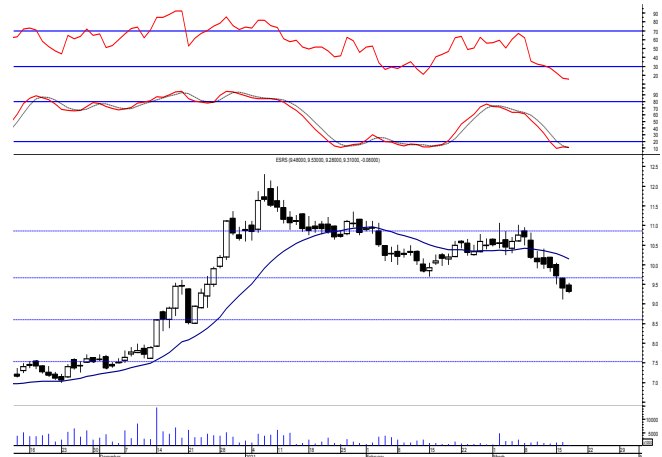


**El-Ezz steel rebar's' (ESRS.CA):**

Prices witnessed another downward move and closed near the low confirming the violation of our prominent support level 9.80 turning it into resistance.

Yet, new positions are advised to wait for a confirmed buy signal to react safely on

Support levels: 8.50, 7.50  
Resistance levels: 9.80, 10.60



**Disclaimer**

- This publication has been prepared by Blom Egypt Securities for information purposes only.
- It is not intended as an offer to buy or sell or a solicitation of an offer to buy or sell the securities mentioned.
- The information & opinions in this publication were prepared by Blom Egypt Securities research department accepts no liability or legal responsibility for losses & damages incurred arising from the use of this publication or its contents.

**Blom Egypt Securities**  
**Samir M. Azmi, CFTe, CETA**  
**Senior Technical Analyst**  
[samir.azmi@blomsecurities.com](mailto:samir.azmi@blomsecurities.com)



Most active Stocks

Daily Technical Analysis Report

18 Mar, 2021

Stock Name (Reuters' Code)	Close	Trend	T1	T2	Support	Resistance	SL	Triggers	
								Lower	Upper
<b>Building Materials &amp; Construction</b>									
Arabian cement (ARCC.CA)	3.10	Dn.-Corr.	—	—	3.00	3.17	3.00	—	—
El Ezz Steel Rebar's (ESRS.CA)	9.31	Bearish	—	—	8.50	9.80	—	—	—
GB auto (AUTO.CA)	4.03	Bullish	4.35	4.75	3.95	4.35	3.65	—	—
Orascom construction (ORAS.CA)	92.80	Dn.-Corr.	—	—	88.00	93.00	81.00	—	—
South Valley Cement (SVCE.CA)	1.73	Bearish	—	—	1.73	1.85	—	—	—
Elsweddy Cables (SWDY.CA)	8.92	Bearish	—	—	8.50	9.15	—	—	—
Upper Egypt general contracting (UEGC.CA)	0.78	Bearish	—	—	0.725	0.815	—	—	—
<b>Chemicals</b>									
Abu-Qir fertilizers (ABUK.CA)	21.00	Dn.-Corr.	—	—	20.90	21.70	19.20	—	—
Egyptian Financial & Indust. (EFIC.CA)	11.55	Up-Corr.	—	—	11.50	12.00	11.50	—	—
Egyptian chemical industries-Kima (EGCH.CA)	3.73	Up-Corr.	—	—	3.60	3.80	3.60	—	—
<b>Communications</b>									
Orascom investment holding (OIH.CA)	0.302	Bullish	0.302√	0.345	0.30	0.345	0.243	—	—
Telecom Egypt (ETEL.CA)	10.78	Bearish	—	—	10.80	11.40	—	—	—
<b>Financial Services</b>									
Abu Dhabi International Bank (ADIB.CA)	11.45	Dn.-Corr.	—	—	11.20	12.00	11.20	—	—
Arabian for investments & development (AIH.CA)	0.508	Bearish	—	—	0.47	0.536	—	—	—
Amer holding group (AMER.CA)	1.113	Dn.-Corr.	—	—	1.07	1.14	0.88	—	—
Commercial International Bank (COMI.CA)	60.01	Up-Corr.	—	—	60.00	63.00	58.50	—	—
Export development bank of Egypt (EXPA.CA)	12.69	Bearish	—	—	12.50	13.30	—	—	—
<b>Holding Companies</b>									
Citadel capital (CCAP.CA)	1.344	Bearish	—	—	1.315	1.40	—	—	—
Hermes Holding (HRHO.CA)	14.33	Dn.-Corr.	—	—	14.60	15.55	14.60	—	—
Kuwaiti Holding (EKHO.CA)	1.16	Up-Corr.	—	—	1.11	1.17	1.04	—	—
MM group for industry & international trade (MTIE.CA)	11.07	Dn.-Corr.	—	—	10.85	11.40	10.10	—	—
Orascom financial holding (OFH.CA)	0.30	Bearish	—	—	0.275	0.31	—	—	—
Pioneers holding (PIOH.CA)	4.57	Bearish	—	—	4.45	4.90	—	—	—
<b>Housing &amp; Real Estate</b>									
Egyptian For Tourism Resorts (EGTS.CA)	1.481	Bearish	—	—	1.45	1.52	1.35	—	—
Elshams housing (ELSH.CA)	4.36	Bearish	—	—	4.15	4.60	—	—	—
Emaar holding (EMFD.CA)	2.42	Bearish	—	—	2.25	2.45	—	—	—
Heliopolis housing & development (HELL.CA)	4.92	Bearish	—	—	4.60	5.00	—	—	—
Medinet Nasr for housing & Deve. (MNHD.CA)	3.77	Up-Corr.	—	—	3.75	3.97	3.50	—	—
6th. October Deve. Inv. (OCDI.CA)	16.69	Bullish	17.00√	18.70	16.00	17.00	13.90	—	—
Palm hills development Co. (PHDC.CA)	1.678	Dn.-Corr.	—	—	1.66	1.71	1.53	—	—
Talaat Mustafa group holding (TMGH.CA)	6.50	Bearish	—	—	6.40	6.65	—	—	—
<b>Mining &amp; Gas</b>									
Alexandria Mineral Oils Co. (AMOC.CA)	2.96	Up-Corr.	—	—	2.75	3.00	2.75	—	—
Sidi Kerir Petrochemicals (SKPC.CA)	10.80	Dn.-Corr.	—	—	10.50	11.10	9.80	—	—
<b>Textiles &amp; Clothes</b>									
Arab Co. for asset management & Deve. (ACAMD.CA)	0.843	Up-Corr.	—	—	0.82	0.93	0.77	—	—
Arab cotton ginning (ACGC.CA)	2.70	Bearish	—	—	2.65	2.85	—	—	—
Oriental Weavers (ORWE.CA)	7.08	Up-Corr.	—	—	6.75	7.10	6.50	—	—
<b>Other Sectors</b>									
Egyptian Media Production City (MPRC.CA)	6.06	Bearish	—	—	6.00	6.40	—	—	—
Egyptian Transport - Egytrans (ETRS.CA)	10.36	Bearish	—	—	10.60	11.00	—	—	—
Orascom holding development (ORHD.CA)	5.82	Bullish	6.10	6.45	5.65	6.45	4.70	—	—
United Arab Shipping (UASG.CA)	0.93	Bearish	—	—	0.905	0.98	—	—	—

Disclaimer

- This publication has been prepared by Blom Egypt Securities for information purposes only.
- It is not intended as an offer to buy or sell or a solicitation of an offer to buy or sell the securities mentioned.
- The information & opinions in this publication were prepared by Blom Egypt Securities research department accepts no liability or legal responsibility for losses & damages incurred arising from the use of this publication or its contents.

**Blom Egypt Securities**  
Samir M. Azmi, CFTe, CETA  
Senior Technical Analyst  
samir.azmi@blomsecurities.com



**Guidelines for using BLOM daily Technical Analysis Report**

<b><u>Close:</u></b>	Is recorded as the last trade in the session.
<b><u>Trend:</u></b>	
<b>Bullish :</b>	The strategy is to buy the dips.
<b>Bearish :</b>	The strategy is to sell the rallies.
<b>Flat :</b>	The strategy is to trade the range between the triggers.
<b>Up-Corr. :</b>	A move against the major trend when it is down.
<b>Dn.-Corr. :</b>	A move against the major trend when it is up.
<b><u>Targets :</u></b>	Take some profit by reducing a portion of the position whenever a price target is been hit.
<b><u>Support :</u></b>	A level below market price (previous lows) where buyers showed strength, in a bull market buy near the support and don't sell on the resistance. A break below the Support is considered to be a bearish sign.
<b><u>Resistance :</u></b>	A level above market price (previous highs) where sellers showed strength, in a bear market sell near the resistance level and don't buy on the support. A break above the resistance is considered to be a bullish sign.
<b><u>Stop Loss :</u></b>	Must exit the current position whenever the closing price is (1% to 2%) below the stop loss and confirmed by volume.
<b><u>Triggers :</u></b>	The range between the lower trigger and the upper is used for trading, break of any of them, the move would continue in the same direction.
<b><u>Yellow rows:</u></b>	indication that the stock closed below/above support, stop-loss, or resistance but the break is not confirmed yet.

**Disclaimer**

- This publication has been prepared by Blom Egypt Securities for information purposes only.
- It is not intended as an offer to buy or sell or a solicitation of an offer to buy or sell the securities mentioned.
- The information & opinions in this publication were prepared by Blom Egypt Securities research department accepts no liability or legal responsibility for losses & damages incurred arising from the use of this publication or its contents.

**Blom Egypt Securities**  
**Samir M. Azmi, CFTe, CETA**  
**Senior Technical Analyst**  
**samir.azmi@blomsecurities.com**