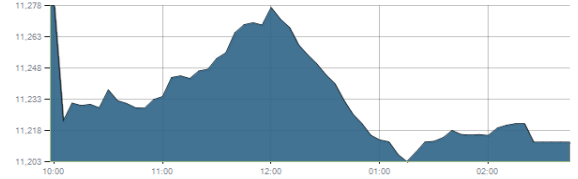




Indices intraday trends

EGX 30

مؤشر EGX 30
اليوم - 29/11/2021

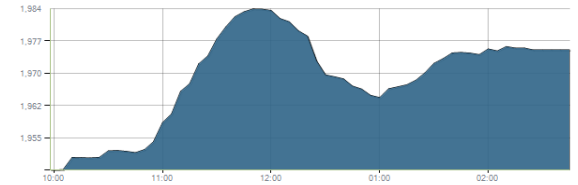


Key Levels

Support 1	11320-11200	Resistance 1	11675
Support 2	11100	Resistance 2	12250

EGX 50 EWI

مؤشر EGX 50 EWI
اليوم - 29/11/2021

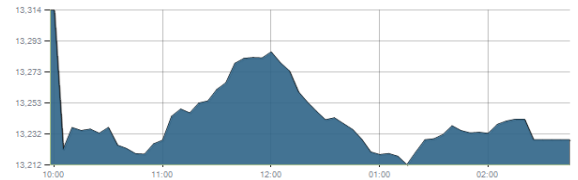


Key Levels

Close		1974.96	
Support 1	1970	Resistance 1	2060
Support 2	1890	Resistance 2	2150

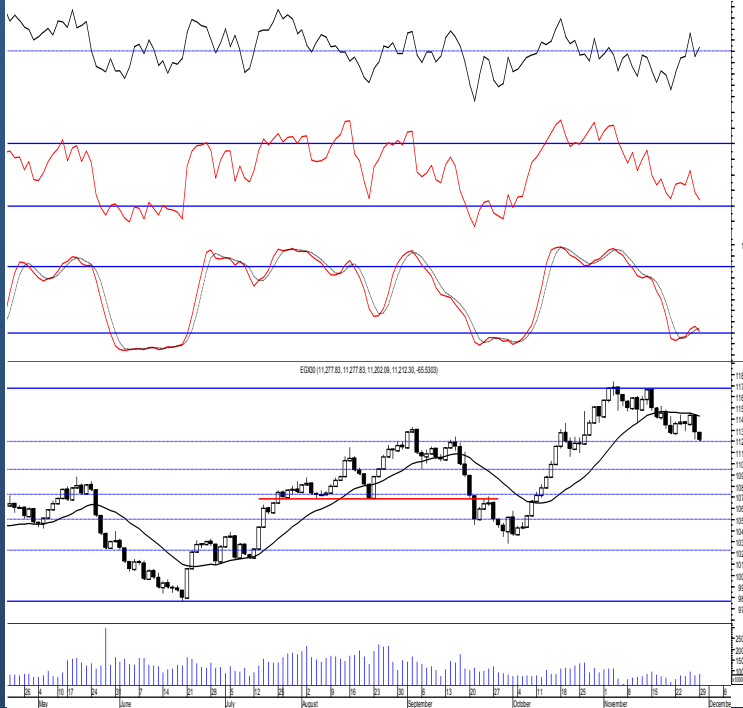
EGX 30 capped

مؤشر EGX 30 Capped
اليوم - 29/11/2021



Key Levels

Close		13228.27	
Support 1	13050	Resistance 1	13330
Support 2	12840	Resistance 2	13470



Market Commentary:

The EGX30 witnessed another downward move trading near the lower boundary of the important support zone [11320-11200] where again rebounding started from gaining a fair portion of the day's losses keeping levels unchanged and so for our outlook.

Trading should be very selective and conservative keeping close stops placed and respected to reduce market risk.

Notice that the mentioned support zone should be respected in any decline as any violation to it will indicate that bears are in control further decline will follow.

Close	11212.30	Trend	Dn.-Corr.
Pre. Close	11277.83	Target 1	---
Change	↓ 65.53 (0.58%)	Target 2	---
Day's range	11277.83 — 11202.09	Stop-loss	10680
52week's high	11675.69	52week's low	9769.18.18

Disclaimer

- This publication has been prepared by Blom Egypt Securities for information purposes only.
- It is not intended as an offer to buy or sell or a solicitation of an offer to buy or sell the securities mentioned.
- The information & opinions in this publication were prepared by Blom Egypt Securities research department accepts no liability or legal responsibility for losses & damages incurred arising from the use of this publication or its contents.

Blom Egypt Securities
Samir M. Azmi, CFTe, CETA
Senior Technical Analyst
samir.azmi@blomsecurities.com

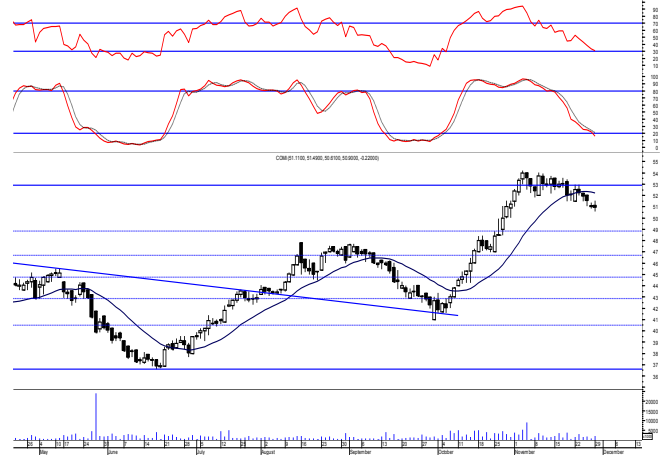


Commercial international bank (COMI.CA):

Prices traded lower as selling pressure remained in control closing negative near the low suggesting further decline so our outlook is the same.

As we said, confirming below 51.60 will lead to further decline to the coming support 49.80 so watch carefully and wait for a confirmed buy signal to react safely on.

Support levels: 49.80, 46.70
Resistance levels: 51.60, 52.80



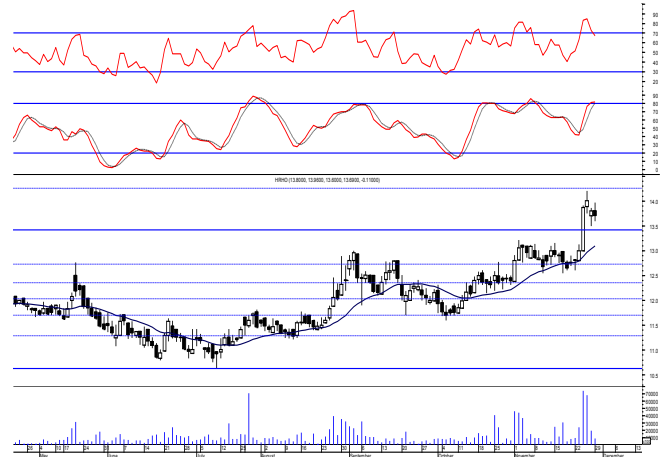
Hermes Holding (HRHO.CA):

Prices fell lower approaching our support level 13.40 closing slightly negative. Our outlook is the same, bullish trend is intact targeting 14.25 & 15.20.

Notice that 14.45 acts as very strong resistance level which should be respected.

New trades could be opened using the mentioned targets to trade gradually on taking into consideration the mentioned resistance level.

Support levels: 13.40, (12-75-12.60)
Resistance levels: 14.45, 16.35



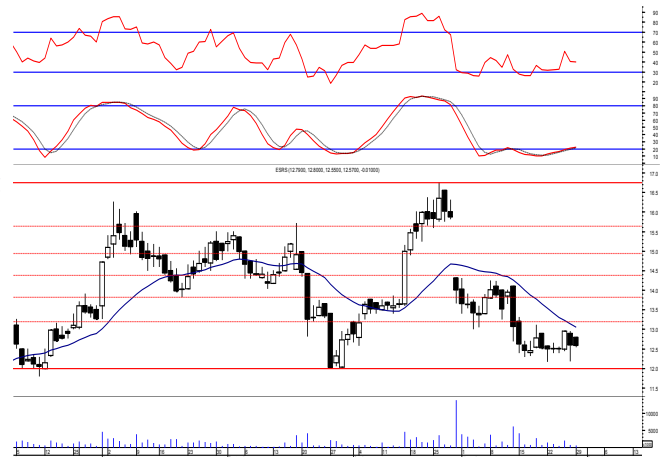
El-Ezz steel rebar's' (ESRS.CA):

Prices remained narrowly flat closing slightly positive keeping everything in place,

Positive signals are still forming which still suggests possible quick trade as further climbing is now expected to the coming resistance level 13.20.

Notice that clearing the mentioned level will lead to further climbing to 13.80 while 12.00 should always be watched.

Support levels: 12.00, 10.55
Resistance levels: 13.20, 13.80



Disclaimer

- This publication has been prepared by Blom Egypt Securities for information purposes only.
- It is not intended as an offer to buy or sell or a solicitation of an offer to buy or sell the securities mentioned.
- The information & opinions in this publication were prepared by Blom Egypt Securities research department accepts no liability or legal responsibility for losses & damages incurred arising from the use of this publication or its contents.

Blom Egypt Securities
Samir M. Azmi, CFTe, CETA
Senior Technical Analyst
samir.azmi@blomsecurities.com



Most active Stocks

Daily Technical Analysis Report

30 Nov, 2021

Stock Name (Reuters' Code)	Close	Trend	T1	T2	Support	Resistance	SL	Triggers	
								Lower	Upper
Building Materials & Construction									
Arabian cement (ARCC.CA)	3.80	Up-Corr.	—	—	3.77	4.10	3.20	—	—
El Ezz Steel Rebar's (ESRS.CA)	12.57	Bearish	—	—	12.00	13.20	—	—	—
GB auto (AUTO.CA)	3.90	Up-Corr.	—	—	3.70	3.90	3.57	—	—
Orascom construction (ORAS.CA)	69.79	Dn.-Corr.	—	—	68.50	71.70	68.50	—	—
South Valley Cement (SVCE.CA)	1.414	Up-Corr.	—	—	1.32	1.45	1.243	—	—
Elsweddy Cables (SWDY.CA)	8.30	UP-Corr.	—	—	8.30	8.75	7.90	—	—
Upper Egypt general contracting (UEGC.CA)	0.64	Up-Corr.	—	—	0.61	0.655	0.57	—	—
Chemicals									
Abu-Qir fertilizers (ABUK.CA)	18.73	Bearish	—	—	18.30	19.20	—	—	—
Egyptian Financial & Indust. (EFIC.CA)	11.76	Bearish	—	—	11.00	12.10	—	—	—
Egyptian chemical industries-Kima (EGCH.CA)	3.19	Up-Corr.	—	—	3.00	3.35	3.00	—	—
Communications									
Fawry for banking tech. & electronic payment (FWRY.CA)	12.10	Bearish	—	—	11.75	12.40	—	—	—
Orascom investment holding (OIH.CA)	0.221	Up-Corr.	—	—	0.215	0.23	0.20	—	—
Telecom Egypt (ETEL.CA)	14.56	Dn.-Corr.	—	—	13.80	14.80	12.90	—	—
Financial Services									
Abu Dhabi International Bank (ADIB.CA)	14.31	Up-Corr.	—	—	14.10	15.10	12.60	—	—
Arabian for investments & development (AIH.CA)	0.346	Bearish	—	—	0.31	0.37	—	—	—
Amer holding group (AMER.CA)	0.941	Bearish	—	—	0.905	0.96	—	—	—
Commercial International Bank (COMI.CA)	50.90	Dn.-Corr.	—	—	49.80	51.60	46.60	—	—
Export development bank of Egypt (EXPA.CA)	9.05	Bearish	—	—	8.10	9.20	—	—	—
Holding Companies									
Citadel capital (CCAP.CA)	1.147	Up-Corr.	—	—	1.09	1.17	1.09	—	—
Hermes Holding (HRHO.CA)	13.69	Bullish	14.25	15.20	13.40	14.45	11.25	—	—
Kuwaiti Holding (EKHO.CA)	1.37	Dn.-Corr.	—	—	1.35	1.395	1.22	—	—
MM group for industry & international trade (MTIE.CA)	6.03	Up-Corr.	—	—	5.90	6.20	5.60	—	—
Orascom financial holding (OFH.CA)	0.21	Bearish	—	—	0.195	0.23	—	—	—
Housing & Real Estate									
Egyptian For Tourism Resorts (EGTS.CA)	1.328	Bearish	—	—	1.21	1.47	—	—	—
Elshams housing (ELSH.CA)	8.13	Up-Corr.	—	—	7.70	8.30	5.40	—	—
Emaar holding (EMFD.CA)	2.60	Dn.-Corr.	—	—	2.50	2.645	2.28	—	—
Heliopolis housing & development (HELL.CA)	4.66	Up-Corr.	—	—	4.55	4.85	3.97	—	—
Medinet Nasr for housing & Deve. (MNHD.CA)	2.37	Up-Corr.	—	—	2.16	2.40	2.16	—	—
6th. October Deve. Inv. (OCDI.CA)	19.60	Bullish	19.60√	21.50	18.80	19.60	16.90	—	—
Palm hills development Co. (PHDC.CA)	1.77	Up-Corr.	—	—	1.72	1.83	1.72	—	—
Talaat Mustafa group holding (TMGH.CA)	8.09	Bullish	8.20√	8.90	7.80	8.20	6.90	—	—
Mining & Gas									
Alexandria Mineral Oils Co. (AMOC.CA)	3.42	Bearish	—	—	3.40	3.55	—	—	—
Sidi Kerir Petrochemicals (SKPC.CA)	6.61	Bearish	—	—	6.30	6.80	—	—	—
Textiles & Clothes									
Arab Co. for asset management & Deve. (ACAMD.CA)	0.481	Up-Corr.	—	—	0.425	0.50	0.35	—	—
Arab cotton ginning (ACGC.CA)	1.754	Up-Corr.	—	—	1.74	1.81	1.455	—	—
Oriental Weavers (ORWE.CA)	8.37	Dn.-Corr.	—	—	8.05	8.55	7.50	—	—
Other Sectors									
Egyptian Media Production City (MPRC.CA)	4.62	Bearish	—	—	4.40	4.75	—	—	—
Egyptian Transport - Egytrans (ETRS.CA)	10.80	Up-Corr.	—	—	9.80	11.30	9.80	—	—
Orascom holding development (ORHD.CA)	5.65	Up-Corr.	—	—	5.55	5.80	5.15	—	—
United Arab Shipping (UASG.CA)	0.927	Bearish	—	—	0.80	0.945	—	—	—

Disclaimer

- This publication has been prepared by Blom Egypt Securities for information purposes only.
- It is not intended as an offer to buy or sell or a solicitation of an offer to buy or sell the securities mentioned.
- The information & opinions in this publication were prepared by Blom Egypt Securities research department accepts no liability or legal responsibility for losses & damages incurred arising from the use of this publication or its contents.

Blom Egypt Securities
Samir M. Azmi, CFTe, CETA
Senior Technical Analyst
samir.azmi@blomsecurities.com



Guidelines for using BLOM daily Technical Analysis Report

<u>Close:</u>	Is recorded as the last trade in the session.
<u>Trend:</u>	
Bullish :	The strategy is to buy the dips.
Bearish :	The strategy is to sell the rallies.
Flat :	The strategy is to trade the range between the triggers.
Up-Corr. :	A move against the major trend when it is down.
Dn.-Corr. :	A move against the major trend when it is up.
<u>Targets :</u>	Take some profit by reducing a portion of the position whenever a price target is been hit.
<u>Support :</u>	A level below market price (previous lows) where buyers showed strength, in a bull market buy near the support and don't sell on the resistance. A break below the Support is considered to be a bearish sign.
<u>Resistance :</u>	A level above market price (previous highs) where sellers showed strength, in a bear market sell near the resistance level and don't buy on the support. A break above the resistance is considered to be a bullish sign.
<u>Stop Loss :</u>	Must exit the current position whenever the closing price is (1% to 2%) below the stop loss and confirmed by volume.
<u>Triggers :</u>	The range between the lower trigger and the upper is used for trading, break of any of them, the move would continue in the same direction.
<u>Yellow rows:</u>	indication that the stock closed below/above support, stop-loss, or resistance but the break is not confirmed yet.

Disclaimer

- This publication has been prepared by Blom Egypt Securities for information purposes only.
- It is not intended as an offer to buy or sell or a solicitation of an offer to buy or sell the securities mentioned.
- The information & opinions in this publication were prepared by Blom Egypt Securities research department accepts no liability or legal responsibility for losses & damages incurred arising from the use of this publication or its contents.

Blom Egypt Securities
Samir M. Azmi, CFTe, CETA
Senior Technical Analyst
samir.azmi@blomsecurities.com