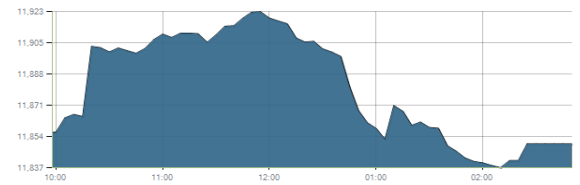


Indices intraday trends

EGX 30

مؤشر EGX 30  
اليوم - 27/12/2021

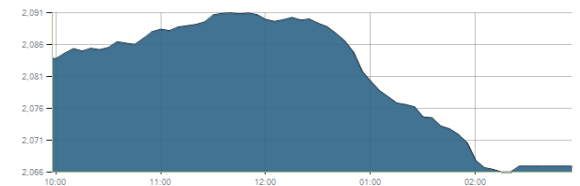


Key Levels

Support 1	11675	Resistance 1	11900
Support 2	11320-11200	Resistance 2	12250

EGX 50 EWI

مؤشر EGX 50 EWI  
اليوم - 27/12/2021

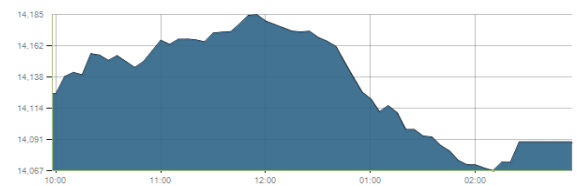


Key Levels

Close		2067.04	
Support 1	2060	Resistance 1	2150
Support 2	1970	Resistance 2	2210

EGX 30 capped

مؤشر EGX 30 Capped  
اليوم - 27/12/2021



Key Levels

Close		14088.91	
Support 1	13800	Resistance 1	14150
Support 2	13550	Resistance 2	14325

Market Commentary:

The EGX30 closed in red as selling pressure remained evident from our 1st target level 11900 due to taking profit process leaving levels unchanged and so for our outlook.

Yet, the rally is still expected to resume to the second target level where we may use for short term trading.

As we said, medium term targets now 12250 & 12850, while short term, targets will be 11900 & 12070.

We recommend to be conservative and very selective keeping close stops placed and respected to reduce market risk.

Notice that any retreating below 11675 will put the market under stress leading to further decline due to lack of confidence so stay alerted and disciplined.

Close	11849.79	Trend	Targets
Pre. Close	11856.21	Target 1	11900 ✓
Change	↓ 6.42 ( 0.05% )	Target 2	12070
Day's range	11922.68 — 11834.00	Stop-loss	11200
52week's high	11675.69	52week's low	9769.18.18

Disclaimer

- This publication has been prepared by Blom Egypt Securities for information purposes only.
- It is not intended as an offer to buy or sell or a solicitation of an offer to buy or sell the securities mentioned.
- The information & opinions in this publication were prepared by Blom Egypt Securities research department accepts no liability or legal responsibility for losses & damages incurred arising from the use of this publication or its contents.

**Blom Egypt Securities**  
Samir M. Azmi, CFTe, CETA  
Senior Technical Analyst  
samir.azmi@blomsecurities.com

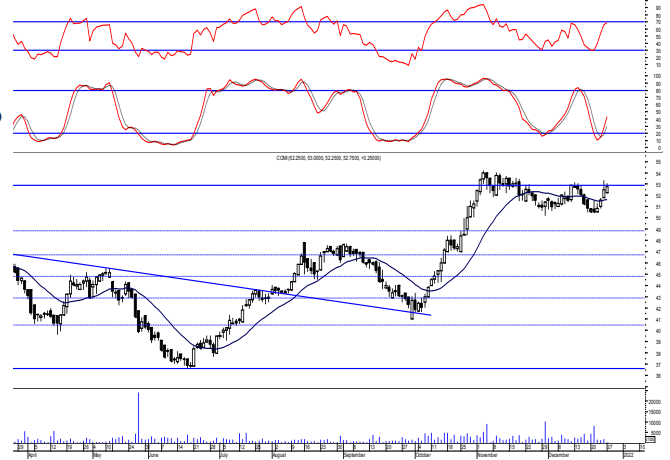


**Commercial international bank (COMI.CA):**

Prices witnessed another attempt to clear the resistance level 52.80 but closed back below keeping levels unchanged and so for our outlook.

We believe that further climbing will likely follow to the previous reached high 53.50. possible trades could be tried on current levels, bearing in mind that clearing the previous reached high will confirm the existing bullish sentiment setting new target levels.

Support levels: 51.60, 50.20  
Resistance levels: 52.80, 54.50

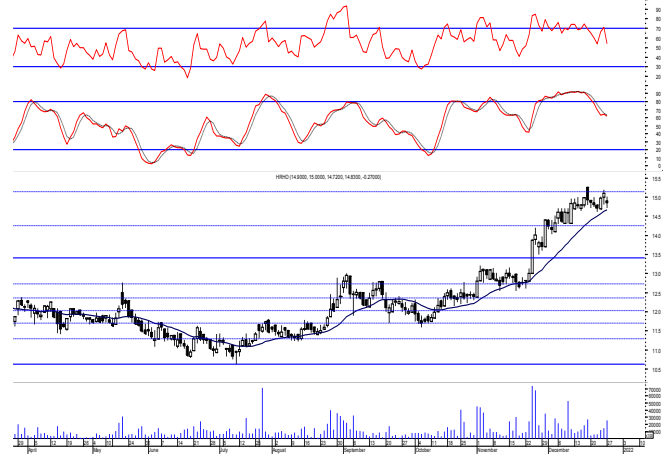


**Hermes Holding (HRHO.CA):**

Prices remained flat within the same range closing slightly negative leaving everything in place. Further climbing will likely follow to the previous reached high where we may use the range for short term trading

We recommended to trade on the mentioned target, now we recommend to stay on cash till a confirmed buy signal is clear. Held positions are advised to keep protective stop placed and respected below 14.45.

Support levels: 14.45, 13.40  
Resistance levels: 16.35, 17.40



**El-Ezz steel rebar's' (ESRS.CA):**

Prices remained narrowly flat as quiet trading performance dominated closing slightly positive above our support level 14.50 leaving everything in place.

Yet, it's recommended to stay on cash and wait for a confirmed buy signal to react safely on.

Support levels: 13.80, 13.20  
Resistance levels: 14.50, 15.65



**Disclaimer**

- This publication has been prepared by Blom Egypt Securities for information purposes only.
- It is not intended as an offer to buy or sell or a solicitation of an offer to buy or sell the securities mentioned.
- The information & opinions in this publication were prepared by Blom Egypt Securities research department accepts no liability or legal responsibility for losses & damages incurred arising from the use of this publication or its contents.

**Blom Egypt Securities**  
**Samir M. Azmi, CFTe, CETA**  
**Senior Technical Analyst**  
**samir.azmi@blomsecurities.com**



Most active Stocks

Daily Technical Analysis Report

28 Dec, 2021

Stock Name (Reuters' Code)	Close	Trend	T1	T2	Support	Resistance	SL	Triggers	
								Lower	Upper
<b>Building Materials &amp; Construction</b>									
Arabian cement (ARCC.CA)	4.30	Bullish	4.60	4.90	4.10	4.60	3.60	---	
El Ezz Steel Rebar's (ESRS.CA)	14.62	Up-Corr.	---	---	14.50	15.65	13.20	---	
GB auto (AUTO.CA)	4.92	Flat	---	---	---	---	4.35	4.65 — 5.00	
Orascom construction (ORAS.CA)	76.89	Dn.-Corr.	---	---	74.00	77.50	68.50	---	
South Valley Cement (SVCE.CA)	1.46	Flat	---	---	---	---	1.243	1.36 — 1.48	
Elswedey Cables (SWDY.CA)	9.70	Bullish	9.70√	10.25	9.40	10.25	8.60	---	
Upper Egypt general contracting (UEGC.CA)	0.662	Up-Corr.	---	---	0.65	0.69	0.57	---	
<b>Chemicals</b>									
Abu-Qir fertilizers (ABUK.CA)	20.50	Up-Corr.	---	---	19.90	20.60	17.90	---	
Egyptian Financial & Indust. (EFIC.CA)	13.10	Up-Corr.	---	---	12.50	13.70	11.40	---	
Egyptian chemical industries-Kima (EGCH.CA)	3.77	Up-Corr.	---	---	3.50	3.85	3.00	---	
<b>Communications</b>									
Fawry for banking tech. & electronic payment (FWRY.CA)	12.85	Up-Corr.	---	---	12.30	13.60	11.80	---	
Orascom investment holding (OIH.CA)	0.237	Up-Corr.	---	---	0.23	0.26	0.20	---	
Telecom Egypt (ETEL.CA)	16.52	Bullish	16.05√	16.80√	16.00	16.80	14.70	---	
<b>Financial Services</b>									
Abu Dhabi International Bank (ADIB.CA)	15.70	Up-Corr.	---	---	15.50	16.10	12.60	---	
Arabian for investments & development (AIH.CA)	0.357	Up-Corr.	---	---	0.335	0.37	0.305	---	
Amer holding group (AMER.CA)	0.941	Up-Corr.	---	---	0.945	1.00	0.85	---	
Commercial International Bank (COMI.CA)	52.75	Dn.-Corr.	---	---	51.60	52.80	46.60	---	
Export development bank of Egypt (EXPA.CA)	8.96	Up-Corr.	---	---	8.60	9.20	8.60	---	
<b>Holding Companies</b>									
Citadel capital (CCAP.CA)	1.217	Up-Corr.	---	---	1.22	1.31	1.09	---	
Hermes Holding (HRHO.CA)	14.83	Bullish	14.25√	15.20√	14.45	15.20	11.25	---	
Kuwaiti Holding (EKHO.CA)	1.33	Dn.-Corr.	---	---	1.315	1.36	1.22	---	
MM group for industry & international trade (MTIE.CA)	6.26	Up-Corr.	---	---	6.15	6.40	5.60	---	
Orascom financial holding (OFH.CA)	0.218	Bearish	---	---	0.195	0.23	---	---	
<b>Housing &amp; Real Estate</b>									
Egyptian For Tourism Resorts (EGTS.CA)	1.55	Up-Corr.	---	---	1.44	1.63	1.23	---	
Elshams housing (ELSH.CA)	7.87	Up-Corr.	---	---	7.80	8.40	7.40	---	
Emaar holding (EMFD.CA)	3.00	Bullish	3.00√	3.20	2.80	3.10	2.70	---	
Heliopolis housing & development (HELI.CA)	7.11	Bullish	7.60	8.10	6.90	7.60	6.30	---	
Medinet Nasr for housing & Deve. (MNHD.CA)	2.95	Up-Corr.	---	---	2.90	3.05	2.52	---	
Palm hills development Co. (PHDC.CA)	1.96	Up-Corr.	---	---	1.94	2.00	1.72	---	
Talaat Mustafa group holding (TMGH.CA)	9.05	Bullish	9.55	10.05	8.90	10.05	7.60	---	
<b>Mining &amp; Gas</b>									
Alexandria Mineral Oils Co. (AMOC.CA)	3.55	Up-Corr.	---	---	3.33	3.55	3.33	---	
Sidi Kerir Petrochemicals (SKPC.CA)	7.62	Up-Corr.	---	---	7.25	7.75	6.30	---	
<b>Textiles &amp; Clothes</b>									
Arab Co. for asset management & Deve. (ACAMD.CA)	0.52	Up-Corr.	---	---	0.50	0.565	0.42	---	
Arab cotton ginning (ACGC.CA)	1.684	Up-Corr.	---	---	1.65	1.81	1.455	---	
Oriental Weavers (ORWE.CA)	8.60	Dn.-Corr.	---	---	8.40	8.75	7.50	---	
<b>Other Sectors</b>									
Egyptian Media Production City (MPRC.CA)	5.98	Up-Corr.	---	---	6.00	6.40	4.80	---	
Egyptian Transport - Egytrans (ETRS.CA)	11.10	Up-Corr.	---	---	9.80	11.30	9.80	---	
Orascom holding development (ORHD.CA)	5.95	Up-Corr.	---	---	5.80	6.25	5.15	---	
United Arab Shipping (UASG.CA)	0.996	Up-Corr.	---	---	0.975	1.04	0.80	---	

Disclaimer

- This publication has been prepared by Blom Egypt Securities for information purposes only.
- It is not intended as an offer to buy or sell or a solicitation of an offer to buy or sell the securities mentioned.
- The information & opinions in this publication were prepared by Blom Egypt Securities research department accepts no liability or legal responsibility for losses & damages incurred arising from the use of this publication or its contents.

**Blom Egypt Securities**  
Samir M. Azmi, CFTe, CETA  
Senior Technical Analyst  
samir.azmi@blomsecurities.com



### Guidelines for using BLOM daily Technical Analysis Report

<b><u>Close:</u></b>	Is recorded as the last trade in the session.
<b><u>Trend:</u></b>	
<b>Bullish :</b>	The strategy is to buy the dips.
<b>Bearish :</b>	The strategy is to sell the rallies.
<b>Flat :</b>	The strategy is to trade the range between the triggers.
<b>Up-Corr. :</b>	A move against the major trend when it is down.
<b>Dn.-Corr. :</b>	A move against the major trend when it is up.
<b><u>Targets :</u></b>	Take some profit by reducing a portion of the position whenever a price target is been hit.
<b><u>Support :</u></b>	A level below market price (previous lows) where buyers showed strength, in a bull market buy near the support and don't sell on the resistance. A break below the Support is considered to be a bearish sign.
<b><u>Resistance :</u></b>	A level above market price (previous highs) where sellers showed strength, in a bear market sell near the resistance level and don't buy on the support. A break above the resistance is considered to be a bullish sign.
<b><u>Stop Loss :</u></b>	Must exit the current position whenever the closing price is (1% to 2%) below the stop loss and confirmed by volume.
<b><u>Triggers :</u></b>	The range between the lower trigger and the upper is used for trading, break of any of them, the move would continue in the same direction.
<b><u>Yellow rows:</u></b>	indication that the stock closed below/above support, stop-loss, or resistance but the break is not confirmed yet.

#### Disclaimer

- This publication has been prepared by Blom Egypt Securities for information purposes only.
- It is not intended as an offer to buy or sell or a solicitation of an offer to buy or sell the securities mentioned.
- The information & opinions in this publication were prepared by Blom Egypt Securities research department accepts no liability or legal responsibility for losses & damages incurred arising from the use of this publication or its contents.

**Blom Egypt Securities**  
**Samir M. Azmi, CFTe, CETA**  
**Senior Technical Analyst**  
[samir.azmi@blomsecurities.com](mailto:samir.azmi@blomsecurities.com)