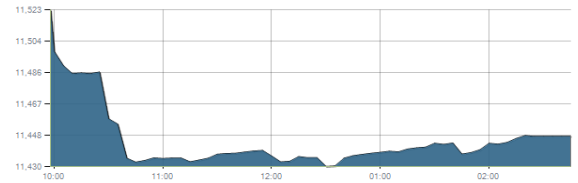




Indices intraday trends

EGX 30

مؤشر EGX 30
اليوم - 09/02/2021

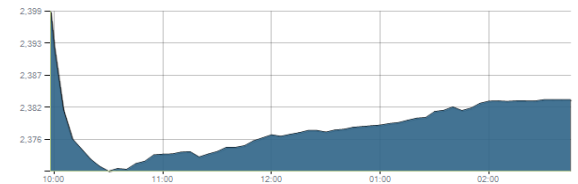


Key Levels

Support 1	11500-11450	Resistance 1	11850
Support 2	11230	Resistance 2	12200

EGX 50 EWI

مؤشر EGX 50 EWI
اليوم - 09/02/2021

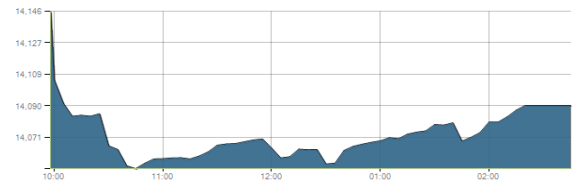


Key Levels

Close		2382.92	
Support 1	2360	Resistance 1	2430
Support 2	2300	Resistance 2	2600

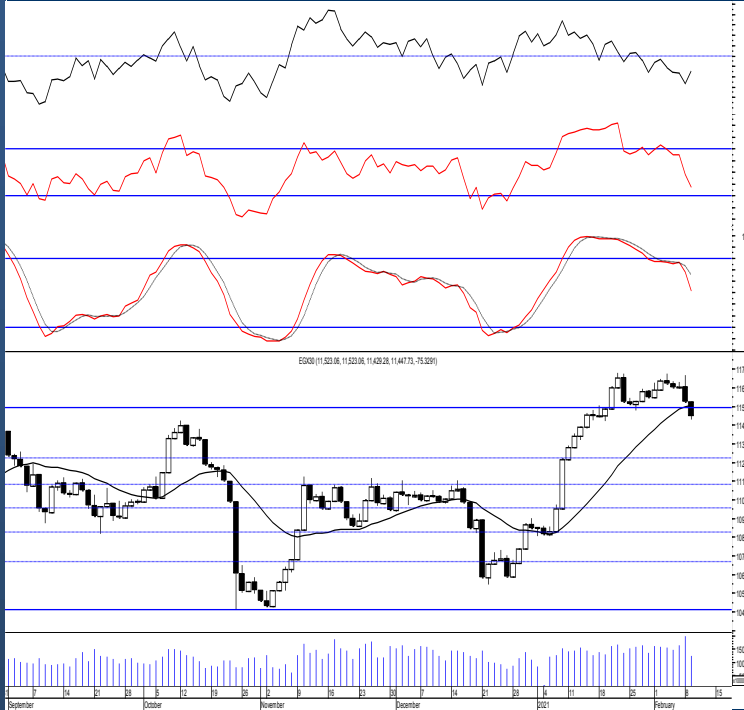
EGX 30 capped

مؤشر EGX 30 Capped
اليوم - 09/02/2021



Key Levels

Close		14090.17	
Support 1	13850	Resistance 1	14200
Support 2	13700	Resistance 2	14750



Market Commentary:

The EGX30 witnessed another downward as selling pressure dominated in most of the stocks pushing the index lower below the mentioned support zone. Rebounding process took place pushing the index higher closing the index slightly below the zone.

As we said, it's highly recommended to sustain above the mentioned support to keep the view positive which therefore will keep our target levels at 11850 & 12200.

Failing to defend this zone will keep the market under further stress and lower levels will be expected.

Close	11447.73	Trend	Bullish
Pre. Close	11523.06	Target 1	11450 ✓
Change	↓ 75.33 (0.65%)	Target 2	11850
Day's range	11523.06 — 11429.28	Stop-loss	11230
52week's high	14831.20	52week's low	8113.82

Disclaimer

- This publication has been prepared by Blom Egypt Securities for information purposes only.
- It is not intended as an offer to buy or sell or a solicitation of an offer to buy or sell the securities mentioned.
- The information & opinions in this publication were prepared by Blom Egypt Securities research department accepts no liability or legal responsibility for losses & damages incurred arising from the use of this publication or its contents.

Blom Egypt Securities
Samir M. Azmi, CFTe, CETA
Senior Technical Analyst
samir.azmi@blomsecurities.com

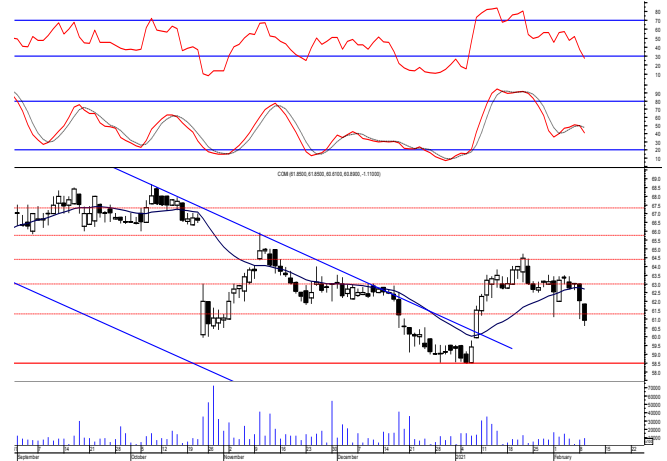


Commercial international bank (COMI.CA):

Prices witnessed another downward move after violating the support level 63.00 closing near the low after failing to continue any rebounding attempt within the session keeping levels unchanged and so for our outlook.

Ignoring the recent strength evident on technical indicators is considered a negative sign indicating that bears are gaining control so it's highly recommended to watch current levels. Protective stop should be placed below 60.00.

Support levels: 60.00, 58.50
 Resistance levels: 63.00, 64.50

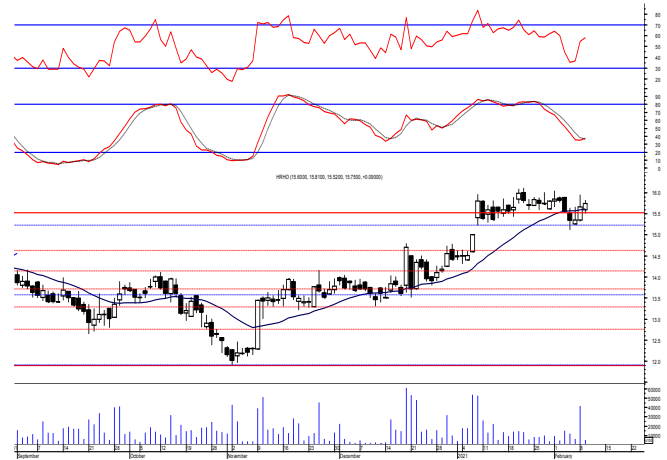


Hermes Holding (HRHO.CA):

Prices closed slightly positive near the high after the early decline near the support zone keeping everything in place. Notice that it is very important to defend the mentioned zone to prove that buyers are still in control.

New target zone within 16.60-17.10 where we believe it represents strong retracement level where may use trade on. Close stops should always be placed and respected to protect the downside.

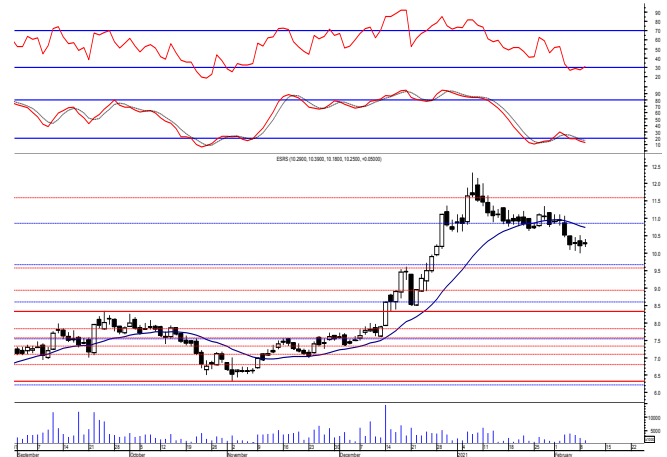
Support levels: 15.55-15.25, 14.60
 Resistance levels: 16.60-17.10, 17.80



El-Ezz steel rebar's' (ESRS.CA):

Prices remained narrowly flat closing with a slight positive change leaving levels unchanged and so for our outlook. As we said, confirming below the mentioned support triggers an opposite trade opportunity where we can sell and buy near the next support.

Support levels: 9.80, 8.90
 Resistance levels: 10.60, 10.90



Disclaimer

- This publication has been prepared by Blom Egypt Securities for information purposes only.
- It is not intended as an offer to buy or sell or a solicitation of an offer to buy or sell the securities mentioned.
- The information & opinions in this publication were prepared by Blom Egypt Securities research department accepts no liability or legal responsibility for losses & damages incurred arising from the use of this publication or its contents.

Blom Egypt Securities
Samir M. Azmi, CFTe, CETA
 Senior Technical Analyst
samir.azmi@blomsecurities.com



Most active Stocks

Daily Technical Analysis Report

10 Feb, 2021

Stock Name (Reuters' Code)	Close	Trend	T1	T2	Support	Resistance	SL	Triggers	
								Lower	Upper
Building Materials & Construction									
Arabian cement (ARCC.CA)	3.36	Dn.-Corr.	—	—	3.17	3.42	3.00	—	—
El Ezz Steel Rebar's (ESRS.CA)	10.25	Bearish	—	—	9.80	10.60	—	—	—
GB auto (AUTO.CA)	3.79	Dn.-Corr.	—	—	3.50	3.77	2.95	—	—
Orascom construction (ORAS.CA)	95.10	Dn.-Corr.	—	—	93.00	96.00	81.00	—	—
South Valley Cement (SVCE.CA)	1.888	Up-Corr.	—	—	1.81	1.90	1.58	—	—
Elsweddy Cables (SWDY.CA)	10.19	Bullish	10.75	11.15	10.10	11.15	9.60	—	—
Upper Egypt general contracting (UEGC.CA)	1.18	Dn.-Corr.	—	—	1.09	1.18	0.995	—	—
Chemicals									
Abu-Qir fertilizers (ABUK.CA)	22.00	Dn.-Corr.	—	—	21.70	22.40	19.20	—	—
Egyptian Financial & Indust. (EFIC.CA)	12.10	Up-Corr.	—	—	11.85	12.80	11.10	—	—
Egyptian chemical industries-Kima (EGCH.CA)	4.14	Up-Corr.	—	—	4.00	4.20	3.80	—	—
Communications									
Orascom investment holding (OIH.CA)	0.637	Bullish	0.64√	0.68	0.59	0.64	0.55	—	—
Telecom Egypt (ETEL.CA)	11.50	Up-Corr.	—	—	11.40	11.90	11.40	—	—
Financial Services									
Abu Dhabi International Bank (ADIB.CA)	12.16	Dn.-Corr.	—	—	12.10	12.50	11.20	—	—
Arabian for investments & development (AIH.CA)	0.705	Dn.-Corr.	—	—	0.68	0.71	0.59	—	—
Amer holding group (AMER.CA)	1.211	Dn.-Corr.	—	—	1.14	1.25	0.98	—	—
Commercial International Bank (COMI.CA)	60.89	Up-Corr.	—	—	60.00	63.00	58.50	—	—
Export development bank of Egypt (EXPA.CA)	14.30	Up-Corr.	—	—	14.00	14.60	13.30	—	—
Holding Companies									
CI capital holding for financial investments (CICH.CA)	4.53	Bullish	4.20√	4.50√	4.35	4.50	4.00	—	—
Citadel capital (CCAP.CA)	1.565	Up-Corr.	—	—	1.53	1.60	1.39	—	—
Hermes Holding (HRHO.CA)	15.75	Bullish	16.60	17.80	15.20	17.10	14.60	—	—
Kuwaiti Holding (EKHO.CA)	1.08	Up-Corr.	—	—	1.03	1.09	0.94	—	—
MM group for industry & international trade (MTIE.CA)	8.86	Dn.-Corr.	—	—	8.70	9.20	8.70	—	—
Pioneers holding (PIOH.CA)	5.71	Bullish	5.95	6.30	5.40	5.95	4.45	—	—
Housing & Real Estate									
Egyptian For Tourism Resorts (EGTS.CA)	1.566	Up-Corr.	—	—	1.51	1.60	1.45	—	—
Elshams housing (ELSH.CA)	5.30	Dn.-Corr.	—	—	5.05	5.35	4.85	—	—
Emaar holding (EMFD.CA)	2.57	Dn.-Corr.	—	—	2.45	2.65	2.45	—	—
Heliopolis housing & development (HELL.CA)	5.82	Up-Corr.	—	—	5.50	5.90	5.50	—	—
Medinet Nasr for housing & Deve. (MNHD.CA)	3.83	Up-Corr.	—	—	3.80	3.97	3.75	—	—
6th. October Deve. Inv. (OCDI.CA)	15.69	Flat	—	—	—	—	13.90	15.15	16.20
Palm hills development Co. (PHDC.CA)	1.68	Bullish	1.86	2.00	1.70	1.86	1.53	—	—
Talaat Mustafa group holding (TMGH.CA)	7.10	Dn.-Corr.	—	—	7.00	7.30	6.30	—	—
Mining & Gas									
Alexandria Mineral Oils Co. (AMOC.CA)	3.31	Dn.-Corr.	—	—	3.13	3.37	3.00	—	—
Sidi Kerir Petrochemicals (SKPC.CA)	10.22	Dn.-Corr.	—	—	9.80	10.60	9.20	—	—
Textiles & Clothes									
Arab Co. for asset management & Deve. (ACAMD.CA)	5.81	Up-Corr.	—	—	5.50	5.90	4.65	—	—
Arab cotton ginning (ACGC.CA)	3.23	Up-Corr.	—	—	3.20	3.45	2.85	—	—
Oriental Weavers (ORWE.CA)	6.85	Up-Corr.	—	—	6.50	7.00	6.50	—	—
Other Sectors									
Egyptian Media Production City (MPRC.CA)	8.10	Up-Corr.	—	—	7.45	8.20	5.40	—	—
Egyptian Transport - Egytrans (ETRS.CA)	10.43	Up-Corr.	—	—	9.90	10.65	9.90	—	—
Orascom holding development (ORHD.CA)	5.01	Dn.-Corr.	—	—	4.85	5.35	4.45	—	—
United Arab Shipping (UASG.CA)	1.17	Dn.-Corr.	—	—	1.125	1.22	1.05	—	—

Disclaimer

- This publication has been prepared by Blom Egypt Securities for information purposes only.
- It is not intended as an offer to buy or sell or a solicitation of an offer to buy or sell the securities mentioned.
- The information & opinions in this publication were prepared by Blom Egypt Securities research department accepts no liability or legal responsibility for losses & damages incurred arising from the use of this publication or its contents.

Blom Egypt Securities
Samir M. Azmi, CFTe, CETA
Senior Technical Analyst
samir.azmi@blomsecurities.com



Guidelines for using BLOM daily Technical Analysis Report

<u>Close:</u>	Is recorded as the last trade in the session.
<u>Trend:</u>	
Bullish :	The strategy is to buy the dips.
Bearish :	The strategy is to sell the rallies.
Flat :	The strategy is to trade the range between the triggers.
Up-Corr. :	A move against the major trend when it is down.
Dn.-Corr. :	A move against the major trend when it is up.
<u>Targets :</u>	Take some profit by reducing a portion of the position whenever a price target is been hit.
<u>Support :</u>	A level below market price (previous lows) where buyers showed strength, in a bull market buy near the support and don't sell on the resistance. A break below the Support is considered to be a bearish sign.
<u>Resistance :</u>	A level above market price (previous highs) where sellers showed strength, in a bear market sell near the resistance level and don't buy on the support. A break above the resistance is considered to be a bullish sign.
<u>Stop Loss :</u>	Must exit the current position whenever the closing price is (1% to 2%) below the stop loss and confirmed by volume.
<u>Triggers :</u>	The range between the lower trigger and the upper is used for trading, break of any of them, the move would continue in the same direction.
<u>Yellow rows:</u>	indication that the stock closed below/above support, stop-loss, or resistance but the break is not confirmed yet.

Disclaimer

- This publication has been prepared by Blom Egypt Securities for information purposes only.
- It is not intended as an offer to buy or sell or a solicitation of an offer to buy or sell the securities mentioned.
- The information & opinions in this publication were prepared by Blom Egypt Securities research department accepts no liability or legal responsibility for losses & damages incurred arising from the use of this publication or its contents.

Blom Egypt Securities
Samir M. Azmi, CFTe, CETA
Senior Technical Analyst
samir.azmi@blomsecurities.com