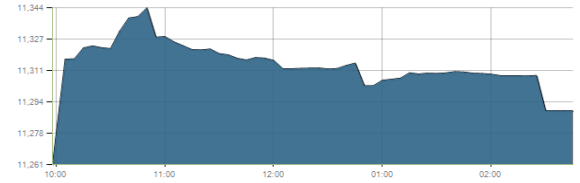




Indices intraday trends

EGX 30

مؤشر EGX 30  
اليوم - 14/03/2021

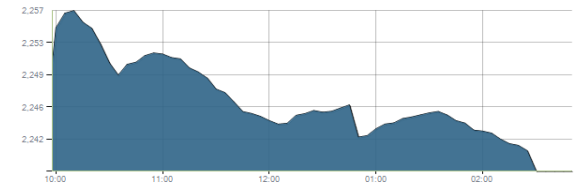


Key Levels

Support 1	11230	Resistance 1	11500-11450
Support 2	11100-11000	Resistance 2	11850

EGX 50 EWI

مؤشر EGX 50 EWI  
اليوم - 14/03/2021

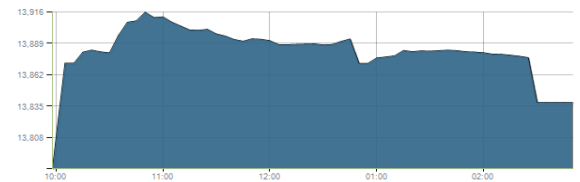


Key Levels

Close		2238.17	
Support 1	2230	Resistance 1	2300
Support 2	2150	Resistance 2	2360

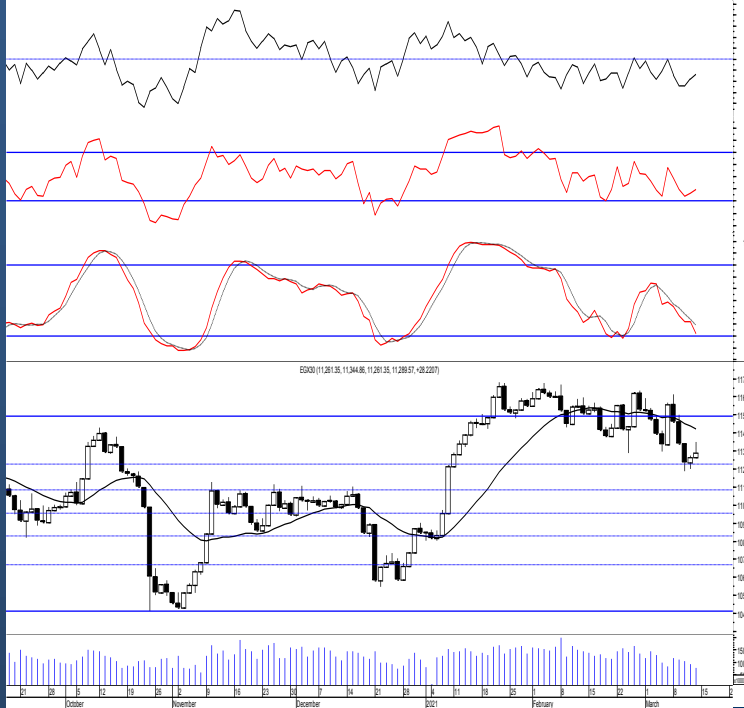
EGX 30 capped

مؤشر EGX 30 Capped  
اليوم - 14/03/2021



Key Levels

Close		13838.38	
Support 1	13470	Resistance 1	13850
Support 2	13170	Resistance 2	14200



Market Commentary:

The EGX30 remained quietly flat as balanced trading overwhelmed in most of the stocks leaving the index above the support level 11230 where we still expect rebounding process to take place from.

As we said, we believe that by reaching the mentioned level a good short term trading opportunity emerges keeping close stops placed and respected.

Yet, we recommend to react on every stock separately either that are trading near their supports or that managed to confirm breakout. Always keep close stops placed and respected to reduce market risk.

Close	11289.57	Trend	Dn.-Corr.
Pre. Close	11261.35	Target 1	---
Change	↑ 28.22 ( 0.25% )	Target 2	---
Day's range	11261.35 — 11344.86	Stop-loss	11230
52week's high	11675.69	52week's low	8113.82

Disclaimer

- This publication has been prepared by Blom Egypt Securities for information purposes only.
- It is not intended as an offer to buy or sell or a solicitation of an offer to buy or sell the securities mentioned.
- The information & opinions in this publication were prepared by Blom Egypt Securities research department accepts no liability or legal responsibility for losses & damages incurred arising from the use of this publication or its contents.

**Blom Egypt Securities**  
Samir M. Azmi, CFTE, CETA  
Senior Technical Analyst  
samir.azmi@blomsecurities.com

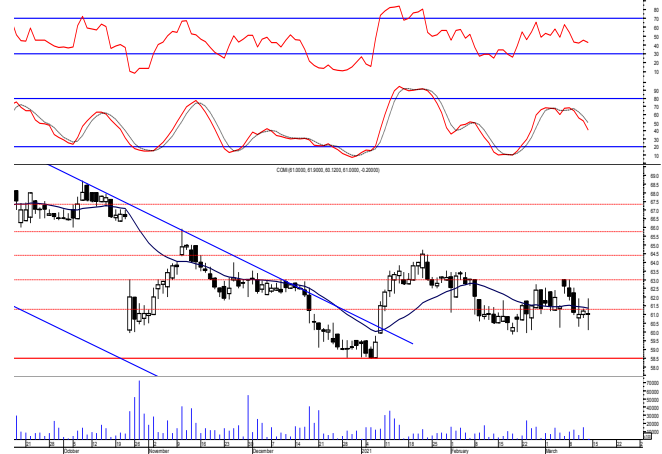


**Commercial international bank (COMI.CA):**

Prices remained narrowly flat as balanced trading dominated closing slightly negative. Levels are the same and so for our outlook.

New trades should wait for more confirmation while existing ones are advised to keep protective stop placed below 60.00.

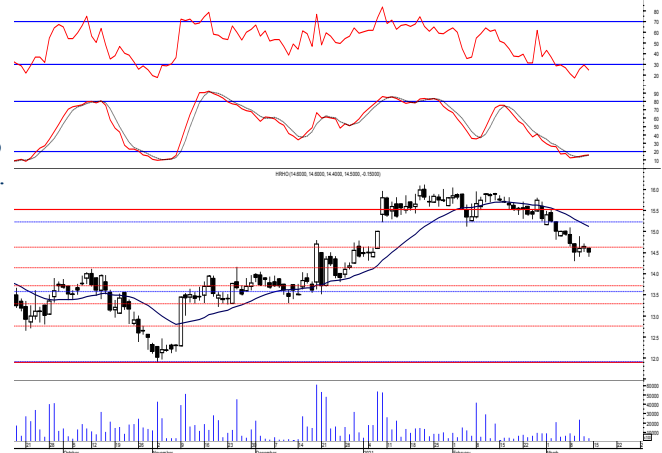
Support levels: 60.00, 58.50  
Resistance levels: 63.00, 64.50



**Hermes Holding (HRHO.CA):**

Prices remained hovering around our support level 14.60 closing slightly below which is needs confirmation so everything is considered in place. Notice that it is very important to defend the support level 14.60 to indicate the upside potential. Close stops should always be placed and respected to protect the downside.

Support levels: 14.60, 13.70  
Resistance levels: 15.25-15.55, 16.60-17.10

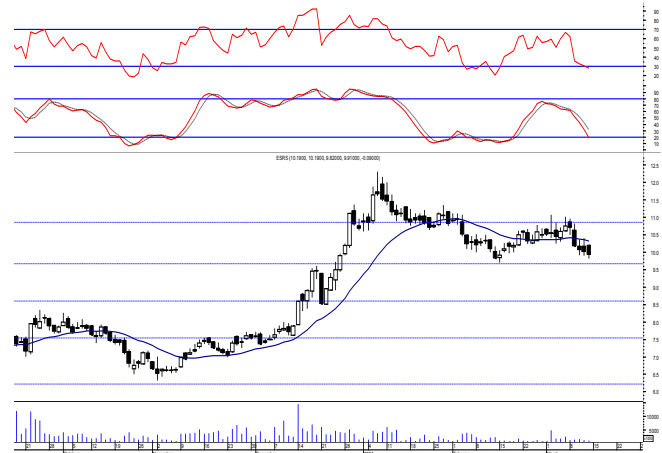


**El-Ezz steel rebar's' (ESRS.CA):**

Prices closed slightly negative the early decline reaching near our mentioned support level leaving levels unchanged and so for our outlook.

New positions are advised to wait for a confirmed buy signal to react safely on

Support levels: 9.80, 8.50  
Resistance levels: 10.60, 10.90



**Disclaimer**

- This publication has been prepared by Blom Egypt Securities for information purposes only.
- It is not intended as an offer to buy or sell or a solicitation of an offer to buy or sell the securities mentioned.
- The information & opinions in this publication were prepared by Blom Egypt Securities research department accepts no liability or legal responsibility for losses & damages incurred arising from the use of this publication or its contents.

**Blom Egypt Securities**  
**Samir M. Azmi, CFTe, CETA**  
Senior Technical Analyst  
samir.azmi@blomsecurities.com



Most active Stocks

Daily Technical Analysis Report

15 Mar, 2021

Stock Name (Reuters' Code)	Close	Trend	T1	T2	Support	Resistance	SL	Triggers	
								Lower	Upper
<b>Building Materials &amp; Construction</b>									
Arabian cement (ARCC.CA)	3.22	Dn.-Corr.	—	—	3.17	3.30	3.00	—	—
El Ezz Steel Rebar's (ESRS.CA)	9.91	Up-Corr.	—	—	9.80	10.60	9.80	—	—
GB auto (AUTO.CA)	3.93	Dn.-Corr.	—	—	3.75	3.97	3.48	—	—
Orascom construction (ORAS.CA)	93.02	Dn.-Corr.	—	—	88.00	93.00	81.00	—	—
South Valley Cement (SVCE.CA)	1.838	Bearish	—	—	1.73	1.85	—	—	—
Elsweddy Cables (SWDY.CA)	9.27	Bearish	—	—	9.15	9.65	—	—	—
Upper Egypt general contracting (UEGC.CA)	0.836	Bearish	—	—	0.815	0.88	—	—	—
<b>Chemicals</b>									
Abu-Qir fertilizers (ABUK.CA)	21.50	Dn.-Corr.	—	—	20.90	21.70	19.20	—	—
Egyptian Financial & Indust. (EFIC.CA)	12.07	Up-Corr.	—	—	12.00	12.50	11.50	—	—
Egyptian chemical industries-Kima (EGCH.CA)	3.91	Up-Corr.	—	—	3.80	4.00	3.60	—	—
<b>Communications</b>									
Orascom investment holding (OIH.CA)	0.305	Bullish	0.302 <sup>√</sup>	0.345	0.30	0.345	0.243	—	—
Telecom Egypt (ETEL.CA)	10.94	Bearish	—	—	10.80	11.40	—	—	—
<b>Financial Services</b>									
Abu Dhabi International Bank (ADIB.CA)	11.61	Dn.-Corr.	—	—	11.20	12.00	11.20	—	—
Arabian for investments & development (AIH.CA)	0.552	Bearish	—	—	0.536	0.59	—	—	—
Amer holding group (AMER.CA)	1.164	Dn.-Corr.	—	—	1.14	1.27	0.88	—	—
Commercial International Bank (COMI.CA)	61.00	Up-Corr.	—	—	60.00	63.00	58.50	—	—
Export development bank of Egypt (EXPA.CA)	12.70	Bearish	—	—	12.50	13.30	—	—	—
<b>Holding Companies</b>									
CI capital holding for financial investments (CICH.CA)	4.38	Bullish	4.87	5.25	4.45	4.87	4.15	—	—
Citadel capital (CCAP.CA)	1.37	Bearish	—	—	1.315	1.40	—	—	—
Hermes Holding (HRHO.CA)	14.50	Dn.-Corr.	—	—	14.60	15.55	14.60	—	—
Kuwaiti Holding (EKHO.CA)	1.159	Up-Corr.	—	—	1.11	1.17	1.04	—	—
MM group for industry & international trade (MTIE.CA)	11.25	Dn.-Corr.	—	—	10.85	11.40	10.10	—	—
Pioneers holding (PIOH.CA)	4.87	Dn.-Corr.	—	—	4.90	5.25	4.90	—	—
<b>Housing &amp; Real Estate</b>									
Egyptian For Tourism Resorts (EGTS.CA)	1.48	Bearish	—	—	1.45	1.52	1.35	—	—
Elshams housing (ELSH.CA)	4.55	Bearish	—	—	4.55	4.85	—	—	—
Emaar holding (EMFD.CA)	2.42	Bearish	—	—	2.25	2.45	—	—	—
Heliopolis housing & development (HELL.CA)	5.11	Bearish	—	—	5.00	5.30	—	—	—
Medinet Nasr for housing & Deve. (MNHD.CA)	3.78	Up-Corr.	—	—	3.75	3.97	3.50	—	—
6th. October Deve. Inv. (OCDI.CA)	17.00	Bullish	17.00 <sup>√</sup>	18.70	16.00	17.00	13.90	—	—
Palm hills development Co. (PHDC.CA)	1.691	Dn.-Corr.	—	—	1.66	1.71	1.53	—	—
Talaat Mustafa group holding (TMGH.CA)	6.52	Bearish	—	—	6.40	6.65	—	—	—
<b>Mining &amp; Gas</b>									
Alexandria Mineral Oils Co. (AMOC.CA)	3.03	Up-Corr.	—	—	3.00	3.27	2.75	—	—
Sidi Kerir Petrochemicals (SKPC.CA)	11.16	Dn.-Corr.	—	—	11.10	11.35	9.80	—	—
<b>Textiles &amp; Clothes</b>									
Arab Co. for asset management & Deve. (ACAMD.CA)	0.85	Up-Corr.	—	—	0.83	0.93	0.77	—	—
Arab cotton ginning (ACGC.CA)	2.84	Bearish	—	—	2.65	2.85	—	—	—
Oriental Weavers (ORWE.CA)	7.21	Up-Corr.	—	—	7.10	7.45	6.50	—	—
<b>Other Sectors</b>									
Egyptian Media Production City (MPRC.CA)	6.36	Bearish	—	—	6.40	6.80	—	—	—
Egyptian Transport - Egytrans (ETRS.CA)	11.70	Dn.-Corr.	—	—	11.60	12.40	11.00	—	—
Orascom holding development (ORHD.CA)	6.00	Bullish	6.10	6.45	5.65	6.45	4.70	—	—
United Arab Shipping (UASG.CA)	1.00	Bearish	—	—	0.97	1.05	—	—	—

Disclaimer

- This publication has been prepared by Blom Egypt Securities for information purposes only.
- It is not intended as an offer to buy or sell or a solicitation of an offer to buy or sell the securities mentioned.
- The information & opinions in this publication were prepared by Blom Egypt Securities research department accepts no liability or legal responsibility for losses & damages incurred arising from the use of this publication or its contents.

**Blom Egypt Securities**  
Samir M. Azmi, CFTe, CETA  
Senior Technical Analyst  
samir.azmi@blomsecurities.com



### Guidelines for using BLOM daily Technical Analysis Report

<b><u>Close:</u></b>	Is recorded as the last trade in the session.
<b><u>Trend:</u></b>	
<b>Bullish :</b>	The strategy is to buy the dips.
<b>Bearish :</b>	The strategy is to sell the rallies.
<b>Flat :</b>	The strategy is to trade the range between the triggers.
<b>Up-Corr. :</b>	A move against the major trend when it is down.
<b>Dn.-Corr. :</b>	A move against the major trend when it is up.
<b><u>Targets :</u></b>	Take some profit by reducing a portion of the position whenever a price target is been hit.
<b><u>Support :</u></b>	A level below market price (previous lows) where buyers showed strength, in a bull market buy near the support and don't sell on the resistance. A break below the Support is considered to be a bearish sign.
<b><u>Resistance :</u></b>	A level above market price (previous highs) where sellers showed strength, in a bear market sell near the resistance level and don't buy on the support. A break above the resistance is considered to be a bullish sign.
<b><u>Stop Loss :</u></b>	Must exit the current position whenever the closing price is (1% to 2%) below the stop loss and confirmed by volume.
<b><u>Triggers :</u></b>	The range between the lower trigger and the upper is used for trading, break of any of them, the move would continue in the same direction.
<b><u>Yellow rows:</u></b>	indication that the stock closed below/above support, stop-loss, or resistance but the break is not confirmed yet.

#### Disclaimer

- This publication has been prepared by Blom Egypt Securities for information purposes only.
- It is not intended as an offer to buy or sell or a solicitation of an offer to buy or sell the securities mentioned.
- The information & opinions in this publication were prepared by Blom Egypt Securities research department accepts no liability or legal responsibility for losses & damages incurred arising from the use of this publication or its contents.

**Blom Egypt Securities**  
**Samir M. Azmi, CFTe, CETA**  
**Senior Technical Analyst**  
[samir.azmi@blomsecurities.com](mailto:samir.azmi@blomsecurities.com)