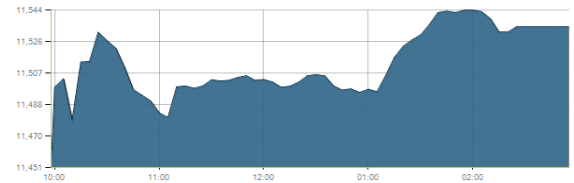




Indices intraday trends

EGX 30

مؤشر EGX 30
اليوم - 09/12/2021

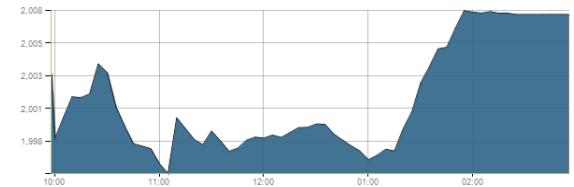


Key Levels

Support 1	11320-11200	Resistance 1	11675
Support 2	11100	Resistance 2	12250

EGX 50 EWI

مؤشر EGX 50 EWI
اليوم - 09/12/2021

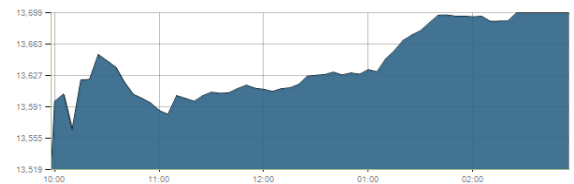


Key Levels

Close		2007.49	
Support 1	1970	Resistance 1	2060
Support 2	1860	Resistance 2	2150

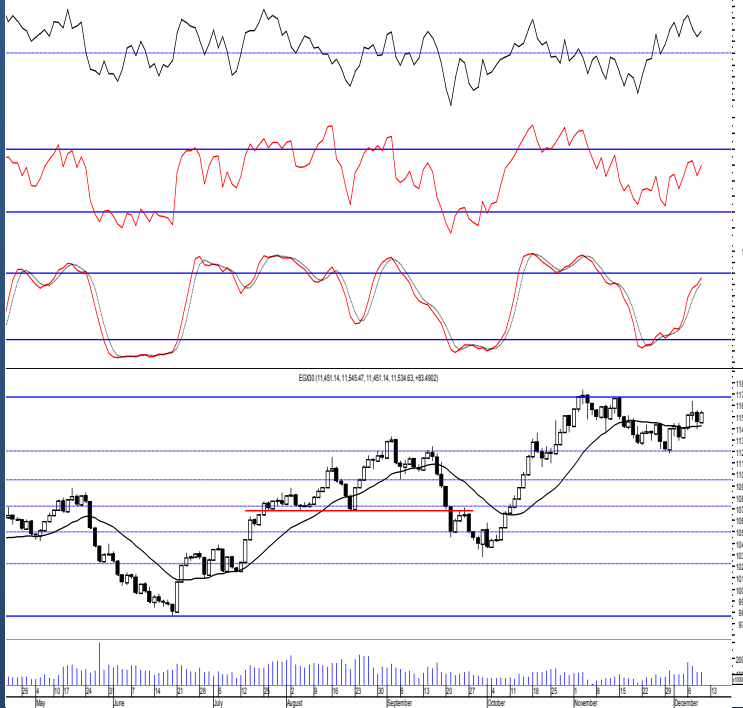
EGX 30 capped

مؤشر EGX 30 Capped
اليوم - 09/12/2021



Key Levels

Close		13699.34	
Support 1	13550	Resistance 1	13800
Support 2	13470	Resistance 2	14150



Market Commentary:

The EGX30 witnessed an upward move after managing to defend the minor support level 11450 as most of the stocks inched higher closing near the high, the move will likely continue higher to test our major resistance level 11675. Yet, levels are the same and so for our outlook Trading should be very selective and conservative keeping close stops placed and respected to reduce market risk. Notice that the mentioned support zone should be respected in any decline as any violation to it will indicate that bears are in control further decline will follow.

Close	11534.63	Trend	Flat
Pre. Close	11451.14	Target 1	—
Change	↑ 83.49 (0.73%)	Target 2	—
Day's range	1451.14 — 11545.47	Stop-loss	10680
52week's high	11675.69	52week's low	9769.18.18

Disclaimer

- This publication has been prepared by Blom Egypt Securities for information purposes only.
- It is not intended as an offer to buy or sell or a solicitation of an offer to buy or sell the securities mentioned.
- The information & opinions in this publication were prepared by Blom Egypt Securities research department accepts no liability or legal responsibility for losses & damages incurred arising from the use of this publication or its contents.

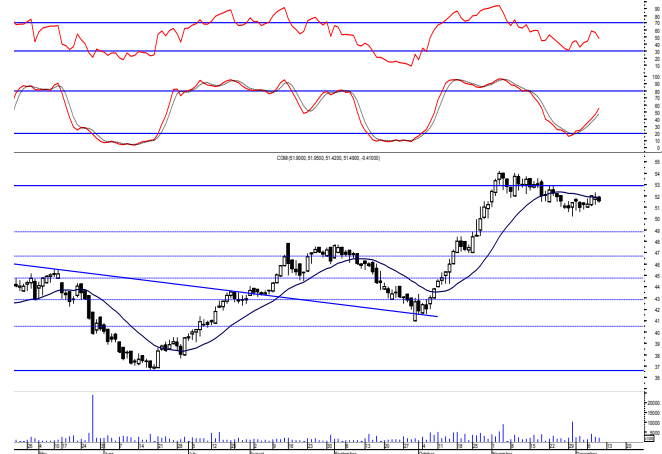
Blom Egypt Securities
Samir M. Azmi, CFTe, CETA
Senior Technical Analyst
samir.azmi@blomsecurities.com



Commercial international bank (COMI.CA):

Prices remained flat closing in red again below the resistance level 51.60 keeping levels unchanged and so for our outlook. As we said, confirming below 51.60 will lead to further decline to the coming support 49.80 so watch carefully and wait for a confirmed buy signal to react safely on.

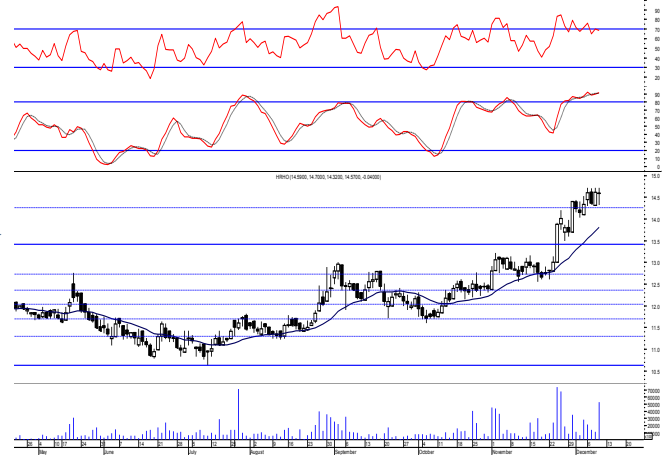
Support levels: 49.80, 46.70
Resistance levels: 51.60, 52.80



Hermes Holding (HRHO.CA):

Prices remained flat closing slightly negative above the important resistance level 14.45 but still needs confirmation so everything is considered in place. We recommend to partially take profit on current levels bearing in mind that clearing the important resistance level 14.45 will easily push prices higher to our 2nd target 15.65 and may extend to the resistance level 16.35.

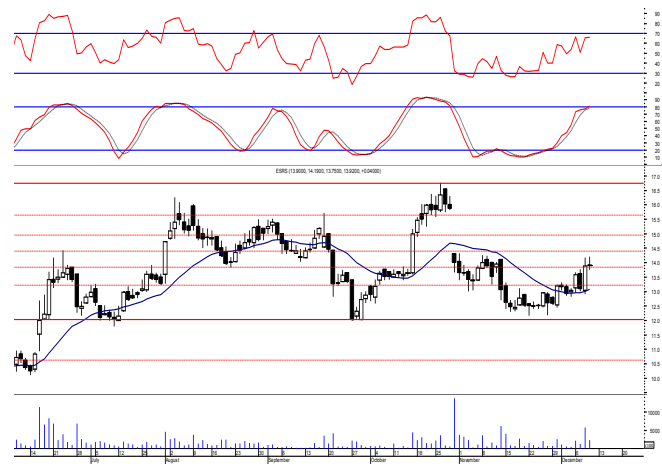
Support levels: 13.40, (12-75-12.60)
Resistance levels: 14.45, 16.35



El-Ezz steel rebar's' (ESRS.CA):

Prices failed to continue the early rally attempt as selling pressure remained in control closing nearer the low slightly above resistance level 13.80 which still needs confirmation. Confirming above 13.80 leads to further climbing to a4.50 where short term trades opportunity emerges. The support level 12.00 should always be watched in any decline to avoid any risk.

Support levels: 13.20, 12.00
Resistance levels: 13.80, 14.50



Disclaimer

- This publication has been prepared by Blom Egypt Securities for information purposes only.
- It is not intended as an offer to buy or sell or a solicitation of an offer to buy or sell the securities mentioned.
- The information & opinions in this publication were prepared by Blom Egypt Securities research department accepts no liability or legal responsibility for losses & damages incurred arising from the use of this publication or its contents.

Blom Egypt Securities
Samir M. Azmi, CFTe, CETA
Senior Technical Analyst
samir.azmi@blomsecurities.com



Most active Stocks

Daily Technical Analysis Report

12 Dec, 2021

Stock Name (Reuters' Code)	Close	Trend	T1	T2	Support	Resistance	SL	Triggers	
								Lower	Upper
Building Materials & Construction									
Arabian cement (ARCC.CA)	3.71	Up-Corr.	—	—	3.45	3.80	3.20	—	—
El Ezz Steel Rebar's (ESRS.CA)	13.92	Up-Corr.	—	—	13.20	13.80	12.00	—	—
GB auto (AUTO.CA)	4.82	Bullish	4.95√	5.30	4.65	4.95	4.35	—	—
Orascom construction (ORAS.CA)	72.01	Dn.-Corr.	—	—	70.90	72.60	68.50	—	—
South Valley Cement (SVCE.CA)	1.39	Up-Corr.	—	—	1.32	1.45	1.243	—	—
Elsweddy Cables (SWDY.CA)	9.16	UP-Corr.	—	—	8.70	9.20	7.90	—	—
Upper Egypt general contracting (UEGC.CA)	0.657	Up-Corr.	—	—	0.65	0.69	0.57	—	—
Chemicals									
Abu-Qir fertilizers (ABUK.CA)	22.11	Up-Corr.	—	—	21.30	22.90	17.00	—	—
Egyptian Financial & Indust. (EFIC.CA)	13.18	Up-Corr.	—	—	12.50	13.70	11.40	—	—
Egyptian chemical industries-Kima (EGCH.CA)	3.57	Up-Corr.	—	—	3.50	3.90	3.00	—	—
Communications									
Fawry for banking tech. & electronic payment (FWRY.CA)	10.98	Bearish	—	—	10.55	11.80	—	—	—
Orascom investment holding (OIH.CA)	0.235	Up-Corr.	—	—	0.23	0.26	0.20	—	—
Telecom Egypt (ETEL.CA)	15.90	Bullish	16.05	16.80	15.20	16.05	14.00	—	—
Financial Services									
Abu Dhabi International Bank (ADIB.CA)	15.80	Up-Corr.	—	—	15.50	16.20	12.60	—	—
Arabian for investments & development (AIH.CA)	0.34	Up-Corr.	—	—	0.335	0.37	0.305	—	—
Amer holding group (AMER.CA)	0.929	Up-Corr.	—	—	0.85	0.95	0.85	—	—
Commercial International Bank (COMI.CA)	51.49	Dn.-Corr.	—	—	49.80	51.60	46.60	—	—
Export development bank of Egypt (EXPA.CA)	9.08	Up-Corr.	—	—	8.60	9.20	8.60	—	—
Holding Companies									
Citadel capital (CCAP.CA)	1.18	Up-Corr.	—	—	1.16	1.23	1.09	—	—
Hermes Holding (HRHO.CA)	14.57	Bullish	14.25√	15.20	13.40	14.45	11.25	—	—
Kuwaiti Holding (EKHO.CA)	1.36	Dn.-Corr.	—	—	1.35	1.395	1.22	—	—
MM group for industry & international trade (MTIE.CA)	6.25	Up-Corr.	—	—	6.20	6.45	5.60	—	—
Orascom financial holding (OFH.CA)	0.215	Bearish	—	—	0.195	0.23	—	—	—
Housing & Real Estate									
Egyptian For Tourism Resorts (EGTS.CA)	1.386	Bearish	—	—	1.21	1.47	—	—	—
Elshams housing (ELSH.CA)	8.76	Up-Corr.	—	—	8.30	9.50	7.70	—	—
Emaar holding (EMFD.CA)	2.66	Dn.-Corr.	—	—	2.64	2.77	2.28	—	—
Heliopolis housing & development (HELL.CA)	6.30	Dn.-Corr.	—	—	5.90	6.45	5.50	—	—
Medinet Nasr for housing & Deve. (MNHD.CA)	2.59	Up-Corr.	—	—	2.50	2.65	2.16	—	—
6th. October Deve. Inv. (OCDI.CA)	19.01	Dn.-Corr.	—	—	18.50	19.50	16.90	—	—
Palm hills development Co. (PHDC.CA)	1.812	Up-Corr.	—	—	1.72	1.88	1.72	—	—
Talaat Mustafa group holding (TMGH.CA)	8.70	Bullish	8.20√	8.90√	8.20	8.90	6.90	—	—
Mining & Gas									
Alexandria Mineral Oils Co. (AMOC.CA)	3.70	Up-Corr.	—	—	3.50	3.77	3.33	—	—
Sidi Kerir Petrochemicals (SKPC.CA)	7.27	Up-Corr.	—	—	7.20	7.75	6.30	—	—
Textiles & Clothes									
Arab Co. for asset management & Deve. (ACAMD.CA)	0.47	Up-Corr.	—	—	0.425	0.50	0.35	—	—
Arab cotton ginning (ACGC.CA)	1.698	Up-Corr.	—	—	1.66	1.75	1.455	—	—
Oriental Weavers (ORWE.CA)	8.48	Dn.-Corr.	—	—	8.05	8.55	7.50	—	—
Other Sectors									
Egyptian Media Production City (MPRC.CA)	4.93	Up-Corr.	—	—	4.70	5.10	4.20	—	—
Egyptian Transport - Egytrans (ETRS.CA)	10.94	Up-Corr.	—	—	9.80	11.30	9.80	—	—
Orascom holding development (ORHD.CA)	5.80	Up-Corr.	—	—	5.55	5.80	5.15	—	—
United Arab Shipping (UASG.CA)	0.881	Up-Corr.	—	—	0.80	0.925	0.80	—	—

Disclaimer

- This publication has been prepared by Blom Egypt Securities for information purposes only.
- It is not intended as an offer to buy or sell or a solicitation of an offer to buy or sell the securities mentioned.
- The information & opinions in this publication were prepared by Blom Egypt Securities research department accepts no liability or legal responsibility for losses & damages incurred arising from the use of this publication or its contents.

Blom Egypt Securities
Samir M. Azmi, CFTe, CETA
Senior Technical Analyst
samir.azmi@blomsecurities.com



Guidelines for using BLOM daily Technical Analysis Report

<u>Close:</u>	Is recorded as the last trade in the session.
<u>Trend:</u>	
Bullish :	The strategy is to buy the dips.
Bearish :	The strategy is to sell the rallies.
Flat :	The strategy is to trade the range between the triggers.
Up-Corr. :	A move against the major trend when it is down.
Dn.-Corr. :	A move against the major trend when it is up.
<u>Targets :</u>	Take some profit by reducing a portion of the position whenever a price target is been hit.
<u>Support :</u>	A level below market price (previous lows) where buyers showed strength, in a bull market buy near the support and don't sell on the resistance. A break below the Support is considered to be a bearish sign.
<u>Resistance :</u>	A level above market price (previous highs) where sellers showed strength, in a bear market sell near the resistance level and don't buy on the support. A break above the resistance is considered to be a bullish sign.
<u>Stop Loss :</u>	Must exit the current position whenever the closing price is (1% to 2%) below the stop loss and confirmed by volume.
<u>Triggers :</u>	The range between the lower trigger and the upper is used for trading, break of any of them, the move would continue in the same direction.
<u>Yellow rows:</u>	indication that the stock closed below/above support, stop-loss, or resistance but the break is not confirmed yet.

Disclaimer

- This publication has been prepared by Blom Egypt Securities for information purposes only.
- It is not intended as an offer to buy or sell or a solicitation of an offer to buy or sell the securities mentioned.
- The information & opinions in this publication were prepared by Blom Egypt Securities research department accepts no liability or legal responsibility for losses & damages incurred arising from the use of this publication or its contents.

Blom Egypt Securities
Samir M. Azmi, CFTe, CETA
Senior Technical Analyst
samir.azmi@blomsecurities.com