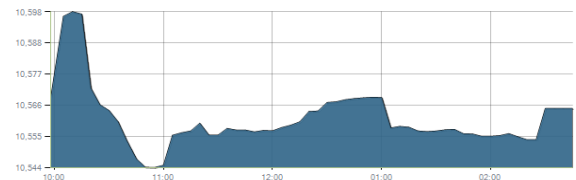




Indices intraday trends

EGX 30

مؤشر EGX 30
اليوم - 01/04/2021

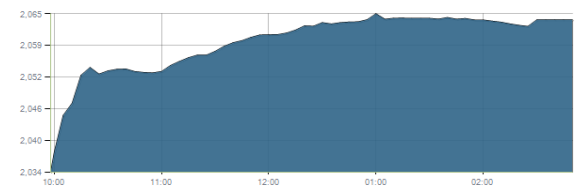


Key Levels

Support 1	10700	Resistance 1	11000
Support 2	10540	Resistance 2	11230

EGX 50 EWI

مؤشر EGX 50 EWI
اليوم - 01/04/2021

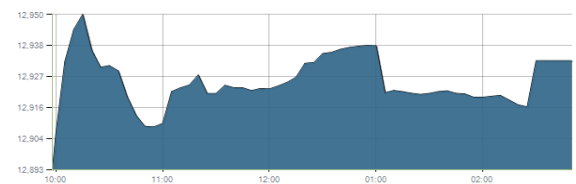


Key Levels

Close		2063.43	
Support 1	2050	Resistance 1	2150
Support 2	1990	Resistance 2	22230

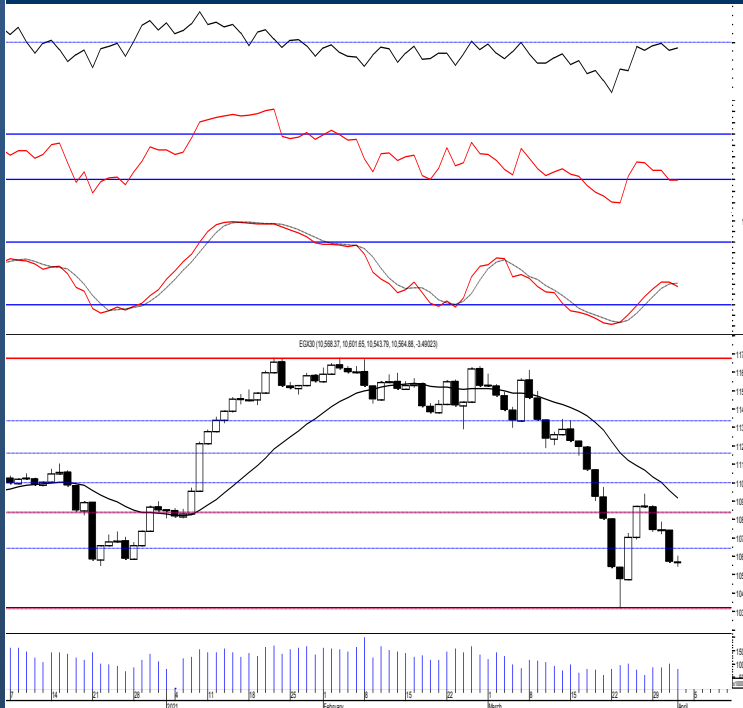
EGX 30 capped

مؤشر EGX 30 Capped
اليوم - 01/04/2021



Key Levels

Close		12932.84	
Support 1	12870	Resistance 1	13170
Support 2	12640	Resistance 2	13370



Market Commentary:

The EGX30 remained quietly flat in a narrow trading range after balanced trading took place in most of the stocks closing slightly negative leaving the index within the same range and so for our outlook.

New opened short term trades and old positions are advised to watch their stops very carefully as the violation of the mentioned level elevates the market risk which increases the downside potential.

New trades should wait for a confirmed buy signal to react safely on.

Close	10564.88	Trend	Up-Corr.
Pre. Close	10568.37	Target 1	—
Change	↓ 3.49 (0.03%)	Target 2	—
Day's range	10601.65 — 10543.79	Stop-loss	10414.00
52week's high	11675.69	52week's low	8113.82

Disclaimer

- This publication has been prepared by Blom Egypt Securities for information purposes only.
- It is not intended as an offer to buy or sell or a solicitation of an offer to buy or sell the securities mentioned.
- The information & opinions in this publication were prepared by Blom Egypt Securities research department accepts no liability or legal responsibility for losses & damages incurred arising from the use of this publication or its contents.

Blom Egypt Securities
Samir M. Azmi, CFTe, CETA
Senior Technical Analyst
samir.azmi@blomsecurities.com



Commercial international bank (COMI.CA):

Prices confirmed the violating of the major support level 58.50 turning it into resistance and therefore turning the short term trend into down.

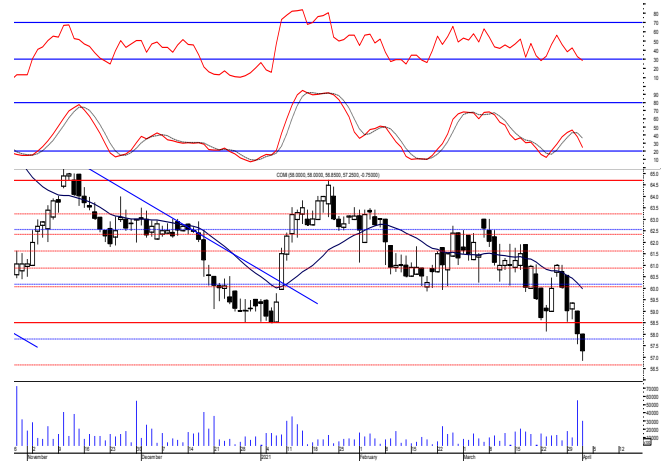
As we said, bears now have the short and medium term technical advantage.

Further decline now is expected to 56.70 & may extend to 54.60.

We recommend to stay on cash and wait fro a confirmed buy signal to react safely on.

Support levels: 56.70, 54.60

Resistance levels: 58.50, 60.00



Hermes Holding (HRHO.CA):

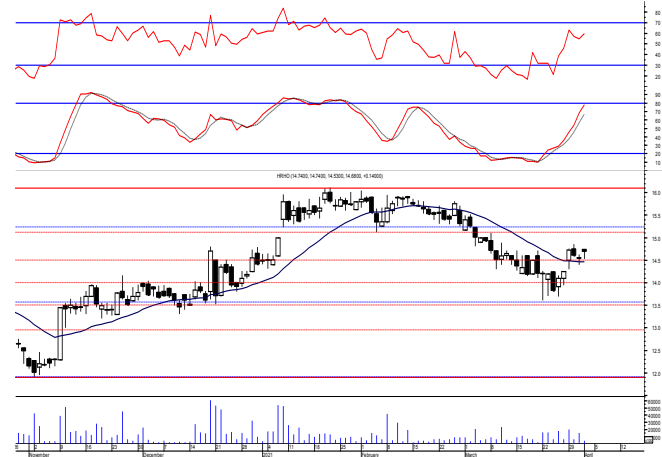
Prices reversed Wednesday's performance gapping up ahead of trading and continued narrowly flat hovering around the support level 14.60 closing above keeping levels the same and so for our outlook.

Yet, rally is still expected which as we said will probably reach our coming mentioned resistance zone.

Close stops should always be placed and respected to protect the downside.

Support levels: 14.60, 13.50

Resistance levels: 15.25-15.55, 16.10



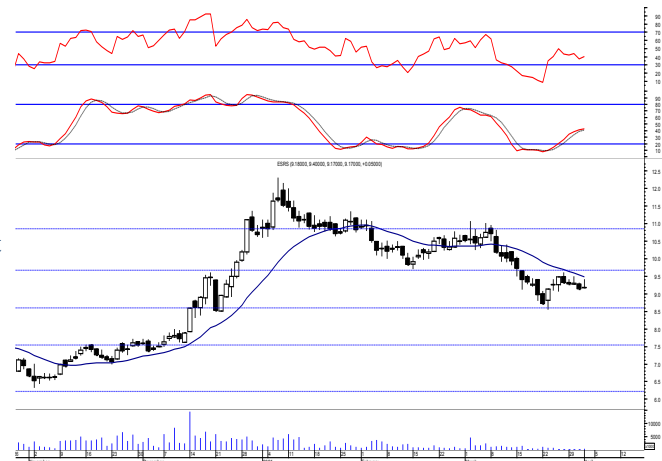
El-Ezz steel rebar's' (ESRS.CA):

Prices remained narrowly flat closing within the same range as quiet trading performance dominated keeping our outlook the same.

Short term trades may be opened on current levels as further climbing will probably take place testing the resistance level 9.80 where we may use for quick trading bearing in mind that close stops should be placed and respected

Support levels: 8.50, 7.50

Resistance levels: 9.80, 10.60



Disclaimer

- This publication has been prepared by Blom Egypt Securities for information purposes only.
- It is not intended as an offer to buy or sell or a solicitation of an offer to buy or sell the securities mentioned.
- The information & opinions in this publication were prepared by Blom Egypt Securities research department accepts no liability or legal responsibility for losses & damages incurred arising from the use of this publication or its contents.

Blom Egypt Securities
Samir M. Azmi, CFTe, CETA
Senior Technical Analyst
samir.azmi@blomsecurities.com



Most active Stocks

Daily Technical Analysis Report

4 Apr, 2021

Stock Name (Reuters' Code)	Close	Trend	T1	T2	Support	Resistance	SL	Triggers	
								Lower	Upper
Building Materials & Construction									
Arabian cement (ARCC.CA)	2.93	Bearish	—	—	2.75	3.00	—	—	—
El Ezz Steel Rebar's (ESRS.CA)	9.17	Bearish	—	—	8.50	9.80	—	—	—
GB auto (AUTO.CA)	3.82	Dn.-Corr.	—	—	3.77	3.97	3.65	—	—
Orascom construction (ORAS.CA)	89.88	Dn.-Corr.	—	—	88.00	93.00	81.00	—	—
South Valley Cement (SVCE.CA)	1.60	Bearish	—	—	1.44	1.63	—	—	—
Elsweddy Cables (SWDY.CA)	9.01	Up-Corr.	—	—	8.50	9.15	8.50	—	—
Upper Egypt general contracting (UEGC.CA)	0.789	Up-Corr.	—	—	0.725	0.815	0.67	—	—
Chemicals									
Abu-Qir fertilizers (ABUK.CA)	21.05	Dn.-Corr.	—	—	20.90	23.00	19.20	—	—
Egyptian Financial & Indust. (EFIC.CA)	10.96	Up-Corr.	—	—	10.60	11.50	9.60	—	—
Egyptian chemical industries-Kima (EGCH.CA)	3.40	Bearish	—	—	3.05	3.40	—	—	—
Communications									
Orascom investment holding (OIH.CA)	0.285	Dn.-Corr.	—	—	0.275	0.302	0.243	—	—
Telecom Egypt (ETEL.CA)	11.30	Up-Corr.	—	—	10.85	11.40	10.10	—	—
Financial Services									
Abu Dhabi International Bank (ADIB.CA)	11.00	Bearish	—	—	10.70	11.20	—	—	—
Arabian for investments & development (AIH.CA)	0.507	Up-Corr.	—	—	0.46	0.515	0.43	—	—
Amer holding group (AMER.CA)	0.85	Bearish	—	—	0.75	0.87	—	—	—
Commercial International Bank (COMI.CA)	57.25	Bearish	—	—	56.70	58.50	—	—	—
Export development bank of Egypt (EXPA.CA)	12.20	Up-Corr.	—	—	11.90	12.80	11.20	—	—
Holding Companies									
Citadel capital (CCAP.CA)	1.25	Up-Corr.	—	—	1.21	1.29	1.12	—	—
Hermes Holding (HRHO.CA)	14.68	Up-Corr.	—	—	14.60	15.55	14.60	—	—
Kuwaiti Holding (EKHO.CA)	1.16	Up-Corr.	—	—	1.11	1.17	1.04	—	—
MM group for industry & international trade (MTIE.CA)	9.83	Up-Corr.	—	—	9.30	10.15	8.70	—	—
Orascom financial holding (OFH.CA)	0.322	Up-Corr.	—	—	0.305	0.33	0.275	—	—
Pioneers holding (PIOH.CA)	4.52	Up-Corr.	—	—	4.50	4.90	4.15	—	—
Housing & Real Estate									
Egyptian For Tourism Resorts (EGTS.CA)	1.412	Up-Corr.	—	—	1.35	1.425	1.25	—	—
Elshams housing (ELSH.CA)	4.25	Up-Corr.	—	—	4.15	4.40	4.00	—	—
Emaar holding (EMFD.CA)	2.29	Bearish	—	—	2.25	2.45	—	—	—
Heliopolis housing & development (HELL.CA)	5.16	Up-Corr.	—	—	5.00	5.25	4.30	—	—
Medinet Nasr for housing & Deve. (MNHD.CA)	3.82	Up-Corr.	—	—	3.75	3.97	3.50	—	—
6th. October Deve. Inv. (OCDI.CA)	15.91	Bullish	17.00√	18.70	16.00	17.00	13.90	—	—
Palm hills development Co. (PHDC.CA)	1.62	Dn.-Corr.	—	—	1.53	1.67	1.53	—	—
Talaat Mustafa group holding (TMGH.CA)	6.20	Bearish	—	—	6.00	6.45	—	—	—
Mining & Gas									
Alexandria Mineral Oils Co. (AMOC.CA)	2.60	Up-Corr.	—	—	2.52	2.67	2.52	—	—
Sidi Kerir Petrochemicals (SKPC.CA)	10.14	Dn.-Corr.	—	—	9.80	10.60	9.80	—	—
Textiles & Clothes									
Arab Co. for asset management & Deve. (ACAMD.CA)	0.791	Up-Corr.	—	—	0.73	0.835	0.73	—	—
Arab cotton ginning (ACGC.CA)	2.031	Bearish	—	—	1.90	2.10	—	—	—
Oriental Weavers (ORWE.CA)	7.39	Up-Corr.	—	—	7.00	7.45	6.50	—	—
Other Sectors									
Egyptian Media Production City (MPRC.CA)	5.63	Bearish	—	—	5.10	5.65	—	—	—
Egyptian Transport - Egytrans (ETRS.CA)	11.80	Up-Corr.	—	—	11.50	12.15	10.10	—	—
Orascom holding development (ORHD.CA)	5.27	Dn.-Corr.	—	—	5.30	5.65	4.70	—	—
United Arab Shipping (UASG.CA)	0.86	Up-Corr.	—	—	0.83	0.905	0.78	—	—

Disclaimer

- This publication has been prepared by Blom Egypt Securities for information purposes only.
- It is not intended as an offer to buy or sell or a solicitation of an offer to buy or sell the securities mentioned.
- The information & opinions in this publication were prepared by Blom Egypt Securities research department accepts no liability or legal responsibility for losses & damages incurred arising from the use of this publication or its contents.

Blom Egypt Securities
Samir M. Azmi, CFTe, CETA
Senior Technical Analyst
samir.azmi@blomsecurities.com



Guidelines for using BLOM daily Technical Analysis Report

<u>Close:</u>	Is recorded as the last trade in the session.
<u>Trend:</u>	
Bullish :	The strategy is to buy the dips.
Bearish :	The strategy is to sell the rallies.
Flat :	The strategy is to trade the range between the triggers.
Up-Corr. :	A move against the major trend when it is down.
Dn.-Corr. :	A move against the major trend when it is up.
<u>Targets :</u>	Take some profit by reducing a portion of the position whenever a price target is been hit.
<u>Support :</u>	A level below market price (previous lows) where buyers showed strength, in a bull market buy near the support and don't sell on the resistance. A break below the Support is considered to be a bearish sign.
<u>Resistance :</u>	A level above market price (previous highs) where sellers showed strength, in a bear market sell near the resistance level and don't buy on the support. A break above the resistance is considered to be a bullish sign.
<u>Stop Loss :</u>	Must exit the current position whenever the closing price is (1% to 2%) below the stop loss and confirmed by volume.
<u>Triggers :</u>	The range between the lower trigger and the upper is used for trading, break of any of them, the move would continue in the same direction.
<u>Yellow rows:</u>	indication that the stock closed below/above support, stop-loss, or resistance but the break is not confirmed yet.

Disclaimer

- This publication has been prepared by Blom Egypt Securities for information purposes only.
- It is not intended as an offer to buy or sell or a solicitation of an offer to buy or sell the securities mentioned.
- The information & opinions in this publication were prepared by Blom Egypt Securities research department accepts no liability or legal responsibility for losses & damages incurred arising from the use of this publication or its contents.

Blom Egypt Securities
Samir M. Azmi, CFTe, CETA
Senior Technical Analyst
samir.azmi@blomsecurities.com