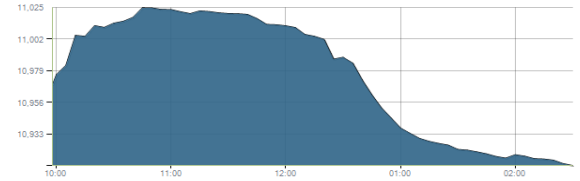




Indices intraday trends

EGX 30

مؤشر EGX 30
اليوم - 21/09/2020

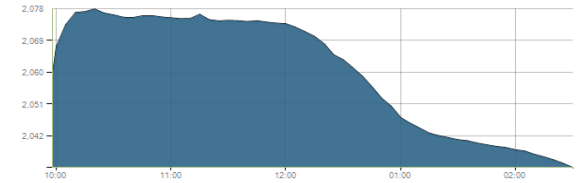


Key Levels

Support 1	11100-10900	Resistance 1	12000-12100
Support 2	10700	Resistance 2	12500

EGX 50 EWI

مؤشر EGX 50 EWI
اليوم - 21/09/2020

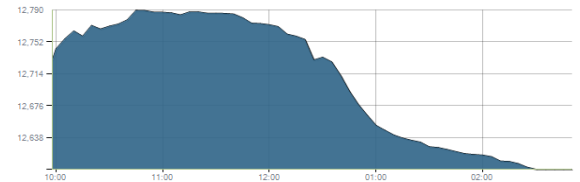


Key Levels

Close		2033.10	
Support 1	1945	Resistance 1	2055
Support 2	1870	Resistance 2	2130

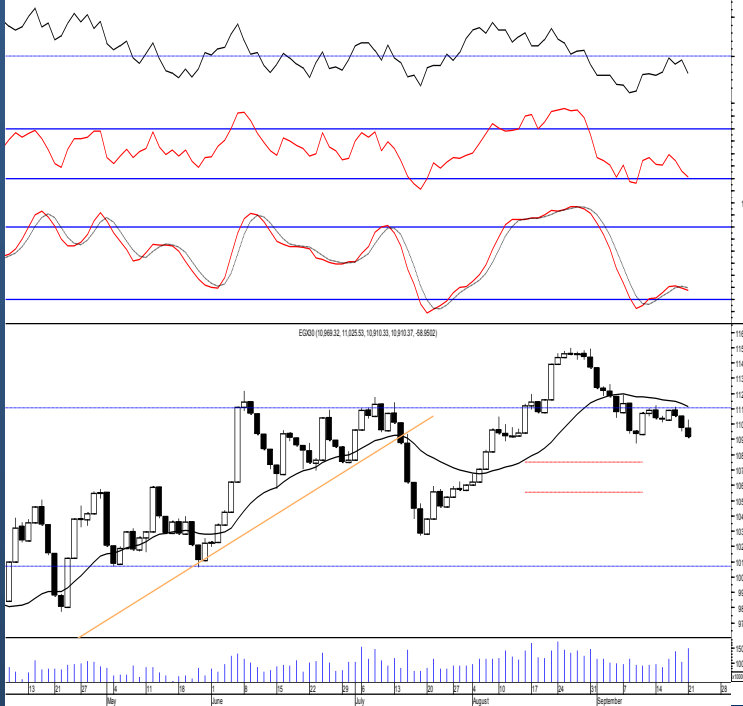
EGX 30 capped

مؤشر EGX 30 Capped
اليوم - 21/09/2020



Key Levels

Close		12599.69	
Support 1	12320	Resistance 1	13050
Support 2	12100	Resistance 2	13500



Market Commentary:

The EGX30 closed in red after failing to continue the early rally attempt as selling pressure dominated pulling the index closer to lower boundary of the mentioned support zone where we should watch. As we said, trading volumes should increase to prove real buying strength otherwise the market will remain under stress. Short term trend is up and we still expect containing the recent profit taking process and continue higher to the 2nd target level 11800 where we recommend to trade partially on. Bear in mind that the coming resistance zone will likely be reached where we may continue trading on. Held positions should keep close protective stops to maximize profits.

Close	10910.37	Trend	Bullish
Pre. Close	10969.32	Target 1	11500
Change	↓ 58.95 (0.54%)	Target 2	11800
Day's range	11025.53 — 10910.33	Stop-loss	10000
52week's high	15127.26	52week's low	8113.82

Disclaimer

- This publication has been prepared by Blom Egypt Securities for information purposes only.
- It is not intended as an offer to buy or sell or a solicitation of an offer to buy or sell the securities mentioned.
- The information & opinions in this publication were prepared by Blom Egypt Securities research department accepts no liability or legal responsibility for losses & damages incurred arising from the use of this publication or its contents.

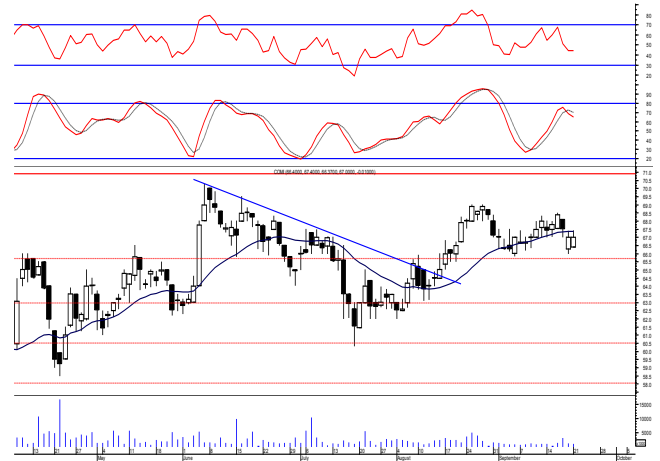
Blom Egypt Securities
Samir M. Azmi, CFTe, CETA
Senior Technical Analyst
samir.azmi@blomsecurities.com



Commercial international bank (COMI.CA):

Prices again gapped down approaching the support level 66.00 before rebounding process takes place gaining back most of the losses closing slightly below the support level 67.50 which still needs confirmation so levels are unchanged. Yet, bulls still have the near term technical advantage as long as sustaining the support level 66.00 in which we believe that falling near will represent a good buying opportunity. Overall, we still expect reaching the second level 69.50 where we may trade partially on bearing in mind that the rally has the strong potential to continue to the resistance level 71.00.

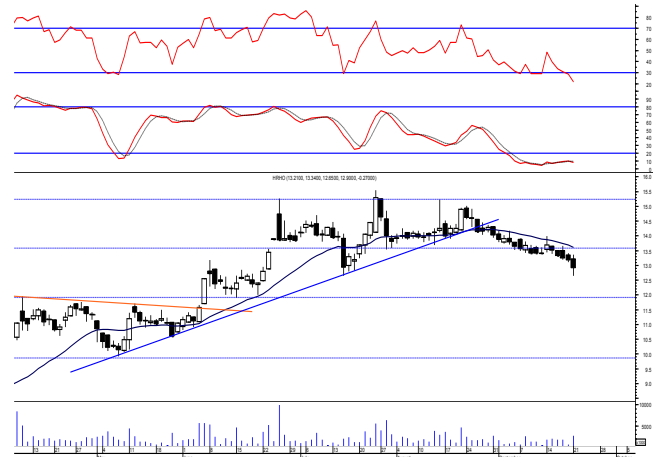
Support levels: 67.50, 66.00
Resistance levels: 69.50, 71.00



Hermes Holding (HRHO.CA):

Prices witnessed a downward move reaching our support level 12.65 where rebounding process took place from closing near the session's mid range. As we said, we recommend to stay on cash and wait for a confirmed buy signal to react safely on. Any held positions should watch the mentioned support as it represents an important defensive line.

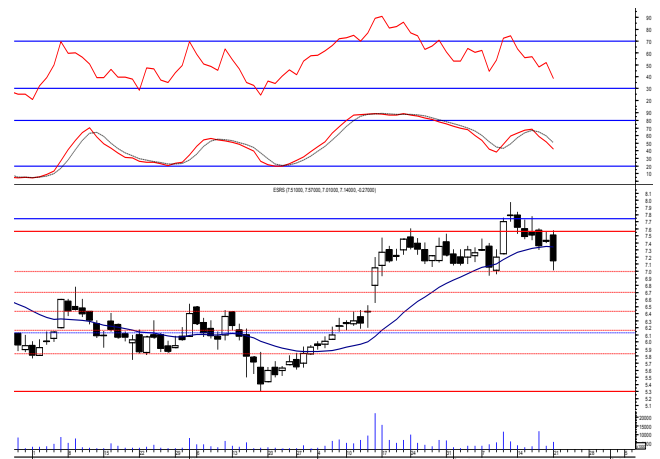
Support levels: 12.65, 11.90
Resistance levels: 13.50, 14.00



El-Ezz steel rebar's' (ESRS.CA):

Prices dived lower approaching the support level 7.00 where the decline was successfully halted so levels are the same. Our outlook is the same, increasing trading volume witnessed recently is significant which still suggests strong potential breakout but price action should confirm. As we said we may trade partially on as market risk now is lowered specially that trading volumes significantly increased. Traded positions may close the trade near the mentioned support keeping close stop placed and respected

Support levels: 7.00, 6.70
Resistance levels: 7.55-7.75, 8.25



Disclaimer

- This publication has been prepared by Blom Egypt Securities for information purposes only.
- It is not intended as an offer to buy or sell or a solicitation of an offer to buy or sell the securities mentioned.
- The information & opinions in this publication were prepared by Blom Egypt Securities research department accepts no liability or legal responsibility for losses & damages incurred arising from the use of this publication or its contents.

Blom Egypt Securities
Samir M. Azmi, CFTe, CETA
Senior Technical Analyst
samir.azmi@blomsecurities.com



Most active Stocks

Daily Technical Analysis Report

22 Sep, 2020

Stock Name (Reuters' Code)	Close	Trend	T1	T2	Support	Resistance	SL	Triggers	
								Lower	Upper
Building Materials & Construction									
Arabian cement (ARCC.CA)	3.50	Dn.-Corr.	—	—	3.40	3.60	3.40	—	—
El Ezz Steel Rebar's (ESRS.CA)	7.14	Up-Corr.	—	—	7.00	7.75	6.00	—	—
Egyptian iron & steel; Co. (IRON.CA)	3.20	Up-Corr.	—	—	3.10	3.50	2.45	—	—
GB auto (AUTO.CA)	2.52	Dn.-Corr.	—	—	2.40	2.60	2.40	—	—
Orascom construction (ORAS.CA)	71.05	Dn.-Corr.	—	—	69.50	73.00	65.00	—	—
South Valley Cement (SVCE.CA)	1.87	Dn.-Corr.	—	—	1.70	1.97	1.65	—	—
Elsweddy Cables (SWDY.CA)	6.87	Up-Corr.	—	—	6.90	7.30	6.65	—	—
Upper Egypt general contracting (UEGC.CA)	0.837	Dn.-Corr.	—	—	0.809	0.855	0.66	—	—
Chemicals									
Abu-Qir fertilizers (ABUK.CA)	18.50	Flat	—	—	—	—	15.30	17.50	19.20
Egyptian Financial & Indust. (EFIC.CA)	10.15	Dn.-Corr.	—	—	9.80	10.60	9.80	—	—
Egyptian chemical industries-Kima (EGCH.CA)	4.25	Dn.-Corr.	—	—	4.10	4.40	3.75	—	—
Communications									
Orascom investment holding (OIH.CA)	0.53	Dn.-Corr.	—	—	0.52	0.55	0.46	—	—
Telecom Egypt (ETEL.CA)	11.44	Bearish	—	—	11.00	11.70	—	—	—
Financial Services									
Abu Dhabi International Bank (ADIB.CA)	10.71	Dn.-Corr.	—	—	10.40	11.50	10.00	—	—
Arabian for investments & development (AIH.CA)	0.49	Dn.-Corr.	—	—	0.475	0.50	0.43	—	—
Amer holding group (AMER.CA)	0.686	Dn.-Corr.	—	—	0.68	0.75	0.62	—	—
Commercial International Bank (COMI.CA)	67.00	Dn.-Corr.	—	—	67.50	69.50	58.45	—	—
Export development bank of Egypt (EXPA.CA)	10.95	Dn.-Corr.	—	—	10.70	11.60	10.70	—	—
Holding Companies									
CI capital holding for financial investments (CICH.CA)	3.43	Up-Corr.	—	—	3.40	3.55	3.40	—	—
Citadel capital (CCAP.CA)	1.457	Bearish	—	—	1.46	1.60	—	—	—
Hermes Holding (HRHO.CA)	12.90	Bearish	—	—	12.65	13.50	—	—	—
Kuwaiti Holding (EKHO.CA)	1.063	Dn.-Corr.	—	—	1.04	1.09	0.97	—	—
Pioneers holding (PIOH.CA)	3.90	Up-Corr.	—	—	3.85	4.15	3.70	—	—
Housing & Real Estate									
Egyptian For Tourism Resorts (EGTS.CA)	1.343	Dn.-Corr.	—	—	1.30	1.43	1.30	—	—
Elshams housing (ELSH.CA)	4.02	Dn.-Corr.	—	—	3.85	4.10	3.85	—	—
Emaar holding (EMFD.CA)	2.32	Up-Corr.	—	—	2.30	2.50	2.13	—	—
Heliopolis housing & development (HELL.CA)	5.69	Dn.-Corr.	—	—	5.60	6.15	5.60	—	—
Medinet Nasr for housing & Deve. (MNHD.CA)	3.06	Dn.-Corr.	—	—	3.00	3.20	2.75	—	—
6th. October Deve. Inv. (OCDI.CA)	11.89	Dn.-Corr.	—	—	11.90	12.30	10.25	—	—
Palm hills development Co. (PHDC.CA)	1.367	Dn.-Corr.	—	—	1.25	1.43	1.25	—	—
Talaat Mustafa group holding (TMGH.CA)	6.28	Dn.-Corr.	—	—	5.95	6.30	5.50	—	—
Mining & Gas									
Alexandria Mineral Oils Co. (AMOC.CA)	2.52	Dn.-Corr.	—	—	2.45	2.60	2.45	—	—
Sidi Kerir Petrochemicals (SKPC.CA)	8.00	Dn.-Corr.	—	—	7.55	8.10	7.20	—	—
Textiles & Clothes									
Arab Co. for asset management & Deve. (ACAMD.CA)	4.86	Dn.-Corr.	—	—	4.75	5.00	4.50	—	—
Arab cotton ginning (ACGC.CA)	3.39	Dn.-Corr.	—	—	3.17	3.45	3.17	—	—
Oriental Weavers (ORWE.CA)	5.34	Dn.-Corr.	—	—	5.15	5.55	4.75	—	—
Other Sectors									
Egyptian Media Production City (MPC.CA)	6.50	Bullish	7.00	8.00	6.10	7.00	5.80	—	—
Egyptian Transport - Egytrans (ETRS.CA)	8.81	Bullish	8.75√	9.35√	8.10	9.35	7.10	—	—
Orascom holding development (ORHD.CA)	4.05	Up-Corr.	—	—	4.07	4.30	4.07	—	—
United Arab Shipping (UASG.CA)	1.135	Bullish	1.08√	1.23	1.08	1.23	0.92	—	—

Disclaimer

- This publication has been prepared by Blom Egypt Securities for information purposes only.
- It is not intended as an offer to buy or sell or a solicitation of an offer to buy or sell the securities mentioned.
- The information & opinions in this publication were prepared by Blom Egypt Securities research department accepts no liability or legal responsibility for losses & damages incurred arising from the use of this publication or its contents.

Blom Egypt Securities
Samir M. Azmi, CFTe, CETA
Senior Technical Analyst
samir.azmi@blomsecurities.com



Guidelines for using BLOM daily Technical Analysis Report

<u>Close:</u>	Is recorded as the last trade in the session.
<u>Trend:</u>	
Bullish :	The strategy is to buy the dips.
Bearish :	The strategy is to sell the rallies.
Flat :	The strategy is to trade the range between the triggers.
Up-Corr. :	A move against the major trend when it is down.
Dn.-Corr. :	A move against the major trend when it is up.
<u>Targets :</u>	Take some profit by reducing a portion of the position whenever a price target is been hit.
<u>Support :</u>	A level below market price (previous lows) where buyers showed strength, in a bull market buy near the support and don't sell on the resistance. A break below the Support is considered to be a bearish sign.
<u>Resistance :</u>	A level above market price (previous highs) where sellers showed strength, in a bear market sell near the resistance level and don't buy on the support. A break above the resistance is considered to be a bullish sign.
<u>Stop Loss :</u>	Must exit the current position whenever the closing price is (1% to 2%) below the stop loss and confirmed by volume.
<u>Triggers :</u>	The range between the lower trigger and the upper is used for trading, break of any of them, the move would continue in the same direction.
<u>Yellow rows:</u>	indication that the stock closed below/above support, stop-loss, or resistance but the break is not confirmed yet.

Disclaimer

- This publication has been prepared by Blom Egypt Securities for information purposes only.
- It is not intended as an offer to buy or sell or a solicitation of an offer to buy or sell the securities mentioned.
- The information & opinions in this publication were prepared by Blom Egypt Securities research department accepts no liability or legal responsibility for losses & damages incurred arising from the use of this publication or its contents.

Blom Egypt Securities
Samir M. Azmi, CFTe, CETA
Senior Technical Analyst
samir.azmi@blomsecurities.com