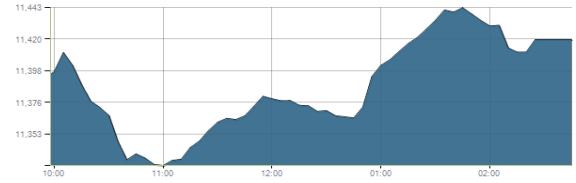




Indices intraday trends

EGX 30

مؤشر EGX 30  
اليوم - 01/12/2021

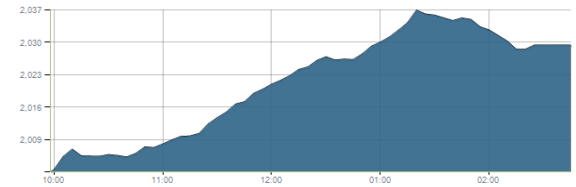


Key Levels

Support 1	11320-11200	Resistance 1	11675
Support 2	11100	Resistance 2	12250

EGX 50 EWI

مؤشر EGX 50 EWI  
اليوم - 01/12/2021

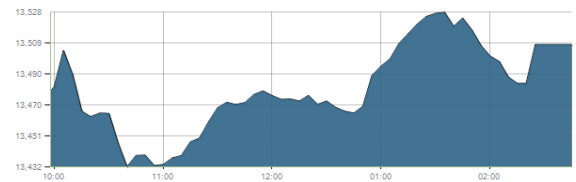


Key Levels

Close		2029.33	
Support 1	1970	Resistance 1	2060
Support 2	1890	Resistance 2	2150

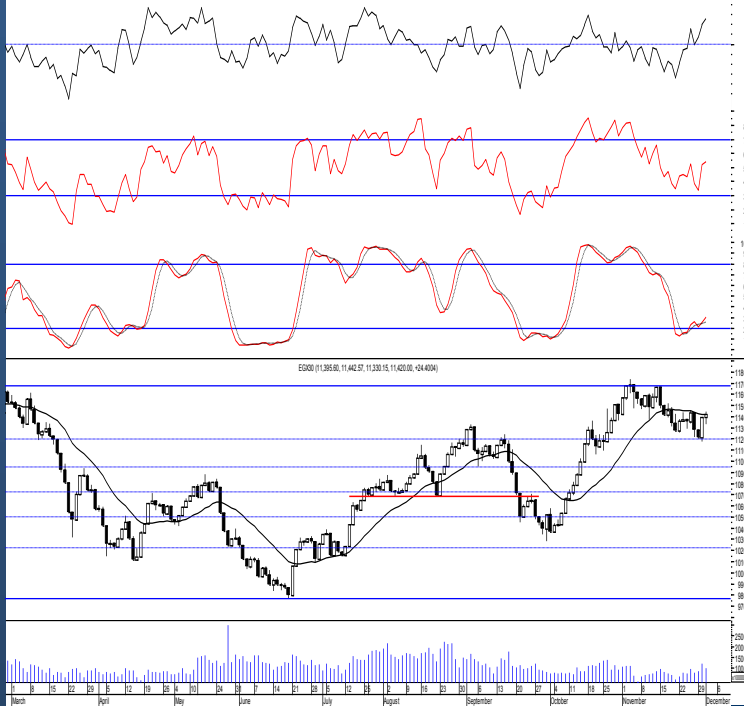
EGX 30 capped

مؤشر EGX 30 Capped  
اليوم - 01/12/2021



Key Levels

Close		13507.92	
Support 1	13470	Resistance 1	13550
Support 2	13330	Resistance 2	13800



Market Commentary:

The EGX30 closed slightly positive as balanced trading performance dominated keeping levels unchanged and so for our outlook. Trading volumes significantly increased indicating further climbing which will likely reach our prominent resistance level 11675.

Trading should be very selective and conservative keeping close stops placed and respected to reduce market risk. Notice that the mentioned support zone should be respected in any decline as any violation to it will indicate that bears are in control further decline will follow.

Close	11420.00	Trend	Dn.-Corr.
Pre. Close	11395.60	Target 1	---
Change	↑ 24.40 ( 0.21% )	Target 2	---
Day's range	11330.15 — 11442.57	Stop-loss	10680
52week's high	11675.69	52week's low	9769.18.18

Disclaimer

- This publication has been prepared by Blom Egypt Securities for information purposes only.
- It is not intended as an offer to buy or sell or a solicitation of an offer to buy or sell the securities mentioned.
- The information & opinions in this publication were prepared by Blom Egypt Securities research department accepts no liability or legal responsibility for losses & damages incurred arising from the use of this publication or its contents.

**Blom Egypt Securities**  
Samir M. Azmi, CFTe, CETA  
Senior Technical Analyst  
samir.azmi@blomsecurities.com

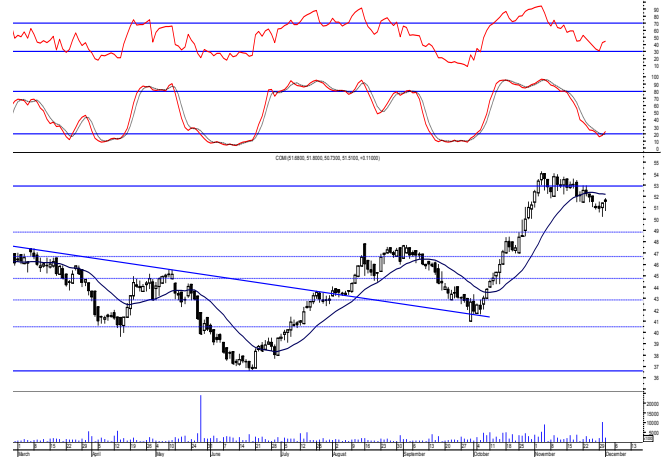


**Commercial international bank (COMI.CA):**

Prices traded slightly above our resistance level 51.60 where selling pressure took place from closing back below with a slight positive change keeping levels the same and so for our outlook.

As we said, confirming below 51.60 will lead to further decline to the coming support 49.80 so watch carefully and wait for a confirmed buy signal to react safely on.

Support levels: 49.80, 46.70  
Resistance levels: 51.60, 52.80

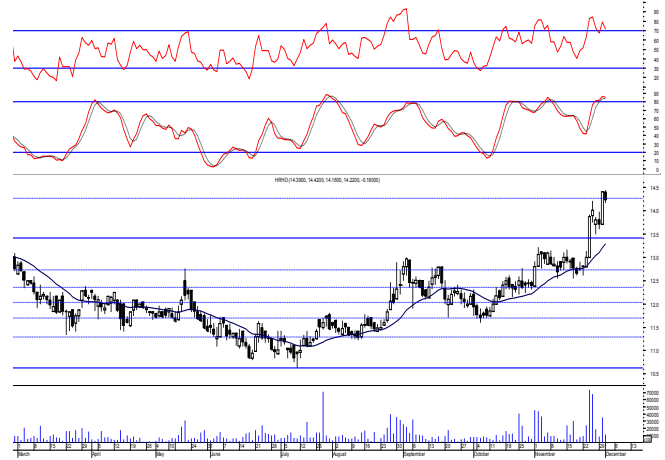


**Hermes Holding (HRHO.CA):**

Prices remained narrowly flat closing slightly negative leaving everything in place.

We recommend to partially take profit on current levels bearing in mind that clearing the important resistance level 14.45 will easily push prices higher to our 2nd target 15.65 and may extend to the resistance level 16.35.

Support levels: 13.40, (12-75-12.60)  
Resistance levels: 14.45, 16.35

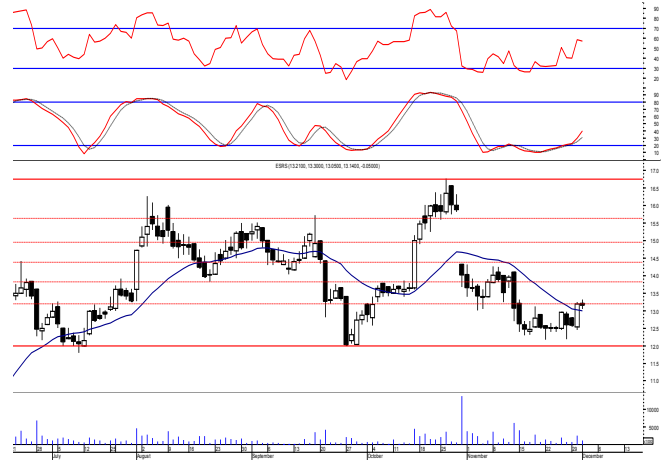


**El-Ezz steel rebar's' (ESRS.CA):**

Prices remained narrowly flat closing slightly negative after being unable to clear the resistance level 13.20 where as we said we may use to trade partially on so levels are the same and so for our outlook.

Notice that clearing the mentioned level will lead to further climbing to 13.80 while 12.00 should always be watched.

Support levels: 12.00, 10.55  
Resistance levels: 13.20, 13.80



**Disclaimer**

- This publication has been prepared by Blom Egypt Securities for information purposes only.
- It is not intended as an offer to buy or sell or a solicitation of an offer to buy or sell the securities mentioned.
- The information & opinions in this publication were prepared by Blom Egypt Securities research department accepts no liability or legal responsibility for losses & damages incurred arising from the use of this publication or its contents.

**Blom Egypt Securities**  
**Samir M. Azmi, CFTe, CETA**  
**Senior Technical Analyst**  
**samir.azmi@blomsecurities.com**



Most active Stocks

Daily Technical Analysis Report

2 Dec, 2021

Stock Name (Reuters' Code)	Close	Trend	T1	T2	Support	Resistance	SL	Triggers	
								Lower	Upper
<b>Building Materials &amp; Construction</b>									
Arabian cement (ARCC.CA)	3.90	Up-Corr.	—	—	3.77	4.10	3.20	—	—
El Ezz Steel Rebar's (ESRS.CA)	13.14	Bearish	—	—	12.00	13.20	—	—	—
GB auto (AUTO.CA)	3.98	Up-Corr.	—	—	3.90	4.07	3.57	—	—
Orascom construction (ORAS.CA)	69.52	Dn.-Corr.	—	—	68.50	71.70	68.50	—	—
South Valley Cement (SVCE.CA)	1.422	Up-Corr.	—	—	1.32	1.45	1.243	—	—
Elsweddy Cables (SWDY.CA)	8.54	UP-Corr.	—	—	8.30	8.75	7.90	—	—
Upper Egypt general contracting (UEGC.CA)	0.67	Up-Corr.	—	—	0.65	0.69	0.57	—	—
<b>Chemicals</b>									
Abu-Qir fertilizers (ABUK.CA)	18.81	Bearish	—	—	18.30	19.20	—	—	—
Egyptian Financial & Indust. (EFIC.CA)	12.10	Bearish	—	—	11.90	12.65	—	—	—
Egyptian chemical industries-Kima (EGCH.CA)	3.31	Up-Corr.	—	—	3.00	3.35	3.00	—	—
<b>Communications</b>									
Fawry for banking tech. & electronic payment (FWRY.CA)	12.70	Up-Corr.	—	—	12.40	13.60	11.80	—	—
Orascom investment holding (OIH.CA)	0.222	Up-Corr.	—	—	0.215	0.23	0.20	—	—
Telecom Egypt (ETEL.CA)	14.79	Dn.-Corr.	—	—	13.80	14.80	12.90	—	—
<b>Financial Services</b>									
Abu Dhabi International Bank (ADIB.CA)	14.87	Up-Corr.	—	—	14.10	15.10	12.60	—	—
Arabian for investments & development (AIH.CA)	0.359	Bearish	—	—	0.31	0.37	—	—	—
Amer holding group (AMER.CA)	0.984	Up-Corr.	—	—	0.95	1.05	0.85	—	—
Commercial International Bank (COMI.CA)	51.51	Dn.-Corr.	—	—	49.80	51.60	46.60	—	—
Export development bank of Egypt (EXPA.CA)	9.28	Up-Corr.	—	—	9.15	9.50	8.60	—	—
<b>Holding Companies</b>									
Citadel capital (CCAP.CA)	1.16	Up-Corr.	—	—	1.09	1.17	1.09	—	—
Hermes Holding (HRHO.CA)	14.22	Bullish	14.25√	15.20	13.40	14.45	11.25	—	—
Kuwaiti Holding (EKHO.CA)	1.375	Dn.-Corr.	—	—	1.35	1.395	1.22	—	—
MM group for industry & international trade (MTIE.CA)	6.08	Up-Corr.	—	—	5.90	6.20	5.60	—	—
Orascom financial holding (OFH.CA)	0.213	Bearish	—	—	0.195	0.23	—	—	—
<b>Housing &amp; Real Estate</b>									
Egyptian For Tourism Resorts (EGTS.CA)	1.431	Bearish	—	—	1.21	1.47	—	—	—
Elshams housing (ELSH.CA)	8.67	Up-Corr.	—	—	8.30	9.50	7.70	—	—
Emaar holding (EMFD.CA)	2.62	Dn.-Corr.	—	—	2.50	2.645	2.28	—	—
Heliopolis housing & development (HELL.CA)	5.10	Up-Corr.	—	—	5.00	5.25	4.45	—	—
Medinet Nasr for housing & Deve. (MNHD.CA)	2.40	Up-Corr.	—	—	2.16	2.40	2.16	—	—
6th. October Deve. Inv. (OCDI.CA)	19.67	Bullish	19.60√	21.50	18.80	19.60	16.90	—	—
Palm hills development Co. (PHDC.CA)	1.839	Up-Corr.	—	—	1.83	1.90	1.72	—	—
Talaat Mustafa group holding (TMGH.CA)	8.13	Bullish	8.20√	8.90	7.80	8.20	6.90	—	—
<b>Mining &amp; Gas</b>									
Alexandria Mineral Oils Co. (AMOC.CA)	3.49	Bearish	—	—	3.40	3.55	—	—	—
Sidi Kerir Petrochemicals (SKPC.CA)	6.85	Up-Corr.	—	—	6.80	7.20	6.30	—	—
<b>Textiles &amp; Clothes</b>									
Arab Co. for asset management & Deve. (ACAMD.CA)	0.502	Up-Corr.	—	—	0.425	0.50	0.35	—	—
Arab cotton ginning (ACGC.CA)	1.741	Up-Corr.	—	—	1.74	1.81	1.455	—	—
Oriental Weavers (ORWE.CA)	8.51	Dn.-Corr.	—	—	8.05	8.55	7.50	—	—
<b>Other Sectors</b>									
Egyptian Media Production City (MPRC.CA)	4.82	Up-Corr.	—	—	4.70	5.10	4.20	—	—
Egyptian Transport - Egytrans (ETRS.CA)	11.33	Up-Corr.	—	—	9.80	11.30	9.80	—	—
Orascom holding development (ORHD.CA)	5.70	Up-Corr.	—	—	5.55	5.80	5.15	—	—
United Arab Shipping (UASG.CA)	0.946	Bearish	—	—	0.80	0.945	—	—	—

Disclaimer

- This publication has been prepared by Blom Egypt Securities for information purposes only.
- It is not intended as an offer to buy or sell or a solicitation of an offer to buy or sell the securities mentioned.
- The information & opinions in this publication were prepared by Blom Egypt Securities research department accepts no liability or legal responsibility for losses & damages incurred arising from the use of this publication or its contents.

**Blom Egypt Securities**  
Samir M. Azmi, CFTe, CETA  
Senior Technical Analyst  
samir.azmi@blomsecurities.com



**Guidelines for using BLOM daily Technical Analysis Report**

<b><u>Close:</u></b>	Is recorded as the last trade in the session.
<b><u>Trend:</u></b>	
<b>Bullish :</b>	The strategy is to buy the dips.
<b>Bearish :</b>	The strategy is to sell the rallies.
<b>Flat :</b>	The strategy is to trade the range between the triggers.
<b>Up-Corr. :</b>	A move against the major trend when it is down.
<b>Dn.-Corr. :</b>	A move against the major trend when it is up.
<b><u>Targets :</u></b>	Take some profit by reducing a portion of the position whenever a price target is been hit.
<b><u>Support :</u></b>	A level below market price (previous lows) where buyers showed strength, in a bull market buy near the support and don't sell on the resistance. A break below the Support is considered to be a bearish sign.
<b><u>Resistance :</u></b>	A level above market price (previous highs) where sellers showed strength, in a bear market sell near the resistance level and don't buy on the support. A break above the resistance is considered to be a bullish sign.
<b><u>Stop Loss :</u></b>	Must exit the current position whenever the closing price is (1% to 2%) below the stop loss and confirmed by volume.
<b><u>Triggers :</u></b>	The range between the lower trigger and the upper is used for trading, break of any of them, the move would continue in the same direction.
<b><u>Yellow rows:</u></b>	indication that the stock closed below/above support, stop-loss, or resistance but the break is not confirmed yet.

**Disclaimer**

- This publication has been prepared by Blom Egypt Securities for information purposes only.
- It is not intended as an offer to buy or sell or a solicitation of an offer to buy or sell the securities mentioned.
- The information & opinions in this publication were prepared by Blom Egypt Securities research department accepts no liability or legal responsibility for losses & damages incurred arising from the use of this publication or its contents.

**Blom Egypt Securities**  
**Samir M. Azmi, CFTe, CETA**  
**Senior Technical Analyst**  
**samir.azmi@blomsecurities.com**