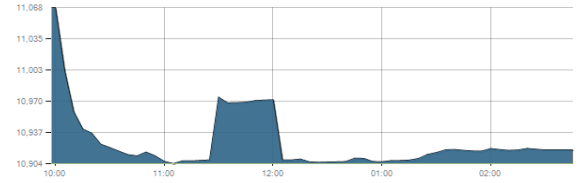




Indices intraday trends

EGX 30

مؤشر EGX 30
اليوم - 18/03/2021

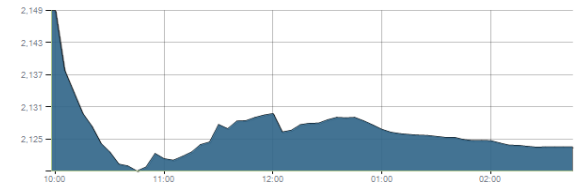


Key Levels

Support 1	10900	Resistance 1	11000-11100
Support 2	10700	Resistance 2	11230

EGX 50 EWI

مؤشر EGX 50 EWI
اليوم - 18/03/2021

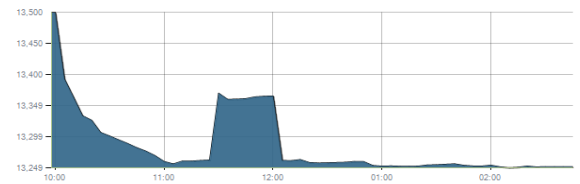


Key Levels

Close		2123.36	
Support 1	2050	Resistance 1	2150
Support 2	1990	Resistance 2	2230

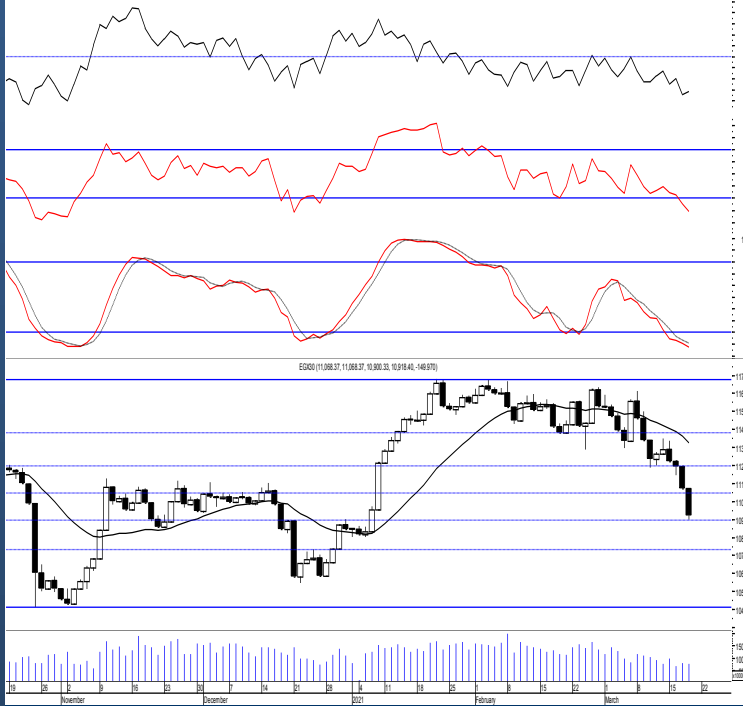
EGX 30 capped

مؤشر EGX 30 Capped
اليوم - 18/03/2021



Key Levels

Close		13250.38	
Support 1	13170	Resistance 1	13470
Support 2	12870	Resistance 2	13850



Market Commentary:

The EGX30 extended lower as selling pressure remained in control closing violating the support zone 11100-11000 turning it into resistance. The decline continued further reaching our 2nd support level 10900 where the market started to rebound slightly from but lack of positive signals & volumes to not support the upside potential. Thus, we still believe that the third mentioned level will be reached.

As we said, bears now have the near term technical advantage and lower lows will be expected.

We recommend to react separately on every stock while new trades to wait for a confirmed buy signal to react safely on.

Close	10918.40	Trend	Bearish
Pre. Close	11068.37	Target 1	---
Change	↓ 149.97 (1.35%)	Target 2	---
Day's range	11068.37 — 10900.33	Stop-loss	---
52week's high	11675.69	52week's low	8113.82

Disclaimer

- This publication has been prepared by Blom Egypt Securities for information purposes only.
- It is not intended as an offer to buy or sell or a solicitation of an offer to buy or sell the securities mentioned.
- The information & opinions in this publication were prepared by Blom Egypt Securities research department accepts no liability or legal responsibility for losses & damages incurred arising from the use of this publication or its contents.

Blom Egypt Securities
Samir M. Azmi, CFTe, CETA
Senior Technical Analyst
samir.azmi@blomsecurities.com

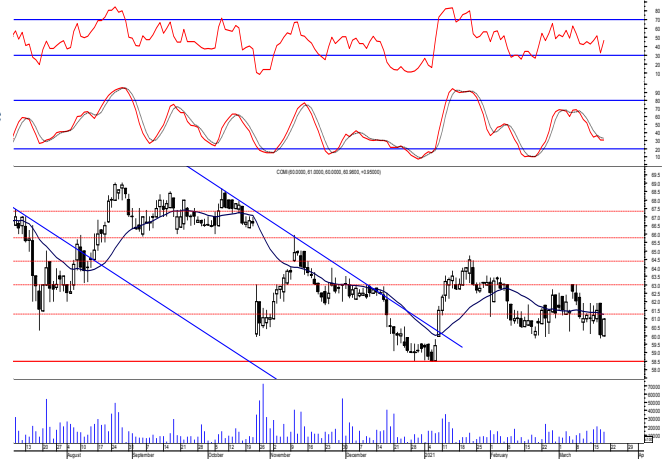


Commercial international bank (COMI.CA):

Prices remained trading flat closing slightly positive after being able to defend the support level 60.00 leaving levels the same and so for our outlook.

New trades should wait for more confirmation while existing ones are advised to keep protective stop placed below 60.00.

Support levels: 60.00, 58.50
Resistance levels: 63.00, 64.50

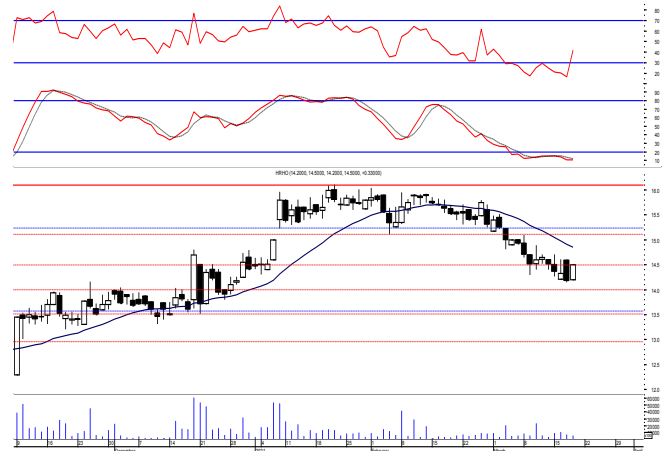


Hermes Holding (HRHO.CA):

Prices traded flat closing slightly positive as balanced trading dominated. As we said, by failing to defend the support level 14.60 bears are in control and therefore lower lows is expected.

Close stops should always be placed and respected to protect the downside.

Support levels: 13.50, 12.90
Resistance levels: 14.60, 15.25-15.55

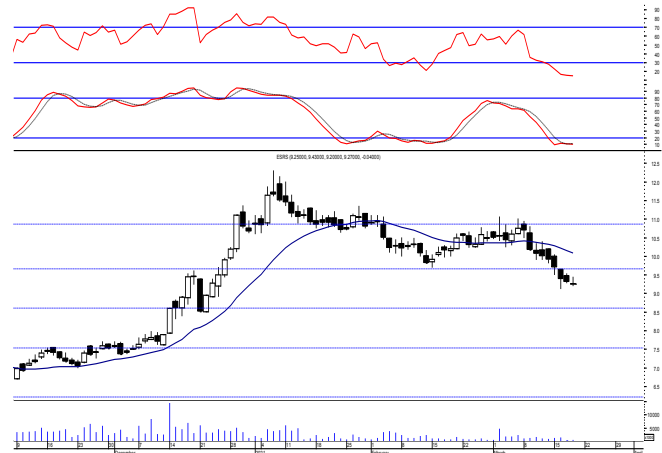


El-Ezz steel rebar's' (ESRS.CA):

Prices remained narrowly flat closing within the same range keeping everything in place.

Yet, new positions are advised to wait for a confirmed buy signal to react safely on

Support levels: 8.50, 7.50
Resistance levels: 9.80, 10.60



Disclaimer

- This publication has been prepared by Blom Egypt Securities for information purposes only.
- It is not intended as an offer to buy or sell or a solicitation of an offer to buy or sell the securities mentioned.
- The information & opinions in this publication were prepared by Blom Egypt Securities research department accepts no liability or legal responsibility for losses & damages incurred arising from the use of this publication or its contents.

Blom Egypt Securities
Samir M. Azmi, CFTe, CETA
Senior Technical Analyst
samir.azmi@blomsecurities.com



Most active Stocks

Daily Technical Analysis Report

19 Mar, 2021

Stock Name (Reuters' Code)	Close	Trend	T1	T2	Support	Resistance	SL	Triggers	
								Lower	Upper
Building Materials & Construction									
Arabian cement (ARCC.CA)	3.05	Dn.-Corr.	—	—	3.00	3.17	3.00	—	—
El Ezz Steel Rebar's (ESRS.CA)	9.27	Bearish	—	—	8.50	9.80	—	—	—
GB auto (AUTO.CA)	4.03	Bullish	4.35	4.75	3.95	4.35	3.65	—	—
Orascom construction (ORAS.CA)	91.61	Dn.-Corr.	—	—	88.00	93.00	81.00	—	—
South Valley Cement (SVCE.CA)	1.72	Bearish	—	—	1.73	1.85	—	—	—
Elsweddy Cables (SWDY.CA)	9.04	Bearish	—	—	8.50	9.15	—	—	—
Upper Egypt general contracting (UEGC.CA)	0.76	Bearish	—	—	0.725	0.815	—	—	—
Chemicals									
Abu-Qir fertilizers (ABUK.CA)	20.80	Dn.-Corr.	—	—	19.20	20.90	19.20	—	—
Egyptian Financial & Indust. (EFIC.CA)	11.30	Bearish	—	—	10.60	11.50	—	—	—
Egyptian chemical industries-Kima (EGCH.CA)	3.76	Up-Corr.	—	—	3.60	3.80	3.60	—	—
Communications									
Orascom investment holding (OIH.CA)	0.315	Bullish	0.302√	0.345	0.30	0.345	0.243	—	—
Telecom Egypt (ETEL.CA)	10.80	Bearish	—	—	10.80	11.40	—	—	—
Financial Services									
Abu Dhabi International Bank (ADIB.CA)	11.50	Dn.-Corr.	—	—	11.20	12.00	11.20	—	—
Arabian for investments & development (AIH.CA)	0.553	Up-Corr.	—	—	0.536	0.59	0.50	—	—
Amer holding group (AMER.CA)	1.11	Dn.-Corr.	—	—	1.07	1.14	0.88	—	—
Commercial International Bank (COMI.CA)	60.96	Up-Corr.	—	—	60.00	63.00	58.50	—	—
Export development bank of Egypt (EXPA.CA)	12.70	Bearish	—	—	12.50	13.30	—	—	—
Holding Companies									
Citadel capital (CCAP.CA)	1.335	Bearish	—	—	1.315	1.40	—	—	—
Hermes Holding (HRHO.CA)	14.50	Bearish	—	—	13.50	14.60	—	—	—
Kuwaiti Holding (EKHO.CA)	1.152	Up-Corr.	—	—	1.11	1.17	1.04	—	—
MM group for industry & international trade (MTIE.CA)	10.16	Dn.-Corr.	—	—	10.10	10.90	10.10	—	—
Orascom financial holding (OFH.CA)	0.30	Bearish	—	—	0.275	0.31	—	—	—
Pioneers holding (PIOH.CA)	4.56	Bearish	—	—	4.45	4.90	—	—	—
Housing & Real Estate									
Egyptian For Tourism Resorts (EGTS.CA)	1.499	Bearish	—	—	1.45	1.52	1.35	—	—
Elshams housing (ELSH.CA)	4.48	Bearish	—	—	4.15	4.60	—	—	—
Emaar holding (EMFD.CA)	2.39	Bearish	—	—	2.25	2.45	—	—	—
Heliopolis housing & development (HELL.CA)	5.01	Bearish	—	—	4.60	5.00	—	—	—
Medinet Nasr for housing & Deve. (MNHD.CA)	3.76	Up-Corr.	—	—	3.75	3.97	3.50	—	—
6th. October Deve. Inv. (OCDI.CA)	16.87	Bullish	17.00√	18.70	16.00	17.00	13.90	—	—
Palm hills development Co. (PHDC.CA)	1.68	Dn.-Corr.	—	—	1.66	1.71	1.53	—	—
Talaat Mustafa group holding (TMGH.CA)	6.36	Bearish	—	—	6.40	6.65	—	—	—
Mining & Gas									
Alexandria Mineral Oils Co. (AMOC.CA)	2.93	Up-Corr.	—	—	2.75	3.00	2.75	—	—
Sidi Kerir Petrochemicals (SKPC.CA)	10.70	Dn.-Corr.	—	—	10.50	11.10	9.80	—	—
Textiles & Clothes									
Arab Co. for asset management & Deve. (ACAMD.CA)	0.861	Up-Corr.	—	—	0.82	0.93	0.77	—	—
Arab cotton ginning (ACGC.CA)	2.76	Bearish	—	—	2.65	2.85	—	—	—
Oriental Weavers (ORWE.CA)	7.09	Up-Corr.	—	—	6.75	7.10	6.50	—	—
Other Sectors									
Egyptian Media Production City (MPRC.CA)	5.91	Bearish	—	—	5.65	6.00	—	—	—
Egyptian Transport - Egytrans (ETRS.CA)	11.15	Bearish	—	—	10.60	11.00	—	—	—
Orascom holding development (ORHD.CA)	5.75	Bullish	6.10	6.45	5.65	6.45	4.70	—	—
United Arab Shipping (UASG.CA)	0.925	Bearish	—	—	0.905	0.98	—	—	—

Disclaimer

- This publication has been prepared by Blom Egypt Securities for information purposes only.
- It is not intended as an offer to buy or sell or a solicitation of an offer to buy or sell the securities mentioned.
- The information & opinions in this publication were prepared by Blom Egypt Securities research department accepts no liability or legal responsibility for losses & damages incurred arising from the use of this publication or its contents.

Blom Egypt Securities
Samir M. Azmi, CFTe, CETA
Senior Technical Analyst
samir.azmi@blomsecurities.com



Guidelines for using BLOM daily Technical Analysis Report

<u>Close:</u>	Is recorded as the last trade in the session.
<u>Trend:</u>	
Bullish :	The strategy is to buy the dips.
Bearish :	The strategy is to sell the rallies.
Flat :	The strategy is to trade the range between the triggers.
Up-Corr. :	A move against the major trend when it is down.
Dn.-Corr. :	A move against the major trend when it is up.
<u>Targets :</u>	Take some profit by reducing a portion of the position whenever a price target is been hit.
<u>Support :</u>	A level below market price (previous lows) where buyers showed strength, in a bull market buy near the support and don't sell on the resistance. A break below the Support is considered to be a bearish sign.
<u>Resistance :</u>	A level above market price (previous highs) where sellers showed strength, in a bear market sell near the resistance level and don't buy on the support. A break above the resistance is considered to be a bullish sign.
<u>Stop Loss :</u>	Must exit the current position whenever the closing price is (1% to 2%) below the stop loss and confirmed by volume.
<u>Triggers :</u>	The range between the lower trigger and the upper is used for trading, break of any of them, the move would continue in the same direction.
<u>Yellow rows:</u>	indication that the stock closed below/above support, stop-loss, or resistance but the break is not confirmed yet.

Disclaimer

- This publication has been prepared by Blom Egypt Securities for information purposes only.
- It is not intended as an offer to buy or sell or a solicitation of an offer to buy or sell the securities mentioned.
- The information & opinions in this publication were prepared by Blom Egypt Securities research department accepts no liability or legal responsibility for losses & damages incurred arising from the use of this publication or its contents.

Blom Egypt Securities
Samir M. Azmi, CFTe, CETA
Senior Technical Analyst
samir.azmi@blomsecurities.com