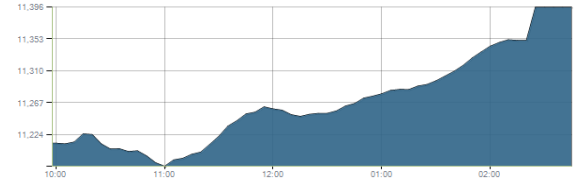




Indices intraday trends

EGX 30

مؤشر EGX 30  
اليوم - 30/11/2021

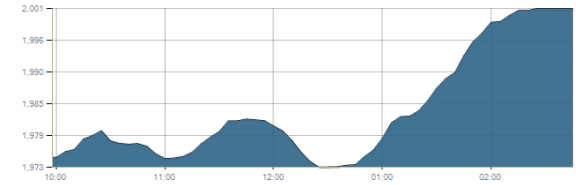


Key Levels

Support 1	11320-11200	Resistance 1	11675
Support 2	11100	Resistance 2	12250

EGX 50 EWI

مؤشر EGX 50 EWI  
اليوم - 30/11/2021

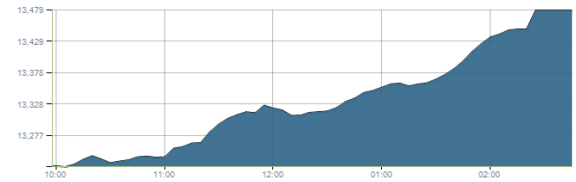


Key Levels

Close		2001.47	
Support 1	1970	Resistance 1	2060
Support 2	1890	Resistance 2	2150

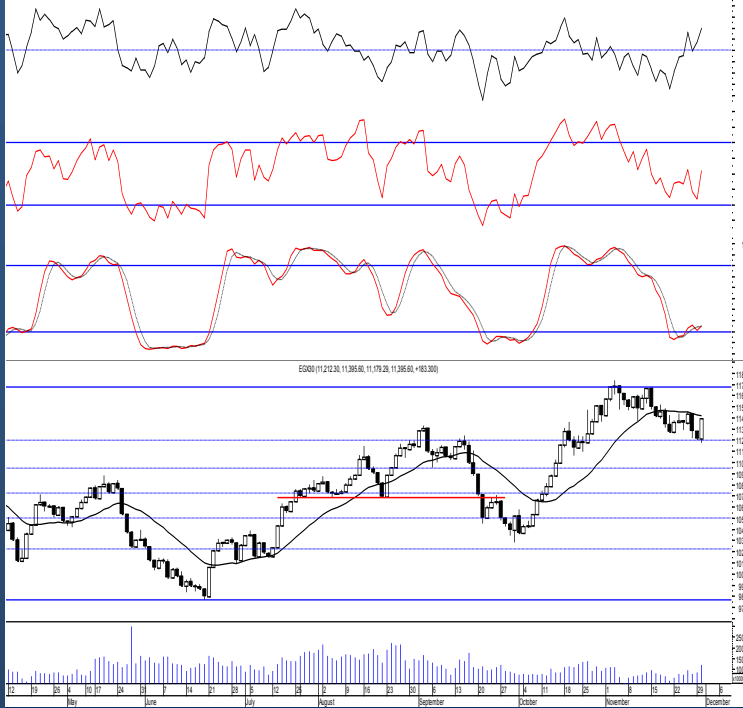
EGX 30 capped

مؤشر EGX 30 Capped  
اليوم - 30/11/2021



Key Levels

Close		13479.06	
Support 1	13050	Resistance 1	13330
Support 2	12840	Resistance 2	13470



Market Commentary:

The EGX30 traded slightly below our important support zone [11320-11200] where again rebounding started from gaining all losses closing almost on the high keeping levels unchanged and so for our outlook. Trading volumes significantly increased indicating further climbing which will likely reach our prominent resistance level 11675.

Trading should be very selective and conservative keeping close stops placed and respected to reduce market risk.

Notice that the mentioned support zone should be respected in any decline as any violation to it will indicate that bears are in control further decline will follow.

Close	11395.60	Trend	Dn.-Corr.
Pre. Close	11212.30	Target 1	—
Change	↑ 183.30 ( 1.63% )	Target 2	—
Day's range	11179.29 — 11395.60	Stop-loss	10680
52week's high	11675.69	52week's low	9769.18.18

Disclaimer

- This publication has been prepared by Blom Egypt Securities for information purposes only.
- It is not intended as an offer to buy or sell or a solicitation of an offer to buy or sell the securities mentioned.
- The information & opinions in this publication were prepared by Blom Egypt Securities research department accepts no liability or legal responsibility for losses & damages incurred arising from the use of this publication or its contents.

**Blom Egypt Securities**  
Samir M. Azmi, CFTe, CETA  
Senior Technical Analyst  
samir.azmi@blomsecurities.com



**Commercial international bank (COMI.CA):**

Prices traded lower ahead of trading before rebounding process takes place erasing all losses and closing on the session's high keeping levels the same and so for our outlook. As we said, confirming below 51.60 will lead to further decline to the coming support 49.80 so watch carefully and wait for a confirmed buy signal to react safely on.

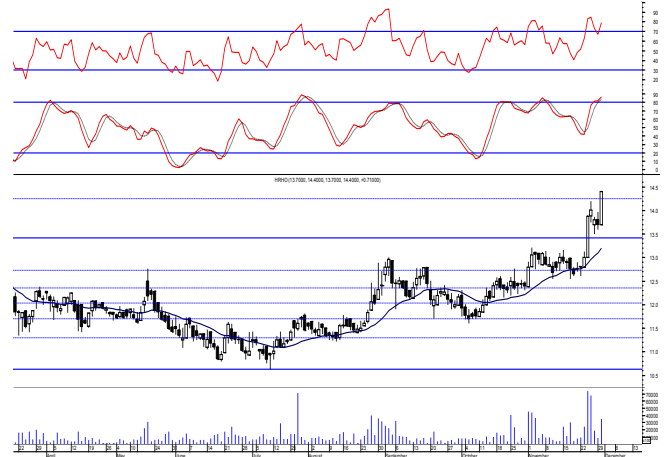
Support levels: 49.80, 46.70  
Resistance levels: 51.60, 52.80



**Hermes Holding (HRHO.CA):**

Prices witnessed a sharp upward move hitting our first target 14.25 closing on the session's high approaching our strong resistance level 14.45 where as we said should be respected. We recommend to partially take profit on current levels bearing in mind that clearing the mentioned resistance level will easily push prices higher to our 2nd target 15.65 and may extend to the resistance level 16.35.

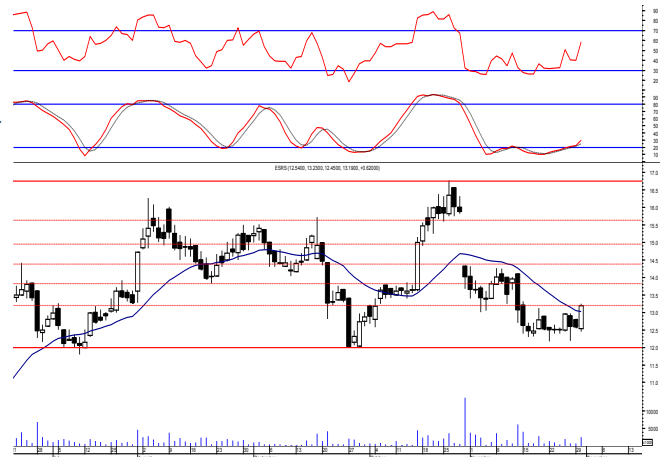
Support levels: 13.40, (12-75-12.60)  
Resistance levels: 14.45, 16.35



**El-Ezz steel rebar's' (ESRS.CA):**

Prices witnessed an upward move reaching the resistance level 13.20 as we expected where we may use to trade partially on. Notice that clearing the mentioned level will lead to further climbing to 13.80 while 12.00 should always be watched.

Support levels: 12.00, 10.55  
Resistance levels: 13.20, 13.80



**Disclaimer**

- This publication has been prepared by Blom Egypt Securities for information purposes only.
- It is not intended as an offer to buy or sell or a solicitation of an offer to buy or sell the securities mentioned.
- The information & opinions in this publication were prepared by Blom Egypt Securities research department accepts no liability or legal responsibility for losses & damages incurred arising from the use of this publication or its contents.

**Blom Egypt Securities**  
**Samir M. Azmi, CFTe, CETA**  
**Senior Technical Analyst**  
**samir.azmi@blomsecurities.com**



Most active Stocks

Daily Technical Analysis Report

1 Dec, 2021

Stock Name (Reuters' Code)	Close	Trend	T1	T2	Support	Resistance	SL	Triggers	
								Lower	Upper
<b>Building Materials &amp; Construction</b>									
Arabian cement (ARCC.CA)	3.91	Up-Corr.	—	—	3.77	4.10	3.20	—	—
El Ezz Steel Rebar's (ESRS.CA)	13.19	Bearish	—	—	12.00	13.20	—	—	—
GB auto (AUTO.CA)	3.92	Up-Corr.	—	—	3.90	4.07	3.57	—	—
Orascom construction (ORAS.CA)	69.01	Dn.-Corr.	—	—	68.50	71.70	68.50	—	—
South Valley Cement (SVCE.CA)	1.412	Up-Corr.	—	—	1.32	1.45	1.243	—	—
Elsweddy Cables (SWDY.CA)	8.40	UP-Corr.	—	—	8.30	8.75	7.90	—	—
Upper Egypt general contracting (UEGC.CA)	0.644	Up-Corr.	—	—	0.61	0.655	0.57	—	—
<b>Chemicals</b>									
Abu-Qir fertilizers (ABUK.CA)	18.70	Bearish	—	—	18.30	19.20	—	—	—
Egyptian Financial & Indust. (EFIC.CA)	12.14	Bearish	—	—	11.90	12.65	—	—	—
Egyptian chemical industries-Kima (EGCH.CA)	3.23	Up-Corr.	—	—	3.00	3.35	3.00	—	—
<b>Communications</b>									
Fawry for banking tech. & electronic payment (FWRY.CA)	12.99	Up-Corr.	—	—	12.40	13.60	11.80	—	—
Orascom investment holding (OIH.CA)	0.221	Up-Corr.	—	—	0.215	0.23	0.20	—	—
Telecom Egypt (ETEL.CA)	14.36	Dn.-Corr.	—	—	13.80	14.80	12.90	—	—
<b>Financial Services</b>									
Abu Dhabi International Bank (ADIB.CA)	14.93	Up-Corr.	—	—	14.10	15.10	12.60	—	—
Arabian for investments & development (AIH.CA)	0.362	Bearish	—	—	0.31	0.37	—	—	—
Amer holding group (AMER.CA)	0.95	Bearish	—	—	0.905	0.96	—	—	—
Commercial International Bank (COMI.CA)	51.40	Dn.-Corr.	—	—	49.80	51.60	46.60	—	—
Export development bank of Egypt (EXPA.CA)	9.10	Bearish	—	—	8.10	9.20	—	—	—
<b>Holding Companies</b>									
Citadel capital (CCAP.CA)	1.16	Up-Corr.	—	—	1.09	1.17	1.09	—	—
Hermes Holding (HRHO.CA)	14.40	Bullish	14.25√	15.20	13.40	14.45	11.25	—	—
Kuwaiti Holding (EKHO.CA)	1.37	Dn.-Corr.	—	—	1.35	1.395	1.22	—	—
MM group for industry & international trade (MTIE.CA)	6.09	Up-Corr.	—	—	5.90	6.20	5.60	—	—
Orascom financial holding (OFH.CA)	0.211	Bearish	—	—	0.195	0.23	—	—	—
<b>Housing &amp; Real Estate</b>									
Egyptian For Tourism Resorts (EGTS.CA)	1.404	Bearish	—	—	1.21	1.47	—	—	—
Elshams housing (ELSH.CA)	8.00	Up-Corr.	—	—	7.70	8.30	5.40	—	—
Emaar holding (EMFD.CA)	2.64	Dn.-Corr.	—	—	2.50	2.645	2.28	—	—
Heliopolis housing & development (HELL.CA)	4.97	Up-Corr.	—	—	4.80	5.00	3.97	—	—
Medinet Nasr for housing & Deve. (MNHD.CA)	2.38	Up-Corr.	—	—	2.16	2.40	2.16	—	—
6th. October Deve. Inv. (OCDI.CA)	19.61	Bullish	19.60√	21.50	18.80	19.60	16.90	—	—
Palm hills development Co. (PHDC.CA)	1.79	Up-Corr.	—	—	1.72	1.83	1.72	—	—
Talaat Mustafa group holding (TMGH.CA)	8.19	Bullish	8.20√	8.90	7.80	8.20	6.90	—	—
<b>Mining &amp; Gas</b>									
Alexandria Mineral Oils Co. (AMOC.CA)	3.48	Bearish	—	—	3.40	3.55	—	—	—
Sidi Kerir Petrochemicals (SKPC.CA)	6.78	Bearish	—	—	6.30	6.80	—	—	—
<b>Textiles &amp; Clothes</b>									
Arab Co. for asset management & Deve. (ACAMD.CA)	0.508	Up-Corr.	—	—	0.425	0.50	0.35	—	—
Arab cotton ginning (ACGC.CA)	1.75	Up-Corr.	—	—	1.74	1.81	1.455	—	—
Oriental Weavers (ORWE.CA)	8.47	Dn.-Corr.	—	—	8.05	8.55	7.50	—	—
<b>Other Sectors</b>									
Egyptian Media Production City (MPRC.CA)	4.66	Bearish	—	—	4.40	4.75	—	—	—
Egyptian Transport - Egytrans (ETRS.CA)	10.84	Up-Corr.	—	—	9.80	11.30	9.80	—	—
Orascom holding development (ORHD.CA)	5.77	Up-Corr.	—	—	5.55	5.80	5.15	—	—
United Arab Shipping (UASG.CA)	0.941	Bearish	—	—	0.80	0.945	—	—	—

Disclaimer

- This publication has been prepared by Blom Egypt Securities for information purposes only.
- It is not intended as an offer to buy or sell or a solicitation of an offer to buy or sell the securities mentioned.
- The information & opinions in this publication were prepared by Blom Egypt Securities research department accepts no liability or legal responsibility for losses & damages incurred arising from the use of this publication or its contents.

**Blom Egypt Securities**  
Samir M. Azmi, CFTe, CETA  
Senior Technical Analyst  
samir.azmi@blomsecurities.com



**Guidelines for using BLOM daily Technical Analysis Report**

<b><u>Close:</u></b>	Is recorded as the last trade in the session.
<b><u>Trend:</u></b>	
<b>Bullish :</b>	The strategy is to buy the dips.
<b>Bearish :</b>	The strategy is to sell the rallies.
<b>Flat :</b>	The strategy is to trade the range between the triggers.
<b>Up-Corr. :</b>	A move against the major trend when it is down.
<b>Dn.-Corr. :</b>	A move against the major trend when it is up.
<b><u>Targets :</u></b>	Take some profit by reducing a portion of the position whenever a price target is been hit.
<b><u>Support :</u></b>	A level below market price (previous lows) where buyers showed strength, in a bull market buy near the support and don't sell on the resistance. A break below the Support is considered to be a bearish sign.
<b><u>Resistance :</u></b>	A level above market price (previous highs) where sellers showed strength, in a bear market sell near the resistance level and don't buy on the support. A break above the resistance is considered to be a bullish sign.
<b><u>Stop Loss :</u></b>	Must exit the current position whenever the closing price is (1% to 2%) below the stop loss and confirmed by volume.
<b><u>Triggers :</u></b>	The range between the lower trigger and the upper is used for trading, break of any of them, the move would continue in the same direction.
<b><u>Yellow rows:</u></b>	indication that the stock closed below/above support, stop-loss, or resistance but the break is not confirmed yet.

**Disclaimer**

- This publication has been prepared by Blom Egypt Securities for information purposes only.
- It is not intended as an offer to buy or sell or a solicitation of an offer to buy or sell the securities mentioned.
- The information & opinions in this publication were prepared by Blom Egypt Securities research department accepts no liability or legal responsibility for losses & damages incurred arising from the use of this publication or its contents.

**Blom Egypt Securities**  
**Samir M. Azmi, CFTe, CETA**  
**Senior Technical Analyst**  
**samir.azmi@blomsecurities.com**