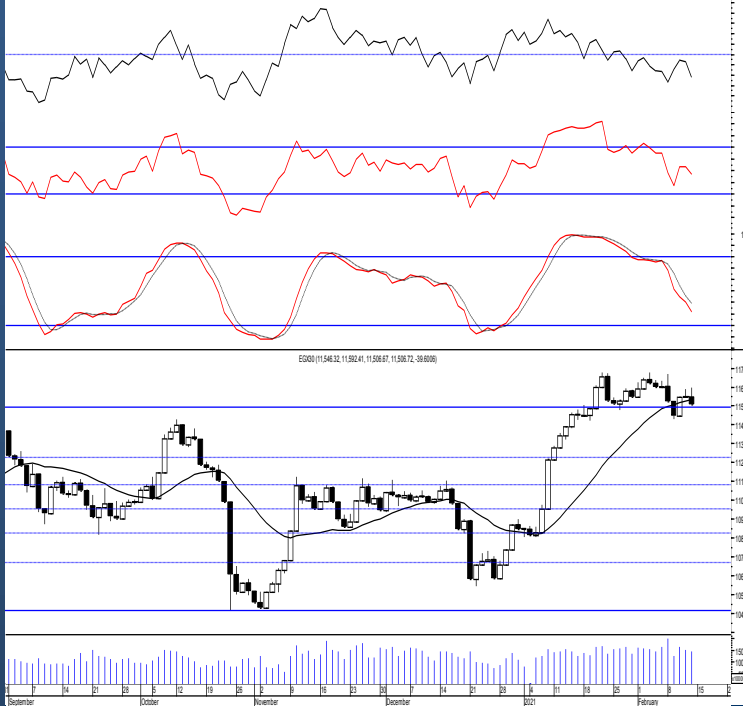




Egypt | EGX 30

Daily Technical Analysis Report

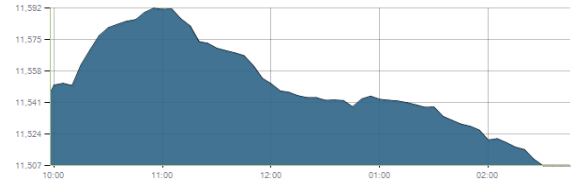
15 Feb, 2021



Indices intraday trends

EGX 30

مؤشر EGX 30
اليوم - 14/02/2021

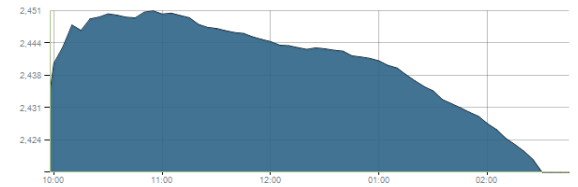


Key Levels

| | | | |
|-----------|-------------|--------------|-------|
| Support 1 | 11500-11450 | Resistance 1 | 11850 |
| Support 2 | 11230 | Resistance 2 | 12200 |

EGX 50 EWI

مؤشر EGX 50 EWI
اليوم - 14/02/2021

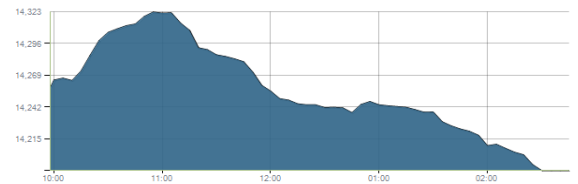


Key Levels

| | | | |
|-----------|------|--------------|------|
| Close | | 2417.51 | |
| Support 1 | 2360 | Resistance 1 | 2430 |
| Support 2 | 2300 | Resistance 2 | 2600 |

EGX 30 capped

مؤشر EGX 30 Capped
اليوم - 14/02/2021



Key Levels

| | | | |
|-----------|-------|--------------|-------|
| Close | | 14188.17 | |
| Support 1 | 14200 | Resistance 1 | 14750 |
| Support 2 | 13850 | Resistance 2 | 15400 |

Market Commentary:

The EGX30 closed in red as selling pressure dominated in most of the stocks piling the index approaching our important support zone where it's highly recommended to watch. Trading volumes decreased indicating lower selling appetite suggesting that the market is still able to defend the mentioned support.

As we said, by managing to defend the mentioned support zone our target levels are 11850 & 12200.

Failing to defend this zone will keep the market under further stress and lower levels will be expected.

| | | | |
|---------------|---------------------|--------------|---------|
| Close | 11506.72 | Trend | Bullish |
| Pre. Close | 11546.32 | Target 1 | 11450 ✓ |
| Change | ↓ 39.60 (0.34%) | Target 2 | 11850 |
| Day's range | 11592.41 — 11506.72 | Stop-loss | 11230 |
| 52week's high | 14831.20 | 52week's low | 8113.82 |

Disclaimer

- This publication has been prepared by Blom Egypt Securities for information purposes only.
- It is not intended as an offer to buy or sell or a solicitation of an offer to buy or sell the securities mentioned.
- The information & opinions in this publication were prepared by Blom Egypt Securities research department accepts no liability or legal responsibility for losses & damages incurred arising from the use of this publication or its contents.

Blom Egypt Securities
Samir M. Azmi, CFTe, CETA
Senior Technical Analyst
samir.azmi@blomsecurities.com



Commercial international bank (COMI.CA):

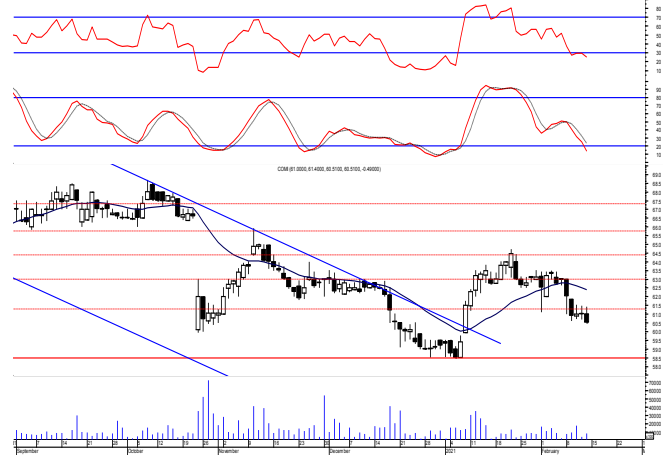
Prices remained under stress most of the session closing near the low approaching the important support level 61.00 where we highly recommend to watch.

As we said, ignoring the recent strength evident on technical indicators is considered a negative sign indicating that bears are gaining control so it's highly recommended to watch current levels.

Protective stop should be placed below 60.00.

Support levels: 60.00, 58.50

Resistance levels: 63.00, 64.50



Hermes Holding (HRHO.CA):

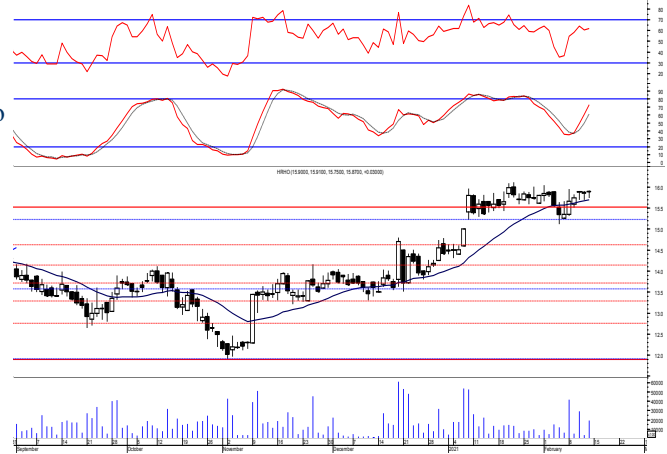
Prices closed slightly negative after quiet balanced trading keeping everything in place. Notice that it is very important to defend the mentioned zone to prove that buyers are still in control.

New target zone within 16.60-17.10 where we believe it represents strong retracement level where may use trade on.

Close stops should always be placed and respected to protect the downside.

Support levels: 15.55-15.25, 14.60

Resistance levels: 16.60-17.10, 17.80



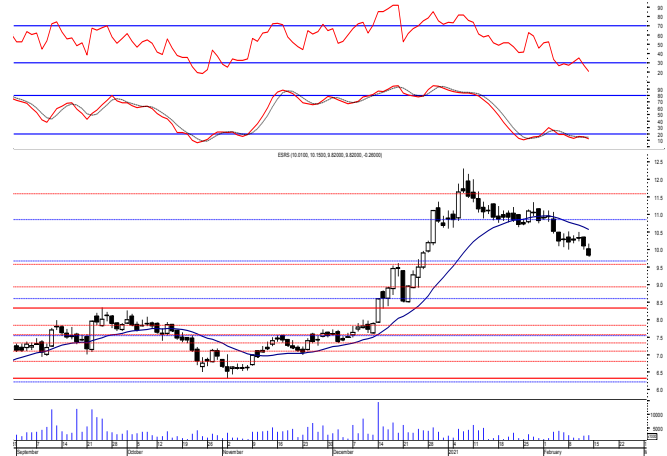
El-Ezz steel rebar's' (ESRS.CA):

Prices witnessed another downward move as selling pressure dominated closing again near the session's low reaching our support level

As we said, we may close our sold positions after the violation of 10.60 bearing in mind that any violation to the mentioned support will keep prices under further stress and lower levels will be expected.

Support levels: 9.80, 8.90

Resistance levels: 10.60, 10.90



Disclaimer

- This publication has been prepared by Blom Egypt Securities for information purposes only.
- It is not intended as an offer to buy or sell or a solicitation of an offer to buy or sell the securities mentioned.
- The information & opinions in this publication were prepared by Blom Egypt Securities research department accepts no liability or legal responsibility for losses & damages incurred arising from the use of this publication or its contents.

Blom Egypt Securities
Samir M. Azmi, CFTe, CETA
Senior Technical Analyst
samir.azmi@blomsecurities.com



بلوم مصر لتداول الأوراق المالية

BLOM EGYPT SECURITIES



Most active Stocks

Daily Technical Analysis Report

15 Feb, 2021

| Stock Name (Reuters' Code) | Close | Trend | T1 | T2 | Support | Resistance | SL | Triggers | |
|--|-------|-----------|-------|-------|---------|------------|-------|----------|-------|
| | | | | | | | | Lower | Upper |
| Building Materials & Construction | | | | | | | | | |
| Arabian cement (ARCC.CA) | 3.26 | Dn.-Corr. | — | — | 3.17 | 3.40 | 3.00 | — | — |
| El Ezz Steel Rebar's (ESRS.CA) | 9.82 | Bearish | — | — | 9.80 | 10.60 | — | — | — |
| GB auto (AUTO.CA) | 3.84 | Dn.-Corr. | — | — | 3.75 | 3.97 | 3.48 | — | — |
| Orascom construction (ORAS.CA) | 93.50 | Dn.-Corr. | — | — | 93.00 | 96.00 | 81.00 | — | — |
| South Valley Cement (SVCE.CA) | 2.05 | Bullish | 2.18 | 2.40 | 2.00 | 2.18 | 1.84 | — | — |
| Elsweddy Cables (SWDY.CA) | 10.03 | Dn.-Corr. | — | — | 9.60 | 10.15 | 9.60 | — | — |
| Upper Egypt general contracting (UEGC.CA) | 1.092 | Dn.-Corr. | — | — | 1.09 | 1.18 | 0.995 | — | — |
| Chemicals | | | | | | | | | |
| Abu-Qir fertilizers (ABUK.CA) | 21.30 | Dn.-Corr. | — | — | 20.60 | 21.70 | 19.20 | — | — |
| Egyptian Financial & Indust. (EFIC.CA) | 11.86 | Up-Corr. | — | — | 11.85 | 12.80 | 11.10 | — | — |
| Egyptian chemical industries-Kima (EGCH.CA) | 4.17 | Up-Corr. | — | — | 4.00 | 4.25 | 3.80 | — | — |
| Communications | | | | | | | | | |
| Orascom investment holding (OIH.CA) | N/A | Bullish | 0.64√ | 0.68 | 0.64 | 0.68 | 0.55 | — | — |
| Telecom Egypt (ETEL.CA) | 11.50 | Up-Corr. | — | — | 11.40 | 11.90 | 11.40 | — | — |
| Financial Services | | | | | | | | | |
| Abu Dhabi International Bank (ADIB.CA) | 11.92 | Dn.-Corr. | — | — | 11.20 | 12.10 | 11.20 | — | — |
| Arabian for investments & development (AIH.CA) | 0.70 | Dn.-Corr. | — | — | 0.68 | 0.71 | 0.59 | — | — |
| Amer holding group (AMER.CA) | 1.205 | Dn.-Corr. | — | — | 1.14 | 1.25 | 0.98 | — | — |
| Commercial International Bank (COMI.CA) | 60.51 | Up-Corr. | — | — | 60.00 | 63.00 | 58.50 | — | — |
| Export development bank of Egypt (EXPA.CA) | 13.88 | Up-Corr. | — | — | 13.30 | 14.00 | 13.30 | — | — |
| Holding Companies | | | | | | | | | |
| CI capital holding for financial investments (CICH.CA) | 4.59 | Bullish | 4.20√ | 4.50√ | 4.35 | 4.50 | 4.00 | — | — |
| Citadel capital (CCAP.CA) | 1.531 | Up-Corr. | — | — | 1.53 | 1.60 | 1.39 | — | — |
| Hermes Holding (HRHO.CA) | 15.87 | Bullish | 16.60 | 17.80 | 15.20 | 17.10 | 14.60 | — | — |
| Kuwaiti Holding (EKHO.CA) | 1.118 | Up-Corr. | — | — | 1.09 | 1.18 | 0.94 | — | — |
| MM group for industry & international trade (MTIE.CA) | 9.68 | Dn.-Corr. | — | — | 9.10 | 9.70 | 8.70 | — | — |
| Pioneers holding (PIOH.CA) | 5.55 | Bullish | 5.95 | 6.30 | 5.40 | 5.95 | 4.45 | — | — |
| Housing & Real Estate | | | | | | | | | |
| Egyptian For Tourism Resorts (EGTS.CA) | 1.52 | Up-Corr. | — | — | 1.51 | 1.60 | 1.45 | — | — |
| Elshams housing (ELSH.CA) | 5.14 | Dn.-Corr. | — | — | 5.05 | 5.35 | 4.85 | — | — |
| Emaar holding (EMFD.CA) | 2.50 | Dn.-Corr. | — | — | 2.45 | 2.65 | 2.45 | — | — |
| Heliopolis housing & development (HELL.CA) | 5.56 | Up-Corr. | — | — | 5.50 | 5.90 | 5.50 | — | — |
| Medinet Nasr for housing & Deve. (MNHD.CA) | 3.83 | Up-Corr. | — | — | 3.80 | 3.97 | 3.75 | — | — |
| 6th. October Deve. Inv. (OCDI.CA) | 15.61 | Flat | — | — | — | — | 13.90 | 15.15 | 16.20 |
| Palm hills development Co. (PHDC.CA) | 1.727 | Bullish | 1.86 | 2.00 | 1.70 | 1.86 | 1.53 | — | — |
| Talaat Mustafa group holding (TMGH.CA) | 6.92 | Dn.-Corr. | — | — | 6.60 | 7.00 | 6.30 | — | — |
| Mining & Gas | | | | | | | | | |
| Alexandria Mineral Oils Co. (AMOC.CA) | 3.25 | Dn.-Corr. | — | — | 3.13 | 3.37 | 3.00 | — | — |
| Sidi Kerir Petrochemicals (SKPC.CA) | 10.11 | Dn.-Corr. | — | — | 9.80 | 10.60 | 9.20 | — | — |
| Textiles & Clothes | | | | | | | | | |
| Arab Co. for asset management & Deve. (ACAMD.CA) | N/A | Up-Corr. | — | — | 1.15 | 1.20 | 1.07 | — | — |
| Arab cotton ginning (ACGC.CA) | 3.25 | Up-Corr. | — | — | 3.20 | 3.45 | 2.85 | — | — |
| Oriental Weavers (ORWE.CA) | 6.82 | Up-Corr. | — | — | 6.50 | 7.00 | 6.50 | — | — |
| Other Sectors | | | | | | | | | |
| Egyptian Media Production City (MPRC.CA) | 7.82 | Up-Corr. | — | — | 7.45 | 8.20 | 5.40 | — | — |
| Egyptian Transport - Egytrans (ETRS.CA) | 11.70 | Bullish | 12.40 | 13.20 | 11.60 | 12.40 | 10.40 | — | — |
| Orascom holding development (ORHD.CA) | 4.85 | Dn.-Corr. | — | — | 4.85 | 5.35 | 4.45 | — | — |
| United Arab Shipping (UASG.CA) | 1.20 | Dn.-Corr. | — | — | 1.15 | 1.23 | 1.05 | — | — |

Disclaimer

- This publication has been prepared by Blom Egypt Securities for information purposes only.
- It is not intended as an offer to buy or sell or a solicitation of an offer to buy or sell the securities mentioned.
- The information & opinions in this publication were prepared by Blom Egypt Securities research department accepts no liability or legal responsibility for losses & damages incurred arising from the use of this publication or its contents.

Blom Egypt Securities
Samir M. Azmi, CFTe, CETA
Senior Technical Analyst
samir.azmi@blomsecurities.com



Guidelines for using BLOM daily Technical Analysis Report

| | |
|----------------------------|---|
| <u>Close:</u> | Is recorded as the last trade in the session. |
| <u>Trend:</u> | |
| Bullish : | The strategy is to buy the dips. |
| Bearish : | The strategy is to sell the rallies. |
| Flat : | The strategy is to trade the range between the triggers. |
| Up-Corr. : | A move against the major trend when it is down. |
| Dn.-Corr. : | A move against the major trend when it is up. |
| <u>Targets :</u> | Take some profit by reducing a portion of the position whenever a price target is been hit. |
| <u>Support :</u> | A level below market price (previous lows) where buyers showed strength, in a bull market buy near the support and don't sell on the resistance. A break below the Support is considered to be a bearish sign. |
| <u>Resistance :</u> | A level above market price (previous highs) where sellers showed strength, in a bear market sell near the resistance level and don't buy on the support. A break above the resistance is considered to be a bullish sign. |
| <u>Stop Loss :</u> | Must exit the current position whenever the closing price is (1% to 2%) below the stop loss and confirmed by volume. |
| <u>Triggers :</u> | The range between the lower trigger and the upper is used for trading, break of any of them, the move would continue in the same direction. |
| <u>Yellow rows:</u> | indication that the stock closed below/above support, stop-loss, or resistance but the break is not confirmed yet. |

Disclaimer

- This publication has been prepared by Blom Egypt Securities for information purposes only.
- It is not intended as an offer to buy or sell or a solicitation of an offer to buy or sell the securities mentioned.
- The information & opinions in this publication were prepared by Blom Egypt Securities research department accepts no liability or legal responsibility for losses & damages incurred arising from the use of this publication or its contents.

Blom Egypt Securities
Samir M. Azmi, CFTe, CETA
Senior Technical Analyst
samir.azmi@blomsecurities.com