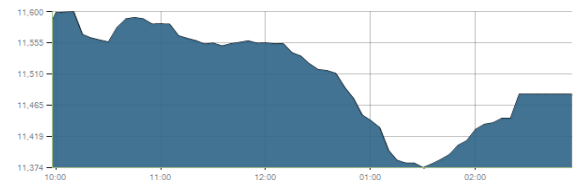


### Indices intraday trends

#### EGX 30

مؤشر EGX 30  
اليوم - 10/11/2021

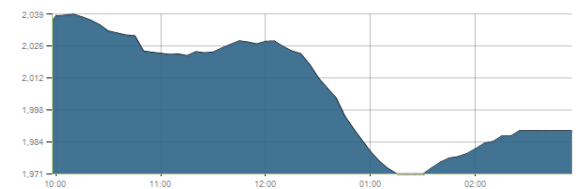


### Key Levels

Support 1	11320-11200	Resistance 1	11675
Support 2	11100	Resistance 2	12250

#### EGX 50 EWI

مؤشر EGX 50 EWI  
اليوم - 10/11/2021

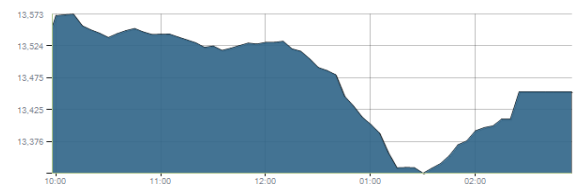


### Key Levels

Close		1989.28	
Support 1	1970	Resistance 1	2060
Support 2	1890	Resistance 2	2120

#### EGX 30 capped

مؤشر EGX 30 Capped  
اليوم - 10/11/2021



### Key Levels

Close		13452.96	
Support 1	13470	Resistance 1	13820
Support 2	13330	Resistance 2	14100

### Market Commentary:

The EGX30 witnessed a downward move approaching near our mentioned support zone where rebounding process took place reducing the losses but the close remained nearer the session's low.

Yet, levels are still the same and so for our outlook. Trading should be very selective and conservative keeping close stops placed and respected to reduce market risk. Notice that the mentioned support zone should be respected in any decline as any violation to it will indicate that bears are in control further decline will follow.

Close	11480.50	Trend	Dn.-Corr.
Pre. Close	11588.42	Target 1	—
Change	↓ 107.92 ( 0.93% )	Target 2	—
Day's range	11601.14 — 11372.58	Stop-loss	10680
52week's high	11675.69	52week's low	9769.18.18

#### Disclaimer

- This publication has been prepared by Blom Egypt Securities for information purposes only.
- It is not intended as an offer to buy or sell or a solicitation of an offer to buy or sell the securities mentioned.
- The information & opinions in this publication were prepared by Blom Egypt Securities research department accepts no liability or legal responsibility for losses & damages incurred arising from the use of this publication or its contents.

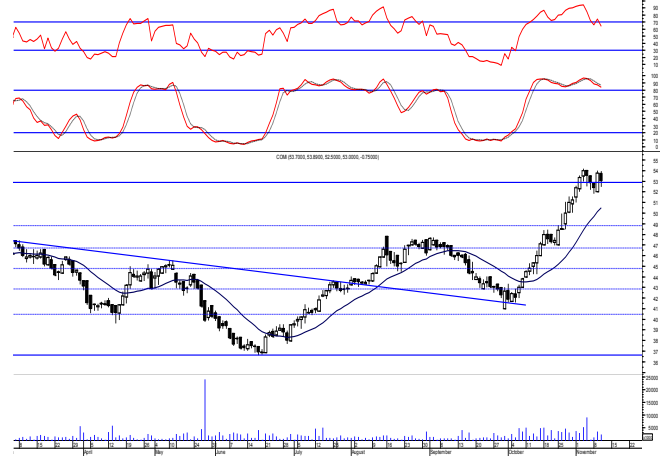
**Blom Egypt Securities**  
Samir M. Azmi, CFTe, CETA  
Senior Technical Analyst  
samir.azmi@blomsecurities.com



**Commercial international bank (COMI.CA):**

Prices managed to defend the support level 52.80 closing slightly negative keeping levels unchanged and so for our outlook. As we said, remaining above the mentioned support keeps the stock in bullish mode targeting 57.70. Defending the mentioned support levels keeps bullish sentiment intact where we use the mentioned range to safely trade on.

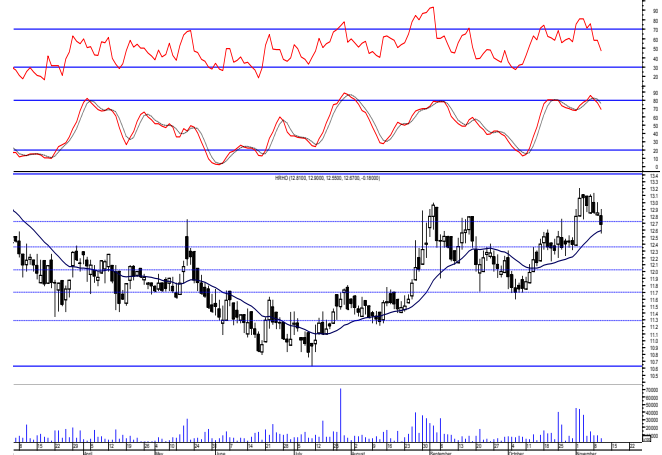
Support levels: 52.80, 51.60  
Resistance levels: 57.70, (63.00-64.05)



**Hermes Holding (HRHO.CA):**

Prices closed in red within our support zone as selling pressure dominated but still was able to halt the decline keeping levels the same and so for our outlook. Existing positions are advised to hold keeping stops placed and respected below 12.10 as any decline below will give back the hand to selling party.

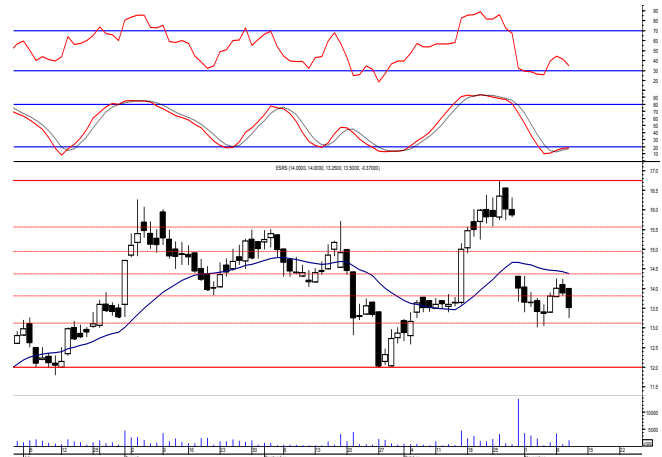
Support levels: (12-75-12.60), 12.10  
Resistance levels: 13.40, 14.25



**El-Ezz steel rebar's' (ESRS.CA):**

Prices witnessed a downward move failing to defend the support level 13.80 turning it into resistance as selling pressure dominated. The decline was halted after reaching the support level 13.20 where as we said represents an important level and should be watched carefully

Support levels: 13.20, 12.00  
Resistance levels: 13.80, 14.50



**Disclaimer**

- This publication has been prepared by Blom Egypt Securities for information purposes only.
- It is not intended as an offer to buy or sell or a solicitation of an offer to buy or sell the securities mentioned.
- The information & opinions in this publication were prepared by Blom Egypt Securities research department accepts no liability or legal responsibility for losses & damages incurred arising from the use of this publication or its contents.

**Blom Egypt Securities**  
**Samir M. Azmi, CFTe, CETA**  
Senior Technical Analyst  
samir.azmi@blomsecurities.com



Most active Stocks

Daily Technical Analysis Report

11 Nov, 2021

Stock Name (Reuters' Code)	Close	Trend	T1	T2	Support	Resistance	SL	Triggers	
								Lower	Upper
<b>Building Materials &amp; Construction</b>									
Arabian cement (ARCC.CA)	3.61	Up-Corr.	—	—	3.45	3.80	3.20	—	—
El Ezz Steel Rebar's (ESRS.CA)	13.50	Dn.-Corr.	—	—	13.20	13.80	13.20	—	—
GB auto (AUTO.CA)	4.00	Dn.-Corr.	—	—	3.95	4.10	3.75	—	—
Orascom construction (ORAS.CA)	68.19	Dn.-Corr.	—	—	68.50	71.70	68.50	—	—
South Valley Cement (SVCE.CA)	1.366	Bearish	—	—	1.324	1.50	—	—	—
Elsweddy Cables (SWDY.CA)	8.20	UP-Corr.	—	—	7.90	8.35	7.90	—	—
Upper Egypt general contracting (UEGC.CA)	0.639	Up-Corr.	—	—	0.614	0.65	0.57	—	—
<b>Chemicals</b>									
Abu-Qir fertilizers (ABUK.CA)	19.50	Dn.-Corr.	—	—	19.20	19.90	19.20	—	—
Egyptian Financial & Indust. (EFIC.CA)	11.93	Bearish	—	—	11.85	12.15	—	—	—
Egyptian chemical industries-Kima (EGCH.CA)	3.30	Up-Corr.	—	—	3.30	3.55	3.00	—	—
<b>Communications</b>									
Fawry for banking tech. & electronic payment (FWRY.CA)	14.00	Up-Corr.	—	—	13.30	14.90	14.90	—	—
Orascom investment holding (OIH.CA)	0.23	Dn.-Corr.	—	—	0.215	0.25	0.215	—	—
Telecom Egypt (ETEL.CA)	13.83	Dn.-Corr.	—	—	13.25	13.90	12.90	—	—
<b>Financial Services</b>									
Abu Dhabi International Bank (ADIB.CA)	13.70	Up-Corr.	—	—	12.60	14.15	12.60	—	—
Arabian for investments & development (AIH.CA)	0.35	Bearish	—	—	0.31	0.37	—	—	—
Amer holding group (AMER.CA)	1.02	Dn.-Corr.	—	—	1.02	1.14	0.96	—	—
Commercial International Bank (COMI.CA)	53.00	Bullish	57.70	63.00	52.80	57.70	46.60	—	—
Export development bank of Egypt (EXPA.CA)	9.00	Bearish	—	—	8.10	9.20	—	—	—
<b>Holding Companies</b>									
Citadel capital (CCAP.CA)	1.224	Up-Corr.	—	—	1.17	1.24	1.09	—	—
Hermes Holding (HRHO.CA)	12.67	Dn.-Corr.	—	—	12.60	13.40	11.25	—	—
Kuwaiti Holding (EKHO.CA)	1.391	Bullish	1.23√	1.39√	1.23	1.39	1.11	—	—
MM group for industry & international trade (MTIE.CA)	6.06	Bearish	—	—	5.90	6.20	—	—	—
Orascom financial holding (OFH.CA)	0.221	Bearish	—	—	0.195	0.23	—	—	—
<b>Housing &amp; Real Estate</b>									
Egyptian For Tourism Resorts (EGTS.CA)	1.364	Bearish	—	—	1.21	1.47	—	—	—
Elshams housing (ELSH.CA)	6.13	Up-Corr.	—	—	6.05	6.80	5.40	—	—
Emaar holding (EMFD.CA)	2.55	Dn.-Corr.	—	—	2.50	2.645	2.28	—	—
Heliopolis housing & development (HELL.CA)	4.11	Bearish	—	—	4.10	4.60	—	—	—
Medinet Nasr for housing & Deve. (MNHD.CA)	2.32	Up-Corr.	—	—	2.25	2.42	2.16	—	—
6th. October Deve. Inv. (OCDI.CA)	17.90	Flat	—	—	—	—	16.90	17.90	19.25
Palm hills development Co. (PHDC.CA)	1.83	Dn.-Corr.	—	—	1.73	1.91	1.73	—	—
Talaat Mustafa group holding (TMGH.CA)	7.60	Dn.-Corr.	—	—	7.50	7.90	6.90	—	—
<b>Mining &amp; Gas</b>									
Alexandria Mineral Oils Co. (AMOC.CA)	3.80	Dn.-Corr.	—	—	3.75	4.05	3.55	—	—
Sidi Kerir Petrochemicals (SKPC.CA)	7.03	Bearish	—	—	6.80	7.20	—	—	—
<b>Textiles &amp; Clothes</b>									
Arab Co. for asset management & Deve. (ACAMD.CA)	0.419	Bearish	—	—	0.35	0.43	—	—	—
Arab cotton ginning (ACGC.CA)	1.659	Up-Corr.	—	—	1.62	1.778	1.455	—	—
Oriental Weavers (ORWE.CA)	8.30	Dn.-Corr.	—	—	8.05	8.55	7.50	—	—
<b>Other Sectors</b>									
Egyptian Media Production City (MPRC.CA)	4.73	Up-Corr.	—	—	4.75	5.10	4.40	—	—
Egyptian Transport - Egytrans (ETRS.CA)	11.30	Bearish	—	—	11.25	12.50	—	—	—
Orascom holding development (ORHD.CA)	5.36	Up-Corr.	—	—	5.10	5.60	4.64	—	—
United Arab Shipping (UASG.CA)	0.868	Bearish	—	—	0.80	0.945	—	—	—

Disclaimer

- This publication has been prepared by Blom Egypt Securities for information purposes only.
- It is not intended as an offer to buy or sell or a solicitation of an offer to buy or sell the securities mentioned.
- The information & opinions in this publication were prepared by Blom Egypt Securities research department accepts no liability or legal responsibility for losses & damages incurred arising from the use of this publication or its contents.

**Blom Egypt Securities**  
Samir M. Azmi, CFTe, CETA  
Senior Technical Analyst  
samir.azmi@blomsecurities.com



**Guidelines for using BLOM daily Technical Analysis Report**

<b><u>Close:</u></b>	Is recorded as the last trade in the session.
<b><u>Trend:</u></b>	
<b>Bullish :</b>	The strategy is to buy the dips.
<b>Bearish :</b>	The strategy is to sell the rallies.
<b>Flat :</b>	The strategy is to trade the range between the triggers.
<b>Up-Corr. :</b>	A move against the major trend when it is down.
<b>Dn.-Corr. :</b>	A move against the major trend when it is up.
<b><u>Targets :</u></b>	Take some profit by reducing a portion of the position whenever a price target is been hit.
<b><u>Support :</u></b>	A level below market price (previous lows) where buyers showed strength, in a bull market buy near the support and don't sell on the resistance. A break below the Support is considered to be a bearish sign.
<b><u>Resistance :</u></b>	A level above market price (previous highs) where sellers showed strength, in a bear market sell near the resistance level and don't buy on the support. A break above the resistance is considered to be a bullish sign.
<b><u>Stop Loss :</u></b>	Must exit the current position whenever the closing price is (1% to 2%) below the stop loss and confirmed by volume.
<b><u>Triggers :</u></b>	The range between the lower trigger and the upper is used for trading, break of any of them, the move would continue in the same direction.
<b><u>Yellow rows:</u></b>	indication that the stock closed below/above support, stop-loss, or resistance but the break is not confirmed yet.

**Disclaimer**

- This publication has been prepared by Blom Egypt Securities for information purposes only.
- It is not intended as an offer to buy or sell or a solicitation of an offer to buy or sell the securities mentioned.
- The information & opinions in this publication were prepared by Blom Egypt Securities research department accepts no liability or legal responsibility for losses & damages incurred arising from the use of this publication or its contents.

**Blom Egypt Securities**  
**Samir M. Azmi, CFTe, CETA**  
**Senior Technical Analyst**  
**samir.azmi@blomsecurities.com**