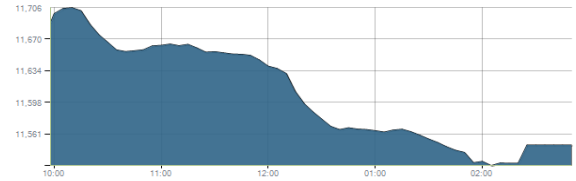




Indices intraday trends

EGX 30

مؤشر EGX 30
اليوم - 07/02/2022

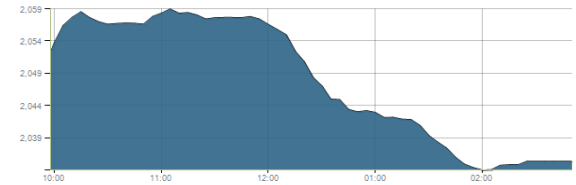


Key Levels

| | | | |
|-----------|-------|--------------|-------|
| Support 1 | 11440 | Resistance 1 | 11675 |
| Support 2 | 11200 | Resistance 2 | 11900 |

EGX 50 EWI

مؤشر EGX 50 EWI
اليوم - 07/02/2022

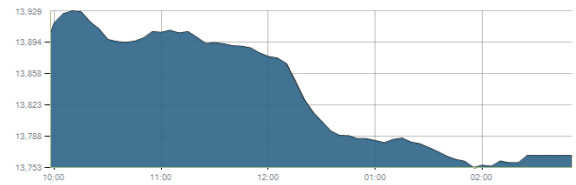


Key Levels

| | | | |
|-----------|------|--------------|------|
| Close | | 2035.98 | |
| Support 1 | 1990 | Resistance 1 | 2060 |
| Support 2 | 1940 | Resistance 2 | 2150 |

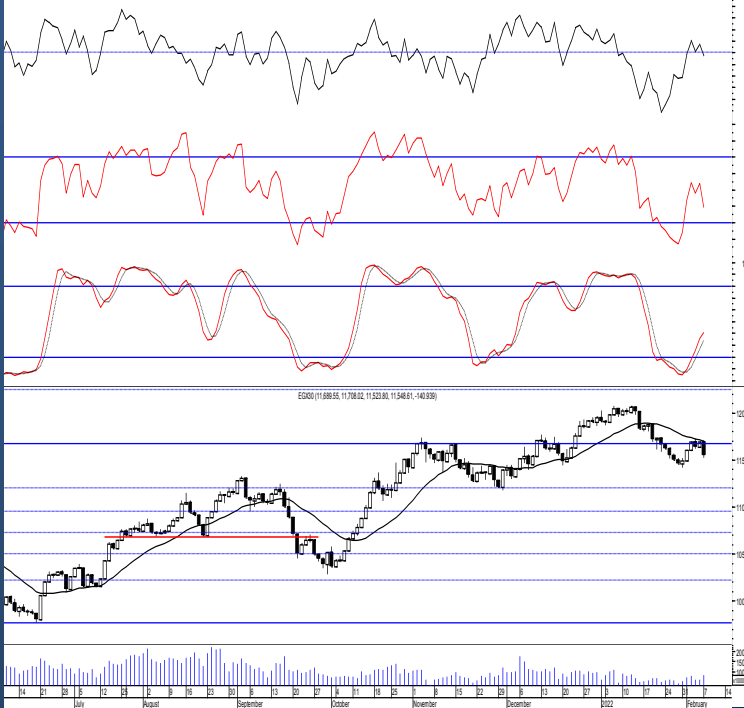
EGX 30 capped

مؤشر EGX 30 Capped
اليوم - 07/02/2022



Key Levels

| | | | |
|-----------|-------|--------------|-------|
| Close | | 13765.91 | |
| Support 1 | 13800 | Resistance 1 | 14150 |
| Support 2 | 13550 | Resistance 2 | 14325 |



Market Commentary:

The EGX30 failed to remain above the resistance level 11675 as selling pressure forced the index to remain mostly in red closing near the low keeping everything in place. Opened trades should watch the coming resistance level 11675 and may close portions around. Bear in mind that clearing it will give the bullish party the near term technical advantage therefore the market climbs higher easily. We recommend to be conservative and very selective keeping close stops placed and respected to reduce market risk. Notice that failing to defend 11440 will put the market under further stress therefore next support level will likely be reached (unexpected).

| | | | |
|---------------|---------------------|--------------|-----------|
| Close | 11548.61 | Trend | Dn.-Corr. |
| Pre. Close | 11689.55 | Target 1 | --- |
| Change | ↓ 140.94 (1.21%) | Target 2 | --- |
| Day's range | 11708.02 — 11523.80 | Stop-loss | 11200 |
| 52week's high | 12069.23 | 52week's low | 9769.18 |

Disclaimer

- This publication has been prepared by Blom Egypt Securities for information purposes only.
- It is not intended as an offer to buy or sell or a solicitation of an offer to buy or sell the securities mentioned.
- The information & opinions in this publication were prepared by Blom Egypt Securities research department accepts no liability or legal responsibility for losses & damages incurred arising from the use of this publication or its contents.

Blom Egypt Securities
Samir M. Azmi, CFTe, CETA
Senior Technical Analyst
samir.azmi@blomsecurities.com



Commercial international bank (COMI.CA):

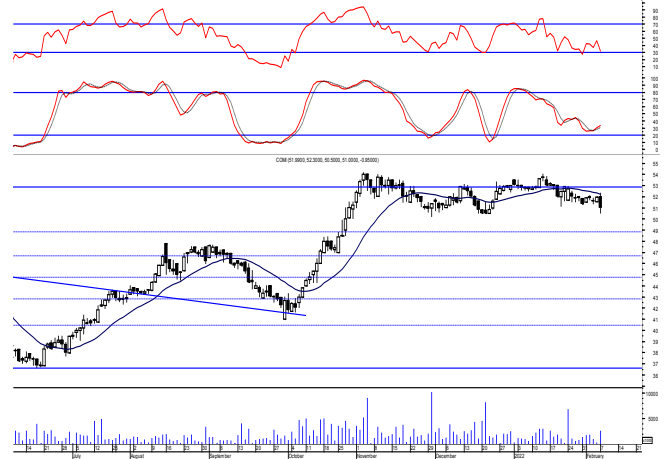
Prices witnessed a downward move violating the support level 51.60 turning it into resistance.

Notice that technical indicators are not clear and cannot be anticipated.

We still recommend to wait for a successful breakout to the resistance level 52.80. On the other hand existing positions, hold watching the mentioned supports very carefully.

Support levels: 50.20, 48.80

Resistance levels: 51.60, 52.80



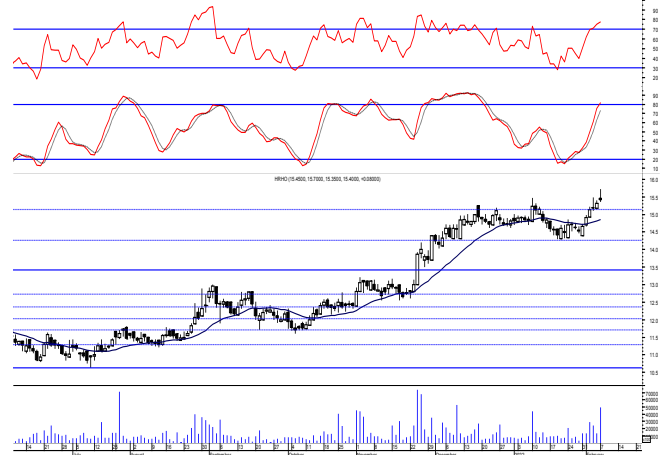
Hermes Holding (HRHO.CA):

Prices soared higher ahead of trading before selling pressure dominates closing back near low but in positive territory keeping. Our targets are still 16.35 & 17.40 where may use to trade gradually on.

We recommend to keep stops placed and respected below 15.25 as failing to defend in any decline will bring back prices to the same old range indicating weakness.

Support levels: 15.25, 14.45

Resistance levels: 16.35, 17.40



El-Ezz steel rebar's' (ESRS.CA):

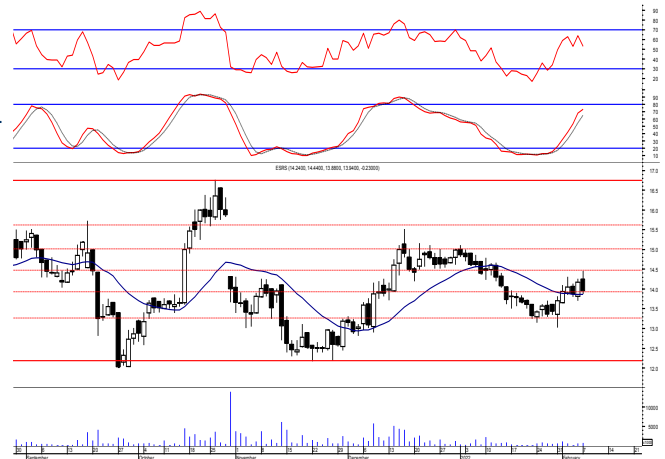
Prices witnessed an upward move ahead of trading before selling pressure dominates giving back most of the gains closing in red within the same range.

Notice that clearing 14.50 will give a chance for a new trades to be tried as rally will continue to the next resistance zone & may extend to the prominent resistance level 15.60

We recommend using trailing stop strategy to reduce market risk and defend profits.

Support levels: 13.80, 13.20

Resistance levels: 14.50, 15.00-15.10



Disclaimer

- This publication has been prepared by Blom Egypt Securities for information purposes only.
- It is not intended as an offer to buy or sell or a solicitation of an offer to buy or sell the securities mentioned.
- The information & opinions in this publication were prepared by Blom Egypt Securities research department accepts no liability or legal responsibility for losses & damages incurred arising from the use of this publication or its contents.

Blom Egypt Securities
Samir M. Azmi, CFTe, CETA
 Senior Technical Analyst
samir.azmi@blomsecurities.com



Most active Stocks

Daily Technical Analysis Report

8 Feb, 2022

| Stock Name (Reuters' Code) | Close | Trend | T1 | T2 | Support | Resistance | SL | Triggers | |
|--|-------|-----------|-------|-------|---------|------------|-------|----------|-------|
| | | | | | | | | Lower | Upper |
| Building Materials & Construction | | | | | | | | | |
| Arabian Cement (ARCC.CA) | 4.51 | Dn.-Corr. | — | — | 4.35 | 4.70 | 3.60 | — | — |
| GB Auto (AUTO.CA) | 5.43 | Dn.-Corr. | 5.85√ | 6.55 | 5.25 | 5.85 | 4.35 | — | — |
| El Ezz Steel Rebar's (ESRS.CA) | 13.94 | Up-Corr. | — | — | 13.80 | 14.50 | 13.20 | — | — |
| Orascom Construction (ORAS.CA) | 73.96 | Dn.-Corr. | — | — | 73.25 | 76.10 | 70.50 | — | — |
| South Valley Cement (SVCE.CA) | 1.452 | Dn.-Corr. | — | — | 1.36 | 1.48 | 1.36 | — | — |
| Elsweddy Cables (SWDY.CA) | 9.38 | Dn.-Corr. | — | — | 9.40 | 9.70 | 8.60 | — | — |
| Upper Egypt General Contracting (UEGC.CA) | 0.65 | Up-Corr. | — | — | 0.63 | 0.68 | 0.63 | — | — |
| Chemicals | | | | | | | | | |
| Abu-Qir Fertilizers (ABUK.CA) | 20.92 | Dn.-Corr. | — | — | 20.90 | 21.70 | 17.90 | — | — |
| Egyptian Financial & Indust. (EFIC.CA) | 13.85 | Up-Corr. | — | — | 13.60 | 14.20 | 12.65 | — | — |
| Egyptian Chemical Industries-Kima (EGCH.CA) | 3.80 | Up-Corr. | — | — | 3.55 | 3.85 | 3.40 | — | — |
| Communications | | | | | | | | | |
| Telecom Egypt (ETEL.CA) | 16.99 | Dn.-Corr. | — | — | 16.50 | 17.55 | 15.80 | — | — |
| Fawry For Banking Tech. & Electronic Payment (FWRY.CA) | 9.66 | Bearish | — | — | 9.20 | 10.15 | — | — | — |
| Orascom Investment Holding (OIH.CA) | 0.229 | Up-Corr. | — | — | 0.225 | 0.24 | 0.20 | — | — |
| Financial Services | | | | | | | | | |
| Abu Dhabi International Bank (ADIB.CA) | 13.47 | Up-Corr. | — | — | 13.10 | 13.50 | 11.85 | — | — |
| Arabian For Investments & Development (AIH.CA) | 0.405 | Bullish | 0.41 | 0.435 | 0.385 | 0.41 | 0.35 | — | — |
| Amer Holding Group (AMER.CA) | 0.941 | Up-Corr. | — | — | 0.925 | 0.975 | 0.85 | — | — |
| Credit Agricole (CIEB.CA) | 8.60 | Bullish | 8.45√ | 9.15 | 8.45 | 9.15 | 7.80 | — | — |
| Commercial International Bank (COMI.CA) | 51.00 | Dn.-Corr. | — | — | 50.20 | 51.60 | 50.20 | — | — |
| Export Development Bank Of Egypt (EXPA.CA) | 9.15 | Up-Corr. | — | — | 9.15 | 9.70 | 8.60 | — | — |
| Holding Companies | | | | | | | | | |
| B Investments Holdings (BINV.CA) | 10.47 | Up-Corr. | — | — | 10.40 | 11.00 | 9.80 | — | — |
| Citadel Capital (CCAP.CA) | 1.441 | Bullish | 1.43√ | 1.52 | 1.43 | 1.52 | 1.30 | — | — |
| Kuwaiti Holding (EKHO.CA) | 1.389 | Dn.-Corr. | — | — | 1.342 | 1.405 | 1.22 | — | — |
| Hermes Holding (HRHO.CA) | 15.40 | Bullish | 16.35 | 17.40 | 15.25 | 16.35 | 11.25 | — | — |
| MM Group For Industry & International Trade (MTIE.CA) | 7.19 | Dn.-Corr. | — | — | 7.15 | 7.65 | 6.60 | — | — |
| Orascom Financial Holding (OFH.CA) | 0.224 | Up-Corr. | — | — | 0.208 | 0.23 | 0.208 | — | — |
| Housing & Real Estate | | | | | | | | | |
| Egyptian For Tourism Resorts (EGTS.CA) | 1.521 | Up-Corr. | — | — | 1.465 | 1.63 | 1.23 | — | — |
| El-shams Housing (ELSH.CA) | 7.82 | Up-Corr. | — | — | 7.80 | 8.40 | 7.40 | — | — |
| Emaar Holding (EMFD.CA) | 2.99 | Bullish | 3.00√ | 3.20 | 2.80 | 3.10 | 2.70 | — | — |
| Heliopolis Housing & Development (HELI.CA) | 6.48 | Dn.-Corr. | — | — | 6.35 | 6.90 | 5.70 | — | — |
| Medinet Nasr For Housing & Deve. (MNHD.CA) | 2.89 | Up-Corr. | — | — | 2.90 | 3.05 | 2.52 | — | — |
| Palm Hills Development Co. (PHDC.CA) | 1.786 | Up-Corr. | — | — | 1.74 | 1.83 | 1.65 | — | — |
| Talaat Mustafa Group Holding (TMGH.CA) | 9.00 | Bullish | 10.05 | 11.15 | 8.90 | 10.05 | 8.20 | — | — |
| Mining & Gas | | | | | | | | | |
| Alexandria Mineral Oils Co. (AMOC.CA) | 3.84 | Dn.-Corr. | — | — | 3.75 | 3.90 | 3.33 | — | — |
| Sidi Kerir Petrochemicals (SKPC.CA) | 7.60 | Up-Corr. | — | — | 7.20 | 7.75 | 6.30 | — | — |
| Textiles & Clothes | | | | | | | | | |
| Arab Co. For Asset Management & Deve. (ACAMD.CA) | 0.467 | Up-Corr. | — | — | 0.445 | 0.485 | 0.42 | — | — |
| Arab Cotton Ginning (ACGC.CA) | 1.664 | Up-Corr. | — | — | 1.67 | 1.755 | 1.455 | — | — |
| Oriental Weavers (ORWE.CA) | 8.60 | Dn.-Corr. | — | — | 8.55 | 9.15 | 8.07 | — | — |
| Other Sectors | | | | | | | | | |
| Egyptian Media Production City (MPRC.CA) | 5.65 | Up-Corr. | — | — | 5.55 | 5.85 | 4.80 | — | — |
| Orascom Holding Development (ORHD.CA) | 5.60 | Up-Corr. | — | — | 5.55 | 5.80 | 5.15 | — | — |
| Delta Sugar (SUGR.CA) | 14.90 | Up-Corr. | — | — | 14.60 | 15.50 | 13.30 | — | — |
| United Arab Shipping (UASG.CA) | 0.928 | Up-Corr. | — | — | 0.915 | 0.985 | 0.80 | — | — |

Disclaimer

- This publication has been prepared by Blom Egypt Securities for information purposes only.
- It is not intended as an offer to buy or sell or a solicitation of an offer to buy or sell the securities mentioned.
- The information & opinions in this publication were prepared by Blom Egypt Securities research department accepts no liability or legal responsibility for losses & damages incurred arising from the use of this publication or its contents.

Blom Egypt Securities
Samir M. Azmi, CFTe, CETA
Senior Technical Analyst
samir.azmi@blomsecurities.com



Guidelines for using BLOM daily Technical Analysis Report

| | |
|----------------------------|---|
| <u>Close:</u> | Is recorded as the last trade in the session. |
| <u>Trend:</u> | |
| Bullish : | The strategy is to buy the dips. |
| Bearish : | The strategy is to sell the rallies. |
| Flat : | The strategy is to trade the range between the triggers. |
| Up-Corr. : | A move against the major trend when it is down. |
| Dn.-Corr. : | A move against the major trend when it is up. |
| <u>Targets :</u> | Take some profit by reducing a portion of the position whenever a price target is been hit. |
| <u>Support :</u> | A level below market price (previous lows) where buyers showed strength, in a bull market buy near the support and don't sell on the resistance. A break below the Support is considered to be a bearish sign. |
| <u>Resistance :</u> | A level above market price (previous highs) where sellers showed strength, in a bear market sell near the resistance level and don't buy on the support. A break above the resistance is considered to be a bullish sign. |
| <u>Stop Loss :</u> | Must exit the current position whenever the closing price is (1% to 2%) below the stop loss and confirmed by volume. |
| <u>Triggers :</u> | The range between the lower trigger and the upper is used for trading, break of any of them, the move would continue in the same direction. |
| <u>Yellow rows:</u> | indication that the stock closed below/above support, stop-loss, or resistance but the break is not confirmed yet. |

Disclaimer

- This publication has been prepared by Blom Egypt Securities for information purposes only.
- It is not intended as an offer to buy or sell or a solicitation of an offer to buy or sell the securities mentioned.
- The information & opinions in this publication were prepared by Blom Egypt Securities research department accepts no liability or legal responsibility for losses & damages incurred arising from the use of this publication or its contents.

Blom Egypt Securities
Samir M. Azmi, CFTe, CETA
Senior Technical Analyst
samir.azmi@blomsecurities.com