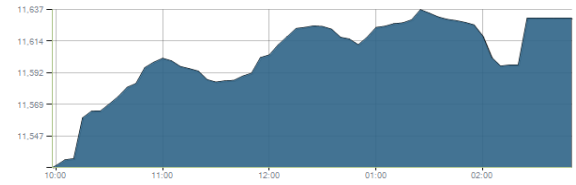


Indices intraday trends

EGX 30

مؤشر EGX 30
اليوم - 22/12/2021

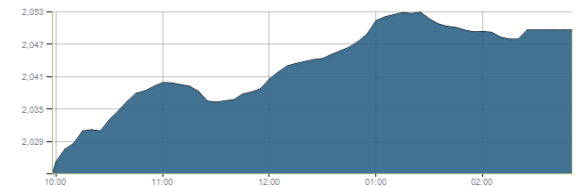


Key Levels

Support 1	11320-11200	Resistance 1	11675
Support 2	11100	Resistance 2	12250

EGX 50 EWI

مؤشر EGX 50 EWI
اليوم - 22/12/2021

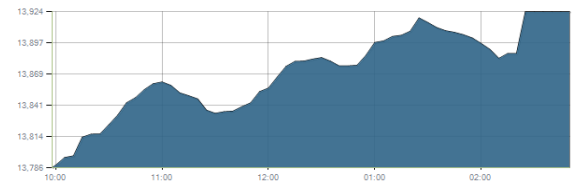


Key Levels

Close		2049.88	
Support 1	1970	Resistance 1	2060
Support 2	1860	Resistance 2	2150

EGX 30 capped

مؤشر EGX 30 Capped
اليوم - 22/12/2021



Key Levels

Close		13924.45	
Support 1	13800	Resistance 1	14150
Support 2	13550	Resistance 2	14325

Market Commentary:

The EGX30 continued higher approaching the major resistance level 11675 before selling process takes place pulling the index back closing near the session's high within the same levels leaving everything in place.

Confirming above the mentioned level only will turn the medium term trend up and targets will be 12250 & 12850, while short term, targets will be 11900 & 12070.

Trading should be very selective and conservative keeping close stops placed and respected to reduce market risk.

Notice that the mentioned support zone should be respected in any decline as any violation to it will indicate that bears are in control further decline will follow.

Close	11630.63	Trend	Flat
Pre. Close	11524.66	Target 1	—
Change	↑ 105.97 (0.92%)	Target 2	—
Day's range	1154.65 — 11636.71	Stop-loss	10680
52week's high	11675.69	52week's low	9769.18.18

Disclaimer

- This publication has been prepared by Blom Egypt Securities for information purposes only.
- It is not intended as an offer to buy or sell or a solicitation of an offer to buy or sell the securities mentioned.
- The information & opinions in this publication were prepared by Blom Egypt Securities research department accepts no liability or legal responsibility for losses & damages incurred arising from the use of this publication or its contents.

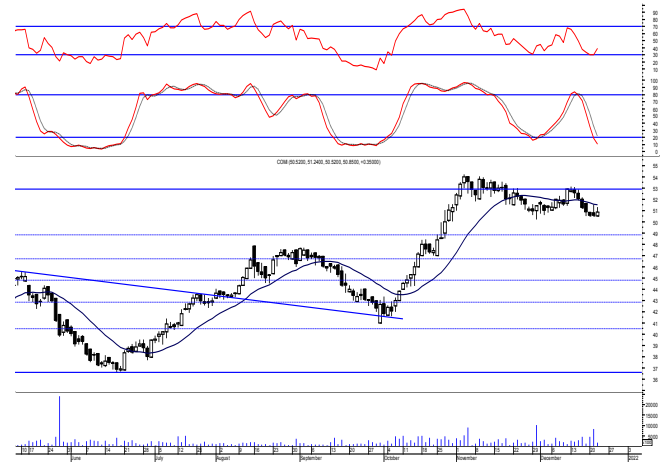
Blom Egypt Securities
Samir M. Azmi, CFTe, CETA
Senior Technical Analyst
samir.azmi@blomsecurities.com



Commercial international bank (COMI.CA):

Prices remained flat within the same range closing slightly positive keeping our outlook unchanged. Failing to defend the mentioned support is considered a negative sign indicating that bears are starting to gain the short term technical advantage. We recommend existing positions to hold, while new positions to wait for a confirmed buy signal to react safely on.

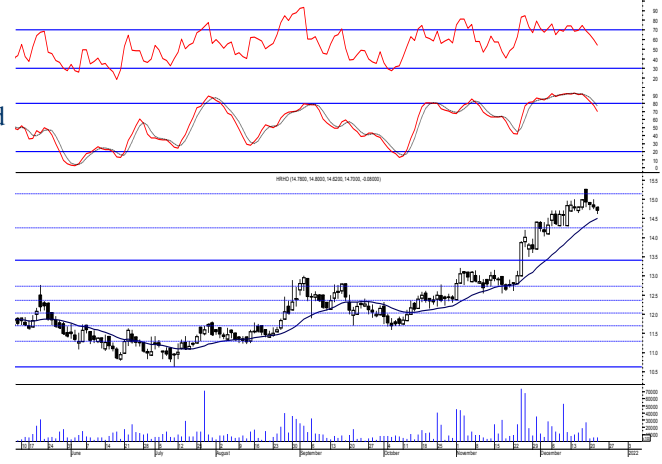
Support levels: 49.80, 48.80
Resistance levels: 51.60, 52.80



Hermes Holding (HRHO.CA):

Prices remained narrowly flat closing slightly negative within the same range leaving everything in place. We recommended to trade on the mentioned target, now we recommend to stay on cash till a confirmed buy signal is clear. Held positions are advised to keep protective stop placed and respected below 14.45.

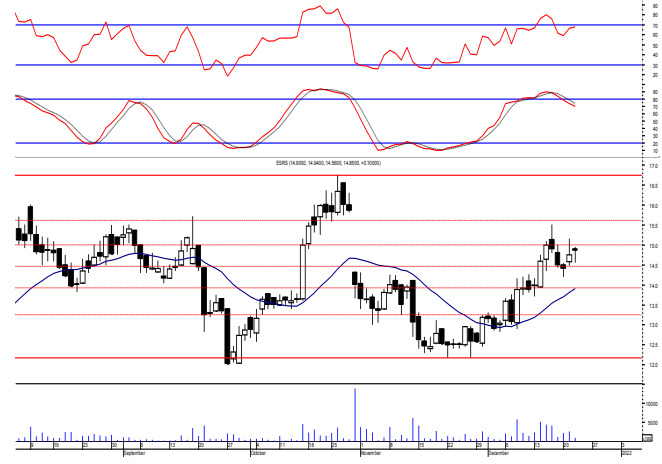
Support levels: 14.45, 13.40
Resistance levels: 16.35, 17.40



El-Ezz steel rebar's' (ESRS.CA):

Prices successfully tested the support level 14.50 before balanced trading performance dominates closing with a slight positive change leaving everything in place. Yet, it's recommended to stay on cash and wait for a confirmed buy signal to react safely on.

Support levels: 13.80, 13.20
Resistance levels: 14.50, 15.65



Disclaimer

- This publication has been prepared by Blom Egypt Securities for information purposes only.
- It is not intended as an offer to buy or sell or a solicitation of an offer to buy or sell the securities mentioned.
- The information & opinions in this publication were prepared by Blom Egypt Securities research department accepts no liability or legal responsibility for losses & damages incurred arising from the use of this publication or its contents.

Blom Egypt Securities
Samir M. Azmi, CFTe, CETA
Senior Technical Analyst
samir.azmi@blomsecurities.com



Most active Stocks

Daily Technical Analysis Report

23 Dec, 2021

Stock Name (Reuters' Code)	Close	Trend	T1	T2	Support	Resistance	SL	Triggers	
								Lower	Upper
Building Materials & Construction									
Arabian cement (ARCC.CA)	4.38	Bullish	4.60	4.90	4.10	4.60	3.60	---	---
El Ezz Steel Rebar's (ESRS.CA)	14.85	Up-Corr.	---	---	14.50	15.65	13.20	---	---
GB auto (AUTO.CA)	4.74	Dn.-Corr.	---	---	4.65	5.00	4.35	---	---
Orascom construction (ORAS.CA)	75.21	Dn.-Corr.	---	---	74.00	77.50	68.50	---	---
South Valley Cement (SVCE.CA)	1.415	Up-Corr.	---	---	1.32	1.45	1.243	---	---
Elsweddy Cables (SWDY.CA)	9.57	Bullish	9.70	10.25	9.40	10.25	8.60	---	---
Upper Egypt general contracting (UEGC.CA)	0.66	Up-Corr.	---	---	0.65	0.69	0.57	---	---
Chemicals									
Abu-Qir fertilizers (ABUK.CA)	20.60	Up-Corr.	---	---	19.90	20.60	17.90	---	---
Egyptian Financial & Indust. (EFIC.CA)	13.01	Up-Corr.	---	---	12.50	13.70	11.40	---	---
Egyptian chemical industries-Kima (EGCH.CA)	3.75	Up-Corr.	---	---	3.50	3.85	3.00	---	---
Communications									
Fawry for banking tech. & electronic payment (FWRY.CA)	12.44	Up-Corr.	---	---	12.30	13.60	11.80	---	---
Orascom investment holding (OIH.CA)	0.233	Up-Corr.	---	---	0.23	0.26	0.20	---	---
Telecom Egypt (ETEL.CA)	16.54	Bullish	16.05√	16.80√	16.00	16.80	14.70	---	---
Financial Services									
Abu Dhabi International Bank (ADIB.CA)	15.12	Up-Corr.	---	---	14.60	15.55	12.60	---	---
Arabian for investments & development (AIH.CA)	0.368	Up-Corr.	---	---	0.335	0.37	0.305	---	---
Amer holding group (AMER.CA)	0.913	Up-Corr.	---	---	0.85	0.95	0.85	---	---
Commercial International Bank (COMI.CA)	50.85	Dn.-Corr.	---	---	49.80	51.60	46.60	---	---
Export development bank of Egypt (EXPA.CA)	8.93	Up-Corr.	---	---	8.60	9.20	8.60	---	---
Holding Companies									
Citadel capital (CCAP.CA)	1.236	Up-Corr.	---	---	1.22	1.31	1.09	---	---
Hermes Holding (HRHO.CA)	14.70	Bullish	14.25√	15.20	14.45	15.20	11.25	---	---
Kuwaiti Holding (EKHO.CA)	1.34	Dn.-Corr.	---	---	1.315	1.36	1.22	---	---
MM group for industry & international trade (MTIE.CA)	6.34	Up-Corr.	---	---	6.15	6.40	5.60	---	---
Orascom financial holding (OFH.CA)	0.213	Bearish	---	---	0.195	0.23	---	---	---
Housing & Real Estate									
Egyptian For Tourism Resorts (EGTS.CA)	1.424	Up-Corr.	---	---	1.23	1.45	1.23	---	---
Elshams housing (ELSH.CA)	8.18	Up-Corr.	---	---	7.80	8.40	7.40	---	---
Emaar holding (EMFD.CA)	3.01	Bullish	3.00√	3.20	2.80	3.10	2.70	---	---
Heliopolis housing & development (HELI.CA)	6.21	Bullish	7.60	8.10	6.90	7.60	6.30	---	---
Medinet Nasr for housing & Deve. (MNHD.CA)	2.71	Up-Corr.	---	---	2.60	2.77	2.52	---	---
Palm hills development Co. (PHDC.CA)	1.923	Up-Corr.	---	---	1.83	1.94	1.72	---	---
Talaat Mustafa group holding (TMGH.CA)	8.86	Bullish	8.20√	8.90√	8.20	8.90	6.90	---	---
Mining & Gas									
Alexandria Mineral Oils Co. (AMOC.CA)	3.48	Up-Corr.	---	---	3.33	3.55	3.33	---	---
Sidi Kerir Petrochemicals (SKPC.CA)	7.07	Up-Corr.	---	---	6.80	7.25	6.30	---	---
Textiles & Clothes									
Arab Co. for asset management & Deve. (ACAMD.CA)	0.479	Up-Corr.	---	---	0.425	0.50	0.35	---	---
Arab cotton ginning (ACGC.CA)	1.682	Up-Corr.	---	---	1.65	1.81	1.455	---	---
Oriental Weavers (ORWE.CA)	8.49	Dn.-Corr.	---	---	8.05	8.55	7.50	---	---
Other Sectors									
Egyptian Media Production City (MPRC.CA)	6.07	Up-Corr.	---	---	6.00	6.40	4.80	---	---
Egyptian Transport - Egytrans (ETRS.CA)	11.00	Up-Corr.	---	---	9.80	11.30	9.80	---	---
Orascom holding development (ORHD.CA)	5.75	Up-Corr.	---	---	5.55	5.80	5.15	---	---
United Arab Shipping (UASG.CA)	0.964	Up-Corr.	---	---	0.915	0.98	0.80	---	---

Disclaimer

- This publication has been prepared by Blom Egypt Securities for information purposes only.
- It is not intended as an offer to buy or sell or a solicitation of an offer to buy or sell the securities mentioned.
- The information & opinions in this publication were prepared by Blom Egypt Securities research department accepts no liability or legal responsibility for losses & damages incurred arising from the use of this publication or its contents.

Blom Egypt Securities
Samir M. Azmi, CFTe, CETA
Senior Technical Analyst
samir.azmi@blomsecurities.com



Guidelines for using BLOM daily Technical Analysis Report

<u>Close:</u>	Is recorded as the last trade in the session.
<u>Trend:</u>	
Bullish :	The strategy is to buy the dips.
Bearish :	The strategy is to sell the rallies.
Flat :	The strategy is to trade the range between the triggers.
Up-Corr. :	A move against the major trend when it is down.
Dn.-Corr. :	A move against the major trend when it is up.
<u>Targets :</u>	Take some profit by reducing a portion of the position whenever a price target is been hit.
<u>Support :</u>	A level below market price (previous lows) where buyers showed strength, in a bull market buy near the support and don't sell on the resistance. A break below the Support is considered to be a bearish sign.
<u>Resistance :</u>	A level above market price (previous highs) where sellers showed strength, in a bear market sell near the resistance level and don't buy on the support. A break above the resistance is considered to be a bullish sign.
<u>Stop Loss :</u>	Must exit the current position whenever the closing price is (1% to 2%) below the stop loss and confirmed by volume.
<u>Triggers :</u>	The range between the lower trigger and the upper is used for trading, break of any of them, the move would continue in the same direction.
<u>Yellow rows:</u>	indication that the stock closed below/above support, stop-loss, or resistance but the break is not confirmed yet.

Disclaimer

- This publication has been prepared by Blom Egypt Securities for information purposes only.
- It is not intended as an offer to buy or sell or a solicitation of an offer to buy or sell the securities mentioned.
- The information & opinions in this publication were prepared by Blom Egypt Securities research department accepts no liability or legal responsibility for losses & damages incurred arising from the use of this publication or its contents.

Blom Egypt Securities
Samir M. Azmi, CFTe, CETA
Senior Technical Analyst
samir.azmi@blomsecurities.com