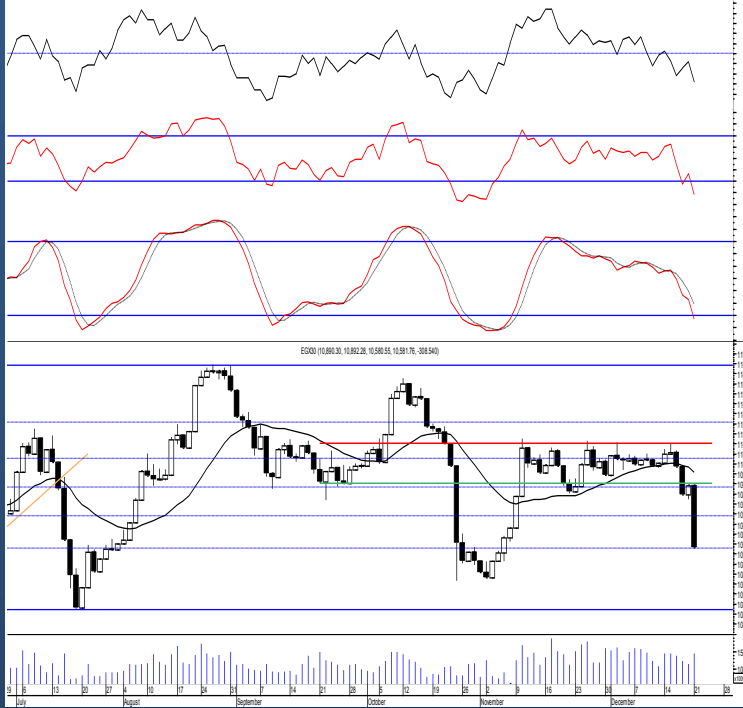




Egypt | EGX 30

Daily Technical Analysis Report

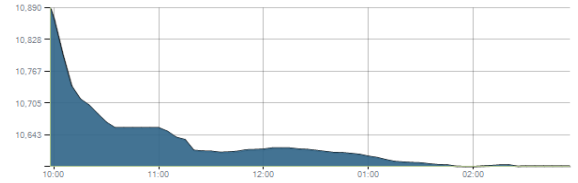
22 Dec, 2020



Indices intraday trends

EGX 30

مؤشر EGX 30  
اليوم - 21/12/2020

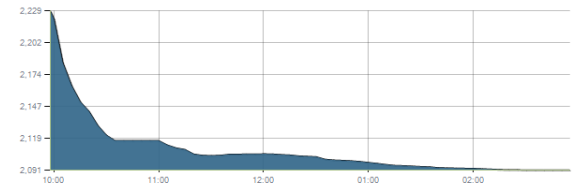


Key Levels

Support 1	10550	Resistance 1	10750
Support 2	10270	Resistance 2	10900-11100

EGX 50 EWI

مؤشر EGX 50 EWI  
اليوم - 21/12/2020

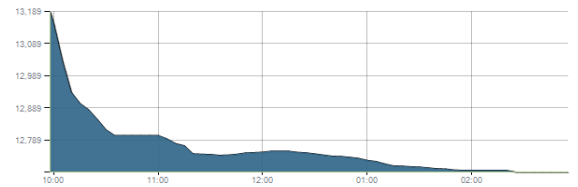


Key Levels

Close		2091.42	
Support 1	2130	Resistance 1	2200
Support 2	1965	Resistance 2	2300

EGX 30 capped

مؤشر EGX 30 Capped  
اليوم - 21/12/2020



Key Levels

Close		12689.12	
Support 1	12460	Resistance 1	12790
Support 2	12280	Resistance 2	13035

Market Commentary:

The EGX30 dived sharply as most of the stocks fell sharply pulling the index below the mentioned resistance zone and extended lower violating the support level 10750 closing near the next support 10550 which is considered very important retracement level.

Thus, we recommend to stay on cash till a confirmed buy signal is triggered.

Risk takers who decides holding their positons are advised to keep close stops placed and respected.

Close	10581.76	Trend	Up-Corr.
Pre. Close	10890.30	Target 1	---
Change	↓ 308.54 ( 2.83% )	Target 2	---
Day's range	10892.28 — 10580.55	Stop-loss	10425
52week's high	14831.20	52week's low	8113.82

Disclaimer

- This publication has been prepared by Blom Egypt Securities for information purposes only.
- It is not intended as an offer to buy or sell or a solicitation of an offer to buy or sell the securities mentioned.
- The information & opinions in this publication were prepared by Blom Egypt Securities research department accepts no liability or legal responsibility for losses & damages incurred arising from the use of this publication or its contents.

**Blom Egypt Securities**  
Samir M. Azmi, CFTe, CETA  
Senior Technical Analyst  
samir.azmi@blomsecurities.com



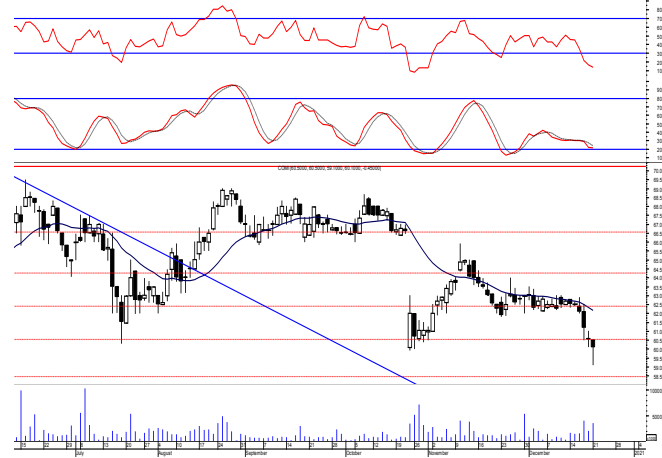
**Commercial international bank (COMI.CA):**

Prices sled sharply down ahead of the day trading deeper below the prominent support level 60.00 but buyers were still able to defend gaining back most of the losses closing near the high slightly negative keeping levels unchanged and so for our outlook.

We still recommend traded positions to stay on cash and wait for a confirmed buy signal to react safely on.

While held positions are advised to activate their stops and stay on cash.

Support levels: 60.00, 58.50  
Resistance levels: 63.00, 66.00



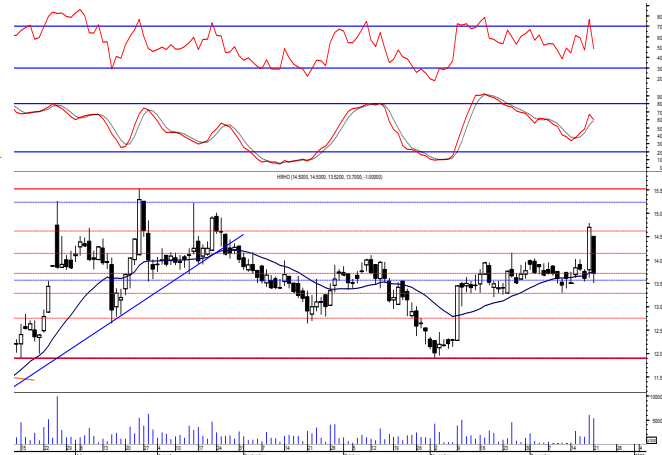
**Hermes Holding (HRHO.CA):**

Prices retreated below the important resistance level 14.10 failing to remain above after turning it into support. The decline reached back near the support level 13.50 closing within the same old range.

Failing to recover from yesterday's sell-off will confirm that the recent breakout was false so stops should be activated.

Close stops should always be placed and respected to protect the downside.

Support levels: 13.50, 12.65  
Resistance levels: 14.10, 15.25-15.55

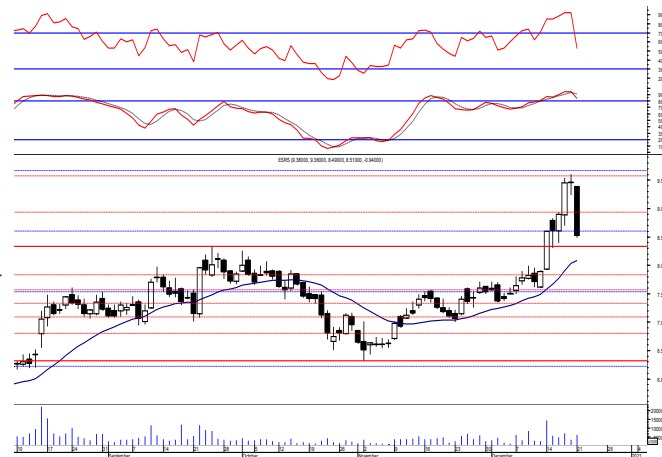


**El-Ezz steel rebar's' (ESRS.CA):**

Prices fell sharply down failing to continue the recent higher as selling pressure strongly dominated violating the support level 9.10. Notice that protective stop should be placed below 8.30 as failure to defend will indicate that the breakout was false and that sellers are still in control.

On other side, any violated protective stops should be respected and activated staying on cash till a reentry signal is clearly given.

Support levels: 8.30, 7.75-7.55  
Resistance levels: 9.10, 9.80



**Disclaimer**

- This publication has been prepared by Blom Egypt Securities for information purposes only.
- It is not intended as an offer to buy or sell or a solicitation of an offer to buy or sell the securities mentioned.
- The information & opinions in this publication were prepared by Blom Egypt Securities research department accepts no liability or legal responsibility for losses & damages incurred arising from the use of this publication or its contents.

**Blom Egypt Securities**  
**Samir M. Azmi, CFTe, CETA**  
**Senior Technical Analyst**  
**samir.azmi@blomsecurities.com**



Most active Stocks

Daily Technical Analysis Report

22 Dec, 2020

Stock Name (Reuters' Code)	Close	Trend	T1	T2	Support	Resistance	SL	Triggers	
								Lower	Upper
<b>Building Materials &amp; Construction</b>									
Arabian cement (ARCC.CA)	3.01	Bearish	—	—	2.95	3.05	—	—	—
El Ezz Steel Rebar's (ESRS.CA)	8.51	Dn.-Corr.	—	—	8.30	9.10	7.55	—	—
Egyptian iron & steel; Co. (IRON.CA)	3.09	Dn.-Corr.	—	—	3.00	3.15	2.80	—	—
GB auto (AUTO.CA)	3.10	Dn.-Corr.	—	—	3.10	3.32	2.80	—	—
Orascom construction (ORAS.CA)	80.00	Flat	—	—	—	—	81.00	81.00	85.50
South Valley Cement (SVCE.CA)	1.587	Bearish	—	—	1.50	1.67	—	—	—
Elswedey Cables (SWDY.CA)	8.72	Bullish	8.95√	9.30√	8.50	9.30	7.75	—	—
Upper Egypt general contracting (UEGC.CA)	0.726	Up-Corr.	—	—	0.74	0.80	0.74	—	—
<b>Chemicals</b>									
Abu-Qir fertilizers (ABUK.CA)	20.24	Bullish	21.60√	22.80	20.50	21.60	19.20	—	—
Egyptian Financial & Indust. (EFIC.CA)	11.44	Bearish	—	—	11.10	11.90	—	—	—
Egyptian chemical industries-Kima (EGCH.CA)	3.87	Up-Corr.	—	—	3.80	3.95	3.80	—	—
<b>Communications</b>									
Orascom investment holding (OIH.CA)	0.486	Up-Corr.	—	—	0.49	0.555	0.49	—	—
Telecom Egypt (ETEL.CA)	11.45	Up-Corr.	—	—	11.40	11.75	11.40	—	—
<b>Financial Services</b>									
Abu Dhabi International Bank (ADIB.CA)	11.50	Dn.-Corr.	—	—	11.20	12.00	11.20	—	—
Arabian for investments & development (AIH.CA)	0.578	Dn.-Corr.	—	—	0.59	0.645	0.59	—	—
Amer holding group (AMER.CA)	1.02	Dn.-Corr.	—	—	0.98	1.08	0.84	—	—
Commercial International Bank (COMI.CA)	60.10	Up-Corr.	—	—	60.00	63.00	60.00	—	—
Export development bank of Egypt (EXPA.CA)	14.22	Dn.-Corr.	—	—	14.35	15.10	14.35	—	—
<b>Holding Companies</b>									
CI capital holding for financial investments (CICH.CA)	3.83	Up-Corr.	—	—	3.75	4.00	3.55	—	—
Citadel capital (CCAP.CA)	1.37	Up-Corr.	—	—	1.39	1.45	1.39	—	—
Hermes Holding (HRHO.CA)	13.70	Up-Corr.	—	—	13.50	14.10	11.90	—	—
Kuwaiti Holding (EKHO.CA)	0.998	Up-Corr.	—	—	0.97	1.04	0.97	—	—
Pioneers holding (PIOH.CA)	3.59	Up-Corr.	—	—	3.60	3.85	3.60	—	—
<b>Housing &amp; Real Estate</b>									
Egyptian For Tourism Resorts (EGTS.CA)	1.381	Up-Corr.	—	—	1.30	1.42	1.30	—	—
Elshams housing (ELSH.CA)	4.49	Up-Corr.	—	—	4.45	4.60	4.15	—	—
Emaar holding (EMFD.CA)	2.27	Dn.-Corr.	—	—	2.13	2.31	2.13	—	—
Heliopolis housing & development (HELLI.CA)	5.70	Bearish	—	—	5.50	5.90	—	—	—
Medinet Nasr for housing & Deve. (MNHD.CA)	3.60	Up-Corr.	—	—	3.60	3.90	3.45	—	—
6th. October Deve. Inv. (OCDI.CA)	14.60	Dn.-Corr.	—	—	13.90	14.80	13.90	—	—
Palm hills development Co. (PHDC.CA)	1.304	Up-Corr.	—	—	1.28	1.33	1.28	—	—
Talaat Mustafa group holding (TMGH.CA)	6.30	Up-Corr.	—	—	6.30	6.55	6.30	—	—
<b>Mining &amp; Gas</b>									
Alexandria Mineral Oils Co. (AMOC.CA)	2.87	Dn.-Corr.	—	—	2.75	2.95	2.60	—	—
Sidi Kerir Petrochemicals (SKPC.CA)	8.39	Dn.-Corr.	—	—	8.15	8.60	8.15	—	—
<b>Textiles &amp; Clothes</b>									
Arab Co. for asset management & Deve. (ACAMD.CA)	5.04	Bearish	—	—	4.90	5.25	—	—	—
Arab cotton ginning (ACGC.CA)	2.82	Up-Corr.	—	—	2.85	3.05	2.85	—	—
Oriental Weavers (ORWE.CA)	6.76	Bearish	—	—	6.50	7.00	—	—	—
<b>Other Sectors</b>									
Egyptian Media Production City (MPRC.CA)	5.75	Up-Corr.	—	—	5.65	6.20	5.40	—	—
Egyptian Transport - Egytrans (ETRS.CA)	9.30	Up-Corr.	—	—	9.10	9.70	9.10	—	—
Orascom holding development (ORHD.CA)	4.50	Dn.-Corr.	—	—	4.45	4.85	4.45	—	—
United Arab Shipping (UASG.CA)	1.004	Up-Corr.	—	—	0.90	1.10	0.90	—	—

Disclaimer

- This publication has been prepared by Blom Egypt Securities for information purposes only.
- It is not intended as an offer to buy or sell or a solicitation of an offer to buy or sell the securities mentioned.
- The information & opinions in this publication were prepared by Blom Egypt Securities research department accepts no liability or legal responsibility for losses & damages incurred arising from the use of this publication or its contents.

**Blom Egypt Securities**  
Samir M. Azmi, CFTe, CETA  
Senior Technical Analyst  
samir.azmi@blomsecurities.com



### Guidelines for using BLOM daily Technical Analysis Report

<b><u>Close:</u></b>	Is recorded as the last trade in the session.
<b><u>Trend:</u></b>	
<b>Bullish :</b>	The strategy is to buy the dips.
<b>Bearish :</b>	The strategy is to sell the rallies.
<b>Flat :</b>	The strategy is to trade the range between the triggers.
<b>Up-Corr. :</b>	A move against the major trend when it is down.
<b>Dn.-Corr. :</b>	A move against the major trend when it is up.
<b><u>Targets :</u></b>	Take some profit by reducing a portion of the position whenever a price target is been hit.
<b><u>Support :</u></b>	A level below market price (previous lows) where buyers showed strength, in a bull market buy near the support and don't sell on the resistance. A break below the Support is considered to be a bearish sign.
<b><u>Resistance :</u></b>	A level above market price (previous highs) where sellers showed strength, in a bear market sell near the resistance level and don't buy on the support. A break above the resistance is considered to be a bullish sign.
<b><u>Stop Loss :</u></b>	Must exit the current position whenever the closing price is (1% to 2%) below the stop loss and confirmed by volume.
<b><u>Triggers :</u></b>	The range between the lower trigger and the upper is used for trading, break of any of them, the move would continue in the same direction.
<b><u>Yellow rows:</u></b>	indication that the stock closed below/above support, stop-loss, or resistance but the break is not confirmed yet.

#### Disclaimer

- This publication has been prepared by Blom Egypt Securities for information purposes only.
- It is not intended as an offer to buy or sell or a solicitation of an offer to buy or sell the securities mentioned.
- The information & opinions in this publication were prepared by Blom Egypt Securities research department accepts no liability or legal responsibility for losses & damages incurred arising from the use of this publication or its contents.

**Blom Egypt Securities**  
**Samir M. Azmi, CFTe, CETA**  
**Senior Technical Analyst**  
[samir.azmi@blomsecurities.com](mailto:samir.azmi@blomsecurities.com)