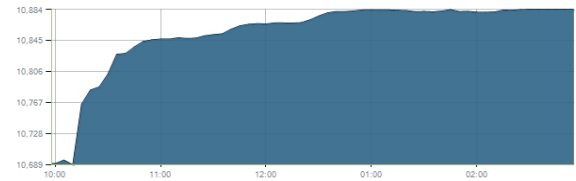




Indices intraday trends

EGX 30

مؤشر EGX 30  
اليوم - 23/08/2021

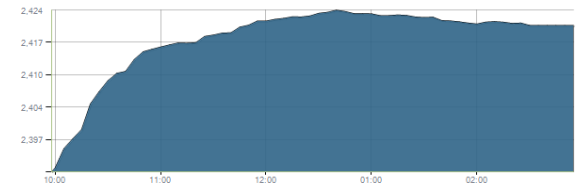


Key Levels

Support 1	10600	Resistance 1	10850-10950
Support 2	10400	Resistance 2	11200

EGX 50 EWI

مؤشر EGX 50 EWI  
اليوم - 23/08/2021

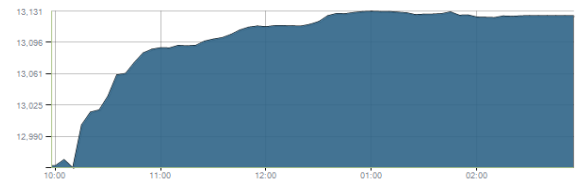


Key Levels

Close		2420.44	
Support 1	2370	Resistance 1	2450
Support 2	2315	Resistance 2	2500

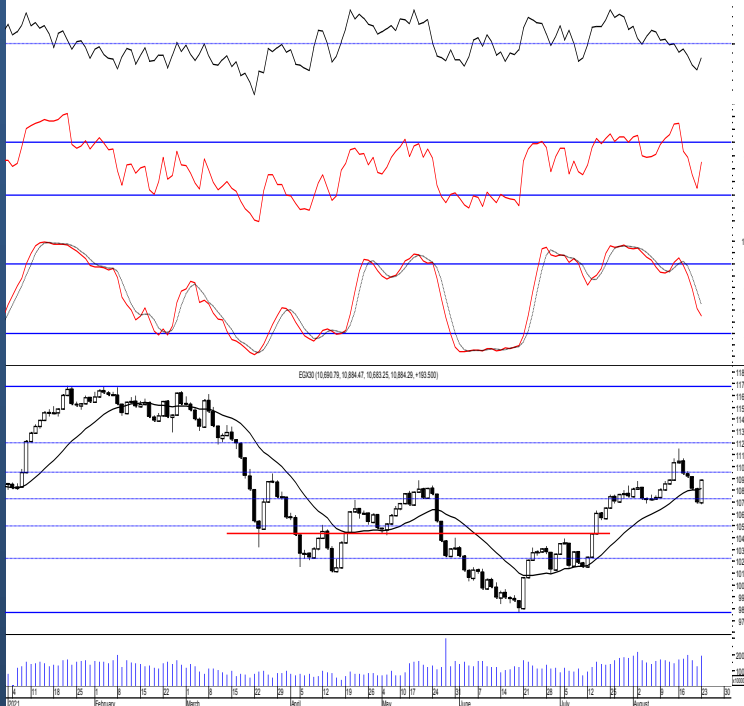
EGX 30 capped

مؤشر EGX 30 Capped  
اليوم - 23/08/2021



Key Levels

Close		13126.44	
Support 1	12970	Resistance 1	13130
Support 2	12830	Resistance 2	13400



Market Commentary:

The EGX30 witnessed a sharp upward move reaching our resistance zone 10850-10950 closing within. Trading volumes significantly increased indicating real buying strength suggesting high potential to extend higher which should be confirmed by clearing the mentioned resistance zone.

We still believe in upward potential so we recommend to buy gradually in the decline on the mentioned support levels keeping always close stops placed and respected.

Existing positions are advised to use trailing stop strategy to protect profits.

Close	10884.29	Trend	Up-Corr.
Pre. Close	10690.79	Target 1	—
Change	↑ 193.50 ( 1.81% )	Target 2	—
Day's range	10683.25 — 10884.47	Stop-loss	9900
52week's high	11675.69	52week's low	9769.18.18

Disclaimer

- This publication has been prepared by Blom Egypt Securities for information purposes only.
- It is not intended as an offer to buy or sell or a solicitation of an offer to buy or sell the securities mentioned.
- The information & opinions in this publication were prepared by Blom Egypt Securities research department accepts no liability or legal responsibility for losses & damages incurred arising from the use of this publication or its contents.

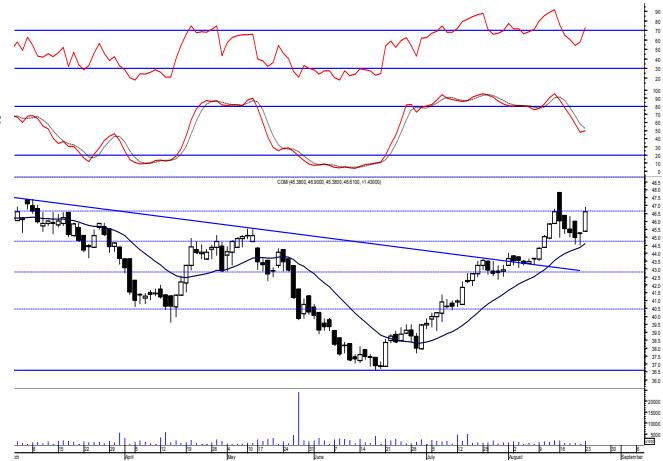
**Blom Egypt Securities**  
Samir M. Azmi, CFTe, CETA  
Senior Technical Analyst  
samir.azmi@blomsecurities.com



**Commercial international bank (COMI.CA):**

Prices witnessed an upward move reaching our resistance level 46.65 where the move was halted due to selling pressure took place from keeping everything in place. Our levels now are 44.70 serving as support while 46.65 acts as resistance. New positions are advised to wait for a clearing the mentioned resistance or a pullback near the mentioned support  
Trailing stop strategy should be followed to protect profits and reduce risk

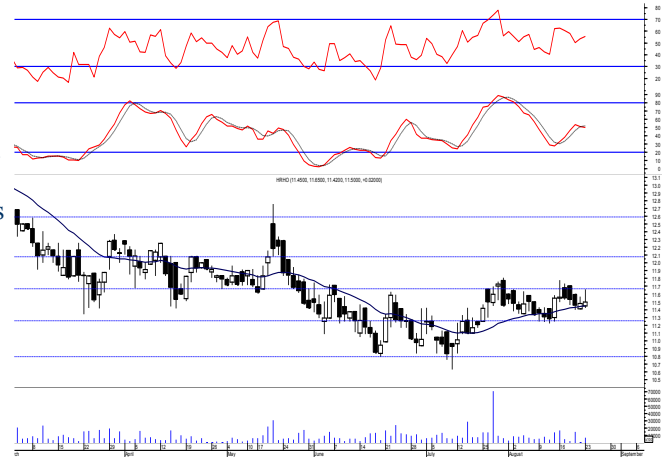
Support levels: 44.70, 42.30  
Resistance levels: 46.65, 48.80



**Hermes Holding (HRHO.CA):**

Prices remained flat within the same range closing slightly positive keeping levels the same and so for our outlook. As we said, we recommended to trade gradually on 11.70 and 12.10 which still have the potential to reach the second level. protective stop should be placed and respected below 11.25 as any decline below will give back the hand to selling party.

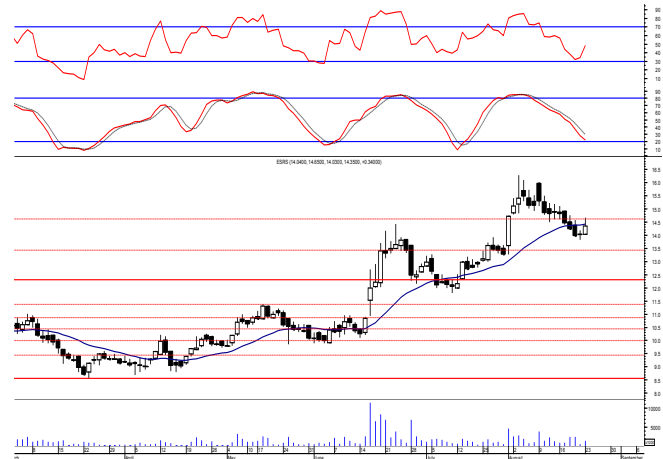
Support levels: 11.25, 10.80  
Resistance levels: 11.70, 12.10



**El-Ezz steel rebar's' (ESRS.CA):**

Prices closed slightly positive after trading narrowly flat as balanced trading performance remained keeping levels unchanged and so for our outlook. Further decline is now expected which will likely reach near the coming support 13.40 where we may buy the recent traded positions.

Support levels: 13.40, 12.30  
Resistance levels: (14.40-14.65), 16.00



**Disclaimer**

- This publication has been prepared by Blom Egypt Securities for information purposes only.
- It is not intended as an offer to buy or sell or a solicitation of an offer to buy or sell the securities mentioned.
- The information & opinions in this publication were prepared by Blom Egypt Securities research department accepts no liability or legal responsibility for losses & damages incurred arising from the use of this publication or its contents.

**Blom Egypt Securities**  
**Samir M. Azmi, CFTe, CETA**  
**Senior Technical Analyst**  
**samir.azmi@blomsecurities.com**



Most active Stocks

Daily Technical Analysis Report

24 Aug, 2021

Stock Name (Reuters' Code)	Close	Trend	T1	T2	Support	Resistance	SL	Triggers	
								Lower	Upper
<b>Building Materials &amp; Construction</b>									
Arabian cement (ARCC.CA)	5.49	Dn.-Corr.	—	—	5.30	5.60	4.50	—	—
El Ezz Steel Rebar's (ESRS.CA)	14.35	Dn.-Corr.	—	—	13.40	14.40	11.40	—	—
GB auto (AUTO.CA)	3.96	Up-Corr.	—	—	3.75	3.97	3.12	—	—
Orascom construction (ORAS.CA)	72.02	Dn.-Corr.	—	—	71.50	74.80	68.50	—	—
South Valley Cement (SVCE.CA)	2.47	Dn.-Corr.	—	—	2.20	2.47	1.95	—	—
Elsweddy Cables (SWDY.CA)	8.60	UP-Corr.	—	—	8.60	9.00	7.40	—	—
Upper Egypt general contracting (UEGC.CA)	0.878	Bullish	0.89	0.93	0.81	0.89	0.73	—	—
<b>Chemicals</b>									
Abu-Qir fertilizers (ABUK.CA)	19.00	Up-Corr.	—	—	18.30	19.70	18.30	—	—
Egyptian Financial & Indust. (EFIC.CA)	14.39	Flat	—	—	—	—	12.85	14.00	15.50
Egyptian chemical industries-Kima (EGCH.CA)	4.44	Dn.-Corr.	4.45√	4.95	4.45	4.95	3.75	—	—
<b>Communications</b>									
Orascom investment holding (OIH.CA)	0.238	Bullish	0.232√	0.257	0.232	0.257	0.192	—	—
Telecom Egypt (ETEL.CA)	14.39	Dn.-Corr.	15.20√	16.60	14.30	15.70	12.90	—	—
<b>Financial Services</b>									
Abu Dhabi International Bank (ADIB.CA)	16.67	Dn.-Corr.	—	—	16.25	17.30	14.60	—	—
Arabian for investments & development (AIH.CA)	0.498	Up-Corr.	—	—	0.48	0.505	0.46	—	—
Amer holding group (AMER.CA)	0.935	Up-Corr.	—	—	0.888	0.945	0.78	—	—
Commercial International Bank (COMI.CA)	46.61	Bullish	46.65√	48.80	44.70	46.65	42.30	—	—
Export development bank of Egypt (EXPA.CA)	11.88	Dn.-Corr.	—	—	11.60	12.50	9.90	—	—
<b>Holding Companies</b>									
Citadel capital (CCAP.CA)	1.237	Up-Corr.	—	—	1.21	1.31	1.09	—	—
Hermes Holding (HRHO.CA)	11.50	Up-Corr.	—	—	11.25	11.70	11.25	—	—
Kuwaiti Holding (EKHO.CA)	1.13	Bullish	1.13√	1.19	1.06	1.15	0.96	—	—
MM group for industry & international trade (MTIE.CA)	7.60	Dn.-Corr.	—	—	7.35	7.80	6.50	—	—
Orascom financial holding (OFH.CA)	0.289	Dn.-Corr.	—	—	0.275	0.31	0.275	—	—
Pioneers holding (PIOH.CA)	4.90	Bullish	5.45	6.10	4.80	5.15	4.55	—	—
<b>Housing &amp; Real Estate</b>									
Egyptian For Tourism Resorts (EGTS.CA)	2.35	Dn.-Corr.	—	—	2.15	2.37	1.77	—	—
Elshams housing (ELSH.CA)	13.59	Bullish	13.10√	14.50	13.10	14.50	8.20	—	—
Emaar holding (EMFD.CA)	2.43	Up-Corr.	—	—	2.38	2.50	2.12	—	—
Heliopolis housing & development (HELL.CA)	4.85	Up-Corr.	—	—	4.85	5.05	4.30	—	—
Medinet Nasr for housing & Deve. (MNHD.CA)	2.95	Up-Corr.	—	—	2.90	3.05	2.90	—	—
6th. October Deve. Inv. (OCDI.CA)	16.50	Dn.-Corr.	—	—	16.25	17.40	15.70	—	—
Palm hills development Co. (PHDC.CA)	1.781	Dn.-Corr.	—	—	1.70	1.80	1.60	—	—
Talaat Mustafa group holding (TMGH.CA)	6.85	Dn.-Corr.	—	—	6.65	7.00	6.30	—	—
<b>Mining &amp; Gas</b>									
Alexandria Mineral Oils Co. (AMOC.CA)	3.40	Dn.-Corr.	—	—	3.20	3.52	3.20	—	—
Sidi Kerir Petrochemicals (SKPC.CA)	10.69	Bearish	—	—	10.25	11.10	—	—	—
<b>Textiles &amp; Clothes</b>									
Arab Co. for asset management & Deve. (ACAMD.CA)	0.618	Up-Corr.	—	—	0.60	0.645	0.60	—	—
Arab cotton ginning (ACGC.CA)	1.90	Up-Corr.	—	—	1.70	1.92	1.70	—	—
Oriental Weavers (ORWE.CA)	8.40	Dn.-Corr.	—	—	8.25	8.65	7.50	—	—
<b>Other Sectors</b>									
Egyptian Media Production City (MPC.CA)	6.46	Bullish	6.90√	7.35	6.45	7.10	5.90	—	—
Egyptian Transport - Egytrans (ETRS.CA)	16.18	Up-Corr.	—	—	15.80	16.60	13.60	—	—
Orascom holding development (ORHD.CA)	4.95	Dn.-Corr.	—	—	4.95	5.35	4.95	—	—
United Arab Shipping (UASG.CA)	1.51	Bullish	1.60	1.73	1.47	1.73	1.15	—	—

Disclaimer

- This publication has been prepared by Blom Egypt Securities for information purposes only.
- It is not intended as an offer to buy or sell or a solicitation of an offer to buy or sell the securities mentioned.
- The information & opinions in this publication were prepared by Blom Egypt Securities research department accepts no liability or legal responsibility for losses & damages incurred arising from the use of this publication or its contents.

**Blom Egypt Securities**  
Samir M. Azmi, CFTe, CETA  
Senior Technical Analyst  
samir.azmi@blomsecurities.com



**Guidelines for using BLOM daily Technical Analysis Report**

<b><u>Close:</u></b>	Is recorded as the last trade in the session.
<b><u>Trend:</u></b>	
<b>Bullish :</b>	The strategy is to buy the dips.
<b>Bearish :</b>	The strategy is to sell the rallies.
<b>Flat :</b>	The strategy is to trade the range between the triggers.
<b>Up-Corr. :</b>	A move against the major trend when it is down.
<b>Dn.-Corr. :</b>	A move against the major trend when it is up.
<b><u>Targets :</u></b>	Take some profit by reducing a portion of the position whenever a price target is been hit.
<b><u>Support :</u></b>	A level below market price (previous lows) where buyers showed strength, in a bull market buy near the support and don't sell on the resistance. A break below the Support is considered to be a bearish sign.
<b><u>Resistance :</u></b>	A level above market price (previous highs) where sellers showed strength, in a bear market sell near the resistance level and don't buy on the support. A break above the resistance is considered to be a bullish sign.
<b><u>Stop Loss :</u></b>	Must exit the current position whenever the closing price is (1% to 2%) below the stop loss and confirmed by volume.
<b><u>Triggers :</u></b>	The range between the lower trigger and the upper is used for trading, break of any of them, the move would continue in the same direction.
<b><u>Yellow rows:</u></b>	indication that the stock closed below/above support, stop-loss, or resistance but the break is not confirmed yet.

**Disclaimer**

- This publication has been prepared by Blom Egypt Securities for information purposes only.
- It is not intended as an offer to buy or sell or a solicitation of an offer to buy or sell the securities mentioned.
- The information & opinions in this publication were prepared by Blom Egypt Securities research department accepts no liability or legal responsibility for losses & damages incurred arising from the use of this publication or its contents.

**Blom Egypt Securities**  
**Samir M. Azmi, CFTe, CETA**  
**Senior Technical Analyst**  
**samir.azmi@blomsecurities.com**