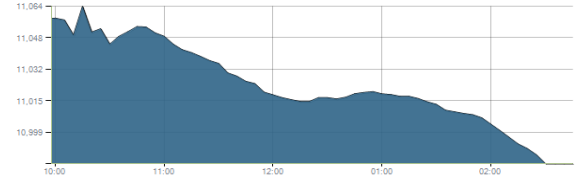


Indices intraday trends

EGX 30

مؤشر EGX 30  
اليوم - 16/12/2020

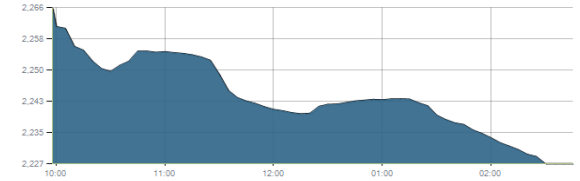


Key Levels

Support 1	10750	Resistance 1	10900-11100
Support 2	10550	Resistance 2	11500

EGX 50 EWI

مؤشر EGX 50 EWI  
اليوم - 16/12/2020

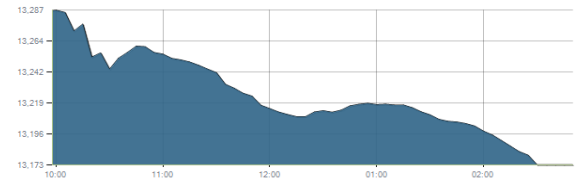


Key Levels

Close		2227.18	
Support 1	2200	Resistance 1	2300
Support 2	2130	Resistance 2	2400

EGX 30 capped

مؤشر EGX 30 Capped  
اليوم - 16/12/2020



Key Levels

Close		13173.25	
Support 1	13035	Resistance 1	13455
Support 2	12790	Resistance 2	13755

Market Commentary:

The EGX30 closed in red as selling pressure dominated within the resistance zone 10900-11100 leaving everything in place.

As we said, clearing the mentioned zone only will confirm the bull case, while being unable to clear or breaking below will keep bears in control.

Thus, we recommend to stay on cash till a confirmed buy signal is triggered.

Risk takers who decides holding their positions are advised to keep close stops placed and respected.

Close	10983.03	Trend	Up-Corr.
Pre. Close	11057.62	Target 1	---
Change	↓ 74.59 ( 0.67% )	Target 2	---
Day's range	11063.83 — 10983.03	Stop-loss	10425
52week's high	14831.20	52week's low	8113.82

Disclaimer

- This publication has been prepared by Blom Egypt Securities for information purposes only.
- It is not intended as an offer to buy or sell or a solicitation of an offer to buy or sell the securities mentioned.
- The information & opinions in this publication were prepared by Blom Egypt Securities research department accepts no liability or legal responsibility for losses & damages incurred arising from the use of this publication or its contents.

**Blom Egypt Securities**  
Samir M. Azmi, CFTe, CETA  
Senior Technical Analyst  
samir.azmi@blomsecurities.com



**Commercial international bank (COMI.CA):**

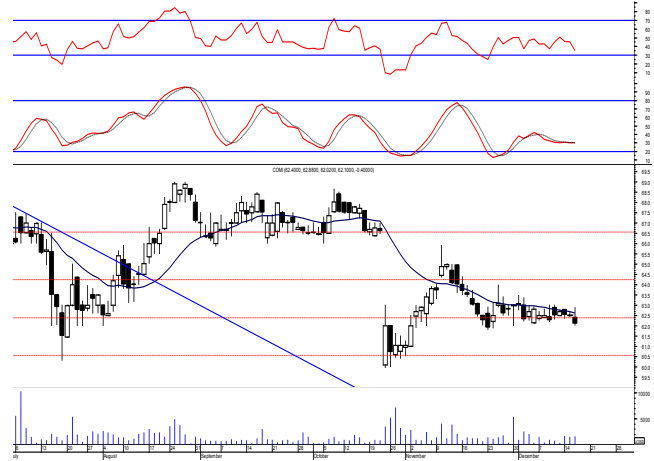
Prices closed slightly negative after quiet trading performance keeping levels unchanged and so for our outlook.

We still recommend traded positions to stay on cash and wait for a confirmed buy signal to react safely on.

While held positions are advised to activate their stops and stay on cash.

Support levels: 60.00, 58.50

Resistance levels: 63.00, 66.00



**Hermes Holding (HRHO.CA):**

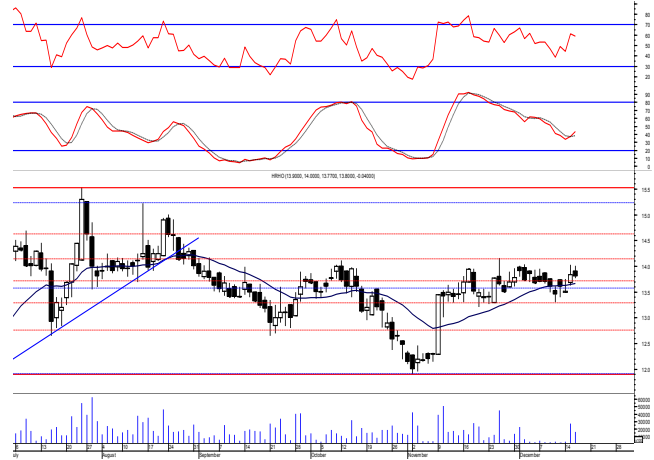
Prices traded quietly flat closing slightly negative. We still recommend to stay on cash and wait for a confirmed buy signal to react safely on.

Buyers will confirm their strength by only clearing the resistance level 14.10.

Any held positions should watch the mentioned support as it represents an important defensive line.

Support levels: 13.50, 12.65

Resistance levels: 14.10, 14.70



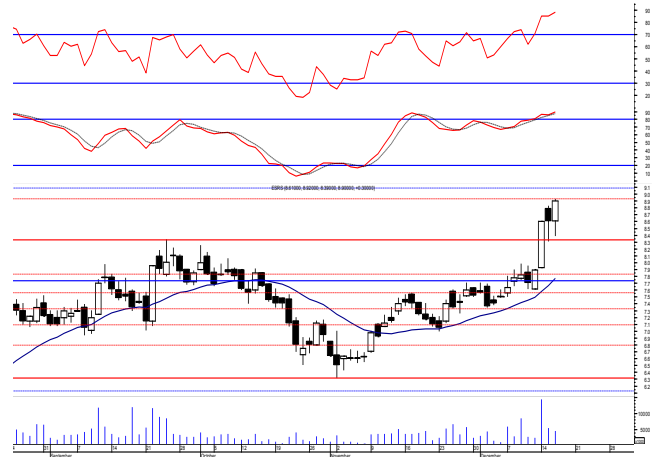
**El-Ezz steel rebar's' (ESRS.CA):**

Prices soared higher hitting our target level 8.90 and still may climb higher to the strong resistance level 9.10 where we should watch carefully. Trading partially on the mentioned levels is recommended bearing in mind that managing to clear 9.10 will set new targets.

Existing positions are advised to move their stops higher to maximize profits. Notice that protective stop should be placed below 8.30 as failure to defend will indicate that the breakout was false and that sellers are still in control.

Support levels: 8.30, 7.75-7.55

Resistance levels: 9.10, 9.80



**Disclaimer**

- This publication has been prepared by Blom Egypt Securities for information purposes only.
- It is not intended as an offer to buy or sell or a solicitation of an offer to buy or sell the securities mentioned.
- The information & opinions in this publication were prepared by Blom Egypt Securities research department accepts no liability or legal responsibility for losses & damages incurred arising from the use of this publication or its contents.

**Blom Egypt Securities**  
Samir M. Azmi, CFTe, CETA  
Senior Technical Analyst  
samir.azmi@blomsecurities.com



Most active Stocks

Daily Technical Analysis Report

17 Dec, 2020

Stock Name (Reuters' Code)	Close	Trend	T1	T2	Support	Resistance	SL	Triggers	
								Lower	Upper
<b>Building Materials &amp; Construction</b>									
Arabian cement (ARCC.CA)	3.16	Up-Corr.	—	—	3.15	3.40	3.05	—	—
El Ezz Steel Rebar's (ESRS.CA)	8.90	Bullish	8.90√	9.60	8.30	9.10	7.70	—	—
Egyptian iron & steel; Co. (IRON.CA)	3.39	Dn.-Corr.	—	—	3.35	3.50	2.80	—	—
GB auto (AUTO.CA)	3.04	Dn.-Corr.	—	—	2.95	3.12	2.80	—	—
Orascom construction (ORAS.CA)	84.00	Flat	—	—	—	—	81.00	81.00	85.50
South Valley Cement (SVCE.CA)	1.733	Up-Corr.	—	—	1.65	1.76	1.65	—	—
Elswedey Cables (SWDY.CA)	9.08	Bullish	8.95√	9.30√	8.50	9.30	7.75	—	—
Upper Egypt general contracting (UEGC.CA)	0.794	Up-Corr.	—	—	0.74	0.80	0.74	—	—
<b>Chemicals</b>									
Abu-Qir fertilizers (ABUK.CA)	20.51	Bullish	21.60√	22.80	20.50	21.60	19.20	—	—
Egyptian Financial & Indust. (EFIC.CA)	12.43	Dn.-Corr.	—	—	12.20	12.70	12.20	—	—
Egyptian chemical industries-Kima (EGCH.CA)	4.28	Up-Corr.	—	—	4.20	4.40	3.80	—	—
<b>Communications</b>									
Orascom investment holding (OIH.CA)	0.539	Up-Corr.	—	—	0.49	0.555	0.49	—	—
Telecom Egypt (EDEL.CA)	12.10	Up-Corr.	—	—	11.70	12.25	11.40	—	—
<b>Financial Services</b>									
Abu Dhabi International Bank (ADIB.CA)	11.73	Dn.-Corr.	—	—	11.20	12.00	11.20	—	—
Arabian for investments & development (AIH.CA)	0.669	Dn.-Corr.	—	—	0.645	0.71	0.59	—	—
Amer holding group (AMER.CA)	1.004	Dn.-Corr.	—	—	0.98	1.08	0.84	—	—
Commercial International Bank (COMI.CA)	62.10	Up-Corr.	—	—	60.00	63.00	60.00	—	—
Export development bank of Egypt (EXPA.CA)	16.25	Bullish	17.50√	19.30	15.90	17.50	14.35	—	—
<b>Holding Companies</b>									
CI capital holding for financial investments (CICH.CA)	3.94	Up-Corr.	—	—	3.75	4.00	3.55	—	—
Citadel capital (CCAP.CA)	1.452	Up-Corr.	—	—	1.45	1.53	1.39	—	—
Hermes Holding (HRHO.CA)	13.80	Up-Corr.	—	—	13.50	14.10	11.90	—	—
Kuwaiti Holding (EKHO.CA)	1.01	Up-Corr.	—	—	0.97	1.04	0.97	—	—
Pioneers holding (PIOH.CA)	3.95	Up-Corr.	—	—	3.85	4.15	3.70	—	—
<b>Housing &amp; Real Estate</b>									
Egyptian For Tourism Resorts (EGTS.CA)	1.481	Up-Corr.	—	—	1.41	1.52	1.30	—	—
Elshams housing (ELSH.CA)	4.77	Up-Corr.	—	—	4.60	5.05	4.15	—	—
Emaar holding (EMFD.CA)	2.41	Dn.-Corr.	—	—	2.40	2.55	2.13	—	—
Heliopolis housing & development (HELLI.CA)	6.05	Dn.-Corr.	—	—	5.90	6.40	5.90	—	—
Medinet Nasr for housing & Deve. (MNHD.CA)	3.77	Up-Corr.	—	—	3.60	3.90	3.45	—	—
6th. October Deve. Inv. (OCDI.CA)	14.90	Bullish	15.75	16.90	14.80	15.75	13.90	—	—
Palm hills development Co. (PHDC.CA)	1.37	Up-Corr.	—	—	1.33	1.40	1.28	—	—
Talaat Mustafa group holding (TMGH.CA)	6.50	Up-Corr.	—	—	6.50	6.80	6.30	—	—
<b>Mining &amp; Gas</b>									
Alexandria Mineral Oils Co. (AMOC.CA)	3.14	Bullish	3.15√	3.35√	3.15	3.35	2.60	—	—
Sidi Kerir Petrochemicals (SKPC.CA)	9.00	Up-Corr.	—	—	8.55	9.20	7.80	—	—
<b>Textiles &amp; Clothes</b>									
Arab Co. for asset management & Deve. (ACAMD.CA)	5.83	Dn.-Corr.	—	—	5.50	5.90	5.50	—	—
Arab cotton ginning (ACGC.CA)	3.07	Up-Corr.	—	—	3.05	3.25	2.40	—	—
Oriental Weavers (ORWE.CA)	7.10	Dn.-Corr.	—	—	7.00	7.50	7.00	—	—
<b>Other Sectors</b>									
Egyptian Media Production City (MPRC.CA)	6.33	Up-Corr.	—	—	6.10	6.55	5.40	—	—
Egyptian Transport - Egytrans (ETRS.CA)	10.20	Up-Corr.	—	—	10.10	11.00	9.10	—	—
Orascom holding development (ORHD.CA)	4.86	Bullish	5.35	5.90	4.85	5.35	4.35	—	—
United Arab Shipping (UASG.CA)	1.07	Up-Corr.	—	—	1.08	1.17	0.90	—	—

Disclaimer

- This publication has been prepared by Blom Egypt Securities for information purposes only.
- It is not intended as an offer to buy or sell or a solicitation of an offer to buy or sell the securities mentioned.
- The information & opinions in this publication were prepared by Blom Egypt Securities research department accepts no liability or legal responsibility for losses & damages incurred arising from the use of this publication or its contents.

**Blom Egypt Securities**  
Samir M. Azmi, CFTe, CETA  
Senior Technical Analyst  
samir.azmi@blomsecurities.com



### Guidelines for using BLOM daily Technical Analysis Report

<b><u>Close:</u></b>	Is recorded as the last trade in the session.
<b><u>Trend:</u></b>	
<b>Bullish :</b>	The strategy is to buy the dips.
<b>Bearish :</b>	The strategy is to sell the rallies.
<b>Flat :</b>	The strategy is to trade the range between the triggers.
<b>Up-Corr. :</b>	A move against the major trend when it is down.
<b>Dn.-Corr. :</b>	A move against the major trend when it is up.
<b><u>Targets :</u></b>	Take some profit by reducing a portion of the position whenever a price target is been hit.
<b><u>Support :</u></b>	A level below market price (previous lows) where buyers showed strength, in a bull market buy near the support and don't sell on the resistance. A break below the Support is considered to be a bearish sign.
<b><u>Resistance :</u></b>	A level above market price (previous highs) where sellers showed strength, in a bear market sell near the resistance level and don't buy on the support. A break above the resistance is considered to be a bullish sign.
<b><u>Stop Loss :</u></b>	Must exit the current position whenever the closing price is (1% to 2%) below the stop loss and confirmed by volume.
<b><u>Triggers :</u></b>	The range between the lower trigger and the upper is used for trading, break of any of them, the move would continue in the same direction.
<b><u>Yellow rows:</u></b>	indication that the stock closed below/above support, stop-loss, or resistance but the break is not confirmed yet.

#### Disclaimer

- This publication has been prepared by Blom Egypt Securities for information purposes only.
- It is not intended as an offer to buy or sell or a solicitation of an offer to buy or sell the securities mentioned.
- The information & opinions in this publication were prepared by Blom Egypt Securities research department accepts no liability or legal responsibility for losses & damages incurred arising from the use of this publication or its contents.

**Blom Egypt Securities**  
**Samir M. Azmi, CFTe, CETA**  
**Senior Technical Analyst**  
[samir.azmi@blomsecurities.com](mailto:samir.azmi@blomsecurities.com)