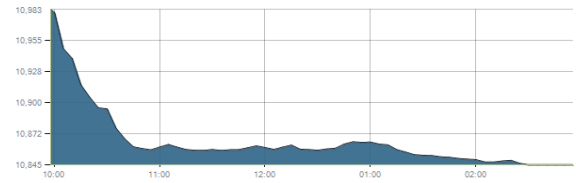




Indices intraday trends

EGX 30

مؤشر EGX 30
اليوم - 17/12/2020

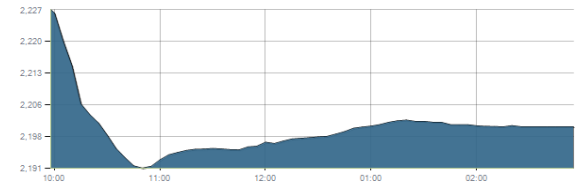


Key Levels

Support 1	10750	Resistance 1	10900-11100
Support 2	10550	Resistance 2	11500

EGX 50 EWI

مؤشر EGX 50 EWI
اليوم - 17/12/2020

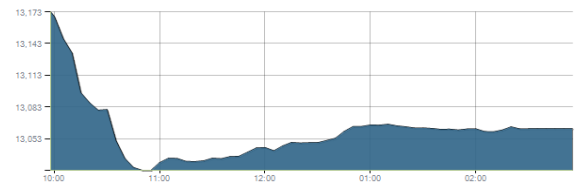


Key Levels

Close		2200.55	
Support 1	2200	Resistance 1	2300
Support 2	2130	Resistance 2	2400

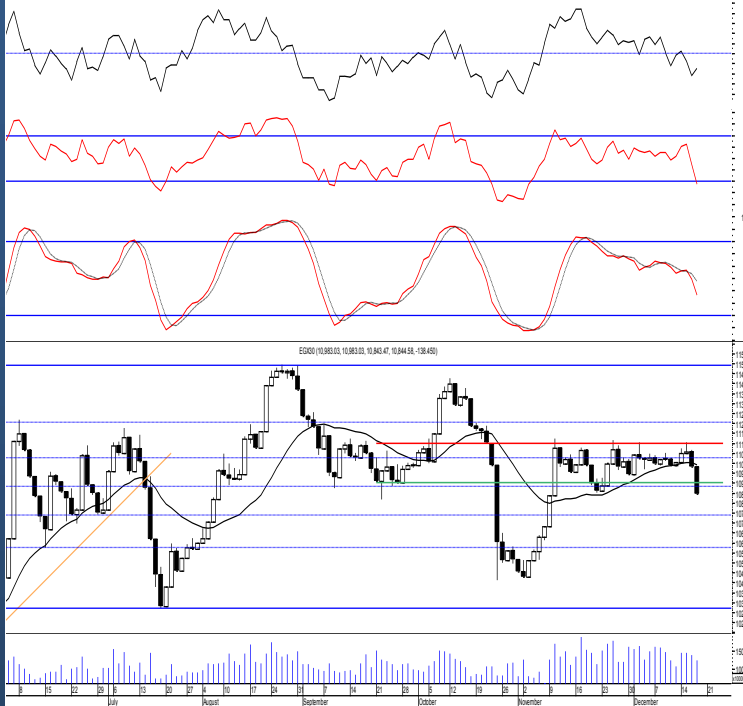
EGX 30 capped

مؤشر EGX 30 Capped
اليوم - 17/12/2020



Key Levels

Close		13062.36	
Support 1	13035	Resistance 1	13455
Support 2	12790	Resistance 2	13755



Market Commentary:

The EGX30 closed in red below the resistance zone 10900-11100 confirming that bears are still in control.

As we said, clearing the mentioned zone only will confirm the bull case, while being unable to clear or breaking below will keep bears in control.

Thus, we recommend to stay on cash till a confirmed buy signal is triggered.

Risk takers who decides holding their positons are advised to keep close stops placed and respected.

Close	10844.58	Trend	Up-Corr.
Pre. Close	10983.03	Target 1	---
Change	↓ 138.45 (1.26%)	Target 2	---
Day's range	10983.03 — 10843.47	Stop-loss	10425
52week's high	14831.20	52week's low	8113.82

Disclaimer

- This publication has been prepared by Blom Egypt Securities for information purposes only.
- It is not intended as an offer to buy or sell or a solicitation of an offer to buy or sell the securities mentioned.
- The information & opinions in this publication were prepared by Blom Egypt Securities research department accepts no liability or legal responsibility for losses & damages incurred arising from the use of this publication or its contents.

Blom Egypt Securities
Samir M. Azmi, CFTe, CETA
Senior Technical Analyst
samir.azmi@blomsecurities.com



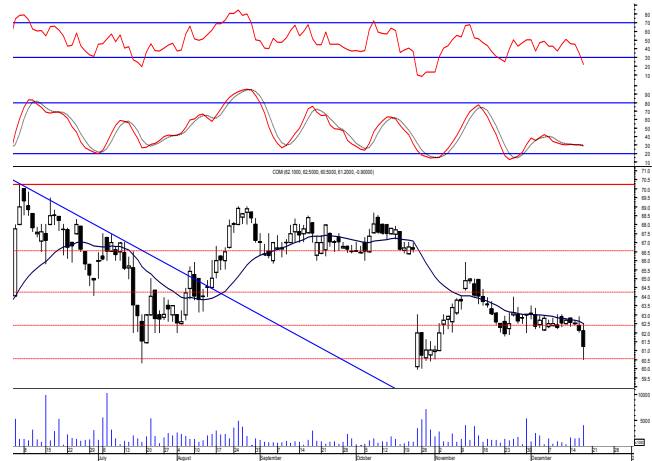
Commercial international bank (COMI.CA):

Prices closed in red nearer the session's low after choppy trading performance keeping levels unchanged and so for our outlook.

We still recommend traded positions to stay on cash and wait for a confirmed buy signal to react safely on.

While held positions are advised to activate their stops and stay on cash.

Support levels: 60.00, 58.50
Resistance levels: 63.00, 66.00



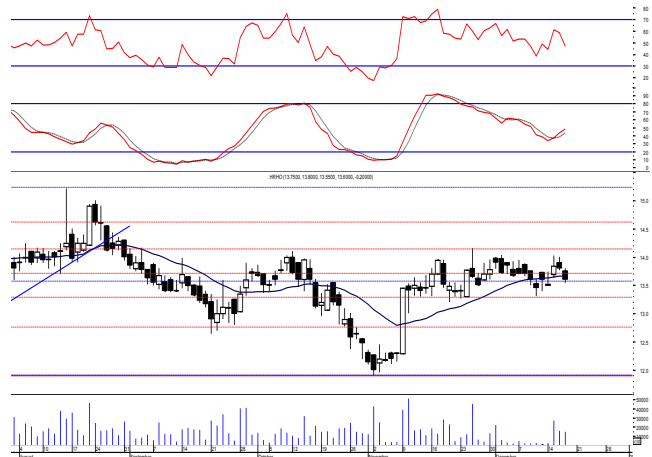
Hermes Holding (HRHO.CA):

Prices closed slightly negative after reaching back near the support level 13.50 leaving levels unchanged and so for our outlook. We still recommend to stay on cash and wait for a confirmed buy signal to react safely on.

Buyers will confirm their strength by only clearing the resistance level 14.10.

Any held positions should watch the mentioned support as it represents an important defensive line.

Support levels: 13.50, 12.65
Resistance levels: 14.10, 14.70

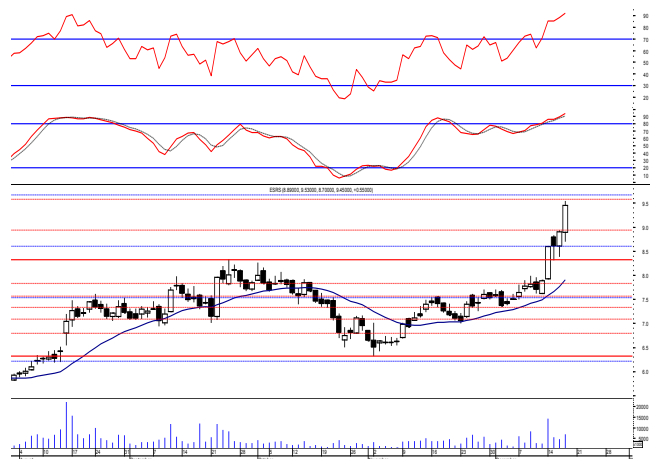


El-Ezz steel rebar's' (ESRS.CA):

Prices extended higher breaking the strong resistance level 9.10 turning it into support. Our coming target and resistance levels now is at 9.80 where we may continue trading partially on.

Existing positions are always advised to move their stops higher to maximize profits. Notice that protective stop should be placed below 8.30 as failure to defend will indicate that the breakout was false and that sellers are still in control.

Support levels: 9.10, 8.30
Resistance levels: 9.80, 10.90



Disclaimer

- This publication has been prepared by Blom Egypt Securities for information purposes only.
- It is not intended as an offer to buy or sell or a solicitation of an offer to buy or sell the securities mentioned.
- The information & opinions in this publication were prepared by Blom Egypt Securities research department accepts no liability or legal responsibility for losses & damages incurred arising from the use of this publication or its contents.

Blom Egypt Securities
Samir M. Azmi, CFTe, CETA
Senior Technical Analyst
samir.azmi@blomsecurities.com



Most active Stocks

Daily Technical Analysis Report

20 Dec, 2020

Stock Name (Reuters' Code)	Close	Trend	T1	T2	Support	Resistance	SL	Triggers	
								Lower	Upper
Building Materials & Construction									
Arabian cement (ARCC.CA)	3.40	Up-Corr.	—	—	3.15	3.40	3.05	—	—
El Ezz Steel Rebar's (ESRS.CA)	9.45	Bullish	8.90√	9.80	8.30	9.10	7.70	—	—
Egyptian iron & steel; Co. (IRON.CA)	3.41	Dn.-Corr.	—	—	3.35	3.50	2.80	—	—
GB auto (AUTO.CA)	3.12	Dn.-Corr.	—	—	2.95	3.12	2.80	—	—
Orascom construction (ORAS.CA)	82.50	Flat	—	—	—	—	81.00	81.00	85.50
South Valley Cement (SVCE.CA)	1.777	Up-Corr.	—	—	1.76	1.85	1.65	—	—
Elswedey Cables (SWDY.CA)	9.17	Bullish	8.95√	9.30√	8.50	9.30	7.75	—	—
Upper Egypt general contracting (UEGC.CA)	0.804	Up-Corr.	—	—	0.74	0.80	0.74	—	—
Chemicals									
Abu-Qir fertilizers (ABUK.CA)	20.80	Bullish	21.60√	22.80	20.50	21.60	19.20	—	—
Egyptian Financial & Indust. (EFIC.CA)	12.30	Dn.-Corr.	—	—	12.20	12.70	12.20	—	—
Egyptian chemical industries-Kima (EGCH.CA)	4.26	Up-Corr.	—	—	4.20	4.40	3.80	—	—
Communications									
Orascom investment holding (OIH.CA)	0.542	Up-Corr.	—	—	0.49	0.555	0.49	—	—
Telecom Egypt (ETEL.CA)	12.07	Up-Corr.	—	—	11.70	12.25	11.40	—	—
Financial Services									
Abu Dhabi International Bank (ADIB.CA)	12.00	Dn.-Corr.	—	—	11.20	12.00	11.20	—	—
Arabian for investments & development (AIH.CA)	0.66	Dn.-Corr.	—	—	0.645	0.71	0.59	—	—
Amer holding group (AMER.CA)	1.075	Dn.-Corr.	—	—	0.98	1.08	0.84	—	—
Commercial International Bank (COMI.CA)	61.20	Up-Corr.	—	—	60.00	63.00	60.00	—	—
Export development bank of Egypt (EXPA.CA)	15.61	Dn.-Corr.	—	—	15.00	15.90	14.35	—	—
Holding Companies									
CI capital holding for financial investments (CICH.CA)	3.91	Up-Corr.	—	—	3.75	4.00	3.55	—	—
Citadel capital (CCAP.CA)	1.49	Up-Corr.	—	—	1.45	1.53	1.39	—	—
Hermes Holding (HRHO.CA)	13.60	Up-Corr.	—	—	13.50	14.10	11.90	—	—
Kuwaiti Holding (EKHO.CA)	1.01	Up-Corr.	—	—	0.97	1.04	0.97	—	—
Pioneers holding (PIOH.CA)	3.83	Up-Corr.	—	—	2.70	3.85	3.70	—	—
Housing & Real Estate									
Egyptian For Tourism Resorts (EGTS.CA)	1.49	Up-Corr.	—	—	1.41	1.52	1.30	—	—
Elshams housing (ELSH.CA)	4.80	Up-Corr.	—	—	4.60	5.05	4.15	—	—
Emaar holding (EMFD.CA)	2.44	Dn.-Corr.	—	—	2.40	2.55	2.13	—	—
Heliopolis housing & development (HELLI.CA)	6.14	Dn.-Corr.	—	—	5.90	6.40	5.90	—	—
Medinet Nasr for housing & Deve. (MNHD.CA)	3.82	Up-Corr.	—	—	3.60	3.90	3.45	—	—
6th. October Deve. Inv. (OCDI.CA)	14.71	Bullish	15.75	16.90	14.80	15.75	13.90	—	—
Palm hills development Co. (PHDC.CA)	1.379	Up-Corr.	—	—	1.33	1.40	1.28	—	—
Talaat Mustafa group holding (TMGH.CA)	6.50	Up-Corr.	—	—	6.50	6.80	6.30	—	—
Mining & Gas									
Alexandria Mineral Oils Co. (AMOC.CA)	3.16	Bullish	3.15√	3.35√	3.15	3.35	2.60	—	—
Sidi Kerir Petrochemicals (SKPC.CA)	9.13	Up-Corr.	—	—	8.55	9.20	7.80	—	—
Textiles & Clothes									
Arab Co. for asset management & Deve. (ACAMD.CA)	5.61	Dn.-Corr.	—	—	5.50	5.90	5.50	—	—
Arab cotton ginning (ACGC.CA)	3.13	Up-Corr.	—	—	3.05	3.25	2.40	—	—
Oriental Weavers (ORWE.CA)	7.06	Dn.-Corr.	—	—	7.00	7.50	7.00	—	—
Other Sectors									
Egyptian Media Production City (MPRC.CA)	6.40	Up-Corr.	—	—	6.10	6.55	5.40	—	—
Egyptian Transport - Egytrans (ETRS.CA)	10.00	Up-Corr.	—	—	10.10	11.00	9.10	—	—
Orascom holding development (ORHD.CA)	4.88	Bullish	5.35	5.90	4.85	5.35	4.35	—	—
United Arab Shipping (UASG.CA)	1.104	Up-Corr.	—	—	1.08	1.17	0.90	—	—

Disclaimer

- This publication has been prepared by Blom Egypt Securities for information purposes only.
- It is not intended as an offer to buy or sell or a solicitation of an offer to buy or sell the securities mentioned.
- The information & opinions in this publication were prepared by Blom Egypt Securities research department accepts no liability or legal responsibility for losses & damages incurred arising from the use of this publication or its contents.

Blom Egypt Securities
Samir M. Azmi, CFTe, CETA
Senior Technical Analyst
samir.azmi@blomsecurities.com



Guidelines for using BLOM daily Technical Analysis Report

<u>Close:</u>	Is recorded as the last trade in the session.
<u>Trend:</u>	
Bullish :	The strategy is to buy the dips.
Bearish :	The strategy is to sell the rallies.
Flat :	The strategy is to trade the range between the triggers.
Up-Corr. :	A move against the major trend when it is down.
Dn.-Corr. :	A move against the major trend when it is up.
<u>Targets :</u>	Take some profit by reducing a portion of the position whenever a price target is been hit.
<u>Support :</u>	A level below market price (previous lows) where buyers showed strength, in a bull market buy near the support and don't sell on the resistance. A break below the Support is considered to be a bearish sign.
<u>Resistance :</u>	A level above market price (previous highs) where sellers showed strength, in a bear market sell near the resistance level and don't buy on the support. A break above the resistance is considered to be a bullish sign.
<u>Stop Loss :</u>	Must exit the current position whenever the closing price is (1% to 2%) below the stop loss and confirmed by volume.
<u>Triggers :</u>	The range between the lower trigger and the upper is used for trading, break of any of them, the move would continue in the same direction.
<u>Yellow rows:</u>	indication that the stock closed below/above support, stop-loss, or resistance but the break is not confirmed yet.

Disclaimer

- This publication has been prepared by Blom Egypt Securities for information purposes only.
- It is not intended as an offer to buy or sell or a solicitation of an offer to buy or sell the securities mentioned.
- The information & opinions in this publication were prepared by Blom Egypt Securities research department accepts no liability or legal responsibility for losses & damages incurred arising from the use of this publication or its contents.

Blom Egypt Securities
Samir M. Azmi, CFTe, CETA
Senior Technical Analyst
samir.azmi@blomsecurities.com