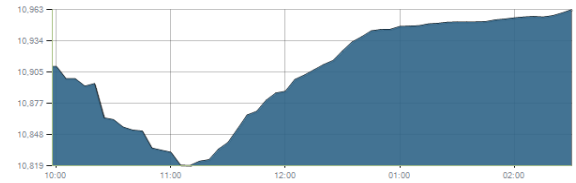




Indices intraday trends

EGX 30

مؤشر EGX 30
اليوم - 22/09/2020

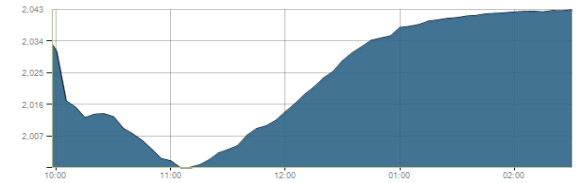


Key Levels

Support 1	11100-10900	Resistance 1	12000-12100
Support 2	10700	Resistance 2	12500

EGX 50 EWI

مؤشر EGX 50 EWI
اليوم - 22/09/2020

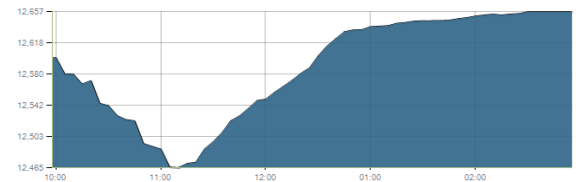


Key Levels

Close		2043.10	
Support 1	1945	Resistance 1	2055
Support 2	1870	Resistance 2	2130

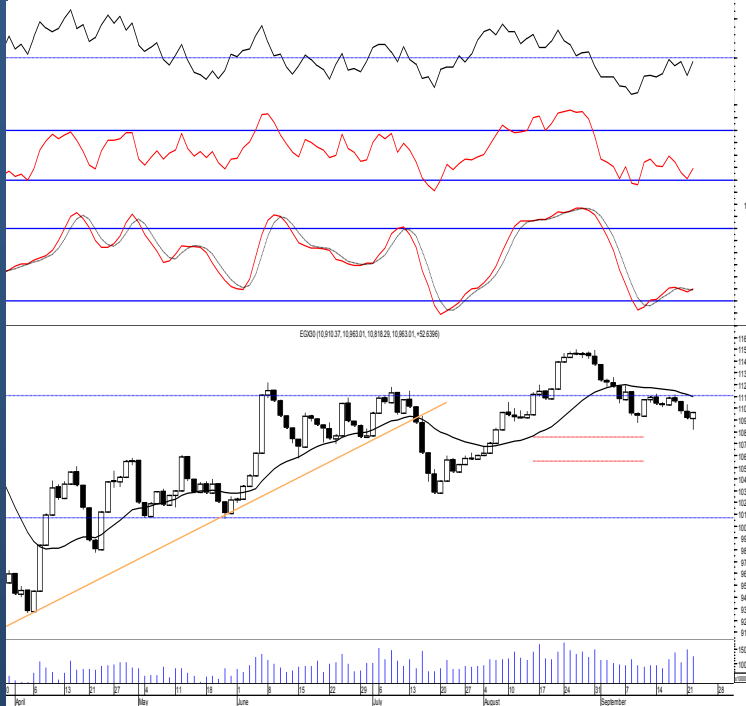
EGX 30 capped

مؤشر EGX 30 Capped
اليوم - 22/09/2020



Key Levels

Close		12656.66	
Support 1	12320	Resistance 1	13050
Support 2	12100	Resistance 2	13500



Market Commentary:

The EGX30 dived lower trading below the mentioned support zone before rebounding process takes place pushing the index back above closing in green. The rebounding process was fueled by increasing volumes indicating buyer's strength suggesting further climbing. Short term trend is up as long as buyers manages to defend the mentioned support zone and we still expect containing the recent profit taking process and continue higher to the 2nd target level 11800 where we recommend to trade partially on. Bear in mind that the coming resistance zone will likely be reached where we may continue trading on. Held positions should keep close protective stops to maximize profits.

Close	10963.01	Trend	Bullish
Pre. Close	10910.37	Target 1	11500
Change	↑ 52.64 (0.48%)	Target 2	11800
Day's range	10818.29 — 10963.01	Stop-loss	10000
52week's high	15127.26	52week's low	8113.82

Disclaimer

- This publication has been prepared by Blom Egypt Securities for information purposes only.
- It is not intended as an offer to buy or sell or a solicitation of an offer to buy or sell the securities mentioned.
- The information & opinions in this publication were prepared by Blom Egypt Securities research department accepts no liability or legal responsibility for losses & damages incurred arising from the use of this publication or its contents.

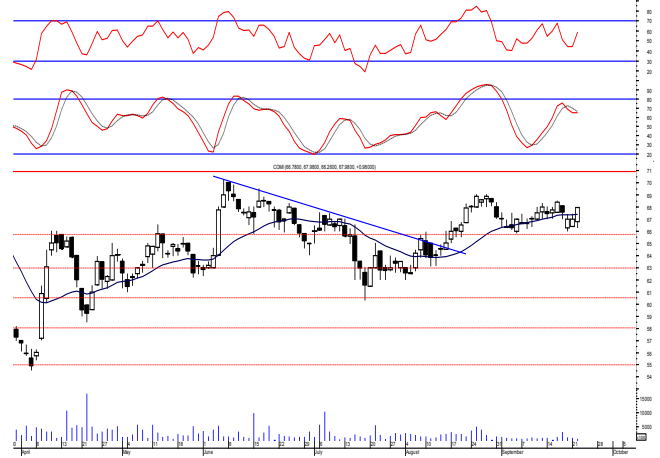
Blom Egypt Securities
Samir M. Azmi, CFTe, CETA
Senior Technical Analyst
samir.azmi@blomsecurities.com



Commercial international bank (COMI.CA):

Prices soared higher managing to close above the support level 67.50 keeping levels the same. Yet, bull's still have the near term technical advantage as long as sustaining the support level 66.00 in which we believe that falling near will represent a good buying opportunity. Overall, we still expect reaching the second level 69.50 where we may trade partially on bearing in mind that the rally have the strong potential to continue to the resistance level 71.00.

Support levels: 67.50, 66.00
Resistance levels: 69.50, 71.00

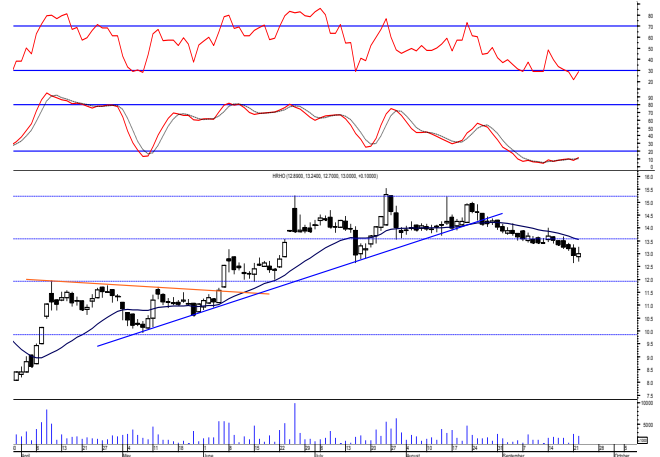


Hermes Holding (HRHO.CA):

Prices witnessed an upward move after successfully testing our support level 12.65 boosted by increasing trading volumes suggesting further climbing which will likely reach the resistance level 13.50.

As we said, we recommend to stay on cash and wait for a confirmed buy signal to react safely on. Any held positions should watch the mentioned support as it represents an important defensive line.

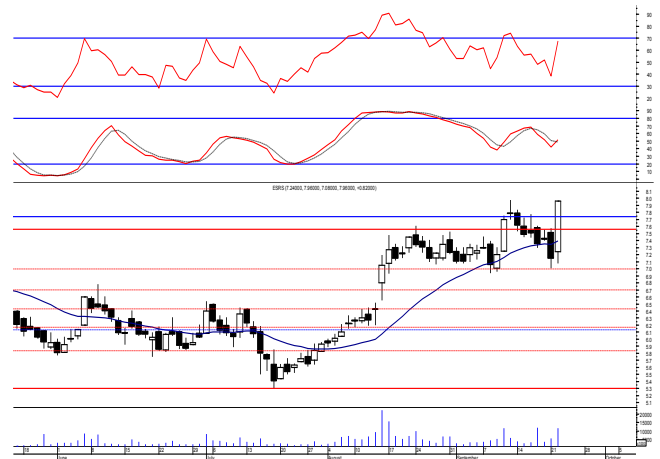
Support levels: 12.65, 11.90
Resistance levels: 13.50, 14.00



El-Ezz steel rebar's' (ESRS.CA):

Prices rallied sharply managing to clear the resistance zone 7.55-7.75 turning it into support. The rally was fueled by increasing trading volume which as we said still suggests further climbing. New targets are set at 8.25 & 9.00 where we may safely use the range and trade gradually on the targets. Always keep close stop levels placed and respected to protect the downside.

Support levels: 7.75-7.55, 7.00
Resistance levels: 8.25, 9.00



Disclaimer

- This publication has been prepared by Blom Egypt Securities for information purposes only.
- It is not intended as an offer to buy or sell or a solicitation of an offer to buy or sell the securities mentioned.
- The information & opinions in this publication were prepared by Blom Egypt Securities research department accepts no liability or legal responsibility for losses & damages incurred arising from the use of this publication or its contents.

Blom Egypt Securities
Samir M. Azmi, CFTe, CETA
Senior Technical Analyst
samir.azmi@blomsecurities.com



Most active Stocks

Daily Technical Analysis Report

23 Sep, 2020

Stock Name (Reuters' Code)	Close	Trend	T1	T2	Support	Resistance	SL	Triggers	
								Lower	Upper
Building Materials & Construction									
Arabian cement (ARCC.CA)	3.6	Dn.-Corr.	—	—	3.40	3.60	3.40	—	—
El Ezz Steel Rebar's (ESRS.CA)	7.96	Bullish	8.25	9.00	7.55	8.25	7.00	—	—
Egyptian iron & steel; Co. (IRON.CA)	3.35	Up-Corr.	—	—	3.10	3.50	2.45	—	—
GB auto (AUTO.CA)	2.57	Dn.-Corr.	—	—	2.40	2.60	2.40	—	—
Orascom construction (ORAS.CA)	71.10	Dn.-Corr.	—	—	69.50	73.00	65.00	—	—
South Valley Cement (SVCE.CA)	2.00	Dn.-Corr.	—	—	1.95	2.20	1.65	—	—
Elswedey Cables (SWDY.CA)	6.96	Up-Corr.	—	—	6.90	7.30	6.65	—	—
Upper Egypt general contracting (UEGC.CA)	0.845	Dn.-Corr.	—	—	0.809	0.855	0.66	—	—
Chemicals									
Abu-Qir fertilizers (ABUK.CA)	20.00	Bullish	21.00	22.10	19.20	21.00	17.05	—	—
Egyptian Financial & Indust. (EFIC.CA)	10.85	Bullish	11.40	12.00	10.60	11.40	9.80	—	—
Egyptian chemical industries-Kima (EGCH.CA)	4.47	Bullish	4.85	5.25	4.40	4.85	3.85	—	—
Communications									
Orascom investment holding (OIH.CA)	0.536	Dn.-Corr.	—	—	0.52	0.55	0.46	—	—
Telecom Egypt (ETEL.CA)	11.85	Bearish	—	—	11.50	12.20	—	—	—
Financial Services									
Abu Dhabi International Bank (ADIB.CA)	10.91	Dn.-Corr.	—	—	10.40	11.50	10.00	—	—
Arabian for investments & development (AIH.CA)	0.49	Dn.-Corr.	—	—	0.475	0.50	0.43	—	—
Amer holding group (AMER.CA)	0.685	Dn.-Corr.	—	—	0.68	0.75	0.62	—	—
Commercial International Bank (COMI.CA)	67.98	Dn.-Corr.	—	—	67.50	69.50	58.45	—	—
Export development bank of Egypt (EXPA.CA)	10.70	Dn.-Corr.	—	—	10.70	11.60	10.70	—	—
Holding Companies									
CI capital holding for financial investments (CICH.CA)	3.51	Up-Corr.	—	—	3.40	3.55	3.40	—	—
Citadel capital (CCAP.CA)	1.535	Bearish	—	—	1.46	1.60	—	—	—
Hermes Holding (HRHO.CA)	13.00	Bearish	—	—	12.65	13.50	—	—	—
Kuwaiti Holding (EKHO.CA)	1.081	Dn.-Corr.	—	—	1.04	1.09	0.97	—	—
Pioneers holding (PIOH.CA)	3.98	Up-Corr.	—	—	3.85	4.15	3.70	—	—
Housing & Real Estate									
Egyptian For Tourism Resorts (EGTS.CA)	1.37	Dn.-Corr.	—	—	1.30	1.43	1.30	—	—
Elshams housing (ELSH.CA)	4.14	Dn.-Corr.	—	—	3.85	4.10	3.85	—	—
Emaar holding (EMFD.CA)	2.44	Up-Corr.	—	—	2.30	2.50	2.13	—	—
Heliopolis housing & development (HELL.CA)	5.80	Dn.-Corr.	—	—	5.60	6.15	5.60	—	—
Medinet Nasr for housing & Deve. (MNHD.CA)	3.03	Dn.-Corr.	—	—	3.00	3.20	2.75	—	—
6th. October Deve. Inv. (OCDI.CA)	12.02	Dn.-Corr.	—	—	11.90	12.30	10.25	—	—
Palm hills development Co. (PHDC.CA)	1.382	Dn.-Corr.	—	—	1.25	1.43	1.25	—	—
Talaat Mustafa group holding (TMGH.CA)	6.31	Dn.-Corr.	—	—	5.95	6.30	5.50	—	—
Mining & Gas									
Alexandria Mineral Oils Co. (AMOC.CA)	2.79	Dn.-Corr.	—	—	2.60	2.95	2.45	—	—
Sidi Kerir Petrochemicals (SKPC.CA)	8.86	Bullish	9.10	9.80	8.10	9.10	7.20	—	—
Textiles & Clothes									
Arab Co. for asset management & Deve. (ACAMD.CA)	4.96	Dn.-Corr.	—	—	4.75	5.00	4.50	—	—
Arab cotton ginning (ACGC.CA)	3.38	Dn.-Corr.	—	—	3.17	3.45	3.17	—	—
Oriental Weavers (ORWE.CA)	5.40	Dn.-Corr.	—	—	5.15	5.55	4.75	—	—
Other Sectors									
Egyptian Media Production City (MPC.CA)	6.57	Bullish	7.00	8.00	6.10	7.00	5.80	—	—
Egyptian Transport - Egytrans (ETRS.CA)	9.03	Bullish	8.75√	9.35√	8.10	9.35	7.10	—	—
Orascom holding development (ORHD.CA)	4.02	Up-Corr.	—	—	4.07	4.30	4.07	—	—
United Arab Shipping (UASG.CA)	1.243	Bullish	1.23√	1.32	1.20	1.32	1.07	—	—

Disclaimer

- This publication has been prepared by Blom Egypt Securities for information purposes only.
- It is not intended as an offer to buy or sell or a solicitation of an offer to buy or sell the securities mentioned.
- The information & opinions in this publication were prepared by Blom Egypt Securities research department accepts no liability or legal responsibility for losses & damages incurred arising from the use of this publication or its contents.

Blom Egypt Securities
Samir M. Azmi, CFTe, CETA
Senior Technical Analyst
samir.azmi@blomsecurities.com



Guidelines for using BLOM daily Technical Analysis Report

<u>Close:</u>	Is recorded as the last trade in the session.
<u>Trend:</u>	
Bullish :	The strategy is to buy the dips.
Bearish :	The strategy is to sell the rallies.
Flat :	The strategy is to trade the range between the triggers.
Up-Corr. :	A move against the major trend when it is down.
Dn.-Corr. :	A move against the major trend when it is up.
<u>Targets :</u>	Take some profit by reducing a portion of the position whenever a price target is been hit.
<u>Support :</u>	A level below market price (previous lows) where buyers showed strength, in a bull market buy near the support and don't sell on the resistance. A break below the Support is considered to be a bearish sign.
<u>Resistance :</u>	A level above market price (previous highs) where sellers showed strength, in a bear market sell near the resistance level and don't buy on the support. A break above the resistance is considered to be a bullish sign.
<u>Stop Loss :</u>	Must exit the current position whenever the closing price is (1% to 2%) below the stop loss and confirmed by volume.
<u>Triggers :</u>	The range between the lower trigger and the upper is used for trading, break of any of them, the move would continue in the same direction.
<u>Yellow rows:</u>	indication that the stock closed below/above support, stop-loss, or resistance but the break is not confirmed yet.

Disclaimer

- This publication has been prepared by Blom Egypt Securities for information purposes only.
- It is not intended as an offer to buy or sell or a solicitation of an offer to buy or sell the securities mentioned.
- The information & opinions in this publication were prepared by Blom Egypt Securities research department accepts no liability or legal responsibility for losses & damages incurred arising from the use of this publication or its contents.

Blom Egypt Securities
Samir M. Azmi, CFTe, CETA
Senior Technical Analyst
samir.azmi@blomsecurities.com