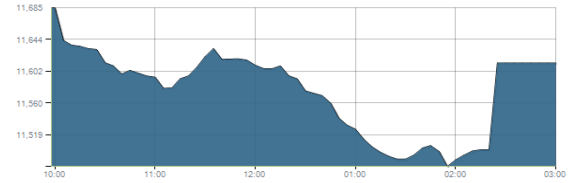




Indices intraday trends

EGX 30

مؤشر EGX 30  
اليوم - 04/11/2021

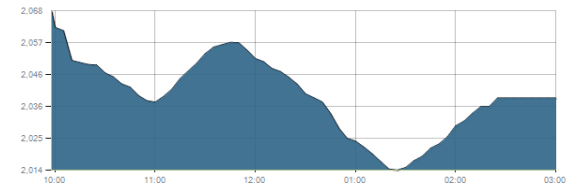


Key Levels

Support 1	11320-11200	Resistance 1	11675
Support 2	11100	Resistance 2	12250

EGX 50 EWI

مؤشر EGX 50 EWI  
اليوم - 04/11/2021

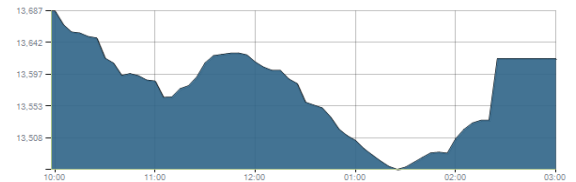


Key Levels

Close		2038.38	
Support 1	1970	Resistance 1	2060
Support 2	1890	Resistance 2	2120

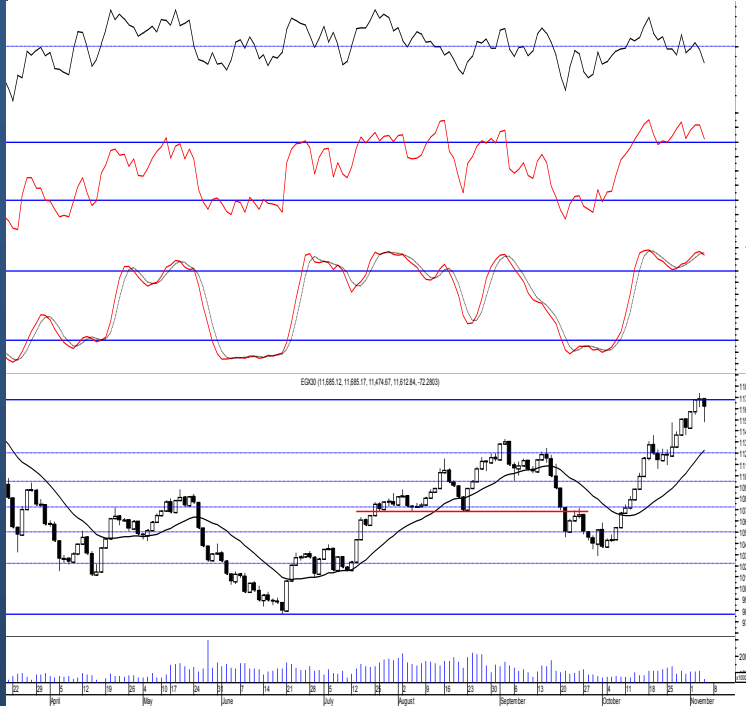
EGX 30 capped

مؤشر EGX 30 Capped  
اليوم - 04/11/2021



Key Levels

Close		13619.56	
Support 1	13470	Resistance 1	13820
Support 2	13330	Resistance 2	14100



Market Commentary:

The EGX30 kept fluctuating around our major resistance level 11675 closing slightly above. Trading volumes are still increasing which as we said suggests further climbing clearing our mentioned level but confirmation is still needed so we highly recommend to watch carefully. Trading should be very selective and conservative keeping close stops placed and respected to reduce market risk. Notice that the mentioned support zone should be respected in any decline as any violation to it will indicate that the previous breakout was false and yet further decline will follow.

Close	11612.84	Trend	Dn.-Corr.
Pre. Close	11676.38	Target 1	---
Change	↓ 72.28 ( 0.62% )	Target 2	---
Day's range	11685.17 — 11474.67	Stop-loss	10680
52week's high	11675.69	52week's low	9769.18.18

Disclaimer

- This publication has been prepared by Blom Egypt Securities for information purposes only.
- It is not intended as an offer to buy or sell or a solicitation of an offer to buy or sell the securities mentioned.
- The information & opinions in this publication were prepared by Blom Egypt Securities research department accepts no liability or legal responsibility for losses & damages incurred arising from the use of this publication or its contents.

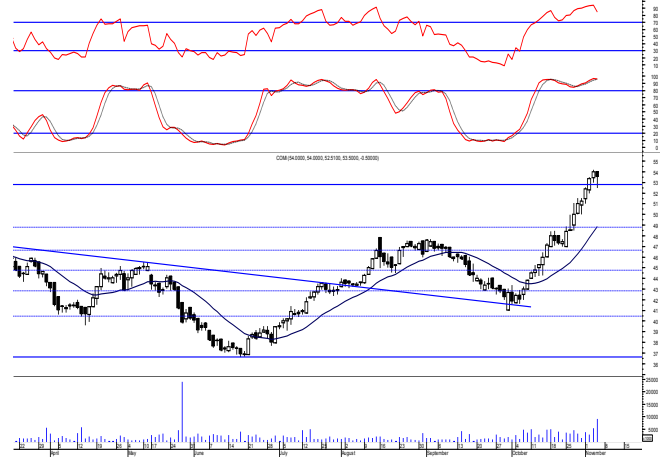
**Blom Egypt Securities**  
Samir M. Azmi, CFTe, CETA  
Senior Technical Analyst  
samir.azmi@blomsecurities.com



**Commercial international bank (COMI.CA):**

Prices remained in bullish mode after being able to successfully test the important support level 52.80 and rebounded from closing near the high keeping our outlook unchanged. As we said, by managing to close for the 2nd day the breakout is confirmed for both parties risk takers and conservatives and therefore our target is 57.70 where we can safely trade on keeping our stop below 52.80.

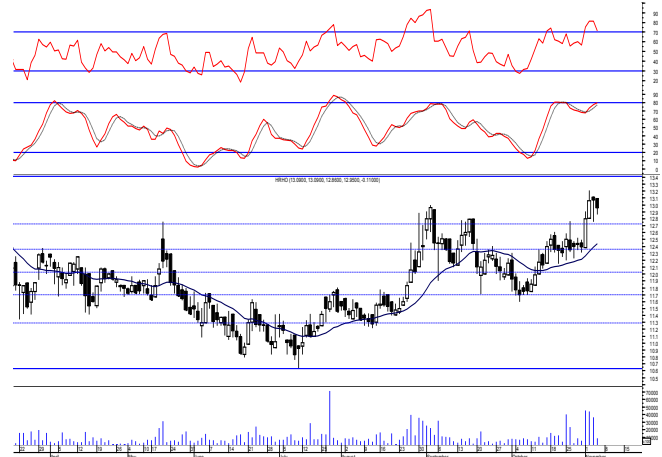
Support levels: 52.80, 51.60  
Resistance levels: 57.70, 60.00



**Hermes Holding (HRHO.CA):**

Prices witnessed a downward move due to selling pressure took place dominated but yet remained within the same range leaving everything in place. Existing positions are advised to hold keeping stops placed and respected below 12.10 as any decline below will give back the hand to selling party.

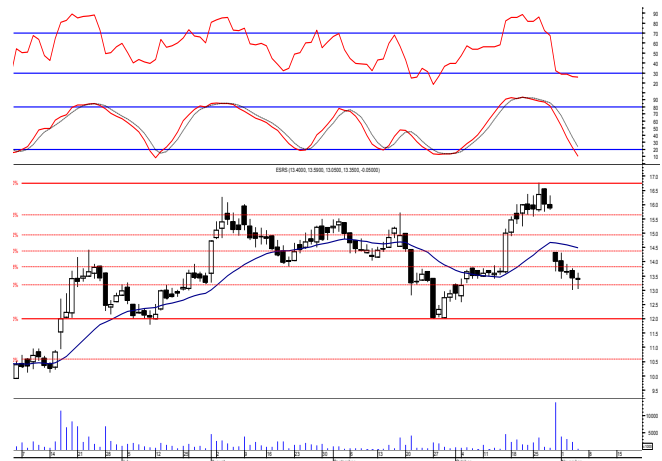
Support levels: (12-75-12.60), 12.10  
Resistance levels: 13.40, 14.25



**El-Ezz steel rebar's' (ESRS.CA):**

Prices retested the important support level 13.20 managing to rebound from closing slightly negative keeping everything in place. Intraday positive signals are evident suggesting possible same day trade where we believe that an upward move will likely reach back near 13.80. Current levels should be watched carefully as managing to confirm closing above the mentioned level will represent a trigger for further climbing where we may safely use for quick trading

Support levels: 13.80, 13.20  
Resistance levels: 14.50, 15.20



**Disclaimer**

- This publication has been prepared by Blom Egypt Securities for information purposes only.
- It is not intended as an offer to buy or sell or a solicitation of an offer to buy or sell the securities mentioned.
- The information & opinions in this publication were prepared by Blom Egypt Securities research department accepts no liability or legal responsibility for losses & damages incurred arising from the use of this publication or its contents.

**Blom Egypt Securities**  
**Samir M. Azmi, CFTe, CETA**  
**Senior Technical Analyst**  
**samir.azmi@blomsecurities.com**



Most active Stocks

Daily Technical Analysis Report

7 Nov, 2021

Stock Name (Reuters' Code)	Close	Trend	T1	T2	Support	Resistance	SL	Triggers	
								Lower	Upper
<b>Building Materials &amp; Construction</b>									
Arabian cement (ARCC.CA)	3.76	Up-Corr.	—	—	3.75	4.10	3.20	—	—
El Ezz Steel Rebar's (ESRS.CA)	13.35	Dn.-Corr.	—	—	13.20	13.80	13.20	—	—
GB auto (AUTO.CA)	4.40	Dn.-Corr.	—	—	4.10	4.50	3.75	—	—
Orascom construction (ORAS.CA)	70.56	Dn.-Corr.	—	—	68.50	71.70	68.50	—	—
South Valley Cement (SVCE.CA)	1.452	Bearish	—	—	1.324	1.50	—	—	—
Elsweddy Cables (SWDY.CA)	8.34	UP-Corr.	—	—	8.35	8.85	7.90	—	—
Upper Egypt general contracting (UEGC.CA)	0.638	Up-Corr.	—	—	0.614	0.65	0.57	—	—
<b>Chemicals</b>									
Abu-Qir fertilizers (ABUK.CA)	19.26	Dn.-Corr.	—	—	19.20	19.90	19.20	—	—
Egyptian Financial & Indust. (EFIC.CA)	12.04	Bearish	—	—	11.85	12.15	—	—	—
Egyptian chemical industries-Kima (EGCH.CA)	3.25	Bearish	—	—	3.00	3.35	—	—	—
<b>Communications</b>									
Fawry for banking tech. & electronic payment (FWRY.CA)	14.85	Up-Corr.	—	—	13.30	14.90	14.90	—	—
Orascom investment holding (OIH.CA)	0.248	Dn.-Corr.	—	—	0.248	0.268	0.215	—	—
Telecom Egypt (ETEL.CA)	13.84	Dn.-Corr.	—	—	13.80	14.30	12.90	—	—
<b>Financial Services</b>									
Abu Dhabi International Bank (ADIB.CA)	13.53	Up-Corr.	—	—	12.60	14.15	12.60	—	—
Arabian for investments & development (AIH.CA)	0.355	Bearish	—	—	0.31	0.37	—	—	—
Amer holding group (AMER.CA)	1.04	Dn.-Corr.	—	—	1.02	1.14	0.96	—	—
Commercial International Bank (COMI.CA)	53.50	Bullish	57.70√	60.00	52.80	57.70	46.60	—	—
Export development bank of Egypt (EXPA.CA)	9.18	Up-Corr.	—	—	9.15	10.10	9.15	—	—
<b>Holding Companies</b>									
Citadel capital (CCAP.CA)	1.272	Up-Corr.	—	—	1.24	1.305	1.09	—	—
Hermes Holding (HRHO.CA)	12.95	Dn.-Corr.	—	—	12.60	13.40	11.25	—	—
Kuwaiti Holding (EKHO.CA)	1.365	Bullish	1.23√	1.39√	1.23	1.39	1.11	—	—
MM group for industry & international trade (MTIE.CA)	6.12	Bearish	—	—	5.90	6.20	—	—	—
Orascom financial holding (OFH.CA)	0.228	Bearish	—	—	0.195	0.23	—	—	—
<b>Housing &amp; Real Estate</b>									
Egyptian For Tourism Resorts (EGTS.CA)	1.40	Bearish	—	—	1.21	1.47	—	—	—
Elshams housing (ELSH.CA)	5.84	Bearish	—	—	5.20	6.05	—	—	—
Emaar holding (EMFD.CA)	2.46	Dn.-Corr.	—	—	2.38	2.52	2.28	—	—
Heliopolis housing & development (HELL.CA)	4.22	Bearish	—	—	4.10	4.60	—	—	—
Medinet Nasr for housing & Deve. (MNHD.CA)	2.23	Up-Corr.	—	—	2.16	2.27	2.16	—	—
6th. October Deve. Inv. (OCDI.CA)	18.48	Flat	—	—	—	—	16.90	17.90	19.25
Palm hills development Co. (PHDC.CA)	1.92	Dn.-Corr.	—	—	1.90	1.96	1.73	—	—
Talaat Mustafa group holding (TMGH.CA)	7.63	Dn.-Corr.	—	—	7.50	7.90	6.90	—	—
<b>Mining &amp; Gas</b>									
Alexandria Mineral Oils Co. (AMOC.CA)	4.30	Bullish	4.40√	4.80	4.00	4.40	3.55	—	—
Sidi Kerir Petrochemicals (SKPC.CA)	7.41	Up-Corr.	—	—	7.20	7.75	7.20	—	—
<b>Textiles &amp; Clothes</b>									
Arab Co. for asset management & Deve. (ACAMD.CA)	0.447	Bearish	—	—	0.43	0.502	—	—	—
Arab cotton ginning (ACGC.CA)	1.65	Up-Corr.	—	—	1.62	1.778	1.455	—	—
Oriental Weavers (ORWE.CA)	8.30	Dn.-Corr.	—	—	8.05	8.55	7.50	—	—
<b>Other Sectors</b>									
Egyptian Media Production City (MPRC.CA)	4.88	Up-Corr.	—	—	4.75	5.10	4.40	—	—
Egyptian Transport - Egytrans (ETRS.CA)	13.45	Up-Corr.	—	—	12.50	13.60	12.50	—	—
Orascom holding development (ORHD.CA)	5.60	Up-Corr.	—	—	5.55	5.80	4.64	—	—
United Arab Shipping (UASG.CA)	0.86	Bearish	—	—	0.80	0.945	—	—	—

Disclaimer

- This publication has been prepared by Blom Egypt Securities for information purposes only.
- It is not intended as an offer to buy or sell or a solicitation of an offer to buy or sell the securities mentioned.
- The information & opinions in this publication were prepared by Blom Egypt Securities research department accepts no liability or legal responsibility for losses & damages incurred arising from the use of this publication or its contents.

**Blom Egypt Securities**  
**Samir M. Azmi, CFTe, CETA**  
 Senior Technical Analyst  
[samir.azmi@blomsecurities.com](mailto:samir.azmi@blomsecurities.com)



### Guidelines for using BLOM daily Technical Analysis Report

<b><u>Close:</u></b>	Is recorded as the last trade in the session.
<b><u>Trend:</u></b>	
<b>Bullish :</b>	The strategy is to buy the dips.
<b>Bearish :</b>	The strategy is to sell the rallies.
<b>Flat :</b>	The strategy is to trade the range between the triggers.
<b>Up-Corr. :</b>	A move against the major trend when it is down.
<b>Dn.-Corr. :</b>	A move against the major trend when it is up.
<b><u>Targets :</u></b>	Take some profit by reducing a portion of the position whenever a price target is been hit.
<b><u>Support :</u></b>	A level below market price (previous lows) where buyers showed strength, in a bull market buy near the support and don't sell on the resistance. A break below the Support is considered to be a bearish sign.
<b><u>Resistance :</u></b>	A level above market price (previous highs) where sellers showed strength, in a bear market sell near the resistance level and don't buy on the support. A break above the resistance is considered to be a bullish sign.
<b><u>Stop Loss :</u></b>	Must exit the current position whenever the closing price is (1% to 2%) below the stop loss and confirmed by volume.
<b><u>Triggers :</u></b>	The range between the lower trigger and the upper is used for trading, break of any of them, the move would continue in the same direction.
<b><u>Yellow rows:</u></b>	indication that the stock closed below/above support, stop-loss, or resistance but the break is not confirmed yet.

#### Disclaimer

- This publication has been prepared by Blom Egypt Securities for information purposes only.
- It is not intended as an offer to buy or sell or a solicitation of an offer to buy or sell the securities mentioned.
- The information & opinions in this publication were prepared by Blom Egypt Securities research department accepts no liability or legal responsibility for losses & damages incurred arising from the use of this publication or its contents.

**Blom Egypt Securities**  
**Samir M. Azmi, CFTe, CETA**  
**Senior Technical Analyst**  
[samir.azmi@blomsecurities.com](mailto:samir.azmi@blomsecurities.com)