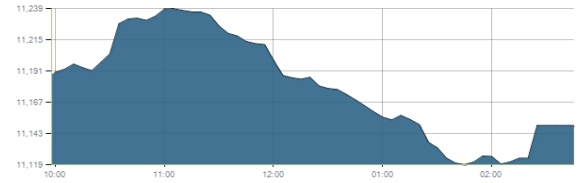




Indices intraday trends

EGX 30

مؤشر EGX 30  
اليوم - 15/09/2021

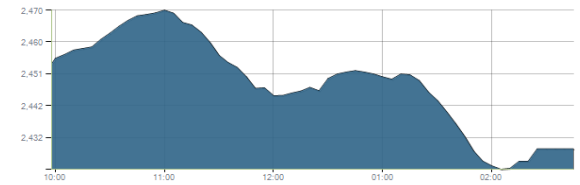


Key Levels

Support 1	10950-10850	Resistance 1	11200
Support 2	10680	Resistance 2	11430

EGX 50 EWI

مؤشر EGX 50 EWI  
اليوم - 15/09/2021

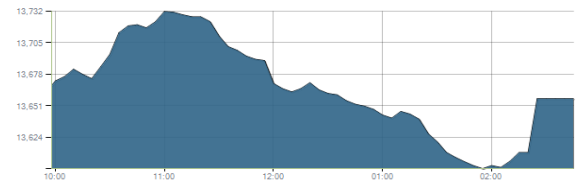


Key Levels

Close		2429.09	
Support 1	2385	Resistance 1	2450
Support 2	2310	Resistance 2	2560

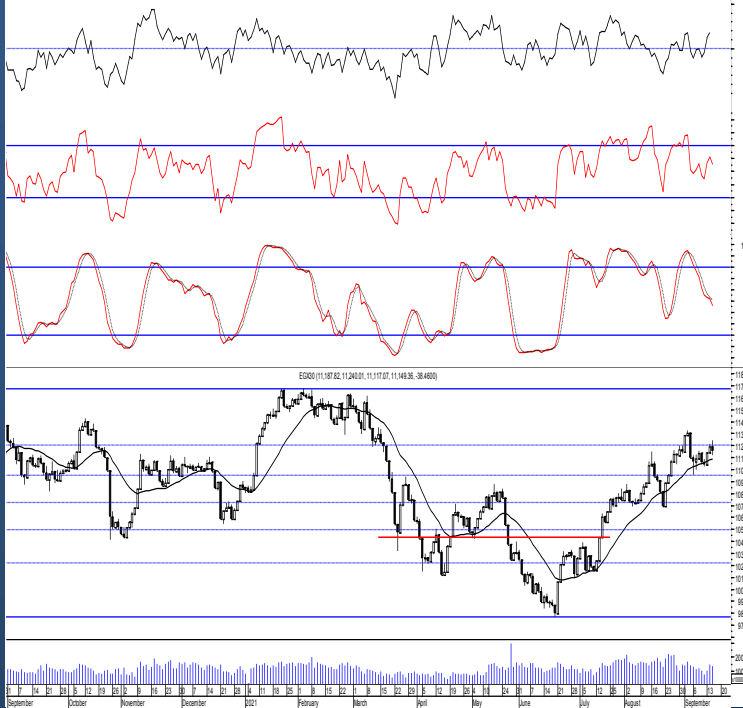
EGX 30 capped

مؤشر EGX 30 Capped  
اليوم - 15/09/2021



Key Levels

Close		13657.04	
Support 1	13400	Resistance 1	13800
Support 2	13130	Resistance 2	14140



Market Commentary:

The EGX30 closed in red near the session's mid range after failing to remain above our important resistance level 11200 as selling pressure remained in control leaving everything in place. Trading flat within the mentioned levels is still expected where we may conservatively use for quick trades keeping close stops. Yet, levels are still the same and so for our outlook, the upside expectations will only be by clearing 11200. It is very important to watch any violated stop to avoid any further decline while new positions are advised to wait for a confirmed buy signal to react safely on.

Close	11149.36	Trend	Up-Corr.
Pre. Close	11187.82	Target 1	---
Change	↓ 38.46 ( 0.34% )	Target 2	---
Day's range	11240.01 — 11117.07	Stop-loss	10680
52week's high	11675.69	52week's low	9769.18.18

Disclaimer

- This publication has been prepared by Blom Egypt Securities for information purposes only.
- It is not intended as an offer to buy or sell or a solicitation of an offer to buy or sell the securities mentioned.
- The information & opinions in this publication were prepared by Blom Egypt Securities research department accepts no liability or legal responsibility for losses & damages incurred arising from the use of this publication or its contents.

**Blom Egypt Securities**  
Samir M. Azmi, CFTe, CETA  
Senior Technical Analyst  
samir.azmi@blomsecurities.com

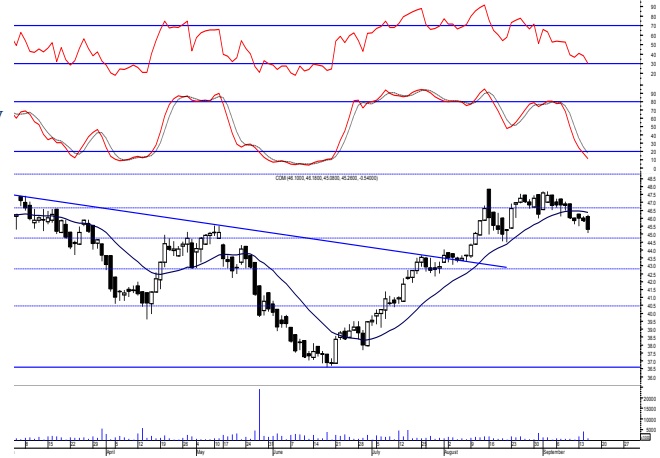


**Commercial international bank (COMI.CA):**

Prices witnessed a downward move closing near the low of the day suggesting further decline where as we said will likely reach the support level 44.70.

We recommend staying on cash watching the coming support level 44.70 where we may open new trades on but should be supported by confirmed positive signals to react safely on.

Support levels: 44.70, 42.30  
Resistance levels: 46.65, 48.80

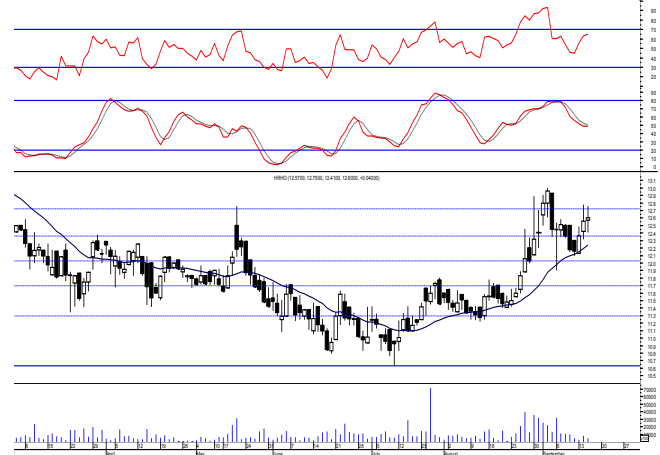


**Hermes Holding (HRHO.CA):**

Prices closed near the session's mid range after quiet trading performance keeping levels unchanged and so for our outlook.

Existing positions are advised to hold keeping stops placed and respected below 11.25 as any decline below will give back the hand to selling party.

Support levels: 12.10, 11.70  
Resistance levels: (12.60-12.75), (13.25-13.40)



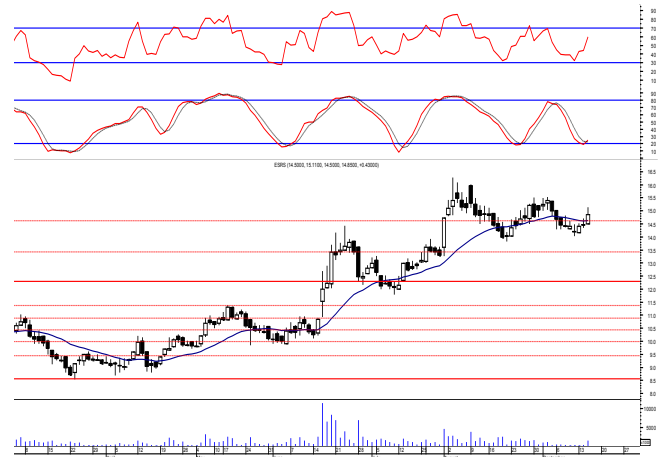
**El-Ezz steel rebar's' (ESRS.CA):**

Prices witnessed an upward move trading mostly above the mentioned resistance zone closing slightly above. Confirmation is still needed to turn the mentioned zone into support so everything is considered in place.

As we said, our Protective stop should be activated as reaching the previous reached low is expected near 13.80 any may extend reaching our support level 13.40.

New trades are advised to wait for a confirmed buy signal to react safely on.

Support levels: 13.40, 12.30  
Resistance levels: (14.40-14.65), 16.00



**Disclaimer**

- This publication has been prepared by Blom Egypt Securities for information purposes only.
- It is not intended as an offer to buy or sell or a solicitation of an offer to buy or sell the securities mentioned.
- The information & opinions in this publication were prepared by Blom Egypt Securities research department accepts no liability or legal responsibility for losses & damages incurred arising from the use of this publication or its contents.

**Blom Egypt Securities**  
**Samir M. Azmi, CFTe, CETA**  
**Senior Technical Analyst**  
**samir.azmi@blomsecurities.com**



Most active Stocks

Daily Technical Analysis Report

16 Sep, 2021

Stock Name (Reuters' Code)	Close	Trend	T1	T2	Support	Resistance	SL	Triggers	
								Lower	Upper
<b>Building Materials &amp; Construction</b>									
Arabian cement (ARCC.CA)	4.41	Bearish	—	—	4.10	4.60	—	—	—
El Ezz Steel Rebar's (ESRS.CA)	14.85	Dn.-Corr.	—	—	13.40	14.65	11.40	—	—
GB auto (AUTO.CA)	4.08	Dn.-Corr.	—	—	3.95	4.20	3.75	—	—
Orascom construction (ORAS.CA)	75.41	Bullish	78.25√	81.85	74.80	78.25	68.50	—	—
South Valley Cement (SVCE.CA)	2.27	Dn.-Corr.	—	—	2.20	2.47	1.95	—	—
Elsweddy Cables (SWDY.CA)	8.81	UP-Corr.	—	—	8.65	9.15	7.90	—	—
Upper Egypt general contracting (UEGC.CA)	0.772	Dn.-Corr.	—	—	0.765	0.79	0.73	—	—
<b>Chemicals</b>									
Abu-Qir fertilizers (ABUK.CA)	18.62	Up-Corr.	—	—	18.30	19.70	18.30	—	—
Egyptian Financial & Indust. (EFIC.CA)	13.59	Dn.-Corr.	—	—	12.85	14.00	12.85	—	—
Egyptian chemical industries-Kima (EGCH.CA)	4.35	Dn.-Corr.	—	—	4.20	4.47	4.20	—	—
<b>Communications</b>									
Fawry for banking tech. & electronic payment (FWRY.CA)	17.00	Up-Corr.	—	—	16.85	17.65	15.45	—	—
Orascom investment holding (OIH.CA)	0.264	Dn.-Corr.	—	—	0.25	0.278	0.192	—	—
Telecom Egypt (ETEL.CA)	14.51	Dn.-Corr.	15.20√	16.60	14.30	15.70	12.90	—	—
<b>Financial Services</b>									
Abu Dhabi International Bank (ADIB.CA)	14.78	Up-Corr.	—	—	14.75	15.75	13.65	—	—
Arabian for investments & development (AIH.CA)	0.46	Up-Corr.	—	—	0.435	0.485	0.403	—	—
Amer holding group (AMER.CA)	0.851	Up-Corr.	—	—	0.825	0.87	0.78	—	—
Commercial International Bank (COMI.CA)	45.26	Dn.-Corr.	—	—	44.70	46.65	42.30	—	—
Export development bank of Egypt (EXPA.CA)	10.69	Dn.-Corr.	—	—	10.55	11.00	9.90	—	—
<b>Holding Companies</b>									
Citadel capital (CCAP.CA)	1.214	Up-Corr.	—	—	1.16	1.23	1.09	—	—
Hermes Holding (HRHO.CA)	12.60	Dn.-Corr.	—	—	12.10	12.75	11.25	—	—
Kuwaiti Holding (EKHO.CA)	1.17	Bullish	1.13√	1.19	1.15	1.23	0.96	—	—
MM group for industry & international trade (MTIE.CA)	7.73	Dn.-Corr.	—	—	7.30	7.80	7.30	—	—
Orascom financial holding (OFH.CA)	0.283	Dn.-Corr.	—	—	0.275	0.31	0.275	—	—
Pioneers holding (PIOH.CA)	5.95	Dn.-Corr.	—	—	5.75	6.10	5.45	—	—
<b>Housing &amp; Real Estate</b>									
Egyptian For Tourism Resorts (EGTS.CA)	2.28	Dn.-Corr.	—	—	2.10	2.37	1.95	—	—
Elshams housing (ELSH.CA)	10.47	Up-Corr.	—	—	10.00	12.10	10.00	—	—
Emaar holding (EMFD.CA)	2.74	Dn.-Corr.	—	—	2.65	2.845	2.28	—	—
Heliopolis housing & development (HELI.CA)	5.62	Dn.-Corr.	—	—	5.55	5.90	4.85	—	—
Medinet Nasr for housing & Deve. (MNHD.CA)	3.02	Up-Corr.	—	—	2.90	3.05	2.90	—	—
6th. October Deve. Inv. (OCDI.CA)	18.90	Bullish	19.25	20.40	18.55	19.25	16.90	—	—
Palm hills development Co. (PHDC.CA)	2.088	Bullish	2.03√	2.11	2.03	2.11	1.60	—	—
Talaat Mustafa group holding (TMGH.CA)	7.78	Bullish	8.20	8.90	7.50	8.00	6.90	—	—
<b>Mining &amp; Gas</b>									
Alexandria Mineral Oils Co. (AMOC.CA)	3.65	Dn.-Corr.	—	—	3.50	3.62	3.20	—	—
Sidi Kerir Petrochemicals (SKPC.CA)	9.69	Bearish	—	—	9.30	10.30	—	—	—
<b>Textiles &amp; Clothes</b>									
Arab Co. for asset management & Deve. (ACAMD.CA)	0.639	Up-Corr.	—	—	0.64	0.705	0.567	—	—
Arab cotton ginning (ACGC.CA)	1.87	Up-Corr.	—	—	1.77	1.95	1.70	—	—
Oriental Weavers (ORWE.CA)	9.05	Bullish	9.25√	9.70	8.90	9.25	7.50	—	—
<b>Other Sectors</b>									
Egyptian Media Production City (MPC.CA)	5.93	Dn.-Corr.	—	—	5.90	6.20	5.90	—	—
Egyptian Transport - Egytrans (ETRS.CA)	14.45	Up-Corr.	—	—	13.60	14.60	13.60	—	—
Orascom holding development (ORHD.CA)	4.86	Up-Corr.	—	—	4.85	5.05	4.64	—	—
United Arab Shipping (UASG.CA)	1.298	Dn.-Corr.	—	—	1.21	1.34	1.15	—	—

Disclaimer

- This publication has been prepared by Blom Egypt Securities for information purposes only.
- It is not intended as an offer to buy or sell or a solicitation of an offer to buy or sell the securities mentioned.
- The information & opinions in this publication were prepared by Blom Egypt Securities research department accepts no liability or legal responsibility for losses & damages incurred arising from the use of this publication or its contents.

**Blom Egypt Securities**  
Samir M. Azmi, CFTe, CETA  
Senior Technical Analyst  
samir.azmi@blomsecurities.com



**Guidelines for using BLOM daily Technical Analysis Report**

<b><u>Close:</u></b>	Is recorded as the last trade in the session.
<b><u>Trend:</u></b>	
<b>Bullish :</b>	The strategy is to buy the dips.
<b>Bearish :</b>	The strategy is to sell the rallies.
<b>Flat :</b>	The strategy is to trade the range between the triggers.
<b>Up-Corr. :</b>	A move against the major trend when it is down.
<b>Dn.-Corr. :</b>	A move against the major trend when it is up.
<b><u>Targets :</u></b>	Take some profit by reducing a portion of the position whenever a price target is been hit.
<b><u>Support :</u></b>	A level below market price (previous lows) where buyers showed strength, in a bull market buy near the support and don't sell on the resistance. A break below the Support is considered to be a bearish sign.
<b><u>Resistance :</u></b>	A level above market price (previous highs) where sellers showed strength, in a bear market sell near the resistance level and don't buy on the support. A break above the resistance is considered to be a bullish sign.
<b><u>Stop Loss :</u></b>	Must exit the current position whenever the closing price is (1% to 2%) below the stop loss and confirmed by volume.
<b><u>Triggers :</u></b>	The range between the lower trigger and the upper is used for trading, break of any of them, the move would continue in the same direction.
<b><u>Yellow rows:</u></b>	indication that the stock closed below/above support, stop-loss, or resistance but the break is not confirmed yet.

**Disclaimer**

- This publication has been prepared by Blom Egypt Securities for information purposes only.
- It is not intended as an offer to buy or sell or a solicitation of an offer to buy or sell the securities mentioned.
- The information & opinions in this publication were prepared by Blom Egypt Securities research department accepts no liability or legal responsibility for losses & damages incurred arising from the use of this publication or its contents.

**Blom Egypt Securities**  
**Samir M. Azmi, CFTe, CETA**  
**Senior Technical Analyst**  
**samir.azmi@blomsecurities.com**