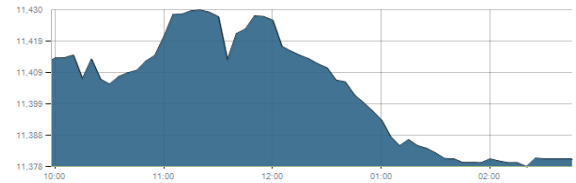




Indices intraday trends

EGX 30

مؤشر EGX 30
اليوم - 18/02/2021

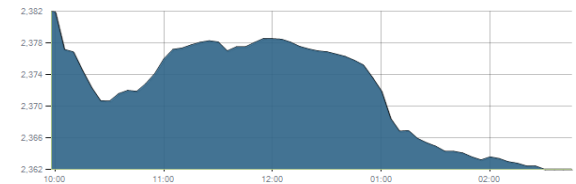


Key Levels

Support 1	11230	Resistance 1	11450-11500
Support 2	11050	Resistance 2	11850

EGX 50 EWI

مؤشر EGX 50 EWI
اليوم - 18/02/2021

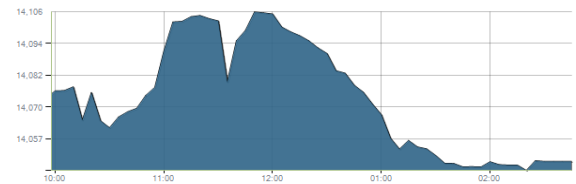


Key Levels

Close		2361.70	
Support 1	2360	Resistance 1	2430
Support 2	2300	Resistance 2	2600

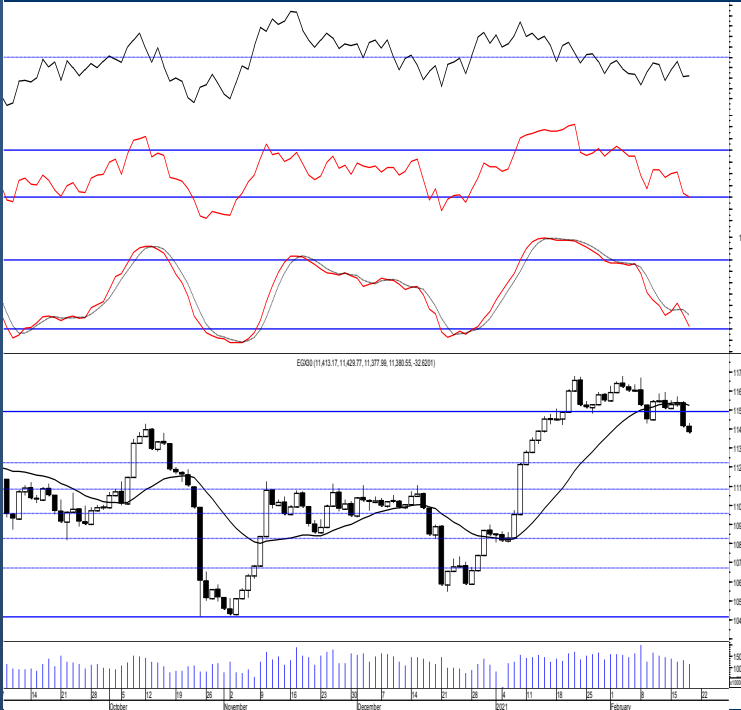
EGX 30 capped

مؤشر EGX 30 Capped
اليوم - 18/02/2021



Key Levels

Close		14048.70	
Support 1	13850	Resistance 1	14200
Support 2	13750	Resistance 2	14750



Market Commentary:

The EGX30 closed in red near the session's low after failing to continue the early rally attempt as selling pressure dominated closing the index below the mentioned support zone for the 2nd session confirming the violation turning it into resistance.

As we said, bears gained the near term technical advantage and therefore further decline will follow to the next support level 11230 where we believe will represent a good buying opportunity.

Close	11380.55	Trend	Dn.-Corr.
Pre. Close	11413.17	Target 1	---
Change	↓ 32.62 (0.29%)	Target 2	---
Day's range	11429.77 — 11377.99	Stop-loss	11230
52week's high	14831.20	52week's low	8113.82

Disclaimer

- This publication has been prepared by Blom Egypt Securities for information purposes only.
- It is not intended as an offer to buy or sell or a solicitation of an offer to buy or sell the securities mentioned.
- The information & opinions in this publication were prepared by Blom Egypt Securities research department accepts no liability or legal responsibility for losses & damages incurred arising from the use of this publication or its contents.

Blom Egypt Securities
Samir M. Azmi, CFTe, CETA
Senior Technical Analyst
samir.azmi@blomsecurities.com

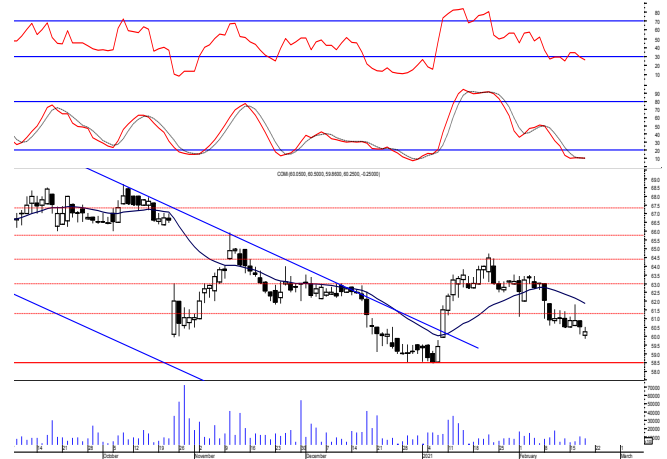


Commercial international bank (COMI.CA):

Prices closed flat within the same range closing in red after successfully testing the support level 60.00 keeping levels the same and so for our outlook.

Strength signals again occurred on the intraday suggesting bouncing higher from current level but should be confirmed by price action along with increasing trading volumes. Protective stop should be placed below 60.00.

Support levels: 60.00, 58.50
Resistance levels: 63.00, 64.50

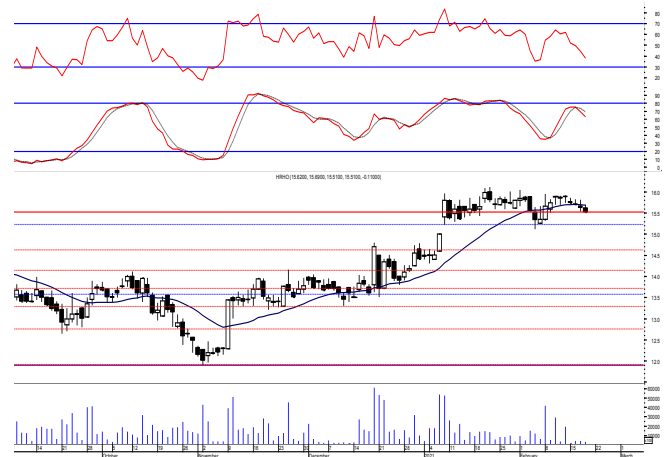


Hermes Holding (HRHO.CA):

Prices closed in red near the low as selling pressure dominated approaching our important support zone where as we said it is very important to defend the mentioned zone to prove that buyers are still in control.

New target zone within 16.60-17.10 where we believe it represents strong retracement level where may use trade on. Close stops should always be placed and respected to protect the downside.

Support levels: 15.55-15.25, 14.60
Resistance levels: 16.60-17.10, 17.80

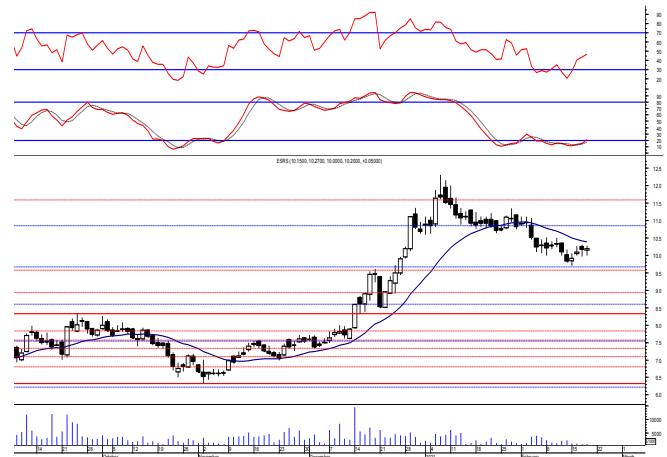


El-Ezz steel rebar's' (ESRS.CA):

Prices remained narrowly flat closing slightly positive as balanced trading performance dominated leaving everything in place.

As we said, we may close our sold positions after the violation of 10.60 bearing in mind that any violation to the mentioned support will keep prices under further stress and lower levels will be expected.

Support levels: 9.80, 8.90
Resistance levels: 10.60, 10.90



Disclaimer

- This publication has been prepared by Blom Egypt Securities for information purposes only.
- It is not intended as an offer to buy or sell or a solicitation of an offer to buy or sell the securities mentioned.
- The information & opinions in this publication were prepared by Blom Egypt Securities research department accepts no liability or legal responsibility for losses & damages incurred arising from the use of this publication or its contents.

Blom Egypt Securities
Samir M. Azmi, CFTe, CETA
Senior Technical Analyst
samir.azmi@blomsecurities.com



Most active Stocks

Daily Technical Analysis Report

21 Feb, 2021

Stock Name (Reuters' Code)	Close	Trend	T1	T2	Support	Resistance	SL	Triggers	
								Lower	Upper
Building Materials & Construction									
Arabian cement (ARCC.CA)	3.17	Dn.-Corr.	—	—	3.17	3.40	3.00	—	—
El Ezz Steel Rebar's (ESRS.CA)	10.20	Bearish	—	—	9.80	10.60	—	—	—
GB auto (AUTO.CA)	3.71	Dn.-Corr.	—	—	3.50	3.77	3.48	—	—
Orascom construction (ORAS.CA)	94.00	Dn.-Corr.	—	—	93.00	96.00	81.00	—	—
South Valley Cement (SVCE.CA)	1.94	Dn.-Corr.	—	—	1.84	2.00	1.84	—	—
Elswedey Cables (SWDY.CA)	9.58	Dn.-Corr.	—	—	9.60	10.15	9.60	—	—
Upper Egypt general contracting (UEGC.CA)	1.042	Dn.-Corr.	—	—	0.995	1.09	0.995	—	—
Chemicals									
Abu-Qir fertilizers (ABUK.CA)	21.57	Dn.-Corr.	—	—	20.60	21.70	19.20	—	—
Egyptian Financial & Indust. (EFIC.CA)	11.89	Up-Corr.	—	—	11.85	12.80	11.10	—	—
Egyptian chemical industries-Kima (EGCH.CA)	4.07	Up-Corr.	—	—	4.00	4.25	3.80	—	—
Communications									
Orascom investment holding (OIH.CA)	0.265	Bullish	0.225	0.262√	0.24	0.262	0.20	—	—
Telecom Egypt (ETEL.CA)	11.50	Up-Corr.	—	—	11.40	11.90	11.40	—	—
Financial Services									
Abu Dhabi International Bank (ADIB.CA)	11.87	Dn.-Corr.	—	—	11.80	12.10	11.20	—	—
Arabian for investments & development (AIH.CA)	0.658	Dn.-Corr.	—	—	0.64	0.69	0.59	—	—
Amer holding group (AMER.CA)	1.20	Dn.-Corr.	—	—	1.14	1.25	0.98	—	—
Commercial International Bank (COMI.CA)	60.25	Up-Corr.	—	—	60.00	63.00	58.50	—	—
Export development bank of Egypt (EXPA.CA)	13.51	Up-Corr.	—	—	13.30	14.00	13.30	—	—
Holding Companies									
CI capital holding for financial investments (CICH.CA)	4.65	Bullish	4.87	5.25	4.45	4.87	4.15	—	—
Citadel capital (CCAP.CA)	1.481	Up-Corr.	—	—	1.45	1.53	1.39	—	—
Hermes Holding (HRHO.CA)	15.51	Bullish	16.60	17.80	15.20	17.10	14.60	—	—
Kuwaiti Holding (EKHO.CA)	1.139	Up-Corr.	—	—	1.09	1.18	0.94	—	—
MM group for industry & international trade (MTIE.CA)	10.30	Bullish	10.80√	11.40	10.00	10.80	8.70	—	—
Pioneers holding (PIOH.CA)	5.65	Bullish	5.95	6.30	5.40	5.95	4.45	—	—
Housing & Real Estate									
Egyptian For Tourism Resorts (EGTS.CA)	1.481	Up-Corr.	—	—	1.45	1.52	1.45	—	—
Elshams housing (ELSH.CA)	5.00	Dn.-Corr.	—	—	4.85	5.05	4.85	—	—
Emaar holding (EMFD.CA)	2.48	Dn.-Corr.	—	—	2.45	2.65	2.45	—	—
Heliopolis housing & development (HELL.CA)	5.72	Up-Corr.	—	—	5.50	5.90	5.50	—	—
Medinet Nasr for housing & Deve. (MNHD.CA)	3.74	Up-Corr.	—	—	3.75	3.83	3.75	—	—
6th. October Deve. Inv. (OCDI.CA)	16.50	Bullish	17.00	18.70	16.00	17.00	13.90	—	—
Palm hills development Co. (PHDC.CA)	1.71	Bullish	1.86	2.00	1.70	1.86	1.53	—	—
Talaat Mustafa group holding (TMGH.CA)	6.92	Dn.-Corr.	—	—	6.90	7.15	6.90	—	—
Mining & Gas									
Alexandria Mineral Oils Co. (AMOC.CA)	3.20	Dn.-Corr.	—	—	3.13	3.37	3.00	—	—
Sidi Kerir Petrochemicals (SKPC.CA)	10.72	Dn.-Corr.	—	—	9.80	10.60	9.20	—	—
Textiles & Clothes									
Arab Co. for asset management & Deve. (ACAMD.CA)	N/A	Up-Corr.	—	—	1.15	1.20	1.07	—	—
Arab cotton ginning (ACGC.CA)	3.25	Up-Corr.	—	—	3.20	3.45	2.85	—	—
Oriental Weavers (ORWE.CA)	6.91	Up-Corr.	—	—	6.50	7.00	6.50	—	—
Other Sectors									
Egyptian Media Production City (MPRC.CA)	7.76	Up-Corr.	—	—	7.45	8.20	5.40	—	—
Egyptian Transport - Egytrans (ETRS.CA)	11.59	Dn.-Corr.	—	—	11.00	11.60	10.40	—	—
Orascom holding development (ORHD.CA)	5.00	Dn.-Corr.	—	—	4.65	4.85	4.45	—	—
United Arab Shipping (UASG.CA)	1.22	Dn.-Corr.	—	—	1.15	1.23	1.05	—	—

Disclaimer

- This publication has been prepared by Blom Egypt Securities for information purposes only.
- It is not intended as an offer to buy or sell or a solicitation of an offer to buy or sell the securities mentioned.
- The information & opinions in this publication were prepared by Blom Egypt Securities research department accepts no liability or legal responsibility for losses & damages incurred arising from the use of this publication or its contents.

Blom Egypt Securities
Samir M. Azmi, CFTe, CETA
Senior Technical Analyst
samir.azmi@blomsecurities.com



Guidelines for using BLOM daily Technical Analysis Report

<u>Close:</u>	Is recorded as the last trade in the session.
<u>Trend:</u>	
Bullish :	The strategy is to buy the dips.
Bearish :	The strategy is to sell the rallies.
Flat :	The strategy is to trade the range between the triggers.
Up-Corr. :	A move against the major trend when it is down.
Dn.-Corr. :	A move against the major trend when it is up.
<u>Targets :</u>	Take some profit by reducing a portion of the position whenever a price target is been hit.
<u>Support :</u>	A level below market price (previous lows) where buyers showed strength, in a bull market buy near the support and don't sell on the resistance. A break below the Support is considered to be a bearish sign.
<u>Resistance :</u>	A level above market price (previous highs) where sellers showed strength, in a bear market sell near the resistance level and don't buy on the support. A break above the resistance is considered to be a bullish sign.
<u>Stop Loss :</u>	Must exit the current position whenever the closing price is (1% to 2%) below the stop loss and confirmed by volume.
<u>Triggers :</u>	The range between the lower trigger and the upper is used for trading, break of any of them, the move would continue in the same direction.
<u>Yellow rows:</u>	indication that the stock closed below/above support, stop-loss, or resistance but the break is not confirmed yet.

Disclaimer

- This publication has been prepared by Blom Egypt Securities for information purposes only.
- It is not intended as an offer to buy or sell or a solicitation of an offer to buy or sell the securities mentioned.
- The information & opinions in this publication were prepared by Blom Egypt Securities research department accepts no liability or legal responsibility for losses & damages incurred arising from the use of this publication or its contents.

Blom Egypt Securities
Samir M. Azmi, CFTe, CETA
Senior Technical Analyst
samir.azmi@blomsecurities.com