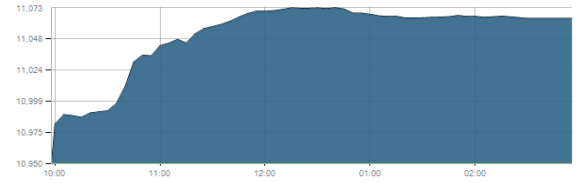




Indices intraday trends

EGX 30

مؤشر EGX 30
اليوم - 25/08/2021

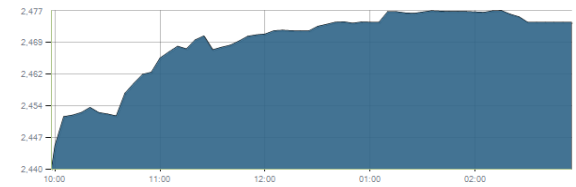


Key Levels

Support 1	10950-10850	Resistance 1	11200
Support 2	10600	Resistance 2	11430

EGX 50 EWI

مؤشر EGX 50 EWI
اليوم - 25/08/2021

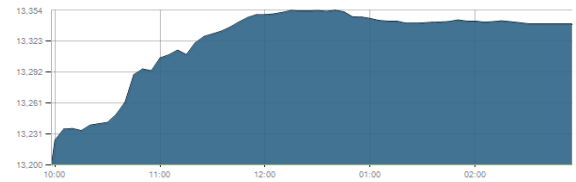


Key Levels

Close		2474.01	
Support 1	2450	Resistance 1	2500
Support 2	2370	Resistance 2	2625

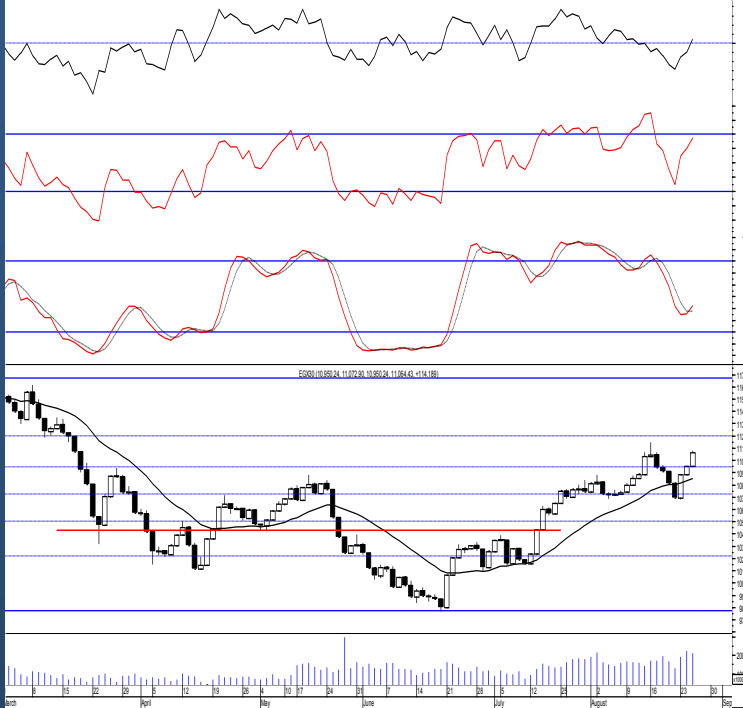
EGX 30 capped

مؤشر EGX 30 Capped
اليوم - 25/08/2021



Key Levels

Close		13340.71	
Support 1	13130	Resistance 1	13400
Support 2	12970	Resistance 2	13770



Market Commentary:

The EGX30 extended higher as we expected clearing the resistance zone 10850-10950 turning it into support.

Trading volumes significantly increased which still indicates real buying strength suggesting high potential to continue to the coming strong resistance level 11200.

Buying process should be very selective on the stocks that are trading near supports or that managed to confirm breakout and always keep close stops placed and respected.

Existing positions are advised to use trailing stop strategy to protect profits.

Close	11064.43	Trend	Up-Corr.
Pre. Close	10950.24	Target 1	---
Change	↑ 114.19 (1.04%)	Target 2	---
Day's range	10950.24 — 11072.90	Stop-loss	9900
52week's high	11675.69	52week's low	9769.18.18

Disclaimer

- This publication has been prepared by Blom Egypt Securities for information purposes only.
- It is not intended as an offer to buy or sell or a solicitation of an offer to buy or sell the securities mentioned.
- The information & opinions in this publication were prepared by Blom Egypt Securities research department accepts no liability or legal responsibility for losses & damages incurred arising from the use of this publication or its contents.

Blom Egypt Securities
Samir M. Azmi, CFTe, CETA
Senior Technical Analyst
samir.azmi@blomsecurities.com



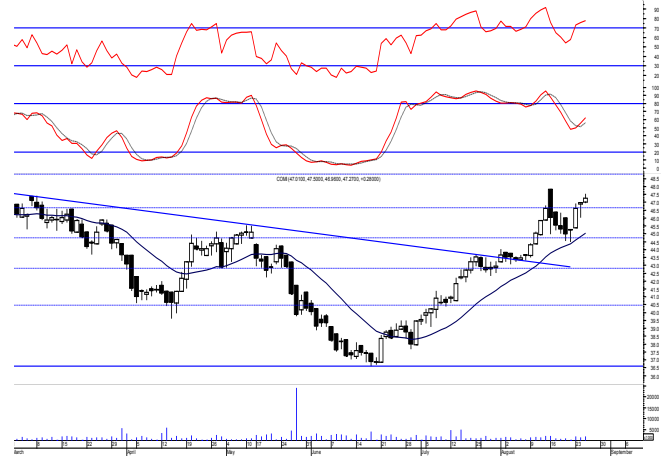
Commercial international bank (COMI.CA):

Prices witnessed another upward move which as we said is still expected to extend to the coming resistance level 48.80. New positions could be opened now using the mentioned levels to trade gradually on

Trailing stop strategy should be followed to protect profits and reduce risk

Support levels: 46.65, 44.70

Resistance levels: 48.80, 51.60



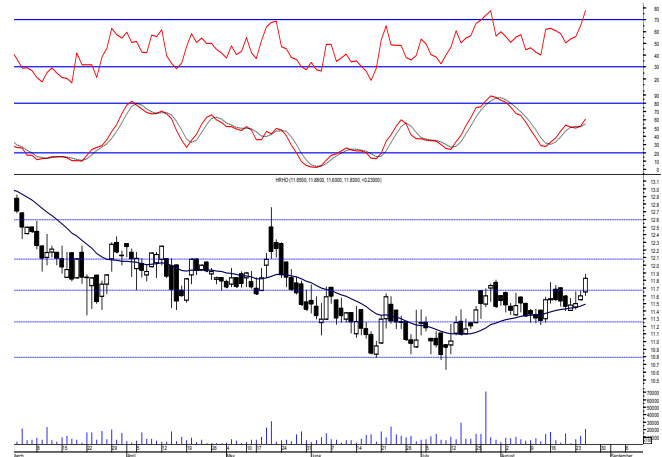
Hermes Holding (HRHO.CA):

Prices witnessed an upward move managing to clear the resistance level 11.70. positive signals are now evident which as we said supports our outlook that high potential to reach the second level 12.10 is still valid specially after managing to defend the support level 11.25.

Protective stop should always be placed and respected below 11.25 as any decline below will give back the hand to selling party.

Support levels: 11.70, 11.25

Resistance levels: 12.10, (12.60-12.75)



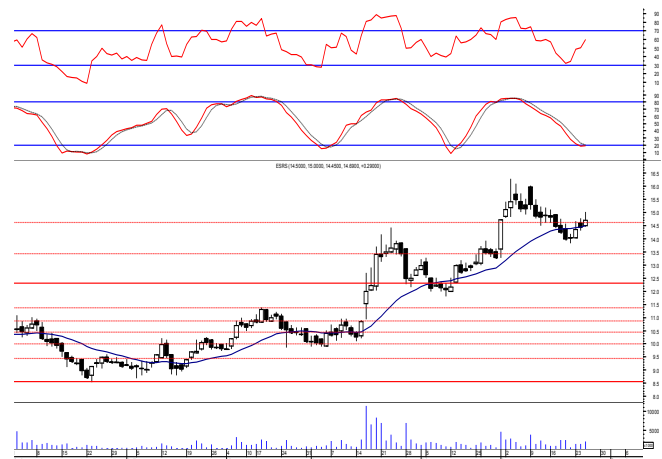
El-Ezz steel rebar's' (ESRS.CA):

Prices closed positive slightly above the mentioned resistance zone which still needs confirmation specially that the close is nearer the session's low so levels are considered the same and so for our outlook.

Further decline is now expected which will likely reach near the coming support 13.40 where we may buy the recent traded positions.

Support levels: 13.40, 12.30

Resistance levels: (14.40-14.65), 16.00



Disclaimer

- This publication has been prepared by Blom Egypt Securities for information purposes only.
- It is not intended as an offer to buy or sell or a solicitation of an offer to buy or sell the securities mentioned.
- The information & opinions in this publication were prepared by Blom Egypt Securities research department accepts no liability or legal responsibility for losses & damages incurred arising from the use of this publication or its contents.

Blom Egypt Securities
Samir M. Azmi, CFTe, CETA
Senior Technical Analyst
samir.azmi@blomsecurities.com



Most active Stocks

Daily Technical Analysis Report

26 Aug, 2021

Stock Name (Reuters' Code)	Close	Trend	T1	T2	Support	Resistance	SL	Triggers	
								Lower	Upper
Building Materials & Construction									
Arabian cement (ARCC.CA)	5.32	Dn.-Corr.	—	—	5.30	5.60	4.50	—	—
El Ezz Steel Rebar's (ESRS.CA)	14.69	Dn.-Corr.	—	—	13.40	14.65	11.40	—	—
GB auto (AUTO.CA)	4.10	Bullish	4.20	4.45	3.95	4.20	3.75	—	—
Orascom construction (ORAS.CA)	73.26	Dn.-Corr.	—	—	71.50	74.80	68.50	—	—
South Valley Cement (SVCE.CA)	2.51	Dn.-Corr.	—	—	2.45	2.75	1.95	—	—
Elsweddy Cables (SWDY.CA)	8.60	UP-Corr.	—	—	8.30	8.65	7.40	—	—
Upper Egypt general contracting (UEGC.CA)	0.856	Bullish	0.89	0.93	0.81	0.89	0.73	—	—
Chemicals									
Abu-Qir fertilizers (ABUK.CA)	19.03	Up-Corr.	—	—	18.30	19.70	18.30	—	—
Egyptian Financial & Indust. (EFIC.CA)	14.50	Flat	—	—	—	—	12.85	14.00	15.50
Egyptian chemical industries-Kima (EGCH.CA)	4.50	Dn.-Corr.	4.45√	4.95	4.45	4.95	3.75	—	—
Communications									
Orascom investment holding (OIH.CA)	0.245	Bullish	0.232√	0.257	0.232	0.257	0.192	—	—
Telecom Egypt (ETEL.CA)	14.66	Dn.-Corr.	15.20√	16.60	14.30	15.70	12.90	—	—
Financial Services									
Abu Dhabi International Bank (ADIB.CA)	17.02	Dn.-Corr.	—	—	16.25	17.30	14.60	—	—
Arabian for investments & development (AIH.CA)	0.503	Up-Corr.	—	—	0.48	0.505	0.46	—	—
Amer holding group (AMER.CA)	0.927	Up-Corr.	—	—	0.888	0.945	0.78	—	—
Commercial International Bank (COMI.CA)	47.27	Bullish	46.65√	48.80	46.65	48.80	42.30	—	—
Export development bank of Egypt (EXPA.CA)	11.60	Dn.-Corr.	—	—	11.60	12.50	9.90	—	—
Holding Companies									
Citadel capital (CCAP.CA)	1.231	Up-Corr.	—	—	1.21	1.31	1.09	—	—
Hermes Holding (HRHO.CA)	11.83	Bullish	12.10	12.70	11.70	12.10	11.25	—	—
Kuwaiti Holding (EKHO.CA)	1.14	Bullish	1.13√	1.19	1.06	1.15	0.96	—	—
MM group for industry & international trade (MTIE.CA)	7.62	Dn.-Corr.	—	—	7.35	7.80	6.50	—	—
Orascom financial holding (OFH.CA)	0.297	Dn.-Corr.	—	—	0.275	0.31	0.275	—	—
Pioneers holding (PIOH.CA)	5.63	Bullish	5.45√	6.10	5.45	6.10	4.80	—	—
Housing & Real Estate									
Egyptian For Tourism Resorts (EGTS.CA)	2.73	Bullish	2.68√	3.05	2.35	2.68	1.95	—	—
Elshams housing (ELSH.CA)	16.83	Bullish	15.50√	17.00	15.50	17.00	12.85	—	—
Emaar holding (EMFD.CA)	2.48	Up-Corr.	—	—	2.38	2.50	2.12	—	—
Heliopolis housing & development (HELL.CA)	5.10	Up-Corr.	—	—	5.00	5.30	4.30	—	—
Medinet Nasr for housing & Deve. (MNHD.CA)	2.94	Up-Corr.	—	—	2.90	3.05	2.90	—	—
6th. October Deve. Inv. (OCDI.CA)	16.74	Dn.-Corr.	—	—	16.25	17.40	15.70	—	—
Palm hills development Co. (PHDC.CA)	1.88	Dn.-Corr.	—	—	1.80	1.89	1.60	—	—
Talaat Mustafa group holding (TMGH.CA)	6.86	Dn.-Corr.	—	—	6.65	7.00	6.30	—	—
Mining & Gas									
Alexandria Mineral Oils Co. (AMOC.CA)	3.70	Dn.-Corr.	—	—	3.60	3.88	3.20	—	—
Sidi Kerir Petrochemicals (SKPC.CA)	10.46	Bearish	—	—	10.25	11.10	—	—	—
Textiles & Clothes									
Arab Co. for asset management & Deve. (ACAMD.CA)	0.64	Up-Corr.	—	—	0.60	0.645	0.60	—	—
Arab cotton ginning (ACGC.CA)	1.94	Up-Corr.	—	—	1.92	2.08	1.70	—	—
Oriental Weavers (ORWE.CA)	8.50	Dn.-Corr.	—	—	8.25	8.65	7.50	—	—
Other Sectors									
Egyptian Media Production City (MPRC.CA)	6.47	Bullish	6.90√	7.35	6.45	7.10	5.90	—	—
Egyptian Transport - Egytrans (ETRS.CA)	15.81	Up-Corr.	—	—	14.90	15.90	13.60	—	—
Orascom holding development (ORHD.CA)	4.90	Bearish	—	—	4.70	5.05	4.95	—	—
United Arab Shipping (UASG.CA)	1.38	Dn.-Corr.	—	—	1.32	1.47	1.15	—	—

Disclaimer

- This publication has been prepared by Blom Egypt Securities for information purposes only.
- It is not intended as an offer to buy or sell or a solicitation of an offer to buy or sell the securities mentioned.
- The information & opinions in this publication were prepared by Blom Egypt Securities research department accepts no liability or legal responsibility for losses & damages incurred arising from the use of this publication or its contents.

Blom Egypt Securities
Samir M. Azmi, CFTe, CETA
Senior Technical Analyst
samir.azmi@blomsecurities.com



Guidelines for using BLOM daily Technical Analysis Report

<u>Close:</u>	Is recorded as the last trade in the session.
<u>Trend:</u>	
Bullish :	The strategy is to buy the dips.
Bearish :	The strategy is to sell the rallies.
Flat :	The strategy is to trade the range between the triggers.
Up-Corr. :	A move against the major trend when it is down.
Dn.-Corr. :	A move against the major trend when it is up.
<u>Targets :</u>	Take some profit by reducing a portion of the position whenever a price target is been hit.
<u>Support :</u>	A level below market price (previous lows) where buyers showed strength, in a bull market buy near the support and don't sell on the resistance. A break below the Support is considered to be a bearish sign.
<u>Resistance :</u>	A level above market price (previous highs) where sellers showed strength, in a bear market sell near the resistance level and don't buy on the support. A break above the resistance is considered to be a bullish sign.
<u>Stop Loss :</u>	Must exit the current position whenever the closing price is (1% to 2%) below the stop loss and confirmed by volume.
<u>Triggers :</u>	The range between the lower trigger and the upper is used for trading, break of any of them, the move would continue in the same direction.
<u>Yellow rows:</u>	indication that the stock closed below/above support, stop-loss, or resistance but the break is not confirmed yet.

Disclaimer

- This publication has been prepared by Blom Egypt Securities for information purposes only.
- It is not intended as an offer to buy or sell or a solicitation of an offer to buy or sell the securities mentioned.
- The information & opinions in this publication were prepared by Blom Egypt Securities research department accepts no liability or legal responsibility for losses & damages incurred arising from the use of this publication or its contents.

Blom Egypt Securities
Samir M. Azmi, CFTe, CETA
Senior Technical Analyst
samir.azmi@blomsecurities.com