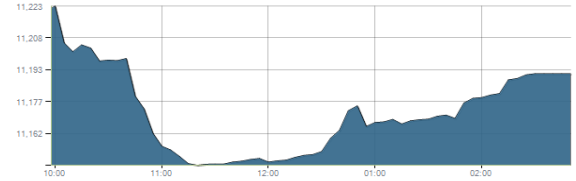




Indices intraday trends

EGX 30

مؤشر EGX 30
اليوم - 16/03/2021

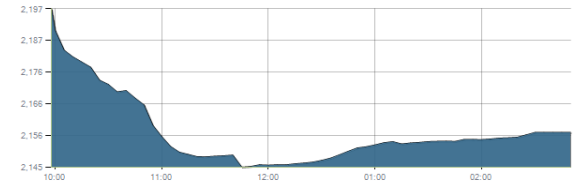


Key Levels

Support 1	11230	Resistance 1	11500-11450
Support 2	11100-11000	Resistance 2	11850

EGX 50 EWI

مؤشر EGX 50 EWI
اليوم - 16/03/2021

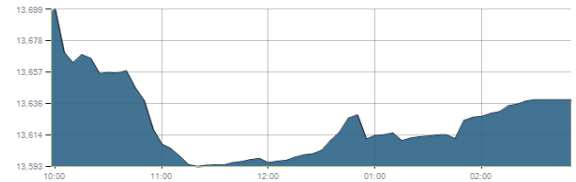


Key Levels

Close		2156.49	
Support 1	2150	Resistance 1	2230
Support 2	2045	Resistance 2	2300

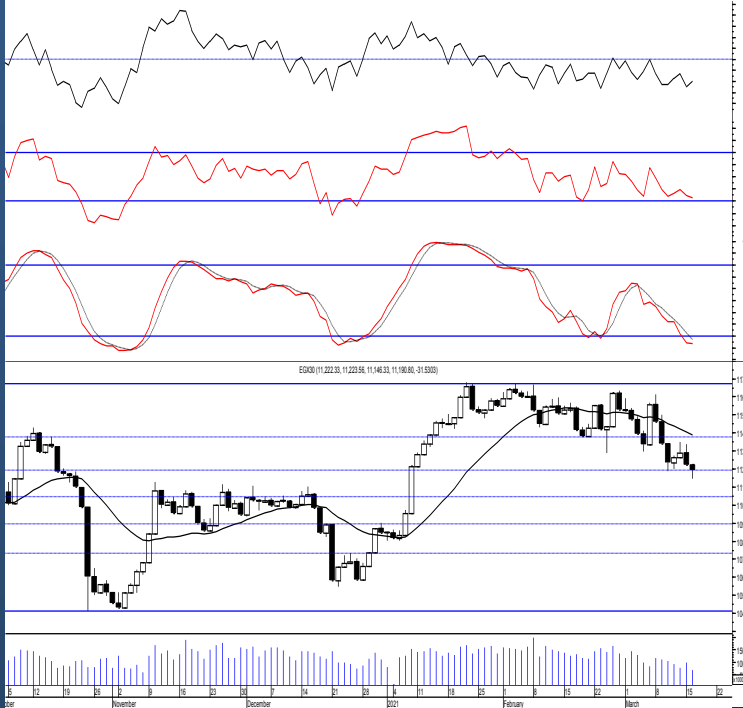
EGX 30 capped

مؤشر EGX 30 Capped
اليوم - 16/03/2021



Key Levels

Close		13638.11	
Support 1	13470	Resistance 1	13850
Support 2	13170	Resistance 2	14200



Market Commentary:

The EGX30 sled sharply lower ahead of trading before rebounding process takes place gaining more than 50% of the losses closing nearer the high below the support level 11230 which still needs confirmation specially that trading volumes are still decreasing so we recommend to watch carefully as it represents our stop loss level on the short term. Failing to defend the mentioned level will confirm that bears will have the near term technical advantage and therefore lower lows will be expected. Yet, we recommend to react on every stock separately either that are trading near their supports or that managed to confirm breakout. Always keep close stops placed and respected to reduce market risk.

Close	11190.80	Trend	Dn.-Corr.
Pre. Close	11222.33	Target 1	---
Change	↓ 31.53 (0.28%)	Target 2	---
Day's range	11223.56 — 11146.33	Stop-loss	11230
52week's high	11675.69	52week's low	8113.82

Disclaimer

- This publication has been prepared by Blom Egypt Securities for information purposes only.
- It is not intended as an offer to buy or sell or a solicitation of an offer to buy or sell the securities mentioned.
- The information & opinions in this publication were prepared by Blom Egypt Securities research department accepts no liability or legal responsibility for losses & damages incurred arising from the use of this publication or its contents.

Blom Egypt Securities
Samir M. Azmi, CFTe, CETA
Senior Technical Analyst
samir.azmi@blomsecurities.com

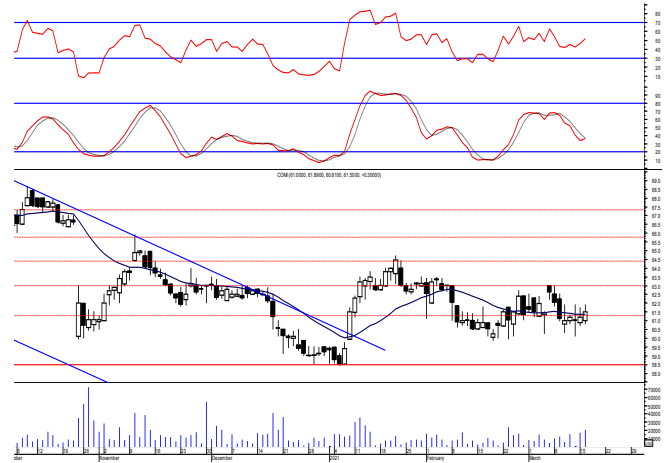


Commercial international bank (COMI.CA):

Prices inched higher ahead of trading and continued flat as balanced trading dominated closing slightly positive. Levels are the same and so for our outlook.

New trades should wait for more confirmation while existing ones are advised to keep protective stop placed below 60.00.

Support levels: 60.00, 58.50
Resistance levels: 63.00, 64.50

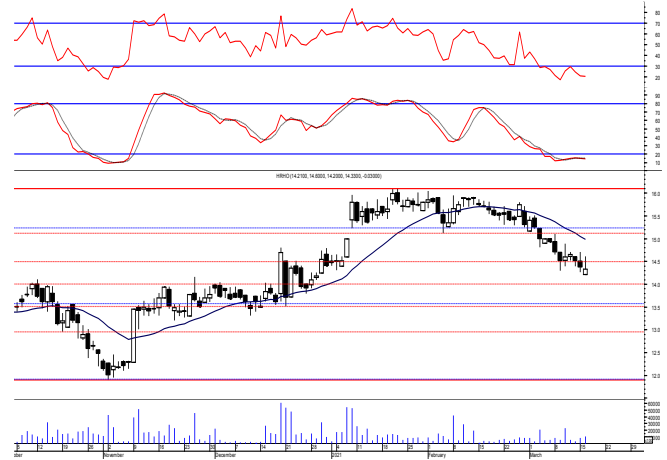


Hermes Holding (HRHO.CA):

Prices remained hovering around our support level 14.60 closing again below but we still see that another day is needed so everything is considered in place. Notice that it is very important to defend the support level 14.60 to indicate the upside potential.

Close stops should always be placed and respected to protect the downside.

Support levels: 14.60, 13.70
Resistance levels: 15.25-15.55, 16.60-17.10

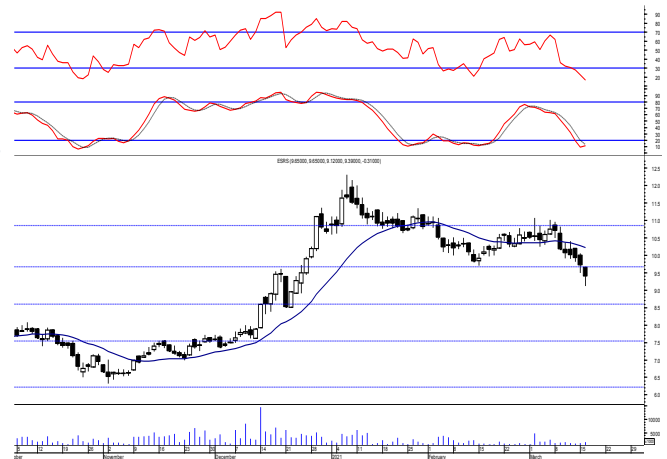


El-Ezz steel rebar's' (ESRS.CA):

Prices witnessed another downward move ahead of trading before rebounding process takes place closing again below our mentioned support but we still see that confirmation is still needed so levels are unchanged and so for our outlook.

New positions are advised to wait for a confirmed buy signal to react safely on

Support levels: 9.80, 8.50
Resistance levels: 10.60, 10.90



Disclaimer

- This publication has been prepared by Blom Egypt Securities for information purposes only.
- It is not intended as an offer to buy or sell or a solicitation of an offer to buy or sell the securities mentioned.
- The information & opinions in this publication were prepared by Blom Egypt Securities research department accepts no liability or legal responsibility for losses & damages incurred arising from the use of this publication or its contents.

Blom Egypt Securities
Samir M. Azmi, CFTe, CETA
Senior Technical Analyst
samir.azmi@blomsecurities.com



Most active Stocks

Daily Technical Analysis Report

17 Mar, 2021

Stock Name (Reuters' Code)	Close	Trend	T1	T2	Support	Resistance	SL	Triggers	
								Lower	Upper
Building Materials & Construction									
Arabian cement (ARCC.CA)	3.12	Dn.-Corr.	—	—	3.00	3.17	3.00	—	—
El Ezz Steel Rebar's (ESRS.CA)	9.39	Up-Corr.	—	—	9.80	10.60	9.80	—	—
GB auto (AUTO.CA)	4.15	Bullish	4.35	4.75	3.95	4.35	3.65	—	—
Orascom construction (ORAS.CA)	92.50	Dn.-Corr.	—	—	88.00	93.00	81.00	—	—
South Valley Cement (SVCE.CA)	1.76	Bearish	—	—	1.73	1.85	—	—	—
Elswedey Cables (SWDY.CA)	9.05	Bearish	—	—	9.15	9.65	—	—	—
Upper Egypt general contracting (UEGC.CA)	0.78	Bearish	—	—	0.725	0.815	—	—	—
Chemicals									
Abu-Qir fertilizers (ABUK.CA)	21.45	Dn.-Corr.	—	—	20.90	21.70	19.20	—	—
Egyptian Financial & Indust. (EFIC.CA)	11.61	Up-Corr.	—	—	11.50	12.00	11.50	—	—
Egyptian chemical industries-Kima (EGCH.CA)	3.83	Up-Corr.	—	—	3.80	4.00	3.60	—	—
Communications									
Orascom investment holding (OIH.CA)	0.312	Bullish	0.302√	0.345	0.30	0.345	0.243	—	—
Telecom Egypt (ETEL.CA)	10.75	Bearish	—	—	10.80	11.40	—	—	—
Financial Services									
Abu Dhabi International Bank (ADIB.CA)	11.51	Dn.-Corr.	—	—	11.20	12.00	11.20	—	—
Arabian for investments & development (AIH.CA)	0.523	Bearish	—	—	0.47	0.536	—	—	—
Amer holding group (AMER.CA)	1.126	Dn.-Corr.	—	—	1.07	1.14	0.88	—	—
Commercial International Bank (COMI.CA)	61.50	Up-Corr.	—	—	60.00	63.00	58.50	—	—
Export development bank of Egypt (EXPA.CA)	12.73	Bearish	—	—	12.50	13.30	—	—	—
Holding Companies									
CI capital holding for financial investments (CICH.CA)	4.54	Bullish	4.87	5.25	4.45	4.87	4.15	—	—
Citadel capital (CCAP.CA)	1.344	Bearish	—	—	1.315	1.40	—	—	—
Hermes Holding (HRHO.CA)	14.33	Dn.-Corr.	—	—	14.60	15.55	14.60	—	—
Kuwaiti Holding (EKHO.CA)	1.16	Up-Corr.	—	—	1.11	1.17	1.04	—	—
MM group for industry & international trade (MTIE.CA)	11.07	Dn.-Corr.	—	—	10.85	11.40	10.10	—	—
Pioneers holding (PIOH.CA)	4.68	Bearish	—	—	4.45	4.90	—	—	—
Housing & Real Estate									
Egyptian For Tourism Resorts (EGTS.CA)	1.51	Bearish	—	—	1.45	1.52	1.35	—	—
Elshams housing (ELSH.CA)	4.45	Bearish	—	—	4.15	4.60	—	—	—
Emaar holding (EMFD.CA)	2.42	Bearish	—	—	2.25	2.45	—	—	—
Heliopolis housing & development (HELL.CA)	5.10	Bearish	—	—	5.00	5.30	—	—	—
Medinet Nasr for housing & Deve. (MNHD.CA)	3.83	Up-Corr.	—	—	3.75	3.97	3.50	—	—
6th. October Deve. Inv. (OCDI.CA)	16.80	Bullish	17.00√	18.70	16.00	17.00	13.90	—	—
Palm hills development Co. (PHDC.CA)	1.65	Dn.-Corr.	—	—	1.66	1.71	1.53	—	—
Talaat Mustafa group holding (TMGH.CA)	6.54	Bearish	—	—	6.40	6.65	—	—	—
Mining & Gas									
Alexandria Mineral Oils Co. (AMOC.CA)	3.00	Up-Corr.	—	—	3.00	3.27	2.75	—	—
Sidi Kerir Petrochemicals (SKPC.CA)	11.10	Dn.-Corr.	—	—	10.50	11.10	9.80	—	—
Textiles & Clothes									
Arab Co. for asset management & Deve. (ACAMD.CA)	0.85	Up-Corr.	—	—	0.82	0.93	0.77	—	—
Arab cotton ginning (ACGC.CA)	2.69	Bearish	—	—	2.65	2.85	—	—	—
Oriental Weavers (ORWE.CA)	7.10	Up-Corr.	—	—	7.10	7.45	6.50	—	—
Other Sectors									
Egyptian Media Production City (MPRC.CA)	6.00	Bearish	—	—	6.00	6.40	—	—	—
Egyptian Transport - Egytrans (ETRS.CA)	11.30	Dn.-Corr.	—	—	11.00	11.70	11.00	—	—
Orascom holding development (ORHD.CA)	5.95	Bullish	6.10	6.45	5.65	6.45	4.70	—	—
United Arab Shipping (UASG.CA)	0.95	Bearish	—	—	0.905	0.98	—	—	—

Disclaimer

- This publication has been prepared by Blom Egypt Securities for information purposes only.
- It is not intended as an offer to buy or sell or a solicitation of an offer to buy or sell the securities mentioned.
- The information & opinions in this publication were prepared by Blom Egypt Securities research department accepts no liability or legal responsibility for losses & damages incurred arising from the use of this publication or its contents.

Blom Egypt Securities
Samir M. Azmi, CFTe, CETA
Senior Technical Analyst
samir.azmi@blomsecurities.com



Guidelines for using BLOM daily Technical Analysis Report

<u>Close:</u>	Is recorded as the last trade in the session.
<u>Trend:</u>	
Bullish :	The strategy is to buy the dips.
Bearish :	The strategy is to sell the rallies.
Flat :	The strategy is to trade the range between the triggers.
Up-Corr. :	A move against the major trend when it is down.
Dn.-Corr. :	A move against the major trend when it is up.
<u>Targets :</u>	Take some profit by reducing a portion of the position whenever a price target is been hit.
<u>Support :</u>	A level below market price (previous lows) where buyers showed strength, in a bull market buy near the support and don't sell on the resistance. A break below the Support is considered to be a bearish sign.
<u>Resistance :</u>	A level above market price (previous highs) where sellers showed strength, in a bear market sell near the resistance level and don't buy on the support. A break above the resistance is considered to be a bullish sign.
<u>Stop Loss :</u>	Must exit the current position whenever the closing price is (1% to 2%) below the stop loss and confirmed by volume.
<u>Triggers :</u>	The range between the lower trigger and the upper is used for trading, break of any of them, the move would continue in the same direction.
<u>Yellow rows:</u>	indication that the stock closed below/above support, stop-loss, or resistance but the break is not confirmed yet.

Disclaimer

- This publication has been prepared by Blom Egypt Securities for information purposes only.
- It is not intended as an offer to buy or sell or a solicitation of an offer to buy or sell the securities mentioned.
- The information & opinions in this publication were prepared by Blom Egypt Securities research department accepts no liability or legal responsibility for losses & damages incurred arising from the use of this publication or its contents.

Blom Egypt Securities
Samir M. Azmi, CFTe, CETA
Senior Technical Analyst
samir.azmi@blomsecurities.com