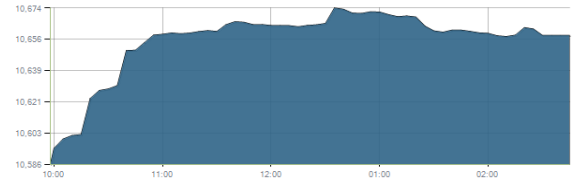




Indices intraday trends

EGX 30

مؤشر EGX 30  
اليوم - 28/12/2020

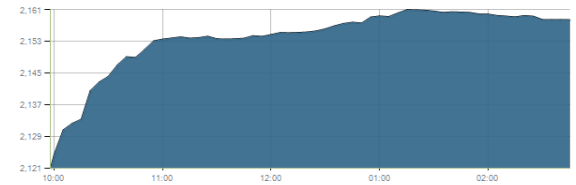


Key Levels

Support 1	10550	Resistance 1	10750
Support 2	10270	Resistance 2	10900-11100

EGX 50 EWI

مؤشر EGX 50 EWI  
اليوم - 28/12/2020

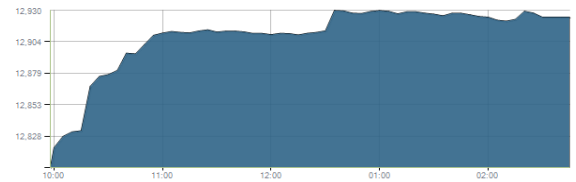


Key Levels

Close		2158.35	
Support 1	2130	Resistance 1	2200
Support 2	1965	Resistance 2	2300

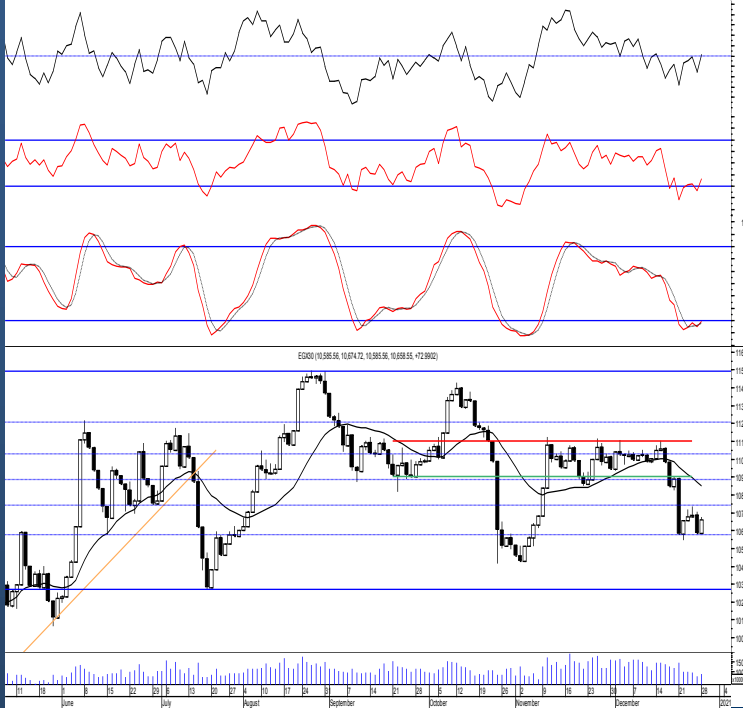
EGX 30 capped

مؤشر EGX 30 Capped  
اليوم - 28/12/2020



Key Levels

Close		12924.29	
Support 1	12790	Resistance 1	13035
Support 2	12460	Resistance 2	13170



Market Commentary:

The EGX30 witnessed a rebounding process from the beginning of the session before reaching the support level 10550 & closing the index near the high. Yet the market still suffers from lack of volumes which as we said increases the risk which in turn indicates that the current move is only a counter move to the recent decline therefore we recommend to watch current levels very carefully. On the other hand any broken stop should be respected and wait for a confirmed positive signal. We overall recommend to stay on cash till a confirmed buy signal is evident. Risk takers who decides holding their positons are advised to keep close stops placed and respected.

Close	10658.55	Trend	Up-Corr.
Pre. Close	10585.56	Target 1	---
Change	↑ 72.99 ( 0.69% )	Target 2	---
Day's range	10585.56 — 10674.72	Stop-loss	10425
52week's high	14831.20	52week's low	8113.82

Disclaimer

- This publication has been prepared by Blom Egypt Securities for information purposes only.
- It is not intended as an offer to buy or sell or a solicitation of an offer to buy or sell the securities mentioned.
- The information & opinions in this publication were prepared by Blom Egypt Securities research department accepts no liability or legal responsibility for losses & damages incurred arising from the use of this publication or its contents.

**Blom Egypt Securities**  
Samir M. Azmi, CFTe, CETA  
Senior Technical Analyst  
samir.azmi@blomsecurities.com

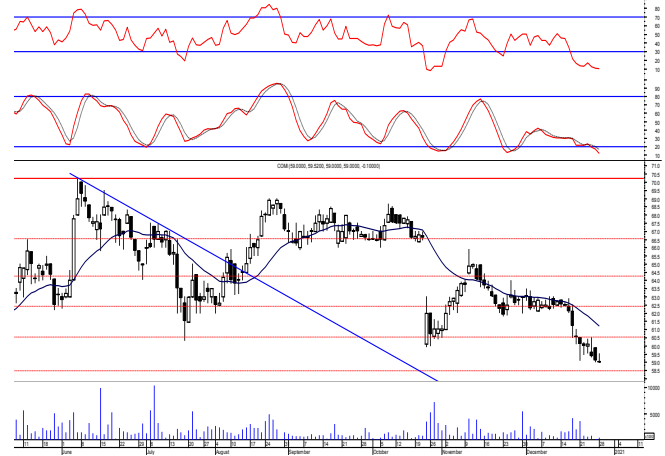


**Commercial international bank (COMI.CA):**

Prices traded narrowly flat closing slightly negative keeping everything in place. Our coming support now is 58.50 which is considered a very important retracement level where we should watch very carefully.

We still recommend traded positions to stay on cash and wait for a confirmed buy signal to react safely on. While held positions are advised to activate their stops and stay on cash.

Support levels: 58.50, 56.20  
Resistance levels: 60.00, 63.00



**Hermes Holding (HRHO.CA):**

Prices closed on the resistance 14.10 after trading above most of the day as selling pressure dominated. Yet, further decline now is expected which will probably reach the support level 13.50.

Buyers strength will be proven by sustaining the mentioned level so we may reopen buying positions targeting the mentioned resistance zone.

Close stops should always be placed and respected to protect the downside.

Support levels: 13.50, 13.20  
Resistance levels: 14.10, 15.25-15.55

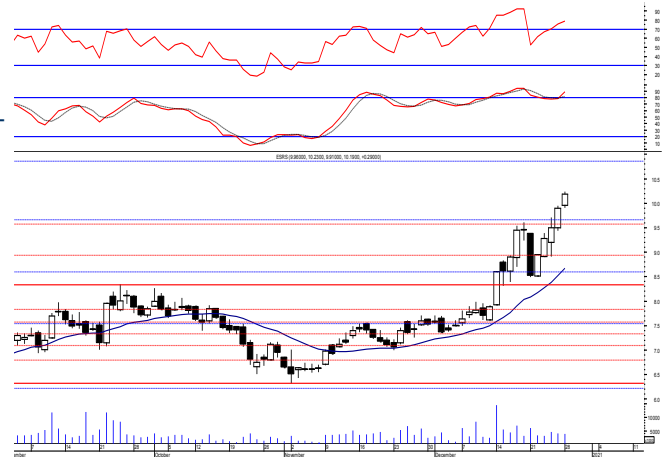


**El-Ezz steel rebar's' (ESRS.CA):**

Prices extended higher as buying process continued closing near the session's high suggesting further climbing. Held positions are advised to hold as strong rally is now expected to the next target and strong resistance level 10.90.

Trailing stop should always be used to protect profits.

Support levels: 9.80, 9.10  
Resistance levels: 10.90, 11.60



**Disclaimer**

- This publication has been prepared by Blom Egypt Securities for information purposes only.
- It is not intended as an offer to buy or sell or a solicitation of an offer to buy or sell the securities mentioned.
- The information & opinions in this publication were prepared by Blom Egypt Securities research department accepts no liability or legal responsibility for losses & damages incurred arising from the use of this publication or its contents.

**Blom Egypt Securities**  
**Samir M. Azmi, CFTe, CETA**  
**Senior Technical Analyst**  
**samir.azmi@blomsecurities.com**



Most active Stocks

Daily Technical Analysis Report

29 Dec, 2020

Stock Name (Reuters' Code)	Close	Trend	T1	T2	Support	Resistance	SL	Triggers	
								Lower	Upper
<b>Building Materials &amp; Construction</b>									
Arabian cement (ARCC.CA)	3.14	Up-Corr.	—	—	3.05	3.17	2.75	—	—
El Ezz Steel Rebar's (ESRS.CA)	10.19	Bullish	10.90	11.60	9.80	10.90	7.55	—	—
Egyptian iron & steel; Co. (IRON.CA)	3.22	Dn.-Corr.	—	—	3.15	3.35	2.80	—	—
GB auto (AUTO.CA)	3.16	Dn.-Corr.	—	—	3.10	3.32	2.80	—	—
Orascom construction (ORAS.CA)	80.00	Bearish	—	—	76.50	81.00	—	—	—
South Valley Cement (SVCE.CA)	1.654	Bearish	—	—	1.50	1.67	—	—	—
Elswedey Cables (SWDY.CA)	8.81	Dn.-Corr.	—	—	8.80	9.40	8.50	—	—
Upper Egypt general contracting (UEGC.CA)	0.755	Up-Corr.	—	—	0.74	0.80	0.74	—	—
<b>Chemicals</b>									
Abu-Qir fertilizers (ABUK.CA)	20.40	Dn.-Corr.	—	—	19.20	20.50	19.20	—	—
Egyptian Financial & Indust. (EFIC.CA)	11.30	Bearish	—	—	11.10	11.90	—	—	—
Egyptian chemical industries-Kima (EGCH.CA)	4.08	Up-Corr.	—	—	3.90	4.25	3.80	—	—
<b>Communications</b>									
Orascom investment holding (OIH.CA)	0.547	Up-Corr.	—	—	0.49	0.555	0.49	—	—
Telecom Egypt (ETEL.CA)	11.41	Up-Corr.	—	—	11.40	11.75	11.40	—	—
<b>Financial Services</b>									
Abu Dhabi International Bank (ADIB.CA)	11.70	Dn.-Corr.	—	—	11.20	12.00	11.20	—	—
Arabian for investments & development (AIH.CA)	0.598	Dn.-Corr.	—	—	0.59	0.645	0.59	—	—
Amer holding group (AMER.CA)	1.07	Dn.-Corr.	—	—	1.07	1.14	0.84	—	—
Commercial International Bank (COMI.CA)	59.00	Bearish	—	—	58.50	60.00	—	—	—
Export development bank of Egypt (EXPA.CA)	13.72	Bearish	—	—	13.10	13.95	—	—	—
<b>Holding Companies</b>									
CI capital holding for financial investments (CICH.CA)	3.95	Up-Corr.	—	—	3.75	4.00	3.55	—	—
Citadel capital (CCAP.CA)	1.403	Up-Corr.	—	—	1.39	1.45	1.39	—	—
Hermes Holding (HRHO.CA)	14.10	Up-Corr.	—	—	13.50	14.10	13.20	—	—
Kuwaiti Holding (EKHO.CA)	1.02	Up-Corr.	—	—	0.97	1.04	0.97	—	—
Pioneers holding (PIOH.CA)	3.77	Up-Corr.	—	—	3.60	3.85	3.60	—	—
<b>Housing &amp; Real Estate</b>									
Egyptian For Tourism Resorts (EGTS.CA)	1.38	Up-Corr.	—	—	1.30	1.42	1.30	—	—
Elshams housing (ELSH.CA)	4.70	Up-Corr.	—	—	4.60	4.75	4.15	—	—
Emaar holding (EMFD.CA)	2.31	Dn.-Corr.	—	—	2.30	2.40	2.13	—	—
Heliopolis housing & development (HELLI.CA)	5.80	Bearish	—	—	5.50	5.90	—	—	—
Medinet Nasr for housing & Deve. (MNHD.CA)	3.71	Up-Corr.	—	—	3.60	3.90	3.45	—	—
6th. October Deve. Inv. (OCDI.CA)	14.90	Bullish	15.75	16.90	14.80	15.75	13.90	—	—
Palm hills development Co. (PHDC.CA)	1.304	Up-Corr.	—	—	1.28	1.33	1.28	—	—
Talaat Mustafa group holding (TMGH.CA)	6.29	Up-Corr.	—	—	6.30	6.55	6.30	—	—
<b>Mining &amp; Gas</b>									
Alexandria Mineral Oils Co. (AMOC.CA)	3.02	Dn.-Corr.	—	—	2.95	3.15	2.75	—	—
Sidi Kerir Petrochemicals (SKPC.CA)	9.06	Dn.-Corr.	—	—	8.55	9.20	8.15	—	—
<b>Textiles &amp; Clothes</b>									
Arab Co. for asset management & Deve. (ACAMD.CA)	5.15	Bearish	—	—	4.90	5.25	—	—	—
Arab cotton ginning (ACGC.CA)	3.21	Up-Corr.	—	—	3.05	3.25	2.85	—	—
Oriental Weavers (ORWE.CA)	6.71	Bearish	—	—	6.50	7.00	—	—	—
<b>Other Sectors</b>									
Egyptian Media Production City (MPRC.CA)	6.21	Up-Corr.	—	—	5.65	6.20	5.40	—	—
Egyptian Transport - Egytrans (ETRS.CA)	10.10	Up-Corr.	—	—	9.70	10.10	9.10	—	—
Orascom holding development (ORHD.CA)	4.50	Dn.-Corr.	—	—	4.45	4.85	4.45	—	—
United Arab Shipping (UASG.CA)	1.062	Up-Corr.	—	—	0.90	1.10	0.90	—	—

Disclaimer

- This publication has been prepared by Blom Egypt Securities for information purposes only.
- It is not intended as an offer to buy or sell or a solicitation of an offer to buy or sell the securities mentioned.
- The information & opinions in this publication were prepared by Blom Egypt Securities research department accepts no liability or legal responsibility for losses & damages incurred arising from the use of this publication or its contents.

**Blom Egypt Securities**  
Samir M. Azmi, CFTe, CETA  
Senior Technical Analyst  
samir.azmi@blomsecurities.com



**Guidelines for using BLOM daily Technical Analysis Report**

<b><u>Close:</u></b>	Is recorded as the last trade in the session.
<b><u>Trend:</u></b>	
<b>Bullish :</b>	The strategy is to buy the dips.
<b>Bearish :</b>	The strategy is to sell the rallies.
<b>Flat :</b>	The strategy is to trade the range between the triggers.
<b>Up-Corr. :</b>	A move against the major trend when it is down.
<b>Dn.-Corr. :</b>	A move against the major trend when it is up.
<b><u>Targets :</u></b>	Take some profit by reducing a portion of the position whenever a price target is been hit.
<b><u>Support :</u></b>	A level below market price (previous lows) where buyers showed strength, in a bull market buy near the support and don't sell on the resistance. A break below the Support is considered to be a bearish sign.
<b><u>Resistance :</u></b>	A level above market price (previous highs) where sellers showed strength, in a bear market sell near the resistance level and don't buy on the support. A break above the resistance is considered to be a bullish sign.
<b><u>Stop Loss :</u></b>	Must exit the current position whenever the closing price is (1% to 2%) below the stop loss and confirmed by volume.
<b><u>Triggers :</u></b>	The range between the lower trigger and the upper is used for trading, break of any of them, the move would continue in the same direction.
<b><u>Yellow rows:</u></b>	indication that the stock closed below/above support, stop-loss, or resistance but the break is not confirmed yet.

**Disclaimer**

- This publication has been prepared by Blom Egypt Securities for information purposes only.
- It is not intended as an offer to buy or sell or a solicitation of an offer to buy or sell the securities mentioned.
- The information & opinions in this publication were prepared by Blom Egypt Securities research department accepts no liability or legal responsibility for losses & damages incurred arising from the use of this publication or its contents.

**Blom Egypt Securities**  
**Samir M. Azmi, CFTe, CETA**  
**Senior Technical Analyst**  
**samir.azmi@blomsecurities.com**