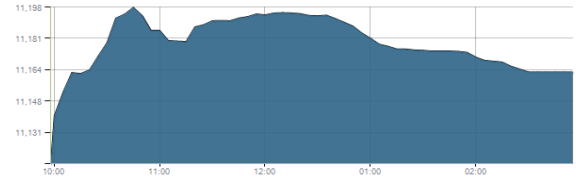




Indices intraday trends

EGX 30

مؤشر EGX 30
اليوم - 30/08/2021

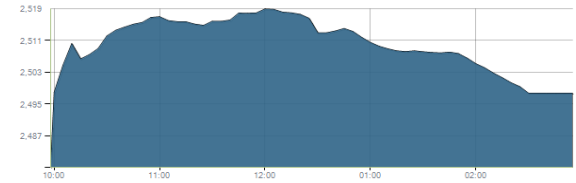


Key Levels

Support 1	10950-10850	Resistance 1	11200
Support 2	10600	Resistance 2	11430

EGX 50 EWI

مؤشر EGX 50 EWI
اليوم - 30/08/2021

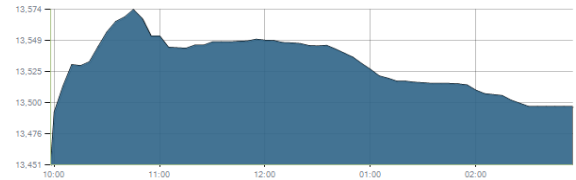


Key Levels

Close		2497.82	
Support 1	2450	Resistance 1	2500
Support 2	2370	Resistance 2	2625

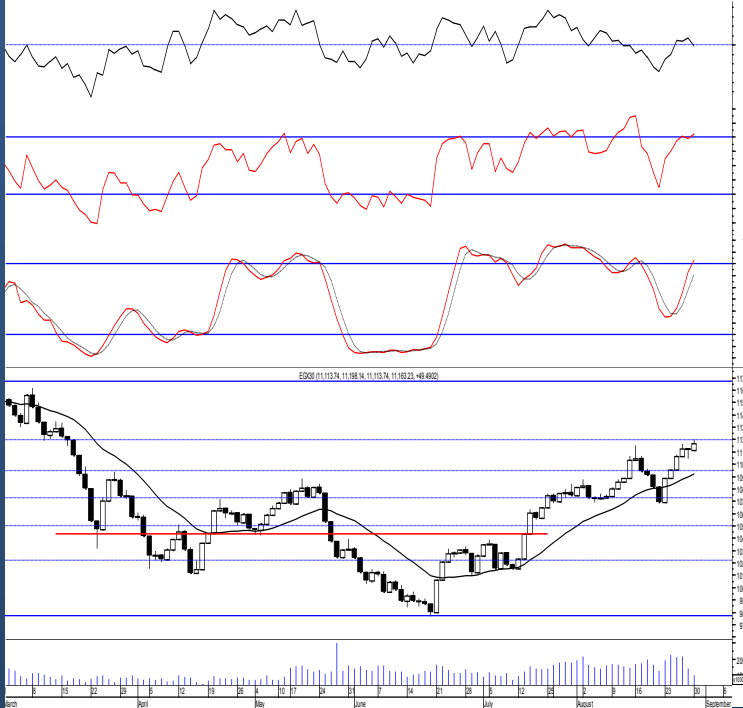
EGX 30 capped

مؤشر EGX 30 Capped
اليوم - 30/08/2021



Key Levels

Close		13497.14	
Support 1	13400	Resistance 1	13800
Support 2	13130	Resistance 2	14140



Market Commentary:

The EGX30 rose higher ahead of trading reaching our expected resistance level 11200 before selling pressure takes place giving back almost 50% of the gains. Trading within both mentioned levels 11200 which as we said acts as resistance and 10950-10850 serving as support is expected where we may trade conservatively. Bear in mind that the move is expected to continue in the direction of the break. Notice that the upside breakout potential is more to be witnessed but should be confirmed by increasing volumes. Existing positions should always keep close stops placed and respected.

Close	11163.23	Trend	Up-Corr.
Pre. Close	11113.74	Target 1	—
Change	↑ 49.49 (0.45%)	Target 2	—
Day's range	11113.74 — 11198.14	Stop-loss	9900
52week's high	11675.69	52week's low	9769.18.18

Disclaimer

- This publication has been prepared by Blom Egypt Securities for information purposes only.
- It is not intended as an offer to buy or sell or a solicitation of an offer to buy or sell the securities mentioned.
- The information & opinions in this publication were prepared by Blom Egypt Securities research department accepts no liability or legal responsibility for losses & damages incurred arising from the use of this publication or its contents.

Blom Egypt Securities
Samir M. Azmi, CFTE, CETA
Senior Technical Analyst
samir.azmi@blomsecurities.com



Commercial international bank (COMI.CA):

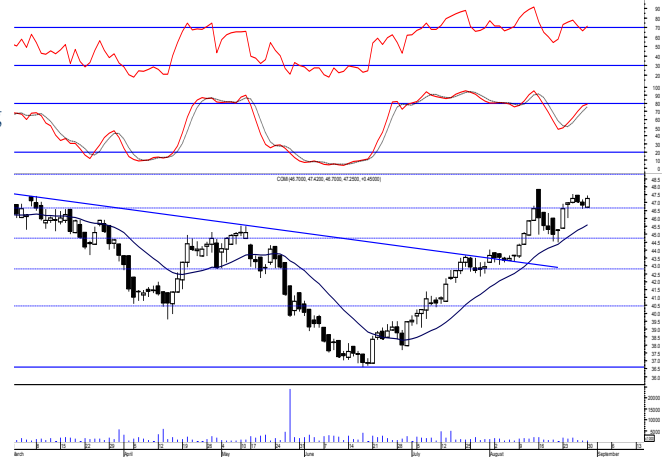
Prices remained narrowly flat as balanced trading performance dominated closing slightly positive keeping everything in place.

New positions could be opened now using the mentioned levels to trade gradually on

Trailing stop strategy should be followed to protect profits and reduce risk

Support levels: 46.65, 44.70

Resistance levels: 48.80, 51.60

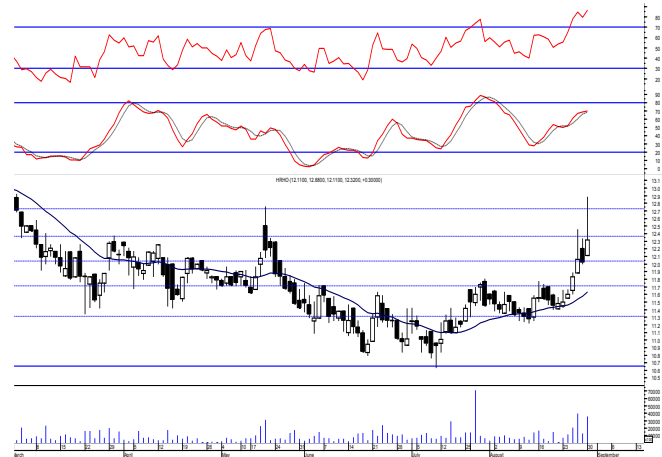


Hermes Holding (HRHO.CA):

Prices witnessed trading above the both mentioned resistance level before selling pressure strongly overwhelms closing above the resistance level 12.10. Trading within the new levels may be tried keeping protective stop below 12.10 which serves now as support. Traded positions are advised to wait for a new signal while existing to hold keeping stops placed and respected below 11.25 as any decline below will give back the hand to selling party.

Support levels: 12.10, 11.70

Resistance levels: (12.60-12.75), (13.25-13.40)



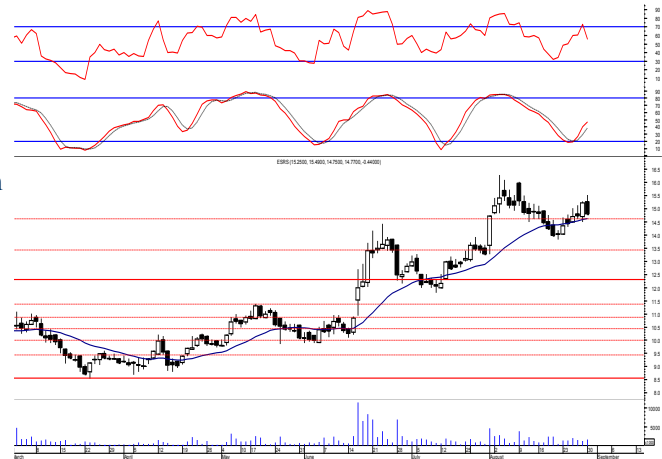
El-Ezz steel rebar's' (ESRS.CA):

Prices witnessed a failure rally attempt ahead of trading as selling pressure strongly took place giving back all the gains closing near the low and within the mentioned support level. watch the mentioned zone only bullish sentiment intact which as we said will likely push prices higher to retest the previous reached high 16.25 where we may use the range for quick trading.

Protective stop should be placed below 14.40.

Support levels: (14.65-14.40), 13.40

Resistance levels: 16.00, 17.70



Disclaimer

- This publication has been prepared by Blom Egypt Securities for information purposes only.
- It is not intended as an offer to buy or sell or a solicitation of an offer to buy or sell the securities mentioned.
- The information & opinions in this publication were prepared by Blom Egypt Securities research department accepts no liability or legal responsibility for losses & damages incurred arising from the use of this publication or its contents.

Blom Egypt Securities
Samir M. Azmi, CFTe, CETA
Senior Technical Analyst
samir.azmi@blomsecurities.com



Most active Stocks

Daily Technical Analysis Report

31 Aug, 2021

Stock Name (Reuters' Code)	Close	Trend	T1	T2	Support	Resistance	SL	Triggers	
								Lower	Upper
Building Materials & Construction									
Arabian cement (ARCC.CA)	5.08	Dn.-Corr.	—	—	5.05	5.30	4.50	—	—
El Ezz Steel Rebar's (ESRS.CA)	14.77	Dn.-Corr.	—	—	14.40	16.00	11.40	—	—
GB auto (AUTO.CA)	3.97	Bullish	4.20√	4.45	3.95	4.20	3.75	—	—
Orascom construction (ORAS.CA)	74.75	Dn.-Corr.	—	—	71.50	74.80	68.50	—	—
South Valley Cement (SVCE.CA)	2.27	Dn.-Corr.	—	—	2.20	2.47	1.95	—	—
Elsweddy Cables (SWDY.CA)	8.70	UP-Corr.	—	—	8.60	9.00	7.40	—	—
Upper Egypt general contracting (UEGC.CA)	0.838	Bullish	0.89	0.93	0.81	0.89	0.73	—	—
Chemicals									
Abu-Qir fertilizers (ABUK.CA)	18.82	Up-Corr.	—	—	18.30	19.70	18.30	—	—
Egyptian Financial & Indust. (EFIC.CA)	14.25	Flat	—	—	—	—	12.85	14.00	15.50
Egyptian chemical industries-Kima (EGCH.CA)	4.72	Dn.-Corr.	4.45√	4.95	4.45	4.95	3.75	—	—
Communications									
Orascom investment holding (OIH.CA)	0.242	Bullish	0.232√	0.257	0.232	0.257	0.192	—	—
Telecom Egypt (ETEL.CA)	14.61	Dn.-Corr.	15.20√	16.60	14.30	15.70	12.90	—	—
Financial Services									
Abu Dhabi International Bank (ADIB.CA)	15.25	Dn.-Corr.	—	—	14.60	15.75	14.60	—	—
Arabian for investments & development (AIH.CA)	0.485	Up-Corr.	—	—	0.48	0.505	0.46	—	—
Amer holding group (AMER.CA)	0.922	Up-Corr.	—	—	0.888	0.945	0.78	—	—
Commercial International Bank (COMI.CA)	47.25	Bullish	46.65√	48.80	46.65	48.80	42.30	—	—
Export development bank of Egypt (EXPA.CA)	11.68	Dn.-Corr.	—	—	11.60	12.50	9.90	—	—
Holding Companies									
Citadel capital (CCAP.CA)	1.269	Up-Corr.	—	—	1.21	1.31	1.09	—	—
Hermes Holding (HRHO.CA)	12.32	Bullish	12.10√	12.70	12.10	12.75	11.25	—	—
Kuwaiti Holding (EKHO.CA)	1.145	Bullish	1.13√	1.19	1.06	1.15	0.96	—	—
MM group for industry & international trade (MTIE.CA)	7.70	Dn.-Corr.	—	—	7.70	8.20	6.50	—	—
Orascom financial holding (OFH.CA)	0.29	Dn.-Corr.	—	—	0.275	0.31	0.275	—	—
Pioneers holding (PIOH.CA)	5.68	Bullish	5.45√	6.10	5.45	6.10	4.80	—	—
Housing & Real Estate									
Egyptian For Tourism Resorts (EGTS.CA)	2.50	Bullish	2.68√	3.05	2.35	2.68	1.95	—	—
Elshams housing (ELSH.CA)	17.55	Bullish	18.30√	20.00√	17.25	18.30	15.00	—	—
Emaar holding (EMFD.CA)	2.50	Up-Corr.	—	—	2.38	2.50	2.12	—	—
Heliopolis housing & development (HELL.CA)	5.79	Bullish	5.55√	5.85√	5.70	6.05	4.85	—	—
Medinet Nasr for housing & Deve. (MNHD.CA)	3.06	Up-Corr.	—	—	3.00	3.25	2.90	—	—
6th. October Deve. Inv. (OCDI.CA)	17.99	Bullish	18.60	19.55	17.90	19.55	15.70	—	—
Palm hills development Co. (PHDC.CA)	1.907	Dn.-Corr.	—	—	1.88	1.96	1.60	—	—
Talaat Mustafa group holding (TMGH.CA)	7.15	Dn.-Corr.	—	—	7.00	7.35	6.30	—	—
Mining & Gas									
Alexandria Mineral Oils Co. (AMOC.CA)	3.68	Dn.-Corr.	—	—	3.60	3.88	3.20	—	—
Sidi Kerir Petrochemicals (SKPC.CA)	10.55	Bearish	—	—	10.25	11.10	—	—	—
Textiles & Clothes									
Arab Co. for asset management & Deve. (ACAMD.CA)	0.622	Up-Corr.	—	—	0.60	0.645	0.60	—	—
Arab cotton ginning (ACGC.CA)	1.92	Up-Corr.	—	—	1.92	2.08	1.70	—	—
Oriental Weavers (ORWE.CA)	8.60	Dn.-Corr.	—	—	8.25	8.65	7.50	—	—
Other Sectors									
Egyptian Media Production City (MPC.CA)	6.52	Dn.-Corr.	—	—	6.10	6.45	5.90	—	—
Egyptian Transport - Egytrans (ETRS.CA)	14.50	Up-Corr.	—	—	13.60	15.00	13.60	—	—
Orascom holding development (ORHD.CA)	5.14	Up-Corr.	—	—	4.95	5.35	4.80	—	—
United Arab Shipping (UASG.CA)	1.30	Dn.-Corr.	—	—	1.21	1.35	1.15	—	—

Disclaimer

- This publication has been prepared by Blom Egypt Securities for information purposes only.
- It is not intended as an offer to buy or sell or a solicitation of an offer to buy or sell the securities mentioned.
- The information & opinions in this publication were prepared by Blom Egypt Securities research department accepts no liability or legal responsibility for losses & damages incurred arising from the use of this publication or its contents.

Blom Egypt Securities
Samir M. Azmi, CFTe, CETA
Senior Technical Analyst
samir.azmi@blomsecurities.com



Guidelines for using BLOM daily Technical Analysis Report

<u>Close:</u>	Is recorded as the last trade in the session.
<u>Trend:</u>	
Bullish :	The strategy is to buy the dips.
Bearish :	The strategy is to sell the rallies.
Flat :	The strategy is to trade the range between the triggers.
Up-Corr. :	A move against the major trend when it is down.
Dn.-Corr. :	A move against the major trend when it is up.
<u>Targets :</u>	Take some profit by reducing a portion of the position whenever a price target is been hit.
<u>Support :</u>	A level below market price (previous lows) where buyers showed strength, in a bull market buy near the support and don't sell on the resistance. A break below the Support is considered to be a bearish sign.
<u>Resistance :</u>	A level above market price (previous highs) where sellers showed strength, in a bear market sell near the resistance level and don't buy on the support. A break above the resistance is considered to be a bullish sign.
<u>Stop Loss :</u>	Must exit the current position whenever the closing price is (1% to 2%) below the stop loss and confirmed by volume.
<u>Triggers :</u>	The range between the lower trigger and the upper is used for trading, break of any of them, the move would continue in the same direction.
<u>Yellow rows:</u>	indication that the stock closed below/above support, stop-loss, or resistance but the break is not confirmed yet.

Disclaimer

- This publication has been prepared by Blom Egypt Securities for information purposes only.
- It is not intended as an offer to buy or sell or a solicitation of an offer to buy or sell the securities mentioned.
- The information & opinions in this publication were prepared by Blom Egypt Securities research department accepts no liability or legal responsibility for losses & damages incurred arising from the use of this publication or its contents.

Blom Egypt Securities
Samir M. Azmi, CFTe, CETA
Senior Technical Analyst
samir.azmi@blomsecurities.com