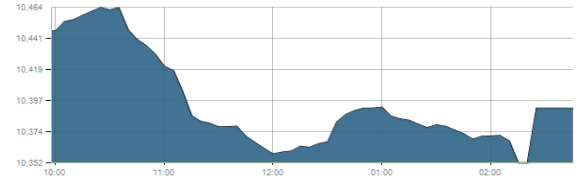




Indices intraday trends

EGX 30

مؤشر EGX 30  
اليوم - 29/09/2021

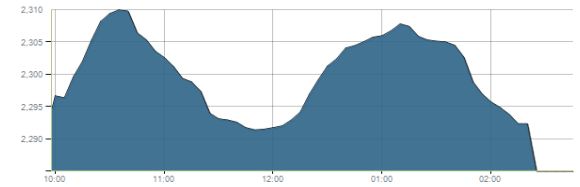


Key Levels

Support 1	10350	Resistance 1	10680
Support 2	10150	Resistance 2	10850-10950

EGX 50 EWI

مؤشر EGX 50 EWI  
اليوم - 29/09/2021

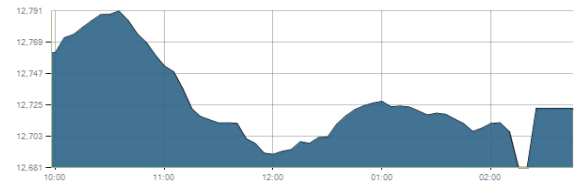


Key Levels

Close		2284.91	
Support 1	2240	Resistance 1	2310
Support 2	2200	Resistance 2	2355

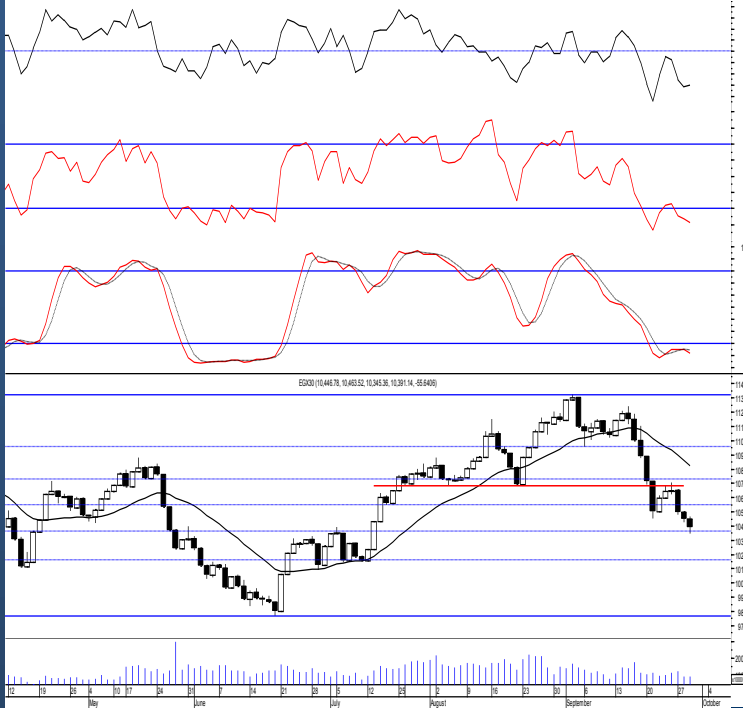
EGX 30 capped

مؤشر EGX 30 Capped  
اليوم - 29/09/2021



Key Levels

Close		12722.91	
Support 1	12630	Resistance 1	12800
Support 2	12500	Resistance 2	12940



Market Commentary:

The EGX30 continued lower as selling process resumed in most of the stocks pulling the index down closing near the low of the day reaching our support level 10350 but as we said, nothing to be done on until clear positive signals shows.

We still recommend staying on cash till a clear reentry signal is clearly given specially that the market risk was elevated by breaking below 10680.

Increasing trading volumes is an important to show on any rebounding attempt to prove real buying strength otherwise any upward move will only be an up correction.

Close	10391.14	Trend	Bearish
Pre. Close	10446.78	Target 1	---
Change	↓ 55.64 ( 0.53% )	Target 2	---
Day's range	10463.52 — 10345.36	Stop-loss	---
52week's high	11675.69	52week's low	9769.18.18

Disclaimer

- This publication has been prepared by Blom Egypt Securities for information purposes only.
- It is not intended as an offer to buy or sell or a solicitation of an offer to buy or sell the securities mentioned.
- The information & opinions in this publication were prepared by Blom Egypt Securities research department accepts no liability or legal responsibility for losses & damages incurred arising from the use of this publication or its contents.

**Blom Egypt Securities**  
Samir M. Azmi, CFTe, CETA  
Senior Technical Analyst  
samir.azmi@blomsecurities.com

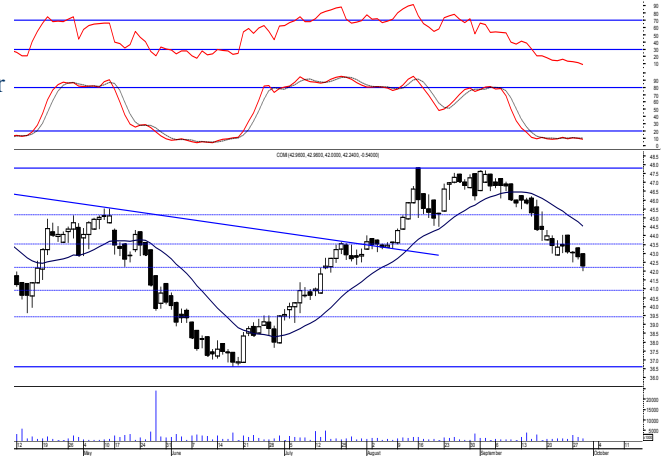


**Commercial international bank (COMI.CA):**

Prices witnessed a downward move closing slightly below our support level 42.30 which still needs confirmation so levels are considered the same and so for our outlook. Yet, we recommend staying on cash & wait for confirmed buy signal so that we can react safely on.

Any existing positions should always keep stops placed and respected

Support levels: 42.30, 40.90  
Resistance levels: 43.50, 44.70

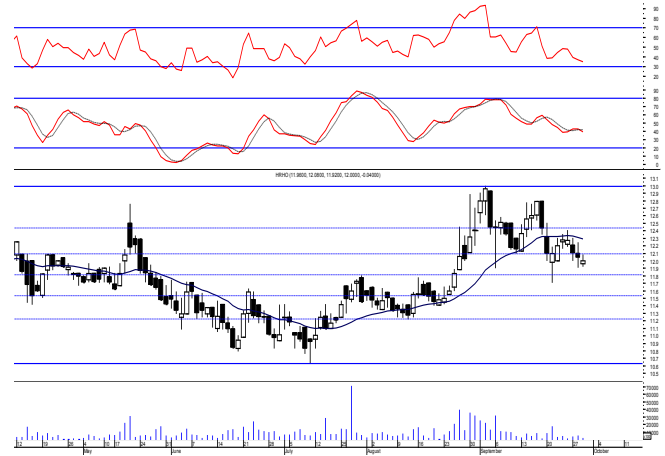


**Hermes Holding (HRHO.CA):**

Prices kept fluctuating around our support level 12.10 closing slightly below which still needs confirmation specially that positive signals are forming on the intraday frame so levels are considered unchanged and so for our outlook.

Existing positions are advised to hold keeping stops placed and respected below 11.25 as any decline below will give back the hand to selling party.

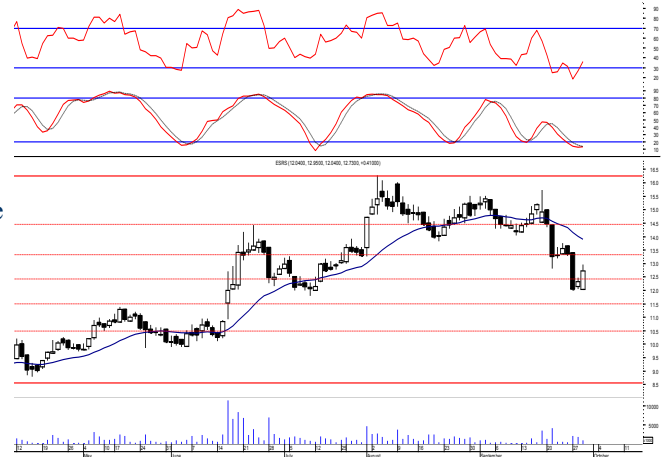
Support levels: 12.10, 11.70  
Resistance levels: (12.60-12.75), (13.25-13.40)



**El-Ezz steel rebar's' (ESRS.CA):**

Prices managed to confirm clearing the resistance level 12.30 turning it into support after trading mostly above and closing near the high. Short term traders may use the new range for short term trades keeping stop placed below the mentioned support while conservatives to wait for all key elements to be clear to react safely on.

Support levels: 12.30, 11.40  
Resistance levels: 13.40, 14.50



**Disclaimer**

- This publication has been prepared by Blom Egypt Securities for information purposes only.
- It is not intended as an offer to buy or sell or a solicitation of an offer to buy or sell the securities mentioned.
- The information & opinions in this publication were prepared by Blom Egypt Securities research department accepts no liability or legal responsibility for losses & damages incurred arising from the use of this publication or its contents.

**Blom Egypt Securities**  
**Samir M. Azmi, CFTe, CETA**  
**Senior Technical Analyst**  
[samir.azmi@blomsecurities.com](mailto:samir.azmi@blomsecurities.com)



Most active Stocks

Daily Technical Analysis Report

30 Sep, 2021

Stock Name (Reuters' Code)	Close	Trend	T1	T2	Support	Resistance	SL	Triggers	
								Lower	Upper
<b>Building Materials &amp; Construction</b>									
Arabian cement (ARCC.CA)	4.10	Bearish	—	—	4.10	4.60	—	—	—
El Ezz Steel Rebar's (ESRS.CA)	12.73	Dn.-Corr.	—	—	12.30	13.40	11.40	—	—
GB auto (AUTO.CA)	4.35	Bullish	4.45	4.75	4.20	4.55	3.75	—	—
Orascom construction (ORAS.CA)	71.11	Dn.-Corr.	—	—	71.00	75.20	68.50	—	—
South Valley Cement (SVCE.CA)	1.82	Bearish	—	—	1.70	1.95	—	—	—
Elswedey Cables (SWDY.CA)	7.87	UP-Corr.	—	—	7.90	8.35	7.90	—	—
Upper Egypt general contracting (UEGC.CA)	0.727	Bearish	—	—	0.672	0.73	—	—	—
<b>Chemicals</b>									
Abu-Qir fertilizers (ABUK.CA)	19.90	Up-Corr.	—	—	19.70	21.00	18.30	—	—
Egyptian Financial & Indust. (EFIC.CA)	13.11	Up-Corr.	—	—	12.60	13.40	12.10	—	—
Egyptian chemical industries-Kima (EGCH.CA)	3.79	Bearish	—	—	3.75	4.00	—	—	—
<b>Communications</b>									
Fawry for banking tech. & electronic payment (FWRY.CA)	14.09	Bearish	—	—	13.60	14.90	—	—	—
Orascom investment holding (OIH.CA)	0.257	Dn.-Corr.	—	—	0.25	0.277	0.215	—	—
Telecom Egypt (ETEL.CA)	14.07	Dn.-Corr.	—	—	13.80	14.30	12.90	—	—
<b>Financial Services</b>									
Abu Dhabi International Bank (ADIB.CA)	14.76	Up-Corr.	—	—	14.80	16.30	12.60	—	—
Arabian for investments & development (AIH.CA)	0.475	Up-Corr.	—	—	0.475	0.515	0.403	—	—
Amer holding group (AMER.CA)	0.771	Up-Corr.	—	—	0.78	0.83	0.78	—	—
Commercial International Bank (COMI.CA)	42.24	Dn.-Corr.	—	—	42.30	43.50	42.30	—	—
Export development bank of Egypt (EXPA.CA)	9.63	Up-Corr.	—	—	9.15	10.00	9.15	—	—
<b>Holding Companies</b>									
Citadel capital (CCAP.CA)	1.122	Up-Corr.	—	—	1.09	1.16	1.09	—	—
Hermes Holding (HRHO.CA)	12.00	Dn.-Corr.	—	—	12.10	12.75	11.25	—	—
Kuwaiti Holding (EKHO.CA)	1.14	Dn.-Corr.	—	—	1.115	1.15	0.96	—	—
MM group for industry & international trade (MTIE.CA)	6.39	Bearish	—	—	6.20	6.70	—	—	—
Orascom financial holding (OFH.CA)	0.245	Bearish	—	—	0.23	0.26	—	—	—
Pioneers holding (PIOH.CA)	5.42	Up-Corr.	—	—	5.45	5.80	5.05	—	—
<b>Housing &amp; Real Estate</b>									
Egyptian For Tourism Resorts (EGTS.CA)	1.80	Bearish	—	—	1.77	1.95	—	—	—
Elshams housing (ELSH.CA)	11.93	Up-Corr.	—	—	10.80	12.10	10.00	—	—
Emaar holding (EMFD.CA)	2.38	Dn.-Corr.	—	—	2.37	2.48	2.28	—	—
Heliopolis housing & development (HELI.CA)	4.89	Dn.-Corr.	—	—	4.85	5.05	4.85	—	—
Medinet Nasr for housing & Deve. (MNHD.CA)	2.60	Bearish	—	—	2.53	2.73	—	—	—
6th. October Deve. Inv. (OCDI.CA)	18.36	Dn.-Corr.	—	—	17.90	18.60	16.90	—	—
Palm hills development Co. (PHDC.CA)	1.90	Dn.-Corr.	—	—	1.90	1.96	1.73	—	—
Talaat Mustafa group holding (TMGH.CA)	7.25	Dn.-Corr.	—	—	6.90	7.50	6.90	—	—
<b>Mining &amp; Gas</b>									
Alexandria Mineral Oils Co. (AMOC.CA)	3.66	Dn.-Corr.	—	—	3.50	3.75	3.20	—	—
Sidi Kerir Petrochemicals (SKPC.CA)	8.75	Bearish	—	—	8.65	9.30	—	—	—
<b>Textiles &amp; Clothes</b>									
Arab Co. for asset management & Deve. (ACAMD.CA)	0.567	Up-Corr.	—	—	0.57	0.62	0.54	—	—
Arab cotton ginning (ACGC.CA)	1.70	Up-Corr.	—	—	1.70	1.78	1.70	—	—
Oriental Weavers (ORWE.CA)	8.56	Dn.-Corr.	—	—	8.55	8.90	7.50	—	—
<b>Other Sectors</b>									
Egyptian Media Production City (MPRC.CA)	5.33	Bearish	—	—	5.04	5.60	—	—	—
Egyptian Transport - Egytrans (ETRS.CA)	13.00	Bearish	—	—	12.45	13.60	—	—	—
Orascom holding development (ORHD.CA)	4.76	Up-Corr.	—	—	4.64	4.85	4.64	—	—
United Arab Shipping (UASG.CA)	1.109	Bearish	—	—	1.09	1.15	—	—	—

Disclaimer

- This publication has been prepared by Blom Egypt Securities for information purposes only.
- It is not intended as an offer to buy or sell or a solicitation of an offer to buy or sell the securities mentioned.
- The information & opinions in this publication were prepared by Blom Egypt Securities research department accepts no liability or legal responsibility for losses & damages incurred arising from the use of this publication or its contents.

**Blom Egypt Securities**  
Samir M. Azmi, CFTe, CETA  
Senior Technical Analyst  
samir.azmi@blomsecurities.com



**Guidelines for using BLOM daily Technical Analysis Report**

<b><u>Close:</u></b>	Is recorded as the last trade in the session.
<b><u>Trend:</u></b>	
<b>Bullish :</b>	The strategy is to buy the dips.
<b>Bearish :</b>	The strategy is to sell the rallies.
<b>Flat :</b>	The strategy is to trade the range between the triggers.
<b>Up-Corr. :</b>	A move against the major trend when it is down.
<b>Dn.-Corr. :</b>	A move against the major trend when it is up.
<b><u>Targets :</u></b>	Take some profit by reducing a portion of the position whenever a price target is been hit.
<b><u>Support :</u></b>	A level below market price (previous lows) where buyers showed strength, in a bull market buy near the support and don't sell on the resistance. A break below the Support is considered to be a bearish sign.
<b><u>Resistance :</u></b>	A level above market price (previous highs) where sellers showed strength, in a bear market sell near the resistance level and don't buy on the support. A break above the resistance is considered to be a bullish sign.
<b><u>Stop Loss :</u></b>	Must exit the current position whenever the closing price is (1% to 2%) below the stop loss and confirmed by volume.
<b><u>Triggers :</u></b>	The range between the lower trigger and the upper is used for trading, break of any of them, the move would continue in the same direction.
<b><u>Yellow rows:</u></b>	indication that the stock closed below/above support, stop-loss, or resistance but the break is not confirmed yet.

**Disclaimer**

- This publication has been prepared by Blom Egypt Securities for information purposes only.
- It is not intended as an offer to buy or sell or a solicitation of an offer to buy or sell the securities mentioned.
- The information & opinions in this publication were prepared by Blom Egypt Securities research department accepts no liability or legal responsibility for losses & damages incurred arising from the use of this publication or its contents.

**Blom Egypt Securities**  
**Samir M. Azmi, CFTe, CETA**  
**Senior Technical Analyst**  
**samir.azmi@blomsecurities.com**