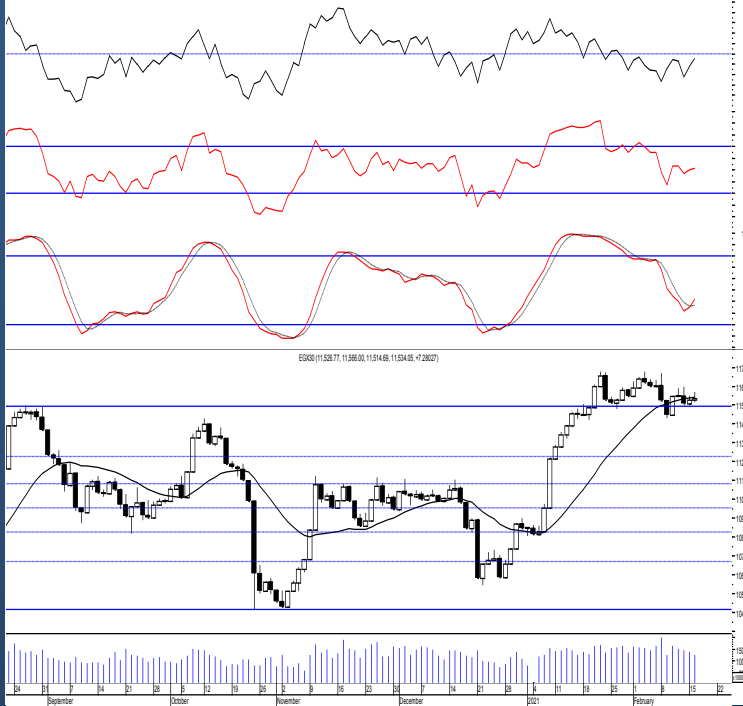




Egypt | EGX 30

Daily Technical Analysis Report

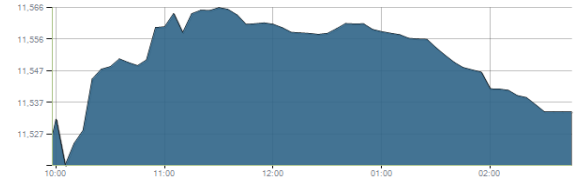
17 Feb, 2021



Indices intraday trends

EGX 30

مؤشر EGX 30  
اليوم - 16/02/2021

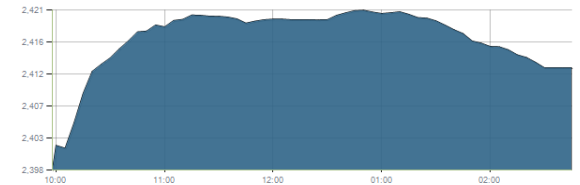


Key Levels

Support 1	11500-11450	Resistance 1	11850
Support 2	11230	Resistance 2	12200

EGX 50 EWI

مؤشر EGX 50 EWI  
اليوم - 16/02/2021

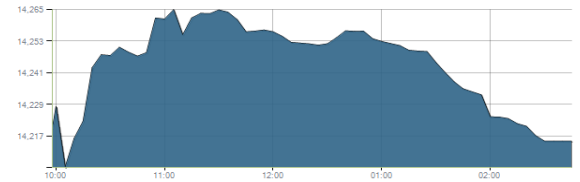


Key Levels

Close		2412.69	
Support 1	2360	Resistance 1	2430
Support 2	2300	Resistance 2	2600

EGX 30 capped

مؤشر EGX 30 Capped  
اليوم - 16/02/2021



Key Levels

Close		14215.38	
Support 1	14200	Resistance 1	14750
Support 2	13850	Resistance 2	15400

Market Commentary:

The EGX30 remained narrowly flat closing slightly positive after quiet trading performance in most of the stocks keeping levels unchanged and so for our outlook where as we said it's highly recommended to watch. Trading volumes remained on the buyers favor suggesting that the market is still able to defend the mentioned support.

As we said, by managing to defend the mentioned support zone our target levels are 11850 & 12200.

Failing to defend this zone will keep the market under further stress and lower levels will be expected.

Close	11534.05	Trend	Bullish
Pre. Close	11526.77	Target 1	11450 ✓
Change	↑ 7.28 ( 0.06% )	Target 2	11850
Day's range	11514.69 — 11566.00	Stop-loss	11230
52week's high	14831.20	52week's low	8113.82

Disclaimer

- This publication has been prepared by Blom Egypt Securities for information purposes only.
- It is not intended as an offer to buy or sell or a solicitation of an offer to buy or sell the securities mentioned.
- The information & opinions in this publication were prepared by Blom Egypt Securities research department accepts no liability or legal responsibility for losses & damages incurred arising from the use of this publication or its contents.

**Blom Egypt Securities**  
Samir M. Azmi, CFTe, CETA  
Senior Technical Analyst  
samir.azmi@blomsecurities.com



**Commercial international bank (COMI.CA):**

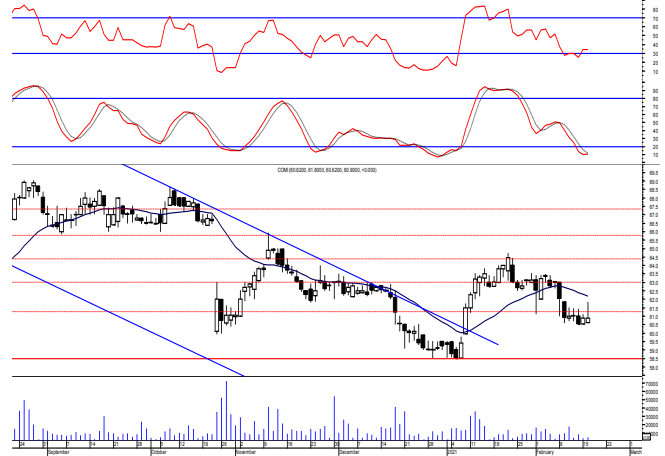
Prices remained narrowly flat closing with no change keeping levels the same and so for our outlook.

As we said, ignoring the recent strength evident on technical indicators is considered a negative sign indicating that bears are gaining control so it's highly recommended to watch current levels.

Protective stop should be placed below 60.00.

Support levels: 60.00, 58.50

Resistance levels: 63.00, 64.50



**Hermes Holding (HRHO.CA):**

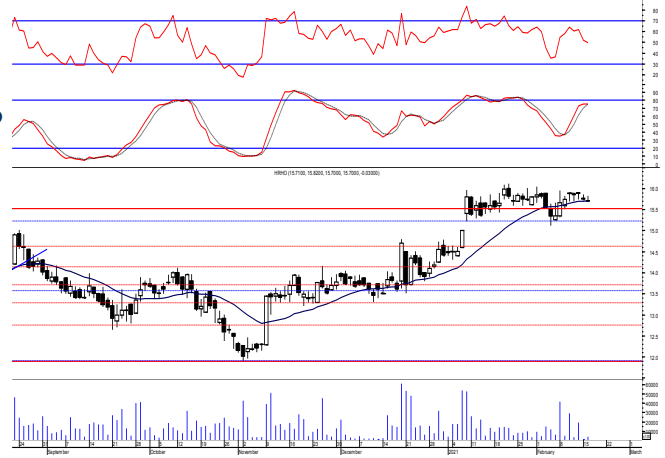
Prices closed slightly negative after quiet balanced trading keeping everything in place. Notice that it is very important to defend the mentioned zone to prove that buyers are still in control.

New target zone within 16.60-17.10 where we believe it represents strong retracement level where may use trade on.

Close stops should always be placed and respected to protect the downside.

Support levels: 15.55-15.25, 14.60

Resistance levels: 16.60-17.10, 17.80



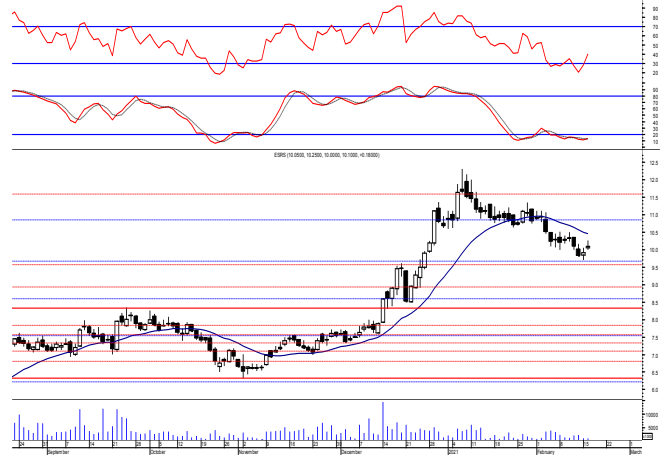
**El-Ezz steel rebar's' (ESRS.CA):**

Prices remained narrowly flat closing slightly positive as balanced trading performance dominated leaving everything in place.

As we said, we may close our sold positions after the violation of 10.60 bearing in mind that any violation to the mentioned support will keep prices under further stress and lower levels will be expected.

Support levels: 9.80, 8.90

Resistance levels: 10.60, 10.90



**Disclaimer**

- This publication has been prepared by Blom Egypt Securities for information purposes only.
- It is not intended as an offer to buy or sell or a solicitation of an offer to buy or sell the securities mentioned.
- The information & opinions in this publication were prepared by Blom Egypt Securities research department accepts no liability or legal responsibility for losses & damages incurred arising from the use of this publication or its contents.

**Blom Egypt Securities**  
**Samir M. Azmi, CFTe, CETA**  
**Senior Technical Analyst**  
[samir.azmi@blomsecurities.com](mailto:samir.azmi@blomsecurities.com)



بلوم مصر لتداول الأوراق المالية

BLOM EGYPT SECURITIES



Most active Stocks

Daily Technical Analysis Report

17 Feb, 2021

Stock Name (Reuters' Code)	Close	Trend	T1	T2	Support	Resistance	SL	Triggers	
								Lower	Upper
<b>Building Materials &amp; Construction</b>									
Arabian cement (ARCC.CA)	3.26	Dn.-Corr.	—	—	3.17	3.40	3.00	—	—
El Ezz Steel Rebar's (ESRS.CA)	10.10	Bearish	—	—	9.80	10.60	—	—	—
GB auto (AUTO.CA)	3.85	Dn.-Corr.	—	—	3.75	3.97	3.48	—	—
Orascom construction (ORAS.CA)	95.00	Dn.-Corr.	—	—	93.00	96.00	81.00	—	—
South Valley Cement (SVCE.CA)	2.04	Bullish	2.18	2.40	2.00	2.18	1.84	—	—
Elsweddy Cables (SWDY.CA)	9.82	Dn.-Corr.	—	—	9.60	10.15	9.60	—	—
Upper Egypt general contracting (UEGC.CA)	1.097	Dn.-Corr.	—	—	1.09	1.18	0.995	—	—
<b>Chemicals</b>									
Abu-Qir fertilizers (ABUK.CA)	21.31	Dn.-Corr.	—	—	20.60	21.70	19.20	—	—
Egyptian Financial & Indust. (EFIC.CA)	11.80	Up-Corr.	—	—	11.85	12.80	11.10	—	—
Egyptian chemical industries-Kima (EGCH.CA)	4.16	Up-Corr.	—	—	4.00	4.25	3.80	—	—
<b>Communications</b>									
Orascom investment holding (OIH.CA)	N/A	Bullish	0.64√	0.68	0.64	0.68	0.55	—	—
Telecom Egypt (ETEL.CA)	11.48	Up-Corr.	—	—	11.40	11.90	11.40	—	—
<b>Financial Services</b>									
Abu Dhabi International Bank (ADIB.CA)	12.25	Dn.-Corr.	—	—	12.00	12.40	11.20	—	—
Arabian for investments & development (AIH.CA)	0.70	Dn.-Corr.	—	—	0.68	0.71	0.59	—	—
Amer holding group (AMER.CA)	1.18	Dn.-Corr.	—	—	1.14	1.25	0.98	—	—
Commercial International Bank (COMI.CA)	60.90	Up-Corr.	—	—	60.00	63.00	58.50	—	—
Export development bank of Egypt (EXPA.CA)	13.73	Up-Corr.	—	—	13.30	14.00	13.30	—	—
<b>Holding Companies</b>									
CI capital holding for financial investments (CICH.CA)	4.60	Bullish	4.87	5.25	4.45	4.87	4.15	—	—
Citadel capital (CCAP.CA)	1.54	Up-Corr.	—	—	1.53	1.60	1.39	—	—
Hermes Holding (HRHO.CA)	15.70	Bullish	16.60	17.80	15.20	17.10	14.60	—	—
Kuwaiti Holding (EKHO.CA)	1.145	Up-Corr.	—	—	1.09	1.18	0.94	—	—
MM group for industry & international trade (MTIE.CA)	10.51	Bullish	10.80√	11.40	10.00	10.80	8.70	—	—
Pioneers holding (PIOH.CA)	5.68	Bullish	5.95	6.30	5.40	5.95	4.45	—	—
<b>Housing &amp; Real Estate</b>									
Egyptian For Tourism Resorts (EGTS.CA)	1.52	Up-Corr.	—	—	1.51	1.60	1.45	—	—
Elshams housing (ELSH.CA)	5.17	Dn.-Corr.	—	—	5.05	5.35	4.85	—	—
Emaar holding (EMFD.CA)	2.53	Dn.-Corr.	—	—	2.45	2.65	2.45	—	—
Heliopolis housing & development (HELL.CA)	5.82	Up-Corr.	—	—	5.50	5.90	5.50	—	—
Medinet Nasr for housing & Deve. (MNHD.CA)	3.82	Up-Corr.	—	—	3.80	3.97	3.75	—	—
6th. October Deve. Inv. (OCDI.CA)	15.70	Flat	—	—	—	—	13.90	15.15	16.20
Palm hills development Co. (PHDC.CA)	1.79	Bullish	1.86	2.00	1.70	1.86	1.53	—	—
Talaat Mustafa group holding (TMGH.CA)	7.09	Dn.-Corr.	—	—	7.00	7.30	6.30	—	—
<b>Mining &amp; Gas</b>									
Alexandria Mineral Oils Co. (AMOC.CA)	3.28	Dn.-Corr.	—	—	3.13	3.37	3.00	—	—
Sidi Kerir Petrochemicals (SKPC.CA)	10.29	Dn.-Corr.	—	—	9.80	10.60	9.20	—	—
<b>Textiles &amp; Clothes</b>									
Arab Co. for asset management & Deve. (ACAMD.CA)	N/A	Up-Corr.	—	—	1.15	1.20	1.07	—	—
Arab cotton ginning (ACGC.CA)	3.24	Up-Corr.	—	—	3.20	3.45	2.85	—	—
Oriental Weavers (ORWE.CA)	6.94	Up-Corr.	—	—	6.50	7.00	6.50	—	—
<b>Other Sectors</b>									
Egyptian Media Production City (MPRC.CA)	8.00	Up-Corr.	—	—	7.45	8.20	5.40	—	—
Egyptian Transport - Egytrans (ETRS.CA)	11.28	Dn.-Corr.	—	—	11.00	11.60	10.40	—	—
Orascom holding development (ORHD.CA)	4.85	Dn.-Corr.	—	—	4.85	5.35	4.45	—	—
United Arab Shipping (UASG.CA)	1.21	Dn.-Corr.	—	—	1.15	1.23	1.05	—	—

Disclaimer

- This publication has been prepared by Blom Egypt Securities for information purposes only.
- It is not intended as an offer to buy or sell or a solicitation of an offer to buy or sell the securities mentioned.
- The information & opinions in this publication were prepared by Blom Egypt Securities research department accepts no liability or legal responsibility for losses & damages incurred arising from the use of this publication or its contents.

**Blom Egypt Securities**  
**Samir M. Azmi, CFTe, CETA**  
**Senior Technical Analyst**  
**samir.azmi@blomsecurities.com**



**Guidelines for using BLOM daily Technical Analysis Report**

**Close:**

Is recorded as the last trade in the session.

**Trend:**

**Bullish :**

The strategy is to buy the dips.

**Bearish :**

The strategy is to sell the rallies.

**Flat :**

The strategy is to trade the range between the triggers.

**Up-Corr. :**

A move against the major trend when it is down.

**Dn.-Corr. :**

A move against the major trend when it is up.

**Targets :**

Take some profit by reducing a portion of the position whenever a price target is been hit.

**Support :**

A level below market price (previous lows) where buyers showed strength, in a bull market buy near the support and don't sell on the resistance. A break below the Support is considered to be a bearish sign.

**Resistance :**

A level above market price (previous highs) where sellers showed strength, in a bear market sell near the resistance level and don't buy on the support. A break above the resistance is considered to be a bullish sign.

**Stop Loss :**

Must exit the current position whenever the closing price is (1% to 2%) below the stop loss and confirmed by volume.

**Triggers :**

The range between the lower trigger and the upper is used for trading, break of any of them, the move would continue in the same direction.

**Yellow rows:**

indication that the stock closed below/above support, stop-loss, or resistance but the break is not confirmed yet.

**Disclaimer**

- This publication has been prepared by Blom Egypt Securities for information purposes only.
- It is not intended as an offer to buy or sell or a solicitation of an offer to buy or sell the securities mentioned.
- The information & opinions in this publication were prepared by Blom Egypt Securities research department accepts no liability or legal responsibility for losses & damages incurred arising from the use of this publication or its contents.

**Blom Egypt Securities**  
**Samir M. Azmi, CFTe, CETA**  
**Senior Technical Analyst**  
**samir.azmi@blomsecurities.com**