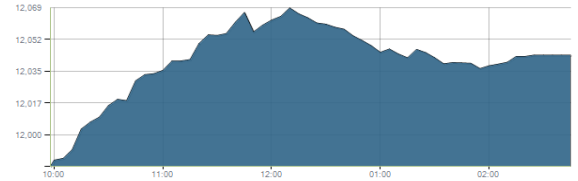


Indices intraday trends

EGX 30

مؤشر EGX 30  
اليوم - 05/01/2022

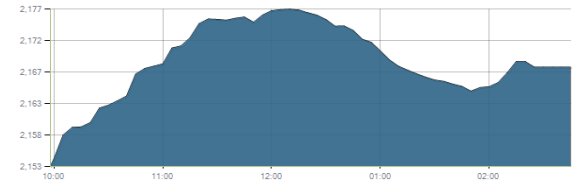


Key Levels

Support 1	11900	Resistance 1	12250
Support 2	11675	Resistance 2	12850

EGX 50 EWI

مؤشر EGX 50 EWI  
اليوم - 05/01/2022

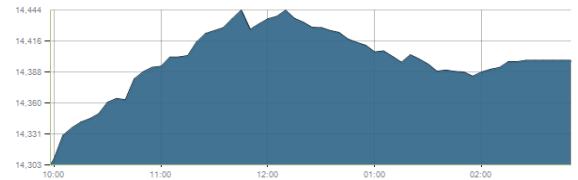


Key Levels

Close		2168.12	
Support 1	2150	Resistance 1	2210
Support 2	2060	Resistance 2	2290

EGX 30 capped

مؤشر EGX 30 Capped  
اليوم - 05/01/2022



Key Levels

Close		14398.35	
Support 1	14325	Resistance 1	14750
Support 2	14150	Resistance 2	15000

Market Commentary:

The EGX30 inched higher approaching our 2nd target level 12070 before balanced trading performance dominates before hitting it closing within the same range leaving everything in place. Yet, the rally is still expected to resume to the second target level where we may use for short term trading. As we said, medium term targets now 12250 & 12850, while short term, targets will be 11900 & 12070. We recommend to be conservative and very selective keeping close stops placed and respected to reduce market risk. Notice that any retreating below 11675 will put the market under stress leading to further decline due to lack of confidence so stay alerted and disciplined.

Close	12043.42	Trend	Targets
Pre. Close	11982.61	Target 1	11900 ✓
Change	↑ 60.81 ( 0.51% )	Target 2	12070
Day's range	11980.87 — 12069.23	Stop-loss	11200
52week's high	11959.66	52week's low	9769.18.18

Disclaimer

- This publication has been prepared by Blom Egypt Securities for information purposes only.
- It is not intended as an offer to buy or sell or a solicitation of an offer to buy or sell the securities mentioned.
- The information & opinions in this publication were prepared by Blom Egypt Securities research department accepts no liability or legal responsibility for losses & damages incurred arising from the use of this publication or its contents.

**Blom Egypt Securities**  
Samir M. Azmi, CFTe, CETA  
Senior Technical Analyst  
samir.azmi@blomsecurities.com

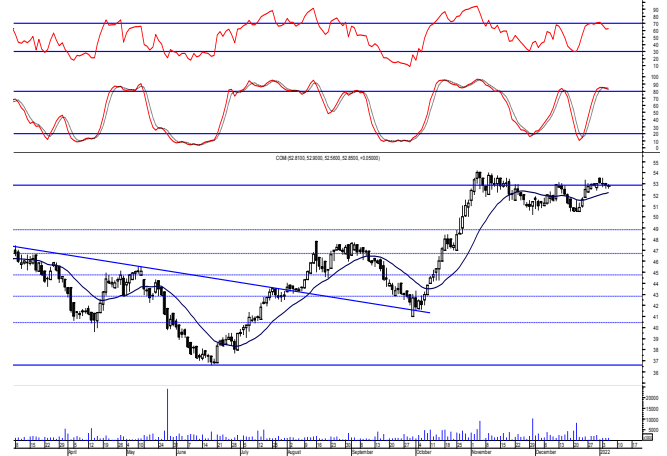


**Commercial international bank (COMI.CA):**

Prices remained narrowly flat closing slightly positive above the support level 52.80 after fluctuating mostly around keeping the bullish sentiment intact which as we said supports our expectations that further climbing will likely follow to the previous reached high 54.15.

possible trades could be tried on current levels, bearing in mind that clearing the previous reached high will confirm the existing bullish sentiment setting new target levels.

Support levels: 52.80, 51.60  
Resistance levels: 54.15, 56.00

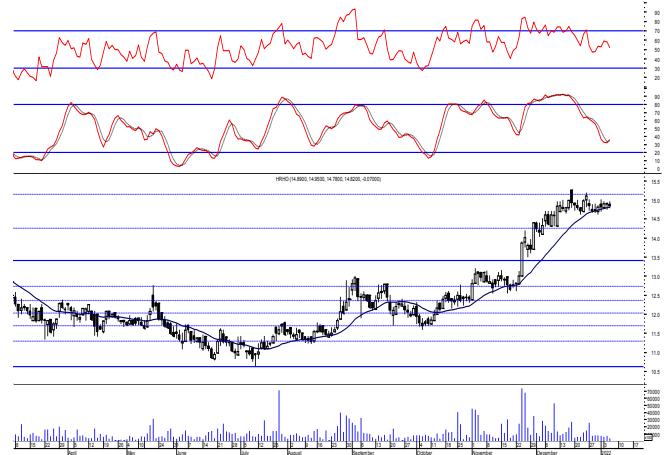


**Hermes Holding (HRHO.CA):**

Prices remained flat within the same range closing slightly positive leaving everything in place. Further climbing will likely follow to the previous reached high where we may use the range for short term trading

We recommended to trade on the mentioned target, now we recommend to stay on cash till a confirmed buy signal is clear. Held positions are advised to keep protective stop placed and respected below 14.45.

Support levels: 14.45, 13.40  
Resistance levels: 16.35, 17.40

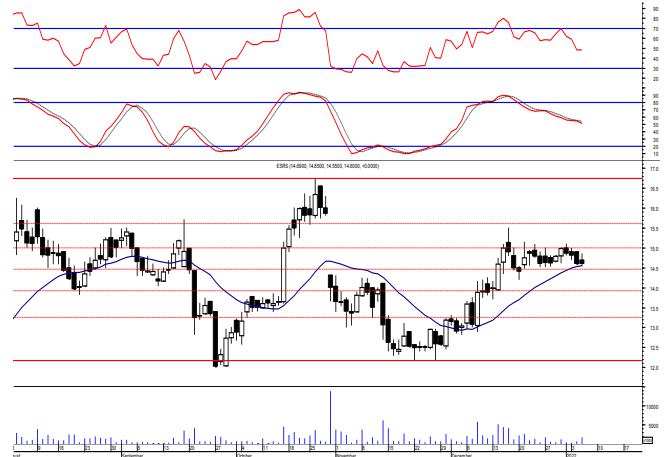


**El-Ezz steel rebar's' (ESRS.CA):**

Prices remained narrowly flat as quiet trading performance remained dominating most of the session closing with no change above the support level 14.50 leaving everything in place.

Yet, it's recommended to stay on cash and wait for a confirmed buy signal to react safely on.

Support levels: 13.80, 13.20  
Resistance levels: 14.50, 15.65



**Disclaimer**

- This publication has been prepared by Blom Egypt Securities for information purposes only.
- It is not intended as an offer to buy or sell or a solicitation of an offer to buy or sell the securities mentioned.
- The information & opinions in this publication were prepared by Blom Egypt Securities research department accepts no liability or legal responsibility for losses & damages incurred arising from the use of this publication or its contents.

**Blom Egypt Securities**  
**Samir M. Azmi, CFTe, CETA**  
**Senior Technical Analyst**  
**samir.azmi@blomsecurities.com**



Most active Stocks

Daily Technical Analysis Report

9 Jan, 2022

Stock Name (Reuters' Code)	Close	Trend	T1	T2	Support	Resistance	SL	Triggers	
								Lower	Upper
<b>Building Materials &amp; Construction</b>									
Arabian Cement (ARCC.CA)	4.65	Bullish	4.60√	4.90	4.35	4.70	3.60	---	
GB Auto (AUTO.CA)	4.98	Bullish	5.30	5.75	4.95	5.30	4.35	---	
El Ezz Steel Rebar's (ESRS.CA)	14.60	Up-Corr.	---	---	14.50	15.65	13.20	---	
Orascom Construction (ORAS.CA)	77.99	Dn.-Corr.	---	---	77.00	79.90	68.50	---	
South Valley Cement (SVCE.CA)	1.568	Bullish	1.58√	1.70	1.47	1.58	1.36	---	
Elswedey Cables (SWDY.CA)	9.94	Bullish	9.70√	10.25	9.40	10.25	8.60	---	
Upper Egypt General Contracting (UEGC.CA)	0.715	Bullish	0.74	0.78	0.685	0.74	0.639	---	
<b>Chemicals</b>									
Abu-Qir Fertilizers (ABUK.CA)	21.49	Up-Corr.	---	---	20.50	21.70	17.90	---	
Egyptian Financial & Indust. (EFIC.CA)	13.52	Up-Corr.	---	---	12.50	13.70	11.40	---	
Egyptian Chemical Industries-Kima (EGCH.CA)	3.90	Up-Corr.	---	---	3.80	4.10	3.00	---	
<b>Communications</b>									
Telecom Egypt (ETEL.CA)	17.15	Bullish	18.30	19.25	16.60	18.30	14.70	---	
Fawry For Banking Tech. & Electronic Payment (FWRY.CA)	12.95	Up-Corr.	---	---	12.30	13.60	11.80	---	
Orascom Investment Holding (OIH.CA)	0.238	Up-Corr.	---	---	0.23	0.26	0.20	---	
<b>Financial Services</b>									
Abu Dhabi International Bank (ADIB.CA)	15.90	Up-Corr.	---	---	15.50	16.10	12.60	---	
Arabian For Investments & Development (AIH.CA)	0.393	Bullish	0.397√	0.425	0.37	0.397	0.35	---	
Amer Holding Group (AMER.CA)	0.99	Up-Corr.	---	---	0.945	1.00	0.85	---	
Credit Agricole (CIEB.CA)	8.40	Bullish	8.45√	9.15	7.80	8.45	6.80	---	
Commercial International Bank (COMI.CA)	52.85	Dn.-Corr.	---	---	52.80	54.15	46.60	---	
Export Development Bank Of Egypt (EXPA.CA)	9.32	Up-Corr.	---	---	9.15	9.70	8.60	---	
<b>Holding Companies</b>									
B Investments Holdings (BINV.CA)	11.25	Up-Corr.	---	---	11.00	12.20	9.80	---	
Citadel Capital (CCAP.CA)	1.263	Up-Corr.	---	---	1.23	1.305	1.09	---	
Kuwaiti Holding (EKHO.CA)	1.41	Dn.-Corr.	---	---	1.355	1.405	1.22	---	
Hermes Holding (HRHO.CA)	14.82	Bullish	14.25√	15.20√	14.45	15.20	11.25	---	
MM Group For Industry & International Trade (MTIE.CA)	7.58	Bullish	7.60√	8.10	7.15	7.60	6.60	---	
Orascom Financial Holding (OFH.CA)	0.234	Up-Corr.	---	---	0.228	0.236	0.208	---	
<b>Housing &amp; Real Estate</b>									
Egyptian For Tourism Resorts (EGTS.CA)	1.554	Up-Corr.	---	---	1.44	1.63	1.23	---	
El-shams Housing (ELSH.CA)	8.49	Up-Corr.	---	---	8.30	9.30	7.40	---	
Emaar Holding (EMFD.CA)	3.08	Bullish	3.00√	3.20	2.80	3.10	2.70	---	
Heliopolis Housing & Development (HELI.CA)	6.80	Dn.-Corr.	---	---	6.30	6.90	6.30	---	
Medinet Nasr For Housing & Deve. (MNHD.CA)	3.07	Up-Corr.	---	---	2.90	3.05	2.52	---	
Palm Hills Development Co. (PHDC.CA)	1.985	Up-Corr.	---	---	1.94	2.00	1.72	---	
Talaat Mustafa Group Holding (TMGH.CA)	9.20	Bullish	9.55	10.05	8.90	10.05	7.60	---	
<b>Mining &amp; Gas</b>									
Alexandria Mineral Oils Co. (AMOC.CA)	3.90	Bullish	4.05	4.20	3.80	4.05	3.33	---	
Sidi Kerir Petrochemicals (SKPC.CA)	7.88	Up-Corr.	---	---	7.70	8.10	6.30	---	
<b>Textiles &amp; Clothes</b>									
Arab Co. For Asset Management & Deve. (ACAMD.CA)	0.527	Up-Corr.	---	---	0.50	0.565	0.42	---	
Arab Cotton Ginning (ACGC.CA)	1.78	Up-Corr.	---	---	1.65	1.81	1.455	---	
Oriental Weavers (ORWE.CA)	8.61	Dn.-Corr.	---	---	8.40	8.75	7.50	---	
<b>Other Sectors</b>									
Egyptian Media Production City (MPRC.CA)	6.34	Up-Corr.	---	---	6.00	6.40	4.80	---	
Orascom Holding Development (ORHD.CA)	5.71	Up-Corr.	---	---	5.55	5.80	5.15	---	
Delta Sugar (SUGR.CA)	15.50	Up-Corr.	---	---	15.30	17.00	13.30	---	
United Arab Shipping (UASG.CA)	1.00	Up-Corr.	---	---	0.975	1.04	0.80	---	

Disclaimer

- This publication has been prepared by Blom Egypt Securities for information purposes only.
- It is not intended as an offer to buy or sell or a solicitation of an offer to buy or sell the securities mentioned.
- The information & opinions in this publication were prepared by Blom Egypt Securities research department accepts no liability or legal responsibility for losses & damages incurred arising from the use of this publication or its contents.

**Blom Egypt Securities**  
Samir M. Azmi, CFTe, CETA  
Senior Technical Analyst  
samir.azmi@blomsecurities.com



### Guidelines for using BLOM daily Technical Analysis Report

<b><u>Close:</u></b>	Is recorded as the last trade in the session.
<b><u>Trend:</u></b>	
<b>Bullish :</b>	The strategy is to buy the dips.
<b>Bearish :</b>	The strategy is to sell the rallies.
<b>Flat :</b>	The strategy is to trade the range between the triggers.
<b>Up-Corr. :</b>	A move against the major trend when it is down.
<b>Dn.-Corr. :</b>	A move against the major trend when it is up.
<b><u>Targets :</u></b>	Take some profit by reducing a portion of the position whenever a price target is been hit.
<b><u>Support :</u></b>	A level below market price (previous lows) where buyers showed strength, in a bull market buy near the support and don't sell on the resistance. A break below the Support is considered to be a bearish sign.
<b><u>Resistance :</u></b>	A level above market price (previous highs) where sellers showed strength, in a bear market sell near the resistance level and don't buy on the support. A break above the resistance is considered to be a bullish sign.
<b><u>Stop Loss :</u></b>	Must exit the current position whenever the closing price is (1% to 2%) below the stop loss and confirmed by volume.
<b><u>Triggers :</u></b>	The range between the lower trigger and the upper is used for trading, break of any of them, the move would continue in the same direction.
<b><u>Yellow rows:</u></b>	indication that the stock closed below/above support, stop-loss, or resistance but the break is not confirmed yet.

#### Disclaimer

- This publication has been prepared by Blom Egypt Securities for information purposes only.
- It is not intended as an offer to buy or sell or a solicitation of an offer to buy or sell the securities mentioned.
- The information & opinions in this publication were prepared by Blom Egypt Securities research department accepts no liability or legal responsibility for losses & damages incurred arising from the use of this publication or its contents.

**Blom Egypt Securities**  
**Samir M. Azmi, CFTe, CETA**  
**Senior Technical Analyst**  
[samir.azmi@blomsecurities.com](mailto:samir.azmi@blomsecurities.com)