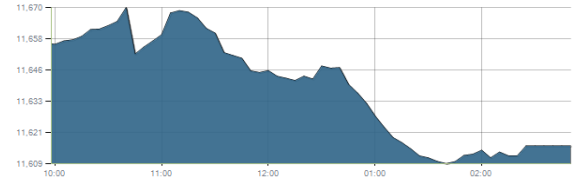




Indices intraday trends

EGX 30

مؤشر EGX 30
اليوم - 24/01/2022

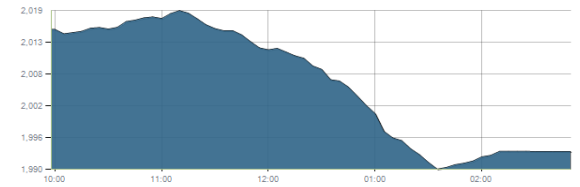


Key Levels

Support 1	11675	Resistance 1	11900
Support 2	11440	Resistance 2	12250

EGX 50 EWI

مؤشر EGX 50 EWI
اليوم - 24/01/2022

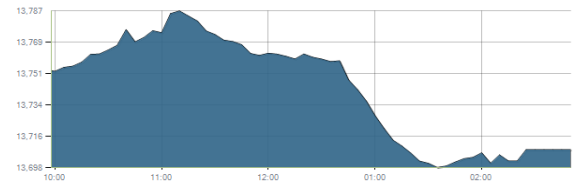


Key Levels

Close		1993.08	
Support 1	1990	Resistance 1	2060
Support 2	1940	Resistance 2	2150

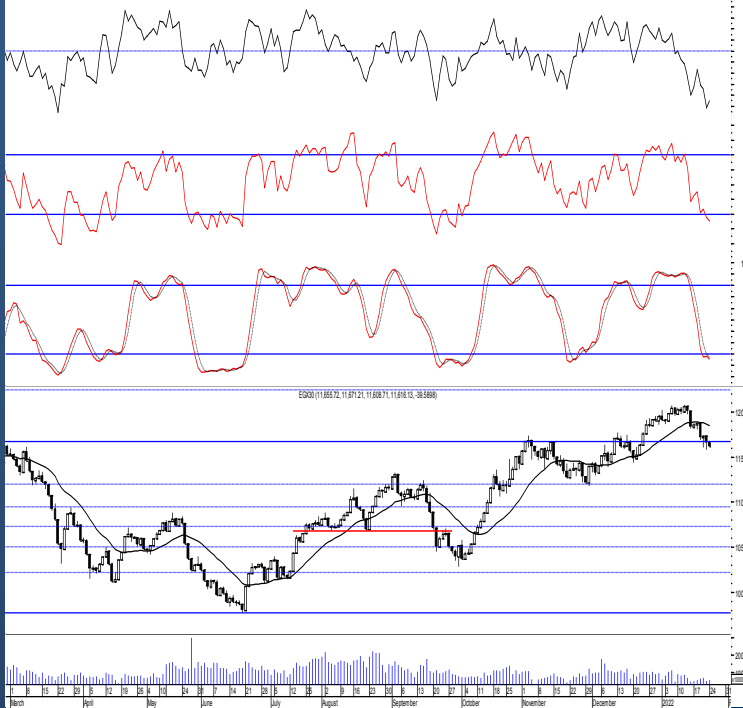
EGX 30 capped

مؤشر EGX 30 Capped
اليوم - 24/01/2022



Key Levels

Close		13708.16	
Support 1	13800	Resistance 1	14150
Support 2	13550	Resistance 2	14325



Market Commentary:

The EGX30 closed again slightly below our important support level 11675 after to continue the early rebounding attempt. Another day close below is needed to confirm the violation so levels are the same and so for our outlook.

As we said, medium term targets now 12250 & 12850, while short term, targets will be 11900 & 12070. We recommend to be conservative and very selective keeping close stops placed and respected to reduce market risk. Notice that any retreating below 11675 will put the market under stress leading to further decline to the next mentioned support level due to lack of confidence so stay alert and disciplined.

Close	11616.13	Trend	Dn.-Corr.
Pre. Close	11655.72	Target 1	---
Change	↓ 39.59 (0.34%)	Target 2	---
Day's range	11671.21 — 11608.71	Stop-loss	11200
52week's high	12069.23	52week's low	9769.18

Disclaimer

- This publication has been prepared by Blom Egypt Securities for information purposes only.
- It is not intended as an offer to buy or sell or a solicitation of an offer to buy or sell the securities mentioned.
- The information & opinions in this publication were prepared by Blom Egypt Securities research department accepts no liability or legal responsibility for losses & damages incurred arising from the use of this publication or its contents.

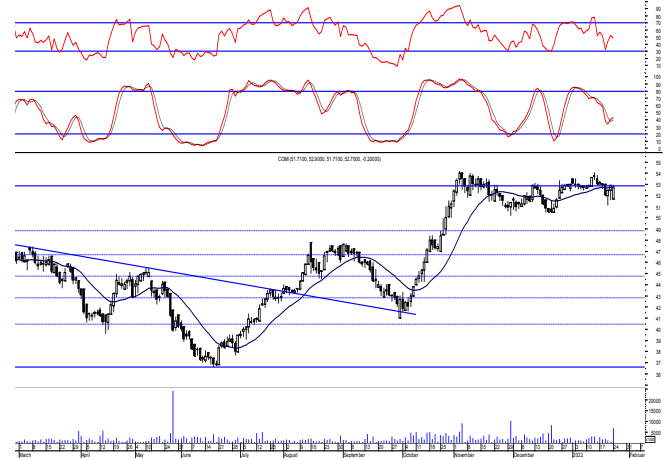
Blom Egypt Securities
Samir M. Azmi, CFTe, CETA
Senior Technical Analyst
samir.azmi@blomsecurities.com



Commercial international bank (COMI.CA):

Prices closed slightly below the resistance level 52.80 after quiet trading performance keeping everything in place. We recommend to wait for a successful breakout to the resistance level 52.80 or on the other hand existing positions to hold watching the mentioned supports very carefully.

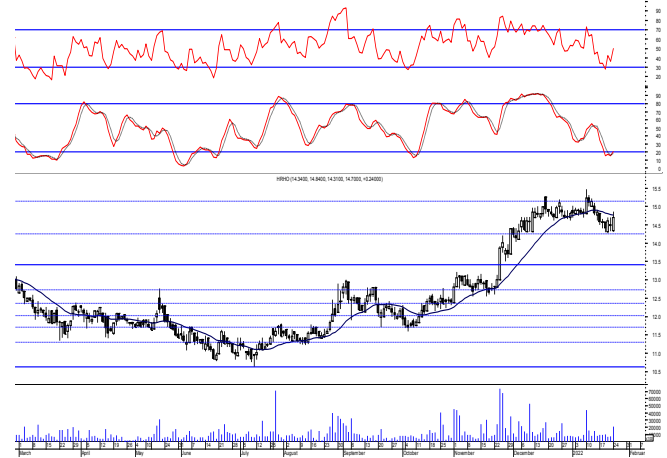
Support levels: 51.60, 50.20
Resistance levels: 52.80, 54.15



Hermes Holding (HRHO.CA):

Prices remained narrowly flat closing slightly positive keeping everything in place. Quick trades could be opened keeping the mentioned support placed and respected as being able to sustain supports the upside potential. We recommend to keep stops placed and respected and wait for new positions till a clear buy signal is clearly given.

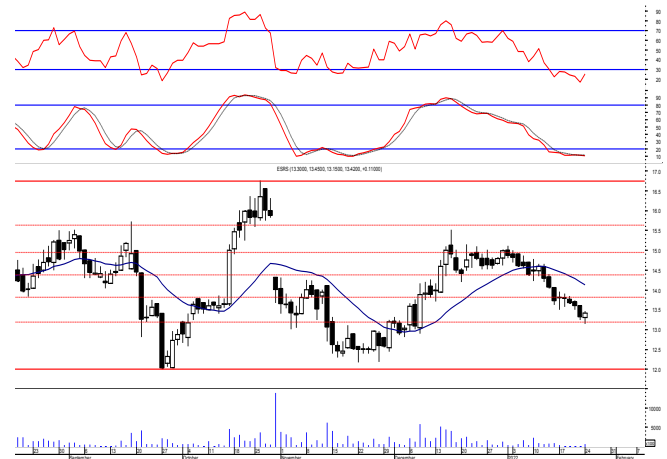
Support levels: 14.45, 14.00
Resistance levels: 15.25, 16.35



El-Ezz steel rebar's' (ESRS.CA):

Prices retested the support level 13.20 managing to rebound from closing in green keeping levels unchanged and so for our outlook. As we said, by failing to defend the mentioned support, further decline is now expected to the prominent support level 13.20. Yet, it's recommended to stay on cash and wait for a confirmed buy signal to react safely on.

Support levels: 13.20, 12.00
Resistance levels: 13.80, 14.50



Disclaimer

- This publication has been prepared by Blom Egypt Securities for information purposes only.
- It is not intended as an offer to buy or sell or a solicitation of an offer to buy or sell the securities mentioned.
- The information & opinions in this publication were prepared by Blom Egypt Securities research department accepts no liability or legal responsibility for losses & damages incurred arising from the use of this publication or its contents.

Blom Egypt Securities
Samir M. Azmi, CFTe, CETA
Senior Technical Analyst
samir.azmi@blomsecurities.com



Most active Stocks

Daily Technical Analysis Report

25 Jan, 2022

Stock Name (Reuters' Code)	Close	Trend	T1	T2	Support	Resistance	SL	Triggers	
								Lower	Upper
Building Materials & Construction									
Arabian Cement (ARCC.CA)	4.11	Dn.-Corr.	—	—	4.10	4.40	3.60	—	—
GB Auto (AUTO.CA)	4.67	Dn.-Corr.	—	—	4.65	5.00	4.35	—	—
El Ezz Steel Rebar's (ESRS.CA)	13.42	Up-Corr.	—	—	13.20	13.80	13.20	—	—
Orascom Construction (ORAS.CA)	72.81	Dn.-Corr.	—	—	70.50	73.30	70.50	—	—
South Valley Cement (SVCE.CA)	1.398	Dn.-Corr.	—	—	1.36	1.48	1.36	—	—
Elswedey Cables (SWDY.CA)	9.10	Dn.-Corr.	—	—	9.00	9.40	8.60	—	—
Upper Egypt General Contracting (UEGC.CA)	0.659	Dn.-Corr.	—	—	0.639	0.69	0.639	—	—
Chemicals									
Abu-Qir Fertilizers (ABUK.CA)	21.49	Dn.-Corr.	—	—	20.90	21.70	17.90	—	—
Egyptian Financial & Indust. (EFIC.CA)	12.81	Up-Corr.	—	—	12.50	13.70	11.40	—	—
Egyptian Chemical Industries-Kima (EGCH.CA)	3.79	Up-Corr.	—	—	3.80	4.10	3.40	—	—
Communications									
Telecom Egypt (ETEL.CA)	16.50	Dn.-Corr.	—	—	16.05	16.80	14.70	—	—
Fawry For Banking Tech. & Electronic Payment (FWRY.CA)	10.86	Bearish	—	—	10.60	10.90	—	—	—
Orascom Investment Holding (OIH.CA)	0.216	Up-Corr.	—	—	0.215	0.235	0.20	—	—
Financial Services									
Abu Dhabi International Bank (ADIB.CA)	14.52	Up-Corr.	—	—	14.00	15.00	12.60	—	—
Arabian For Investments & Development (AIH.CA)	0.358	Dn.-Corr.	—	—	0.35	0.375	0.35	—	—
Amer Holding Group (AMER.CA)	0.93	Up-Corr.	—	—	0.90	0.945	0.85	—	—
Credit Agricole (CIEB.CA)	8.00	Bullish	8.45√	9.15	7.80	8.45	6.80	—	—
Commercial International Bank (COMI.CA)	52.70	Dn.-Corr.	—	—	51.60	52.80	46.60	—	—
Export Development Bank Of Egypt (EXPA.CA)	9.30	Up-Corr.	—	—	9.15	9.70	8.60	—	—
Holding Companies									
B Investments Holdings (BINV.CA)	10.80	Up-Corr.	—	—	10.40	11.00	9.80	—	—
Citadel Capital (CCAP.CA)	1.179	Up-Corr.	—	—	1.17	1.24	1.09	—	—
Kuwaiti Holding (EKHO.CA)	1.38	Dn.-Corr.	—	—	1.342	1.405	1.22	—	—
Hermes Holding (HRHO.CA)	14.70	Dn.-Corr.	—	—	14.45	15.25	11.25	—	—
MM Group For Industry & International Trade (MTIE.CA)	7.37	Dn.-Corr.	—	—	7.15	7.60	6.60	—	—
Orascom Financial Holding (OFH.CA)	0.218	Up-Corr.	—	—	0.208	0.23	0.208	—	—
Housing & Real Estate									
Egyptian For Tourism Resorts (EGTS.CA)	1.367	Up-Corr.	—	—	1.354	1.44	1.23	—	—
El-shams Housing (ELSH.CA)	7.94	Up-Corr.	—	—	7.80	8.40	7.40	—	—
Emaar Holding (EMFD.CA)	2.86	Bullish	3.00√	3.20	2.80	3.10	2.70	—	—
Heliopolis Housing & Development (HELI.CA)	6.15	Dn.-Corr.	—	—	5.75	6.50	—	—	—
Medinet Nasr For Housing & Deve. (MNHD.CA)	2.64	Up-Corr.	—	—	2.52	2.72	2.52	—	—
Palm Hills Development Co. (PHDC.CA)	1.734	Up-Corr.	—	—	1.72	1.84	1.72	—	—
Talaat Mustafa Group Holding (TMGH.CA)	8.85	Dn.-Corr.	—	—	8.90	9.50	7.60	—	—
Mining & Gas									
Alexandria Mineral Oils Co. (AMOC.CA)	3.73	Dn.-Corr.	—	—	3.60	3.77	3.33	—	—
Sidi Kerir Petrochemicals (SKPC.CA)	7.25	Up-Corr.	—	—	7.20	7.75	6.30	—	—
Textiles & Clothes									
Arab Co. For Asset Management & Deve. (ACAMD.CA)	0.45	Up-Corr.	—	—	0.42	0.48	0.42	—	—
Arab Cotton Ginning (ACGC.CA)	1.589	Up-Corr.	—	—	1.585	1.67	1.455	—	—
Oriental Weavers (ORWE.CA)	8.50	Dn.-Corr.	—	—	8.40	8.75	7.50	—	—
Other Sectors									
Egyptian Media Production City (MPRC.CA)	5.66	Up-Corr.	—	—	5.55	6.00	4.80	—	—
Orascom Holding Development (ORHD.CA)	5.45	Up-Corr.	—	—	5.35	5.60	5.15	—	—
Delta Sugar (SUGR.CA)	14.66	Up-Corr.	—	—	14.55	15.35	13.30	—	—
United Arab Shipping (UASG.CA)	0.893	Up-Corr.	—	—	0.86	0.92	0.80	—	—

Disclaimer

- This publication has been prepared by Blom Egypt Securities for information purposes only.
- It is not intended as an offer to buy or sell or a solicitation of an offer to buy or sell the securities mentioned.
- The information & opinions in this publication were prepared by Blom Egypt Securities research department accepts no liability or legal responsibility for losses & damages incurred arising from the use of this publication or its contents.

Blom Egypt Securities
Samir M. Azmi, CFTe, CETA
Senior Technical Analyst
samir.azmi@blomsecurities.com



Guidelines for using BLOM daily Technical Analysis Report

<u>Close:</u>	Is recorded as the last trade in the session.
<u>Trend:</u>	
Bullish :	The strategy is to buy the dips.
Bearish :	The strategy is to sell the rallies.
Flat :	The strategy is to trade the range between the triggers.
Up-Corr. :	A move against the major trend when it is down.
Dn.-Corr. :	A move against the major trend when it is up.
<u>Targets :</u>	Take some profit by reducing a portion of the position whenever a price target is been hit.
<u>Support :</u>	A level below market price (previous lows) where buyers showed strength, in a bull market buy near the support and don't sell on the resistance. A break below the Support is considered to be a bearish sign.
<u>Resistance :</u>	A level above market price (previous highs) where sellers showed strength, in a bear market sell near the resistance level and don't buy on the support. A break above the resistance is considered to be a bullish sign.
<u>Stop Loss :</u>	Must exit the current position whenever the closing price is (1% to 2%) below the stop loss and confirmed by volume.
<u>Triggers :</u>	The range between the lower trigger and the upper is used for trading, break of any of them, the move would continue in the same direction.
<u>Yellow rows:</u>	indication that the stock closed below/above support, stop-loss, or resistance but the break is not confirmed yet.

Disclaimer

- This publication has been prepared by Blom Egypt Securities for information purposes only.
- It is not intended as an offer to buy or sell or a solicitation of an offer to buy or sell the securities mentioned.
- The information & opinions in this publication were prepared by Blom Egypt Securities research department accepts no liability or legal responsibility for losses & damages incurred arising from the use of this publication or its contents.

Blom Egypt Securities
Samir M. Azmi, CFTe, CETA
Senior Technical Analyst
samir.azmi@blomsecurities.com