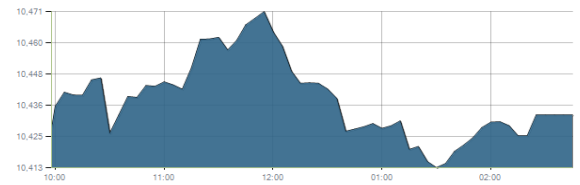


Indices intraday trends

EGX 30

مؤشر EGX 30  
اليوم - 05/10/2021

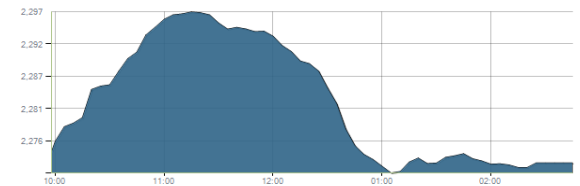


Key Levels

Support 1	10350	Resistance 1	10680
Support 2	10150	Resistance 2	10850-10950

EGX 50 EWI

مؤشر EGX 50 EWI  
اليوم - 05/10/2021

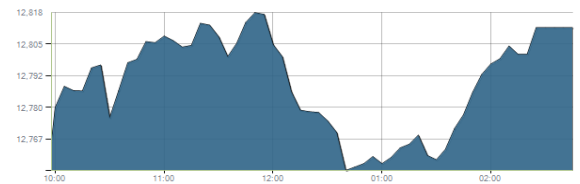


Key Levels

Close		2272.10	
Support 1	2240	Resistance 1	2310
Support 2	2200	Resistance 2	2355

EGX 30 capped

مؤشر EGX 30 Capped  
اليوم - 05/10/2021



Key Levels

Close		12811.68	
Support 1	12630	Resistance 1	12800
Support 2	12500	Resistance 2	12940

Market Commentary:

The EGX30 closed slightly positive after as quiet trading performance overwhelmed in most of the stocks keeping levels unchanged and so for our outlook. Weak trading volumes still keeps the market risk elevated keeping our outlook unchanged. We still recommend staying on cash till a clear reentry signal is clearly given. Increasing trading volumes is always an important factor to prove real buying strength otherwise any upward move will only be an up correction within the short term down trend.

Close	10432.63	Trend	Bearish
Pre. Close	10427.44	Target 1	---
Change	↑ 5.19 ( 0.05% )	Target 2	---
Day's range	10412.07 — 10472.95	Stop-loss	---
52week's high	11675.69	52week's low	9769.18.18

Disclaimer

- This publication has been prepared by Blom Egypt Securities for information purposes only.
- It is not intended as an offer to buy or sell or a solicitation of an offer to buy or sell the securities mentioned.
- The information & opinions in this publication were prepared by Blom Egypt Securities research department accepts no liability or legal responsibility for losses & damages incurred arising from the use of this publication or its contents.

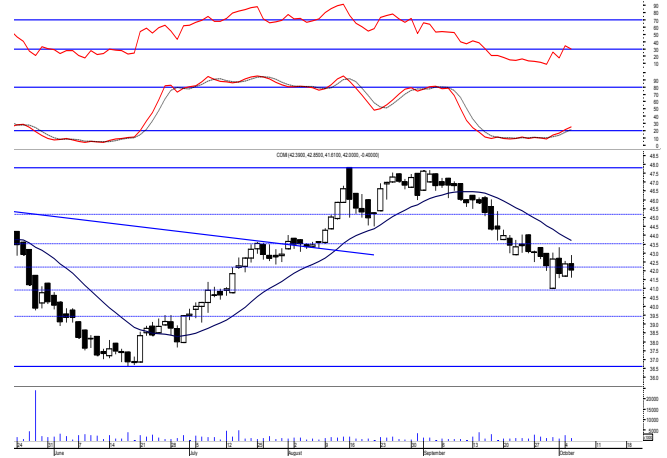
**Blom Egypt Securities**  
Samir M. Azmi, CFTe, CETA  
Senior Technical Analyst  
samir.azmi@blomsecurities.com



**Commercial international bank (COMI.CA):**

Prices witnessed a failure rally attempt ahead of trading before balanced performance dominates closing below our resistance level 42.30 keeping everything in place. Yet, we recommend staying on cash & wait for confirmed buy signal so that we can react safely on. Any existing positions should always keep stops placed and respected

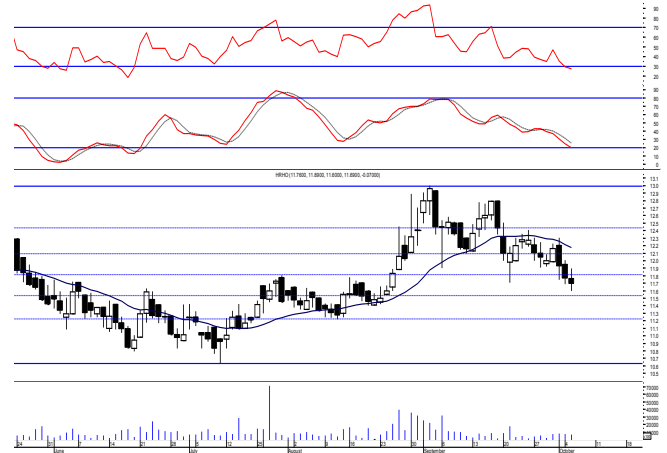
Support levels: 40.90, 39.40  
Resistance levels: 42.30, 43.50



**Hermes Holding (HRHO.CA):**

Prices witnessed another decline closing slightly below our mentioned support levels but still needs confirmation so levels are considered the same and so for outlook. Existing positions are advised to hold keeping stops placed and respected below 11.25 as any decline below will give back the hand to selling party.

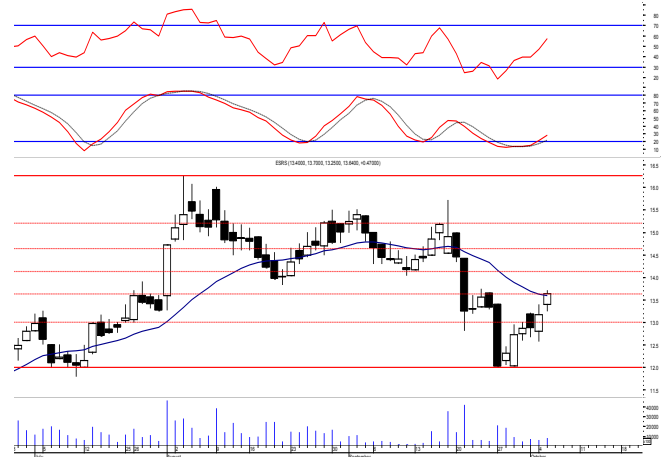
Support levels: 11.70, 11.25  
Resistance levels: 12.10, (12.60-12.75)



**El-Ezz steel rebar's' (ESRS.CA):**

Prices witnessed another upward move as we expected trading mostly above our resistance level 13.40 reaching near the intraday resistance 13.75 where we recommended to use for same day trade. Short term traders may use the new range for short term trades keeping stop placed below the mentioned support while conservatives to wait for all key elements to be clear to react safely on.

Support levels: 13.40, 12.30  
Resistance levels: 14.50, 15.20



**Disclaimer**

- This publication has been prepared by Blom Egypt Securities for information purposes only.
- It is not intended as an offer to buy or sell or a solicitation of an offer to buy or sell the securities mentioned.
- The information & opinions in this publication were prepared by Blom Egypt Securities research department accepts no liability or legal responsibility for losses & damages incurred arising from the use of this publication or its contents.

**Blom Egypt Securities**  
**Samir M. Azmi, CFTe, CETA**  
**Senior Technical Analyst**  
[samir.azmi@blomsecurities.com](mailto:samir.azmi@blomsecurities.com)



Most active Stocks

Daily Technical Analysis Report

6 Oct, 2021

Stock Name (Reuters' Code)	Close	Trend	T1	T2	Support	Resistance	SL	Triggers	
								Lower	Upper
<b>Building Materials &amp; Construction</b>									
Arabian cement (ARCC.CA)	3.94	Bearish	—	—	3.45	4.10	—	—	—
El Ezz Steel Rebar's (ESRS.CA)	13.64	Dn.-Corr.	—	—	13.40	14.50	11.40	—	—
GB auto (AUTO.CA)	4.03	Dn.-Corr.	—	—	3.95	4.20	3.75	—	—
Orascom construction (ORAS.CA)	73.50	Dn.-Corr.	—	—	71.00	75.20	68.50	—	—
South Valley Cement (SVCE.CA)	1.817	Bearish	—	—	1.70	1.95	—	—	—
Elsweddy Cables (SWDY.CA)	8.06	UP-Corr.	—	—	7.90	8.35	7.90	—	—
Upper Egypt general contracting (UEGC.CA)	0.713	Up-Corr.	—	—	0.685	0.725	0.672	—	—
<b>Chemicals</b>									
Abu-Qir fertilizers (ABUK.CA)	20.00	Up-Corr.	—	—	19.70	21.00	18.30	—	—
Egyptian Financial & Indust. (EFIC.CA)	12.80	Up-Corr.	—	—	12.60	13.40	12.10	—	—
Egyptian chemical industries-Kima (EGCH.CA)	3.80	Bearish	—	—	3.50	3.77	—	—	—
<b>Communications</b>									
Fawry for banking tech. & electronic payment (FWRY.CA)	14.80	Bearish	—	—	13.60	14.90	—	—	—
Orascom investment holding (OIH.CA)	0.246	Dn.-Corr.	—	—	0.235	0.25	0.215	—	—
Telecom Egypt (ETEL.CA)	13.70	Dn.-Corr.	—	—	13.65	14.30	12.90	—	—
<b>Financial Services</b>									
Abu Dhabi International Bank (ADIB.CA)	14.62	Up-Corr.	—	—	14.50	14.80	12.60	—	—
Arabian for investments & development (AIH.CA)	0.44	Up-Corr.	—	—	0.445	0.477	0.403	—	—
Amer holding group (AMER.CA)	0.782	Up-Corr.	—	—	0.78	0.83	0.78	—	—
Commercial International Bank (COMI.CA)	42.00	Bearish	—	—	40.90	42.30	—	—	—
Export development bank of Egypt (EXPA.CA)	9.60	Up-Corr.	—	—	9.15	10.00	9.15	—	—
<b>Holding Companies</b>									
Citadel capital (CCAP.CA)	1.132	Up-Corr.	—	—	1.09	1.16	1.09	—	—
Hermes Holding (HRHO.CA)	11.69	Dn.-Corr.	—	—	11.70	12.10	11.25	—	—
Kuwaiti Holding (EKHO.CA)	1.171	Flat	—	—	—	—	1.11	1.11	1.174
MM group for industry & international trade (MTIE.CA)	6.53	Bearish	—	—	6.20	6.70	—	—	—
Orascom financial holding (OFH.CA)	0.241	Bearish	—	—	0.23	0.26	—	—	—
Pioneers holding (PIOH.CA)	N/A	Up-Corr.	—	—	5.75	6.10	5.05	—	—
<b>Housing &amp; Real Estate</b>									
Egyptian For Tourism Resorts (EGTS.CA)	1.713	Bearish	—	—	1.625	1.77	—	—	—
Elshams housing (ELSH.CA)	12.09	Up-Corr.	—	—	12.10	13.00	10.00	—	—
Emaar holding (EMFD.CA)	2.40	Dn.-Corr.	—	—	2.37	2.48	2.28	—	—
Heliopolis housing & development (HELI.CA)	4.90	Dn.-Corr.	—	—	4.85	5.05	4.85	—	—
Medinet Nasr for housing & Deve. (MNHD.CA)	2.63	Bearish	—	—	2.53	2.73	—	—	—
6th. October Deve. Inv. (OCDI.CA)	18.10	Dn.-Corr.	—	—	17.90	18.60	16.90	—	—
Palm hills development Co. (PHDC.CA)	1.93	Dn.-Corr.	—	—	1.90	1.96	1.73	—	—
Talaat Mustafa group holding (TMGH.CA)	7.30	Dn.-Corr.	—	—	6.90	7.50	6.90	—	—
<b>Mining &amp; Gas</b>									
Alexandria Mineral Oils Co. (AMOC.CA)	3.89	Dn.-Corr.	—	—	3.75	3.96	3.20	—	—
Sidi Kerir Petrochemicals (SKPC.CA)	8.80	Bearish	—	—	8.65	9.30	—	—	—
<b>Textiles &amp; Clothes</b>									
Arab Co. for asset management & Deve. (ACAMD.CA)	0.552	Up-Corr.	—	—	0.54	0.575	0.54	—	—
Arab cotton ginning (ACGC.CA)	1.655	Bearish	—	—	1.615	1.70	—	—	—
Oriental Weavers (ORWE.CA)	8.60	Dn.-Corr.	—	—	8.55	8.90	7.50	—	—
<b>Other Sectors</b>									
Egyptian Media Production City (MPC.CA)	5.45	Bearish	—	—	5.04	5.60	—	—	—
Egyptian Transport - Egytrans (ETRS.CA)	13.70	Bearish	—	—	12.45	13.60	—	—	—
Orascom holding development (ORHD.CA)	4.74	Up-Corr.	—	—	4.64	4.85	4.64	—	—
United Arab Shipping (UASG.CA)	1.248	Up-Corr.	—	—	1.215	1.34	1.05	—	—

Disclaimer

- This publication has been prepared by Blom Egypt Securities for information purposes only.
- It is not intended as an offer to buy or sell or a solicitation of an offer to buy or sell the securities mentioned.
- The information & opinions in this publication were prepared by Blom Egypt Securities research department accepts no liability or legal responsibility for losses & damages incurred arising from the use of this publication or its contents.

**Blom Egypt Securities**  
Samir M. Azmi, CFTe, CETA  
Senior Technical Analyst  
samir.azmi@blomsecurities.com



**Guidelines for using BLOM daily Technical Analysis Report**

<b><u>Close:</u></b>	Is recorded as the last trade in the session.
<b><u>Trend:</u></b>	
<b>Bullish :</b>	The strategy is to buy the dips.
<b>Bearish :</b>	The strategy is to sell the rallies.
<b>Flat :</b>	The strategy is to trade the range between the triggers.
<b>Up-Corr. :</b>	A move against the major trend when it is down.
<b>Dn.-Corr. :</b>	A move against the major trend when it is up.
<b><u>Targets :</u></b>	Take some profit by reducing a portion of the position whenever a price target is been hit.
<b><u>Support :</u></b>	A level below market price (previous lows) where buyers showed strength, in a bull market buy near the support and don't sell on the resistance. A break below the Support is considered to be a bearish sign.
<b><u>Resistance :</u></b>	A level above market price (previous highs) where sellers showed strength, in a bear market sell near the resistance level and don't buy on the support. A break above the resistance is considered to be a bullish sign.
<b><u>Stop Loss :</u></b>	Must exit the current position whenever the closing price is (1% to 2%) below the stop loss and confirmed by volume.
<b><u>Triggers :</u></b>	The range between the lower trigger and the upper is used for trading, break of any of them, the move would continue in the same direction.
<b><u>Yellow rows:</u></b>	indication that the stock closed below/above support, stop-loss, or resistance but the break is not confirmed yet.

**Disclaimer**

- This publication has been prepared by Blom Egypt Securities for information purposes only.
- It is not intended as an offer to buy or sell or a solicitation of an offer to buy or sell the securities mentioned.
- The information & opinions in this publication were prepared by Blom Egypt Securities research department accepts no liability or legal responsibility for losses & damages incurred arising from the use of this publication or its contents.

**Blom Egypt Securities**  
**Samir M. Azmi, CFTe, CETA**  
**Senior Technical Analyst**  
**samir.azmi@blomsecurities.com**